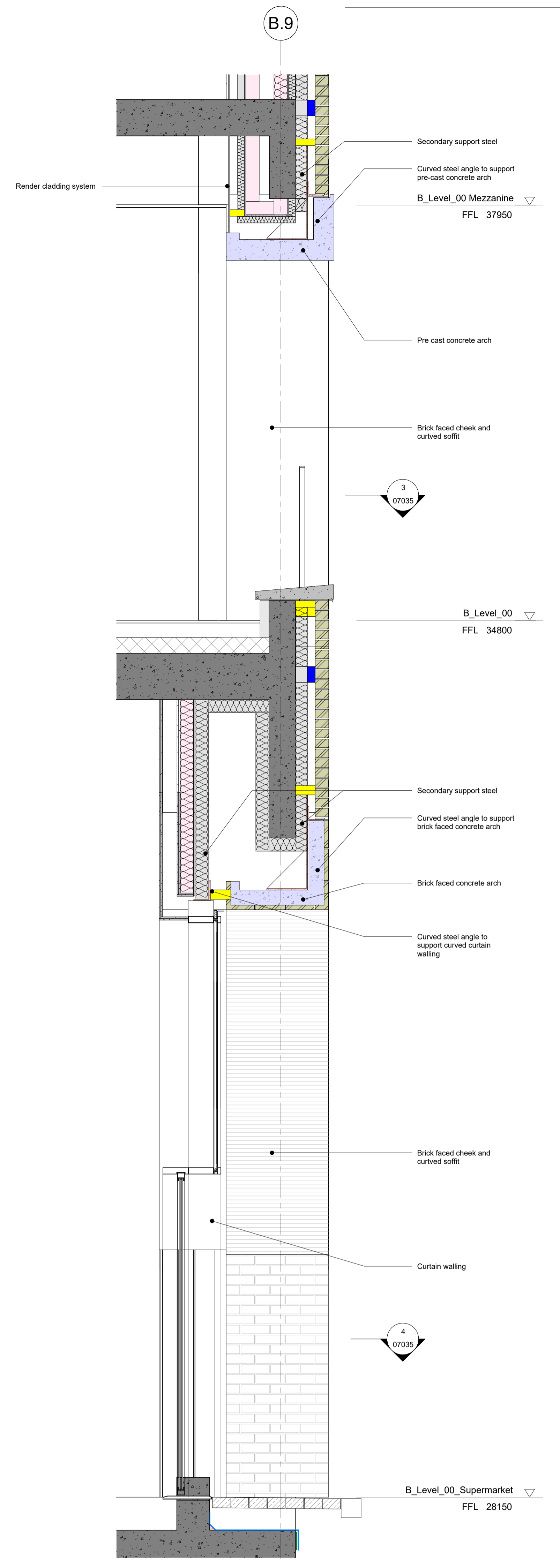
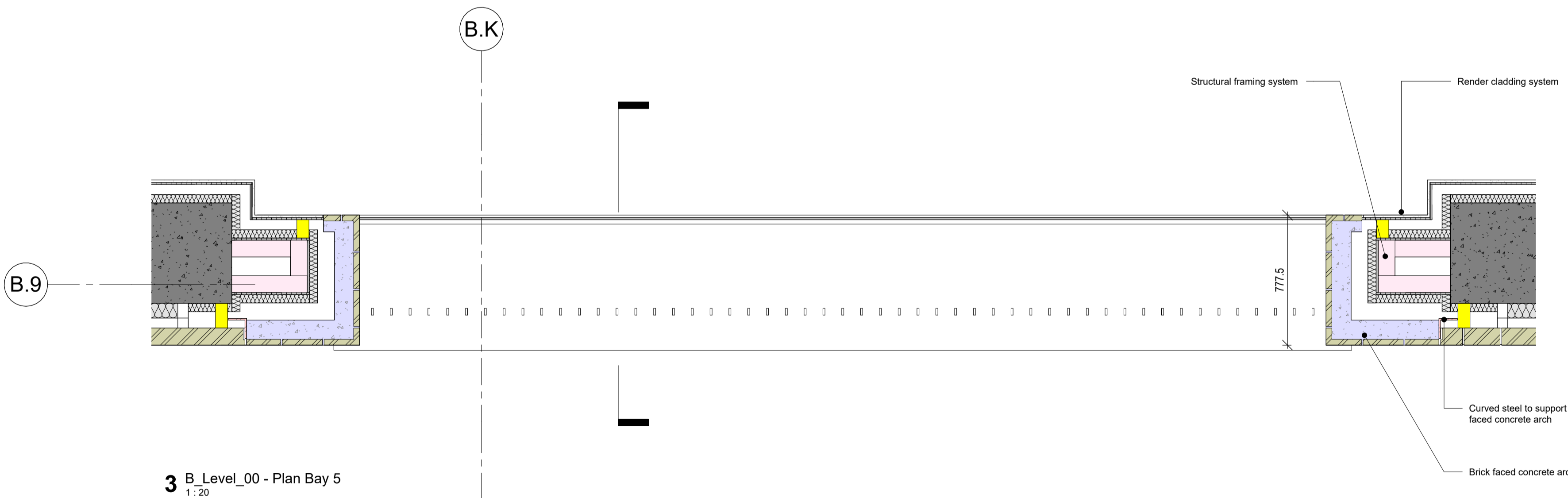


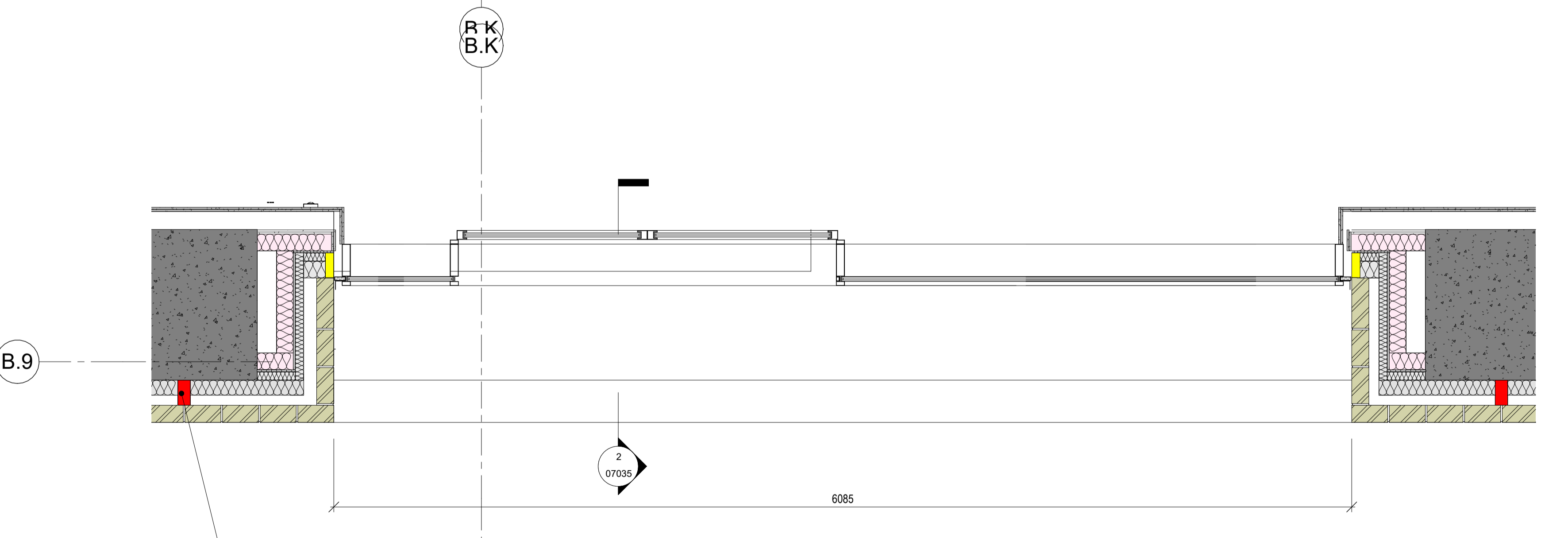
1 East Elevation - Bay 5
1:20
Ref: 02/04



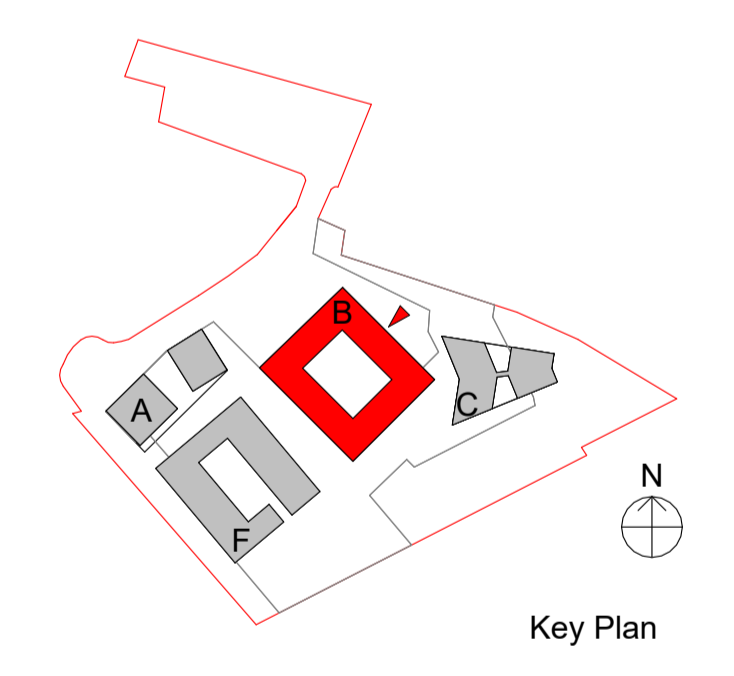
2 Bay 5 - Section
1:20



3 B_Level_00 - Plan Bay 5
1:20



4 B_Level_00 Supermarket - Plan Bay 5
1:20



Key Plan



Bay location - East Elevation

LEGEND

- Movement joints
- Horizontal movement joints to be co-ordinated with masonry support. To be reviewed to conform with NHBC requirements
- DPC
- DRI
- Dry Riser Inlet
- Cavity barriers shown on 67 Series drawings

GENERAL NOTES

SETTING OUT - DO NOT SCALE from this drawing, use figured dimensions ONLY. If in doubt, ASKI Dimensions are shown to structural face generally, or to finished face of ducts and lining. All dimensions are shown in millimeters unless otherwise indicated. Angular dimensions are shown in decimal degrees to the nearest whole degree. Where items are to be fabricated off-site, site dimensions are to be used and confirmed prior to ordering or manufacturing.

STRUCTURAL - For design, detailing and setting out of structural elements refer to Structural Engineers drawings.

SERVICES - For design, detailing and setting out of services, including SVP's, Gas, Water, Electrics & Telecoms etc refer to M&E Engineers and Structural Engineers drawings.

FINISHES - For external wall finishes & wall types refer to Series 21 External Wall Types & Detail drawings

All information on this drawing must be read in conjunction with relevant series and specifications.

001	CONSTRUCTION ISSUE	24.02.23	CS	ACS
Revision	Description	Date	Drawn	Checked

design delivery unit

77 Endell Street
London WC2H 9DZ
T +44 (0)20 7240 7766
W designdeliveryunit.com

Client's Name
St George North London Limited



Job Title
Camden Goods Yard

Drawing Title
Building B Bay Details Sheet5

Scale
As indicated @A0

Revision
20226

Previous Drawing Number
CGYB0 - PTA - XXX - XX - DR - AR - 07035

Previous Revision
P1, Work in progress issue, 04.03.22

Client Project No.	Original	Value	Level	Type	File	Number
CGYB0-DDU-B0-ZZ-DR-A-07035						

CONSTRUCTION **001**