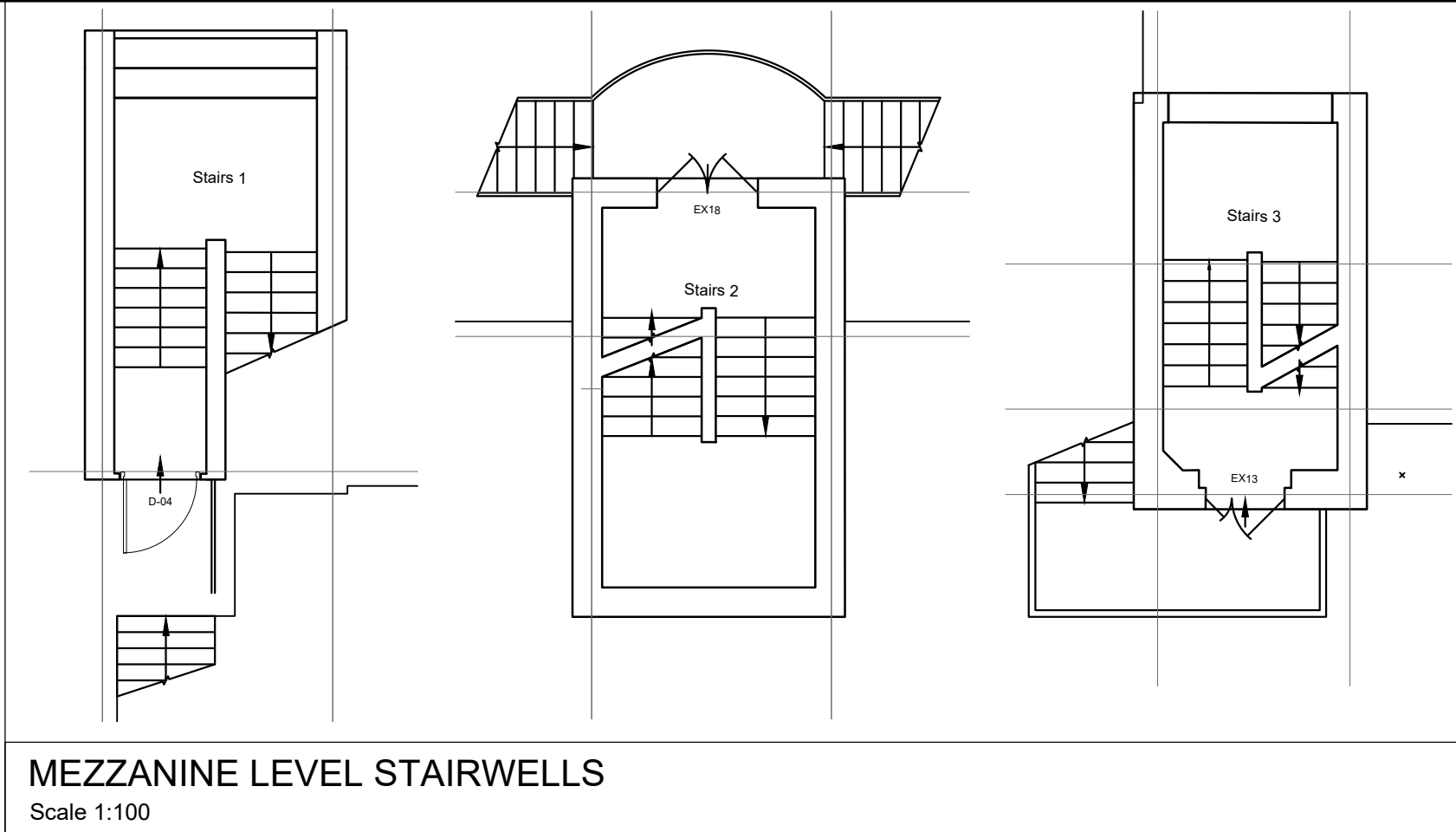
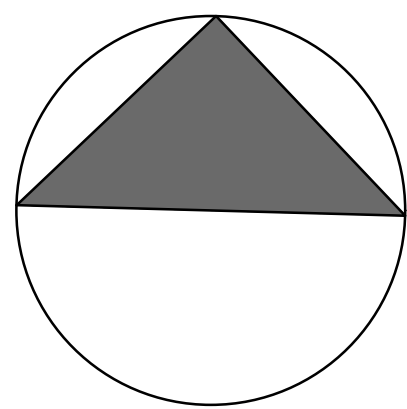


**COMMUNITY BLOCK:**  
Blank canvases requested. All existing walls to be made good and painted off white ref. DULUX 711Y 90/027. All wood work, architraves, frames, windows and existing doors to be made good and painted RAL 7016


**ACCESSIBLE LIFT NOTE:**  
Ascendor PLG7v 2 by Level Lifts as per quote LAL.12947.11.21 received quote 01.12.21. Issued in scheme design document revision A ref 815-D0C-PR-503 subject to M&E and wall survey review. Construction of new staircase to be determined on site due to limited access. 18mm thick stainless steel handrail with toughened safety glass balustrades to comply with building regs Part M. Also for review with Fire Officer



SAFETY, HEALTH AND ENVIRONMENT INFORMATION			
THE RISKS NOTED BELOW ARE IN ADDITION TO THE RISKS NORMALLY ASSOCIATED WITH THE TYPE OF WORK DETAILED ON THIS DRAWING.			
<b>CONSTRUCTION</b> REFER TO ALL SITE HEALTH & SAFETY GUIDANCE. REFER TO ASBESTOS REPORT, AND RISK REGISTER. BE AWARE OF SITE DELIVERIES AND MOVEMENT OF MATERIALS ON SITE. BEWARE OF WORK OPERATIONS OVERHEAD.			
<b>OPERATIONS</b> PPE TO BE WORN ON SITE RISK OF INFECTION - COVID 19 WORKING AT HEIGHT - FALLS FROM HEIGHT & INJURIES ACCESS FOR SITE DELIVERIES MAINTENANCE OF MATERIALS PAINTS & SOLVENTS (INHALATION, FUMES)			
<b>MAINTENANCE</b> CLEANING & MAINTENANCE PLAN TO BE REVIEWED. RISK OF LEGIONELLA'S DISEASE TO BE ASSESSED HIGH LEVEL WINDOW CLEANING - WASH & REACH TO BE CONSIDERED			
<b>DISMANTLING / DEMOLITION (FUTURE)</b> REFER TO ASBESTOS REPORT, DEMOLITION DRAWINGS AND TO STRUCTURAL ENGINEERS DETAILS AND GUIDANCE. WEAR APPROPRIATE PPE. MAKE SAFE ALL SERVICES. DISPLAY WARNING SIGNAGE. NOISE & DUST DURING OPERATING HOURS			
THE ABOVE RISKS ARE LISTED IN THE DESIGN RISK REGISTER REFERENCE: 1CP01-MDS_SQD-DS-RMA-SS08_SL23-000001			
<b>DESIGN STATEMENT</b> THE DESIGN INTENT OF THIS DRAWING COMPLIES WITH D.E.I (DIVERSITY, EQUITY & INCLUSION) GUIDELINES.			

ISSUED FOR PLANNING

					HS2 accepts no responsibility for any circumstances which arise from the reproduction of this document after alteration, amendment or abbreviation or if it is issued in part or issued incompletely in any way.	Legends/Notes:
					© Crown Copyright and database right 2020. All rights reserved. Ordnance Survey Licence number 100049190	
					© Crown Copyright material is reproduced with the permission of Land Registry under delegated authority from the Controller of HMSO.	
P01	Internal layout scheme updated. Wall removed from Induction Room 2. New fitting-out partition changes to changing rooms, toilets, showers, offices and fire doors added. Accessible stair & platform lift to Breakfast Seminar room. Accessible stair platform lift added to Hall corridor 1A.	MP	MA	KK	This material was last updated on 2020 and may not be copied, distributed, sold or published without the formal permission of Land Registry. Only an official copy of a title plan or register obtained from the Land Registry may be used for legal or other official purposes.	
	Multi use hall. New fitting-out partition changes to changing rooms, toilets, and layout updated. Fire doors added. Entrance doors changed to sliding doors.					
Rev	Description	Drawn	Checked	Approved	Con Acc	Scale with caution as distortion can occur.

 Registered in England Registration No. 06791686 Registered office: 2 Snow Hill, Queensway, Birmingham, B4 6GA	Official	Stage 4	Project/Contract Maria Fidelis School Building	Creator/Originator Mace Dragados	Sub Originator Square Dot
		Drawing Title	Work Package Description	Discipline/Function DS	System description
		Drawing Title	Square Dot Maria Fidelis School 815-GA-00-100 Ground Floor General Arrangement Plan	Drawn by MA	Checked by MA
				Approved by MP	Date 26.10.2023
				Scale 1:100mm	Size A0
				Suitability P01	Rev. P01
				Drawing No. 1CP01-MDS_SQD-DS-DPL-SS08_SL23_GF-000001	