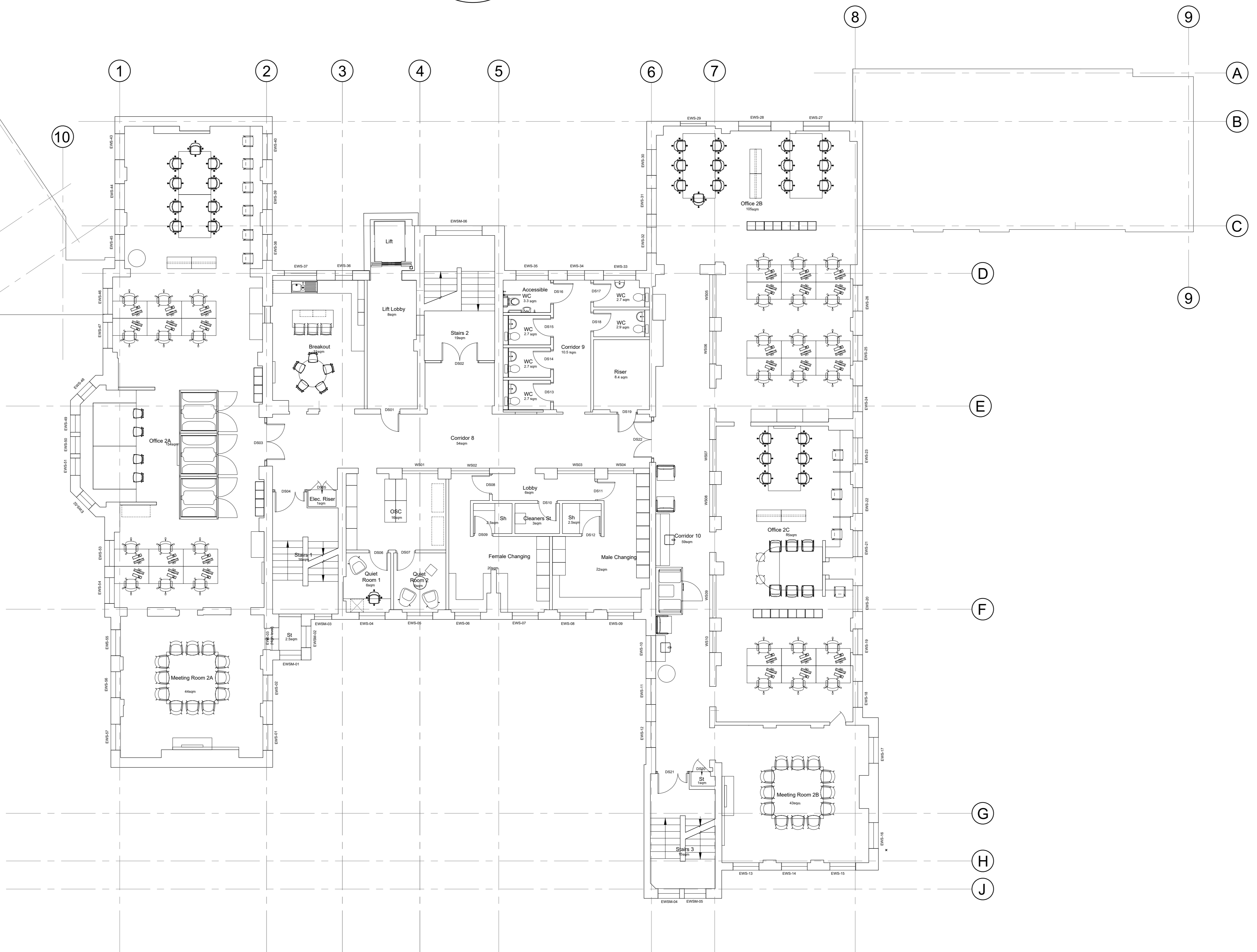



SAFETY, HEALTH AND ENVIRONMENT INFORMATION			
THE RISKS NOTED BELOW ARE IN ADDITION TO THE RISKS NORMALLY ASSOCIATED WITH THE TYPE OF WORK DETAILED ON THIS DRAWING.			
CONSTRUCTION REFER TO ALL SITE HEALTH & SAFETY GUIDANCE. REFER TO ASBESTOS REPORT, AND RISK REGISTER. BE AWARE OF SITE DELIVERIES AND MOVEMENT OF MATERIALS ON SITE. BE AWARE OF WORK OPERATIONS OVERHEAD.			
OPERATIONS PPE TO BE WORN ON SITE RISK OF INFECTION - COVID 19 WORKING AT HEIGHT - FALLS FROM HEIGHT & INJURIES ACCESS FOR SITE DELIVERIES MAINTENANCE OF MATERIALS PAINTS & SOLVENTS (INHALATION, FUMES)			
MAINTENANCE CLEANING & MAINTENANCE PLAN TO BE REVIEWED. RISK OF LEGIONELLA'S DISEASE TO BE ASSESSED. HIGH LEVEL WINDOW CLEANING - WASH & REACH TO BE CONSIDERED			
DISMANTLING / DEMOLITION (FUTURE) REFER TO ASBESTOS REPORT, DEMOLITION DRAWINGS AND TO STRUCTURAL ENGINEER'S DETAILS AND GUIDANCE. WEAR APPROPRIATE PPE. MAKE SAFE ALL SERVICES. DISPLAY WARNING SIGNAGE. NOISE & DUST DURING OPERATING HOURS			
THE ABOVE RISKS ARE LISTED IN THE DESIGN RISK REGISTER REFERENCE: 1CP01-MDS_SQD-DS-RIA-SS08_SL23-000001			
DESIGN STATEMENT THE DESIGN INTENT OF THIS DRAWING COMPLIES WITH D.E.I (DIVERSITY, EQUITY & INCLUSION) GUIDELINES.			



ISSUED FOR PLANNING

						HS2 accepts no responsibility for any circumstances which arise from the reproduction of this document after alteration, amendment or abbreviation or if it is issued in part or issued incompletely in any way.	Legends/Notes:	<div><p>Registered in England Registration No. 06791686 Registered office: 2 Snow Hill, Queensway, Birmingham, B4 6GA</p></div>	<div>Official</div>	<div>Stage 4</div>	<div>Project/Contract Maria Fidelis School Building</div>	<div>Creator/Originator Mace Dragados</div>		<div>Sub Originator Square Dot</div>			
					© Crown Copyright and database right 2020. All rights reserved. Ordnance Survey Licence number 100049190	<div>Drawing Title</div>				<div>Work Package Description</div>	<div>Discipline/Function DS</div>		<div>System description</div>				
					© Crown Copyright material is reproduced with the permission of Land Registry under delegated authority from the Controller of HMSO.	<div>Drawing Title</div>				<div>Square Dot Maria Fidelis School 815-GA-02-100 Second Floor General Arrangement</div>				<div>Drawn by MA</div>	<div>Checked by MA</div>	<div>Approved by MP</div>	<div>Date 13.10.2023</div>
					This material was last updated on 2020 and may not be copied, distributed, sold or published without the formal permission of Land Registry. Only an official copy of a title plan or register obtained from the Land Registry may be used for legal or other official purposes.	<div>Scale 1:100mm</div>				<div>Size A0</div>	<div>Suitability</div>	<div>Rev. P01</div>					
P01	Internal layout scheme updated. New fitting-out partition changes to office, showers and changing rooms. Fire doors added.	MP	MA	KK													
Rev	Description	Drawn	Checked	Approved	Con Acc	Scale with caution as distortion can occur.				<div>Drawing No. 1CP01-MDS_SQD-DS-DPL-SS08_SL23_F2-000001</div>							