

Block B



- Block B - seeded area - 140m2**
Biodiverse Brown roof - Seeded with Bauder Urban Flora 5 seed mix osap (35g/m2)
Seeded on Bauder substrate system for biodiverse /brown roofs osap - lightweight substrate to BS8616. 75mm- 125mm undulating thickness to give varying habitats. average 100mm depth.
<https://www.bauder.co.uk> - OSAP system
- Block B - unseeded areas - 50m2**
Biodiverse brown roof - bare soil to naturally colonize - extensive roof system
Bauder substrate system for biodiverse /brown roofs osap - lightweight substrate to BS8616. 75mm- 125mm undulating thickness to give varying habitats. average 100mm depth.
<https://www.bauder.co.uk> - OSAP system

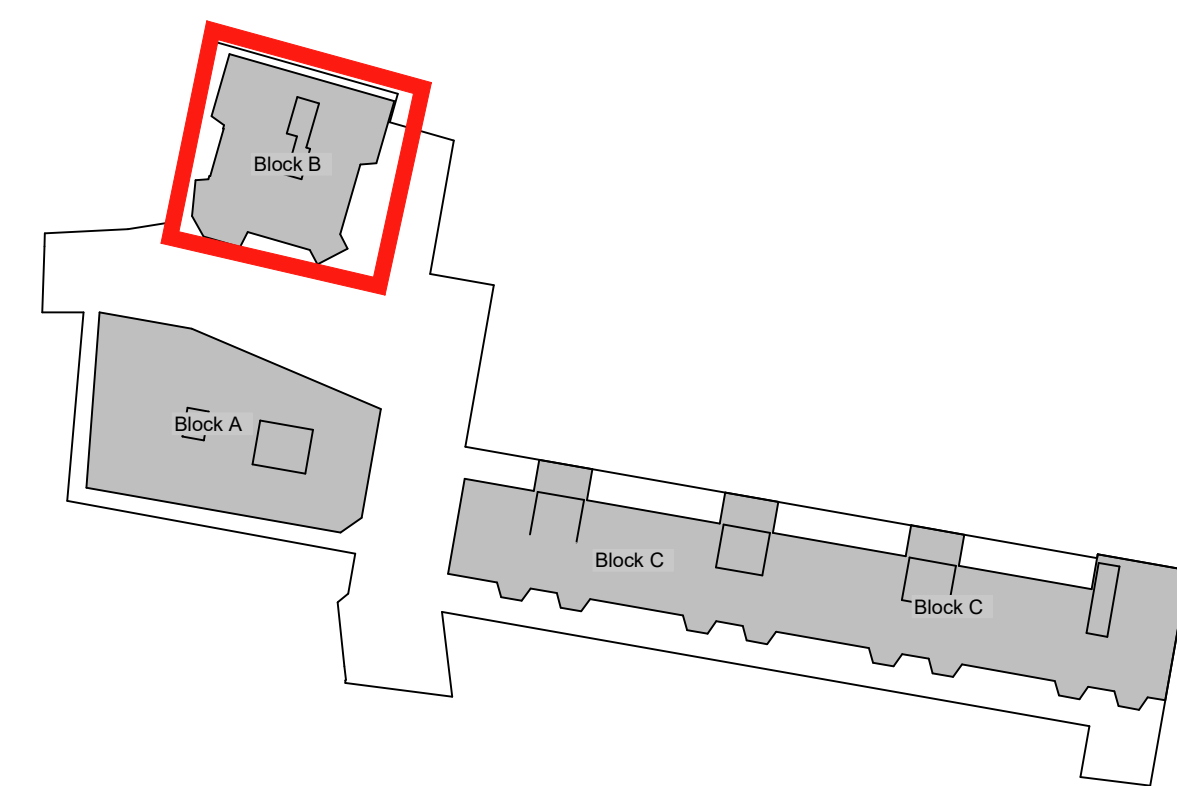
- Legend**
Ballast access surface around plant and pipework with concrete paving slabs (on pads) where more frequent access required to BM/Cfield specifications/approvals
- Roof Level - Habitat Pile Zones**
Icopal Habitat Zone Pack (osap) or equal approved mix of rocks, sand, rope and logs to attract and support a range of invertebrate and birds and encourage biodiversity - supplied as a bulk bag to create 4 habitats. (1.Rocks, 2.Logs, 3.Sand, 4.Rope.)
All to architects and engineers final position and loading approval. Icopal • web: www.icopal.co.uk
• email: info.uk@icopal.com osap

Total roof area = 380m2 inc roof equipment - 190m2 biodiverse roof area = 50% of total area
Allow for area to be irrigated using hosepipe via roof tap. Irrigation by hosepipe to maintain roof area only for use in drought periods to prevent total plant failure.
All roof build ups to B+M/PAM details and specification including soil/substrates. Where necessary seeding to be adapted to fit final system all to manufacturers warranties

Maintenance Plan for vegetated area
Check safety of all surfaces
Clear up any debris
Inspect all drainage and gutters
Remove any weeds / unwanted growth e.g. budleja repeat planting / seeding as necessary
In periods of drought water to prevent plant failure
Notify management co. of any issues.

Bauder Flora 5 Seed Mix osap

Urban Seed Mix	British	Native Provenance	P for P	RHS	Larval foodplant
Agrimonia eupatoria	Agrimony		Y	Y	
Anthyllus vulneraria	Kidney Vetch		Y	Y	
Centaurium erythraea	Common centaury				
Centaura nigra	Common Knapweed		Y		
Centranthus ruber	Red Valerian		Y		
Dipsacus fullonum	Wild teasel		Y		
Echium vulgare	Viper's-bugloss		Y		
Galium verum	Lady's Bedstraw		Y	Y	
Hippocrepis comosa	Horseshoe Vetch				
Hypericum perforatum	Perforate St John's-wort		Y		
Knautia arvensis	Field Scabious		Y	Y	
Leontodon autumnalis	Autumn Hawkbit		Y		
Leontodon hispidus	Rough Hawkbit		Y		
Leucanthemum vulgare	Oxeye Daisy		Y		
Linaria vulgaris	Common Toadflax		Y		
Lotus corniculatus	Bird's-foot-trefoil		Y	Y	
Malva moschata	Musk-mallow		Y		
Oenothera biennis	Evening Primrose		Y	Y	
Origanum vulgare	Wild Marjoram		Y		
Plantago media/ lanceolata	Hoary/Ribwort Plantain			Y	Y
Primula veris	Cowslip		Y		
Prunella vulgaris	Selfheal		Y		
Ranunculus acris	Meadow Buttercup		Y		
Ranunculus bulbosus	Bulbous Buttercup		Y		
Reseda lutea	Wild Mignonette		Y		
Rumex acetosa	Common sorrel		Y	Y	
Sanguisorba minor	Salad Burnet		Y		
Sedum acre	Biting stonecrop		Y		
Sedum album	White stonecrop		Y		
Silene vulgaris	Bladder Campion		Y		
Thymus polytrichus	Wild Thyme		Y		
Trifolium pratense	Red Clover		Y		
Annual Mix					
Agrostemma githago	Corn Cockle		Y		
Centauria cyanus	Cornflower		Y		
Chrysanthemum segetum	Corn Marigold		Y		
Matricaria recutita	Scented Mayweed		Y		
Myosotis arvensis	Field Forget-me-not		Y		
Papaver rhoeas	Common Poppy		Y		
Grasses					
Briza media	Quaking grass				
Festuca rubra	Red fescue			Y	
Cynosurus cristatus	Crested Dog's-tail		Y		
Festuca ovina	Sheeps Fescue		Y	Y	
Festuca rubra	Red Fescue		Y	Y	
Koeleria macrantha	Crested Hair-grass		Y		
Trisetum flavescens	Yellow Oat-grass		Y		



Read all in conjunction with drawings 058, 059 and 060

REV	DESCRIPTION	APP	DATE
F	additional seeded areas added to C Field markup	CN	12.09.23
E	updated BM base with devit change	CN	10.09.23
D	ballast edging strip added	CN	17.08.23
C	devit clearance areas commended	CN	16.08.23
B	latest BM roof layout added to base drawing	CN	11.08.23
A	latest BM roof added for planning	CN	21.07.23

BauderGREEN Flora 5 Seed Mix Details OSAP
UK Native British Provenance Seed Mix, 38 species including:
- 28 wildflowers
- 6 annuals
- 2 sedge and grasses
- 2 sedum species
- 34 wildflowers classed as RHS Perfect for pollinators,
9 butterfly and moth larval food plants
Mix percentages; 80% perennial wildflowers, 10% annuals and 10% grasses

- Key Specification Features**
- Suitable for urban areas and high rise inner city locations.
 - Lengthy flowering season – April to October.
 - Contains all the species listed in the 'London Seed Mix'.
 - Designed to deliver maximum biodiversity credits for BREEM.
 - Suited to dry conditions with sedum species and drought tolerant wildflowers.
 - Species include Red Valerian, a priority species for London, and five annuals to give first year colour.

Ecological Value
The Flora 5 Seed Mix has a high diversity of wildflower species selected to provide rich nectar sources over a long flowering period on dry roof locations. Plants with long flower tubes, such as Wild Red Clover and Vetch species, deliver valuable nectar sources for long-tongued bumblebee species, including London priority species the Brown-banded Carder Bee. The mix also comprises larval food plants for priority butterfly species including Kidney Vetch for the Small Blue and Red Fescue for the Marbled White. Plant species of declining chalk grassland, a priority habitat in many BAPs, are present and include Quaking Grass and Wild Marjoram. The seeds of Black Knapweed, Wild Teasel and Common Toadflax offer food sources for birds and overwintering sites for invertebrates. The selected plant species are typical of open mosaic habitat and therefore in combination with mounded bare areas of substrate will provide the Black Redstart with a foraging habitat. Red Valerian and Evening Primrose are two non-native species included in the mix that are naturalised within the London flora and are a good nectar source for foraging moths. The mix also contains native or naturalised sedums that provide evergreen structure in the winter and can support specialist invertebrates, such as the notable bug species Chlamydatius Evanescons.

Liddell Road
Planting Plan Detail
Biodiverse brown roof

DATE	20.07.23	DRAWN	KK
SCALE	var@A1	CHECKED	NT
STATUS	Stage 4	APPROVED	NT
DWG. NO	D0461_059 F		