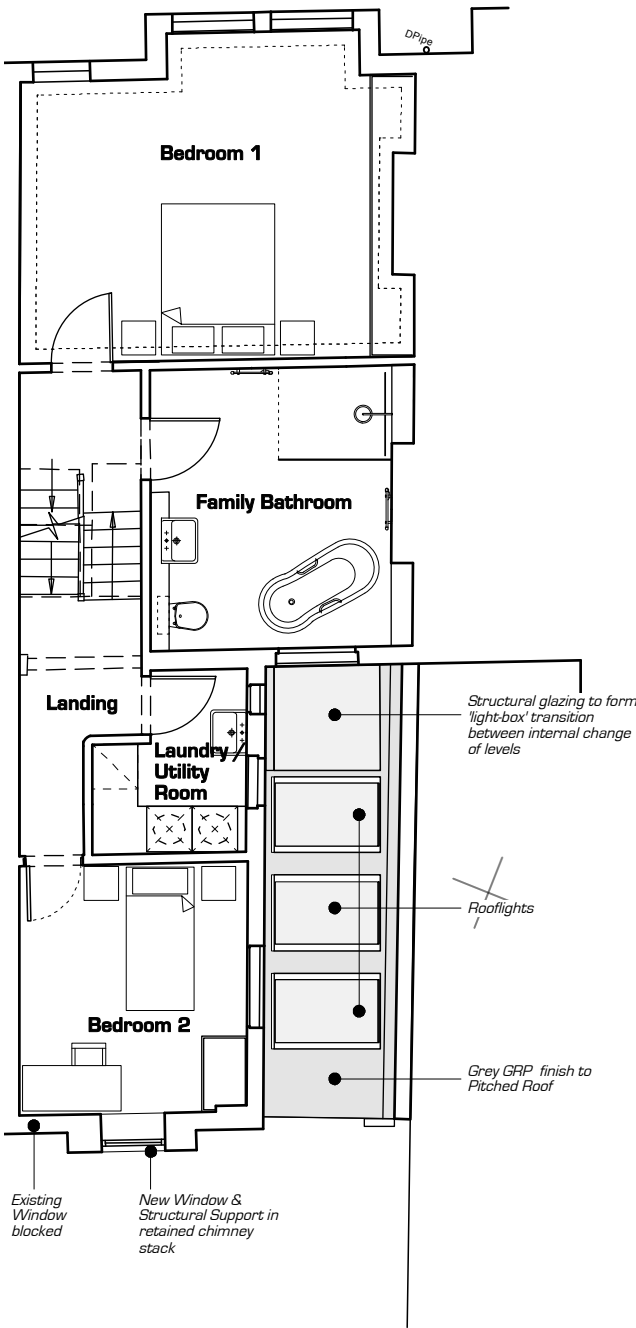
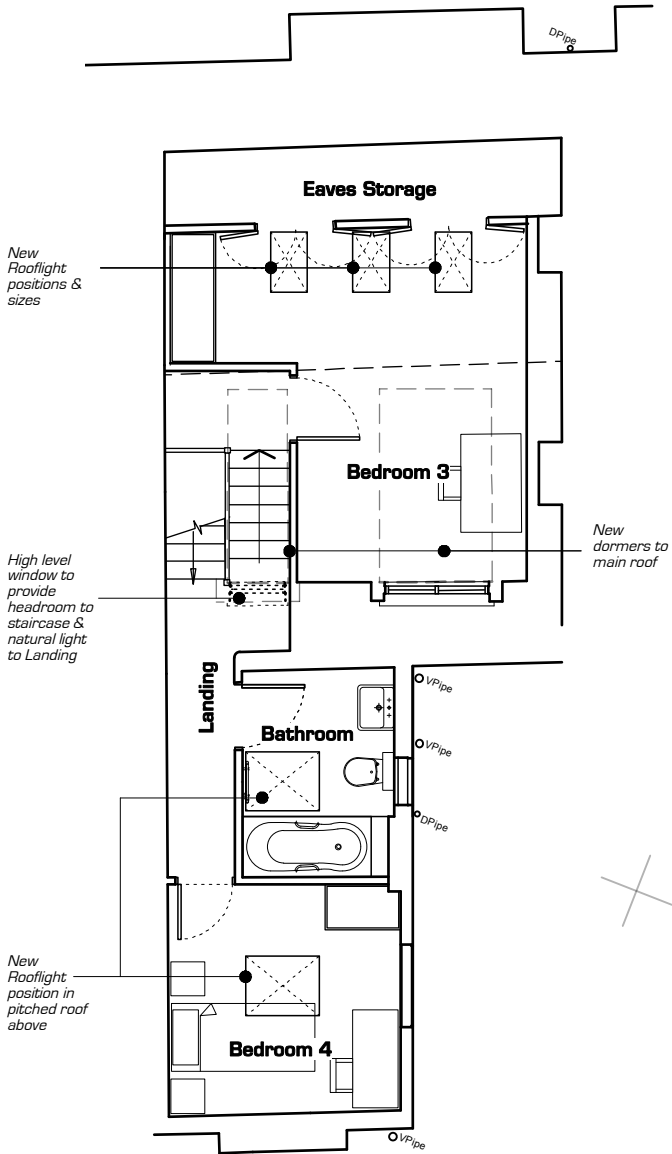


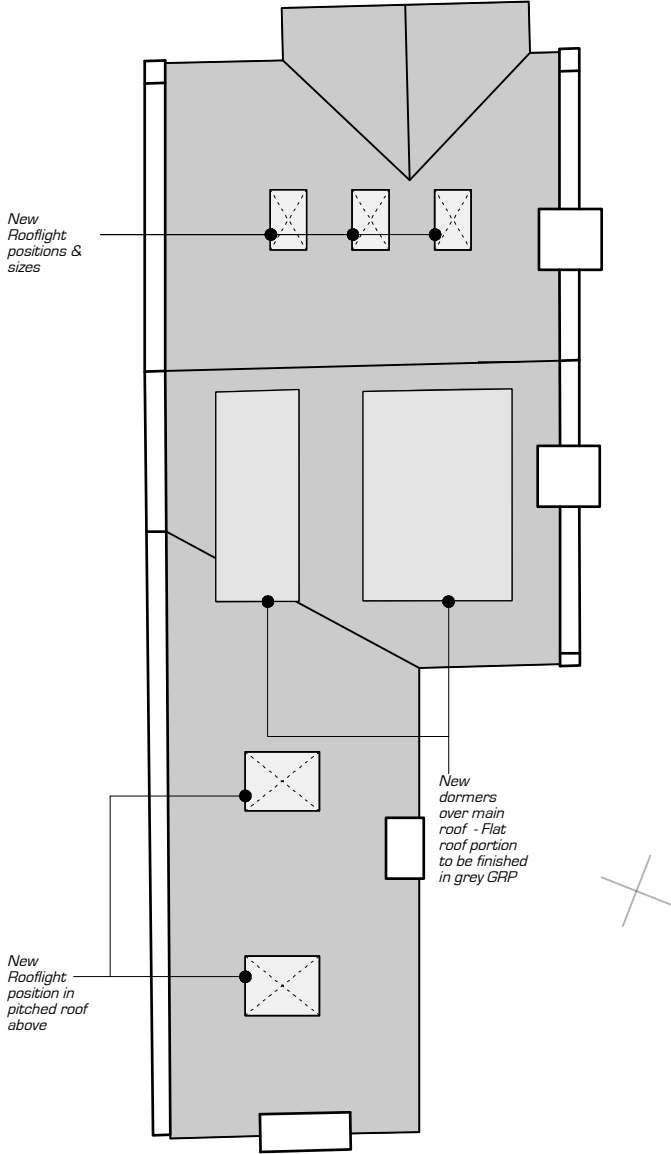
Proposed Ground Floor Plan



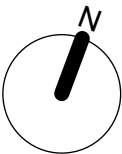
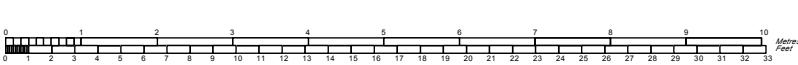
Proposed First Floor Plan




Proposed Second Floor Plan



Proposed Roof Plan



<div>○ DO NOT SCALE FROM THIS DRAWING.</div> <div>○ ALL DIMENSIONS SHOWN ARE IN MILLIMETRES UNLESS STATED OTHERWISE.</div> <div>○ THIS DRAWING IS ONLY ISSUED FOR THE PURPOSES INDICATED.</div> <div>○ THE CONTRACTOR SHALL VERIFY ALL DIMENSIONS AND LEVELS ON SITE AND ANY ERRORS OR DISCREPANCIES DISCOVERED SHALL BE REPORTED TO THE ARCHITECT BEFORE THE WORK IS PUT IN HAND.</div> <div>○ THIS DRAWING IS TO BE READ IN CONJUNCTION WITH ALL OTHER RELEVANT DOCUMENTS.</div> <div>○ THIS DRAWING IS THE COPYRIGHT OF THE CHARTERED PRACTICE ARCHITECTS LIMITED AND SHALL NOT BE REPRODUCED BY THIRD PARTIES WITHOUT THE WRITTEN CONSENT OF CPA LTD.</div>	<div></div> <div><b>CPA Ltd</b></div> <div><b>Chartered Practice Architects Ltd</b></div> <div>Askew Studio</div> <div>159 Askew Road</div> <div>London W12 9AU</div> <div>Tel. 020 8743 9535</div> <div>Fax. 020 8743 4875</div> <div>info@cparchitects.com</div> <div>www.cparchitects.com</div>	project title		proj. no.	<div><div>purpose of issue</div><div>PRELIMINARY</div><div>TOWN PLANNING</div><div>BUILDING CONTROL</div><div>PARTY WALL</div><div>TENDER</div><div>CONSTRUCTION</div><div>-</div></div>		
		12 Constantine Road, London NW3 2NG		12CR			
		drawing title		dwg. no.			
		Proposed Site Layout & Floor Plans		400			
		date	02/08/23	scale @ A3		1:100	rev
		drawn by	CadMap / WH	checked by		WH	
		revision	date: 30/10/23.			by	
		Dormers revised in line with email comments from Planning Officer of: 30/10/23.					
						checked	MH