



Above: Scaled south elevation that shows the accurate positioning for the counter and it's housing



Counter

Device vital statistics:

Height 335 mm (13.2")

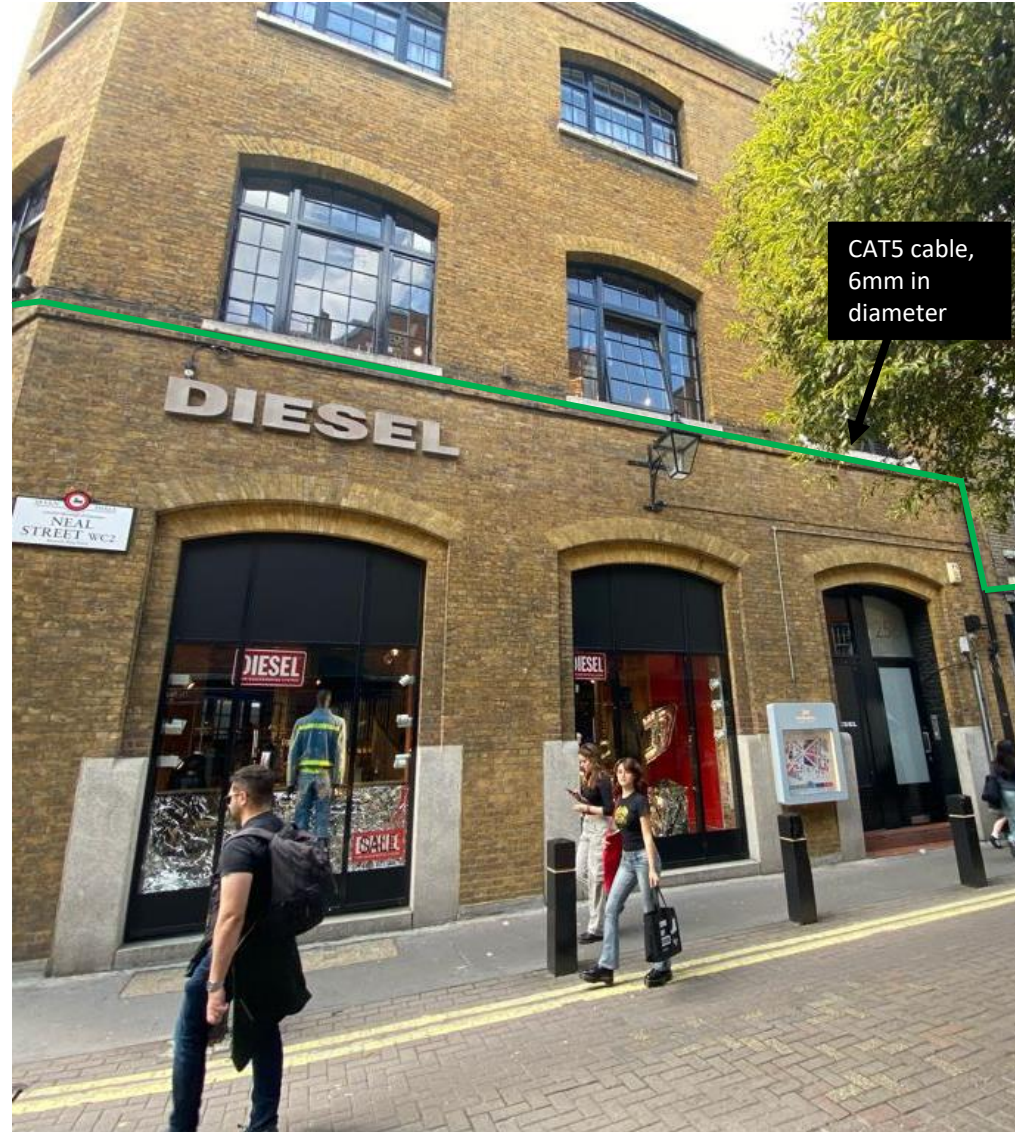
Width 200mm (7.9")

Depth 230mm (9.1")

Weight c.5kg (11lb)

The counter is to be mounted to the exterior of the building using 4 x coach bolts. 4 x 10mm (0.4") holes will be drilled into the mortar (no drilling into the brick will be permitted).

Cabling Route



Counter



CAT5 Cable

Cabling will be discreetly run from the counter across the top of the brick ledge located just beneath the counter, and to the external power socket located above the entrance to the LIDS store. Permission to use the socket has been granted to Springboard by CBRE.