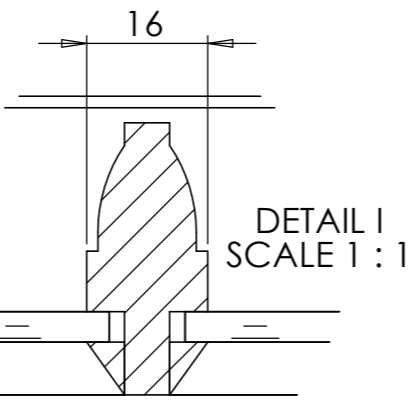
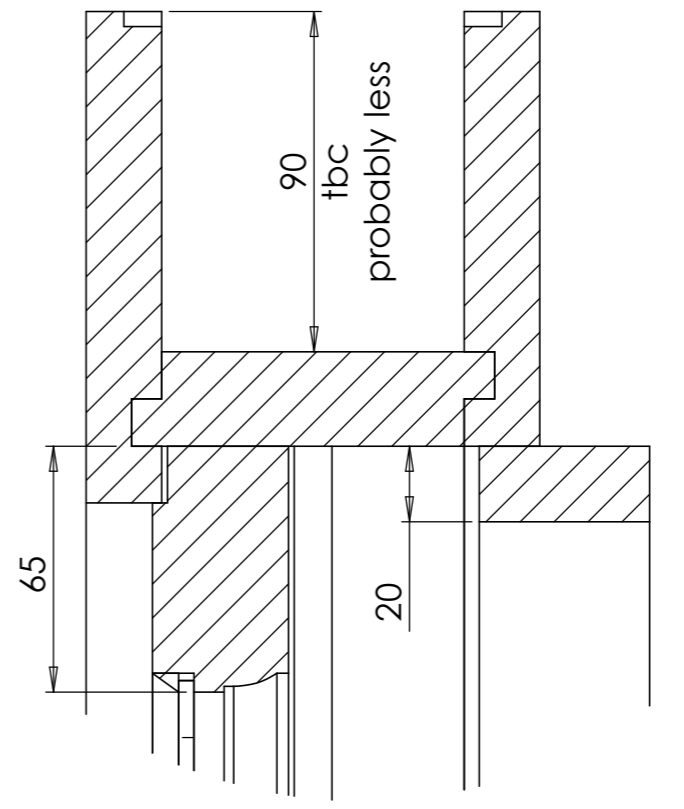


SECTION B-B

DETAIL F
SCALE 1 : 2



DETAIL I
SCALE 1 : 1

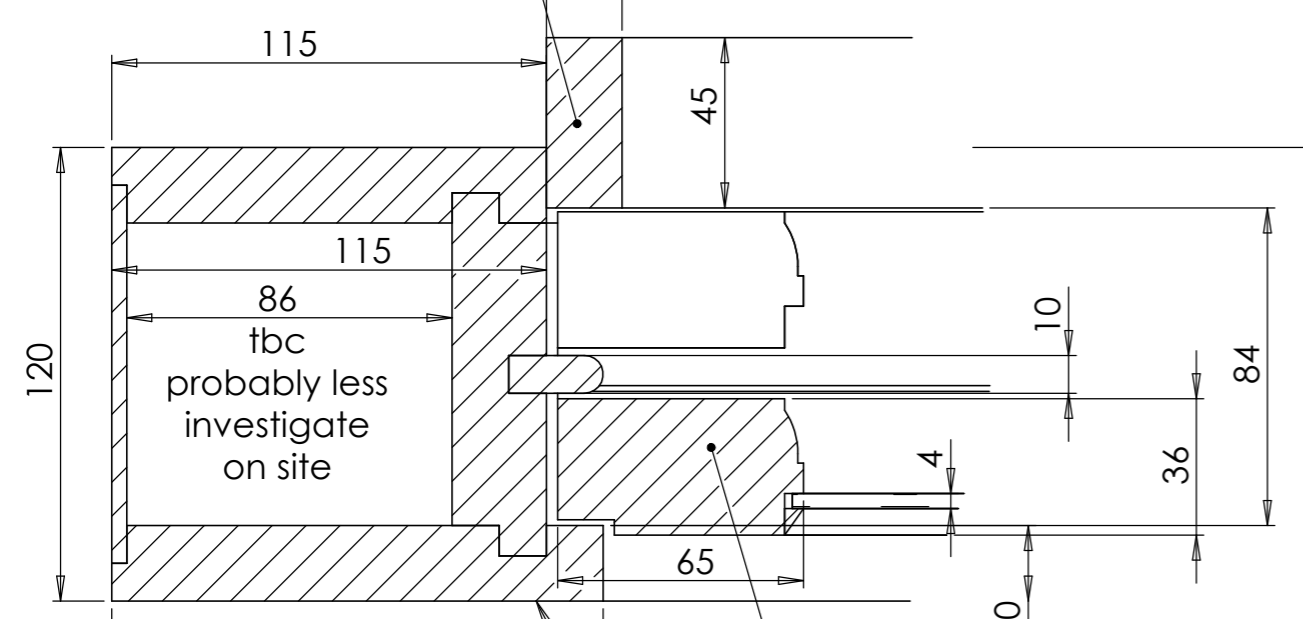


DETAIL G
SCALE 1 : 2



SECTION A-A

staff bead has been replaced to accommodate thicker casement



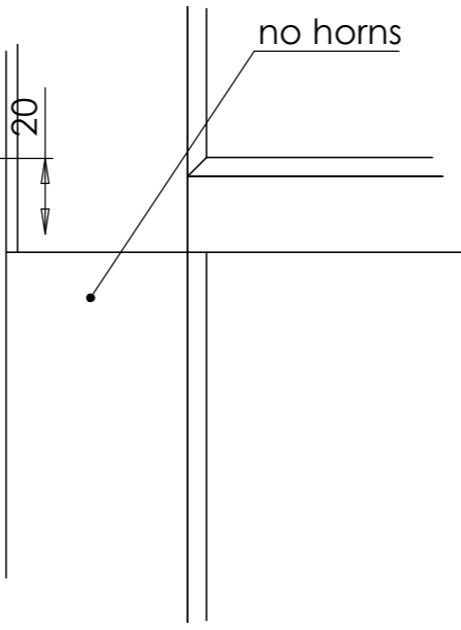
DETAIL D
SCALE 1 : 2

casements have been replaced and are thicker than original

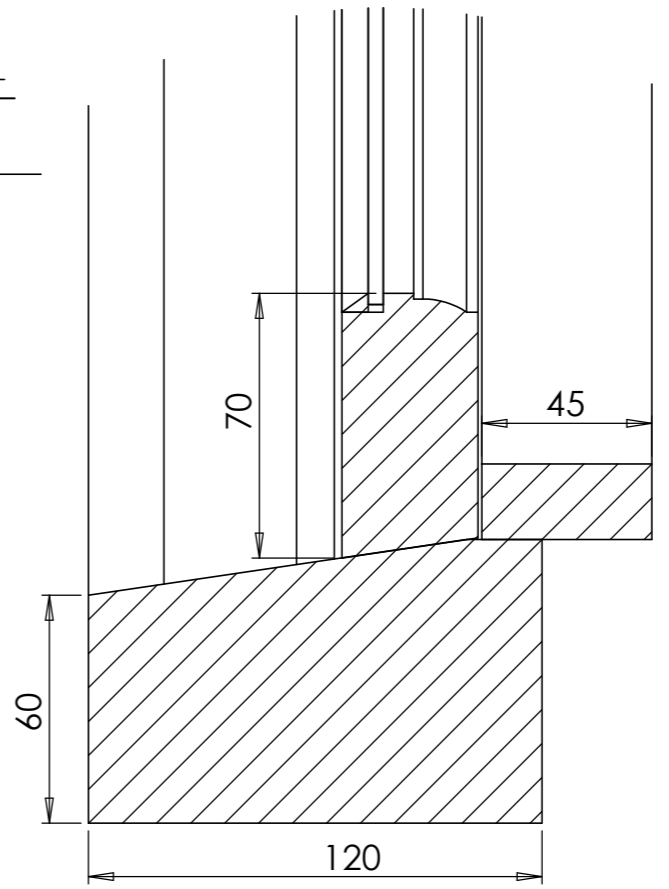
external plaster reveal depth must be maintained

TYPE9 WSR3

DETAIL H
SCALE 1 : 2



DETAIL E
SCALE 1 : 2



IMPORTANT INFORMATION:
 - DO NOT SCALE THIS DRAWING, DRAWINGS AVAILABLE ON REQUEST.
 - ALL DIMENSIONS ARE IN MILLIMETRES, UNLESS OTHERWISE STATED.
 - THIS DRAWING IS CONFIDENTIAL AND THE COPYRIGHT IS VESTED IN STUDIOLET LTD.
 - IT MUST NOT BE COPIED, LENT OR DISCLOSED TO A THIRD PARTY, WITHOUT THE WRITTEN CONSENT OF STUDIOLET LTD.
 - IT IS SUBJECT TO RECALL & REVISION CONTROL.

NOTES:
Studiolet Ltd
 26 Cleveland Gardens, London W2 6DE

REVISION HISTORY			
REV A	Primary		
REV B			
REV C			
REV D			
REV E			

DO NOT SCALE THIS DRAWING, DWG'S AVAILABLE ON REQUEST.
 ALL DIMENSIONS IN MM UNLESS OTHERWISE NOTED

	NAME	SIGNATURE	DATE
DRAWN BY:	HM		10 July 2023
LAST EDIT DATE:			
APPROVED BY:			

DRAWING ISSUE STATUS:		
MATERIAL:	FINISH:	SHEET SIZE A3

CUSTOMER: Studiolet
 PROJECT: 64-65 Guilford Street

TITLE:
 Existing windows
 Type9

DWG NO. ST-GU-189	REVISION A	THIRD ANGLE PROJECTION
----------------------	---------------	------------------------

IMPORTANT INFORMATION:

- DO NOT SCALE THIS DRAWING, DRAWINGS AVAILABLE ON REQUEST.
- ALL DIMENSIONS ARE IN MILLIMETRES, UNLESS OTHERWISE STATED.
- THIS DRAWING IS CONFIDENTIAL AND THE COPYRIGHT IS VESTED IN STUDIOLET LTD.
- IT MUST NOT BE COPIED, LENT OR DISCLOSED TO A THIRD PARTY, WITHOUT THE WRITTEN CONSENT OF STUDIOLET LTD.
- IT IS SUBJECT TO RECALL & REVISION CONTROL.

NOTES:

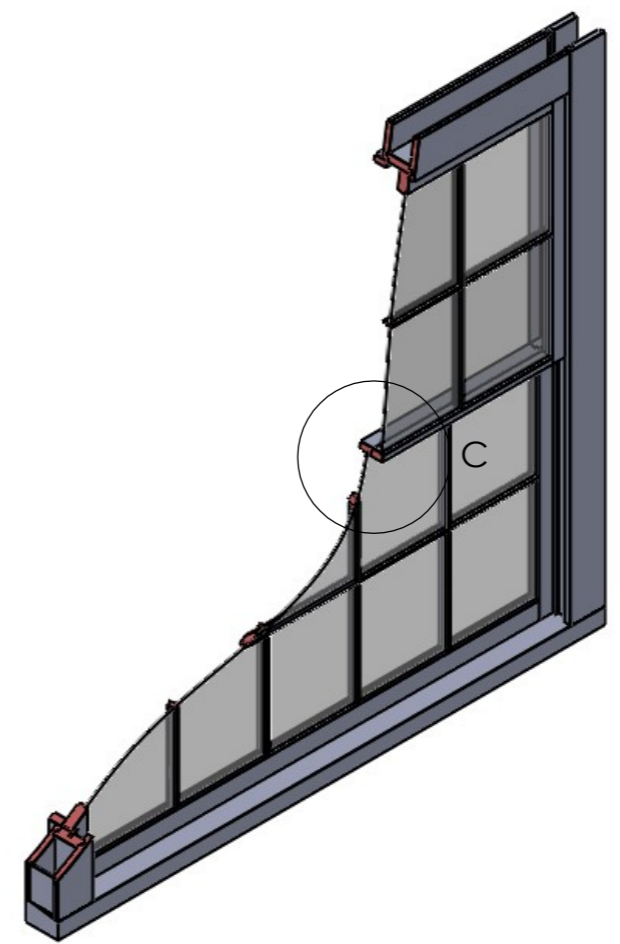
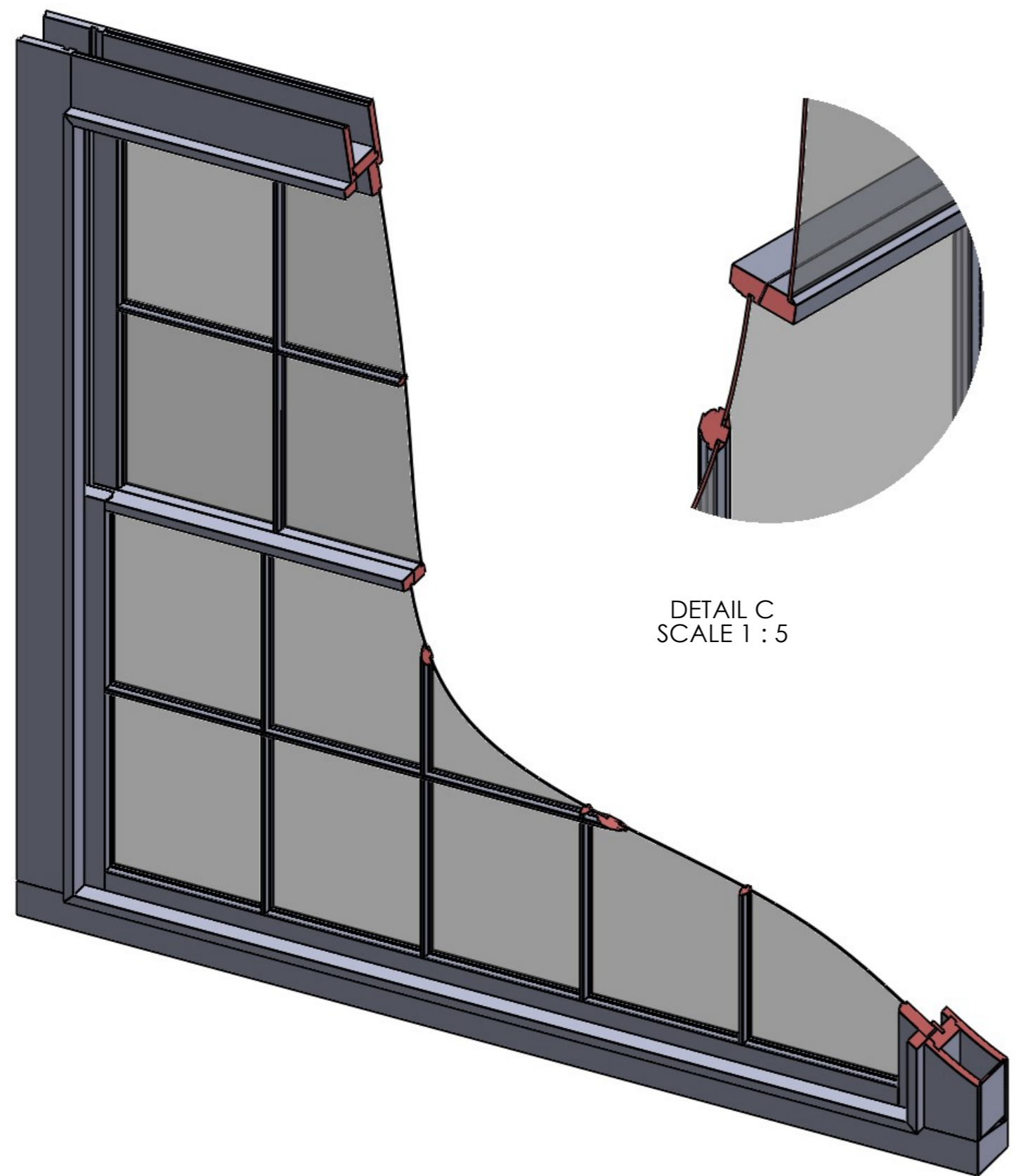
Studiolet Ltd

26 Cleveland Gardens, London W2 6DE

NOTES

- 1 These are the details of the existing Type9 windows.
- 2 Permission should be sought from the listing authority to carry out any work on the windows.
- 3 The box depth needs to be confirmed on site. Plaster has not been removed to ascertain this thickness.
- 4 It is critical that the plaster reveal on the outside (ie the amount of frame showing beyond the render), is maintained.
- 5 It is hoped that the listing authority may agree to the fitting of some draught seals following consultation.
- 6 The cill is such a poor state that it is not possible to determine the original detail with certainty.
- 7 The casements have clearly been replaced at a later date and are thicker than the originals.

DETAIL C
SCALE 1 : 5



TYPE9 WSR3

REVISION HISTORY

REV A	Primary
REV B	
REV C	
REV D	
REV E	

DO NOT SCALE THIS DRAWING, DWG'S AVAILABLE ON REQUEST.

ALL DIMENSIONS IN MM UNLESS OTHERWISE NOTED

	NAME	SIGNATURE	DATE
DRAWN BY:	HM		10 July 2023
LAST EDIT DATE:			
APPROVED BY:			

DRAWING ISSUE STATUS:

MATERIAL:	FINISH:	SHEET SIZE A3
-----------	---------	------------------

CUSTOMER: Studiolet

PROJECT: 64-65 Guilford Street

TITLE:
Existing windows
Type9

DWG NO. ST-GU-189	REVISION A	
----------------------	---------------	--