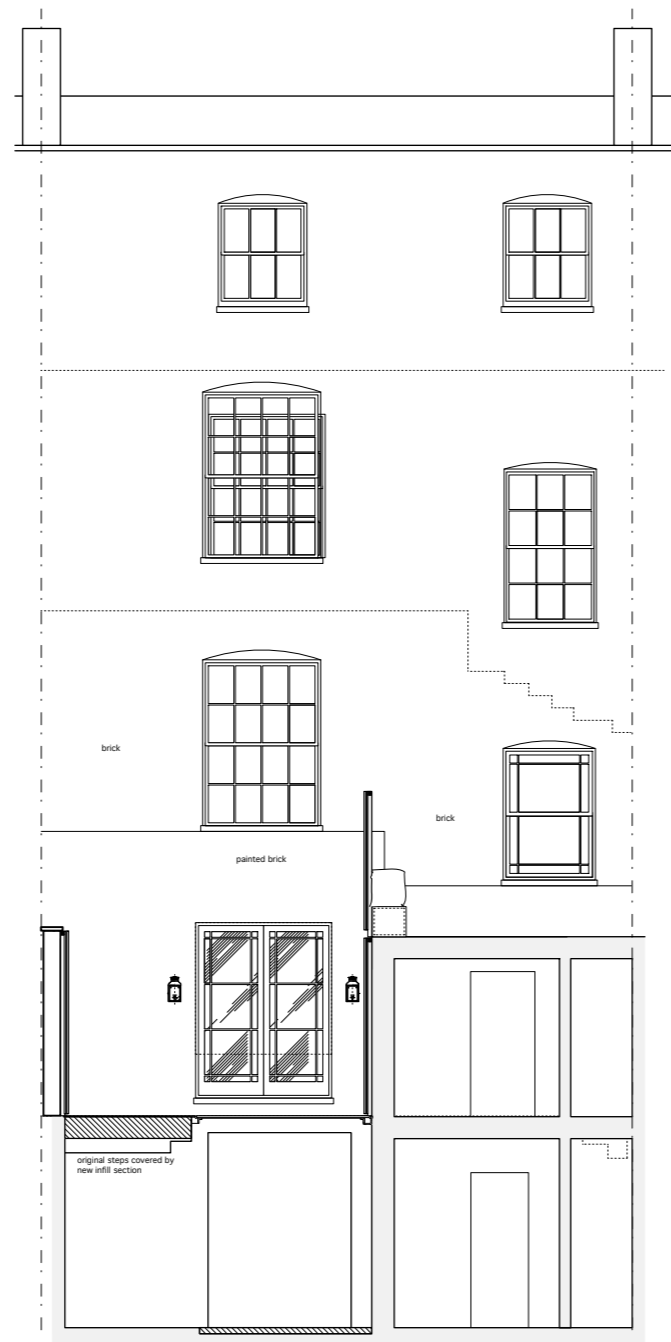
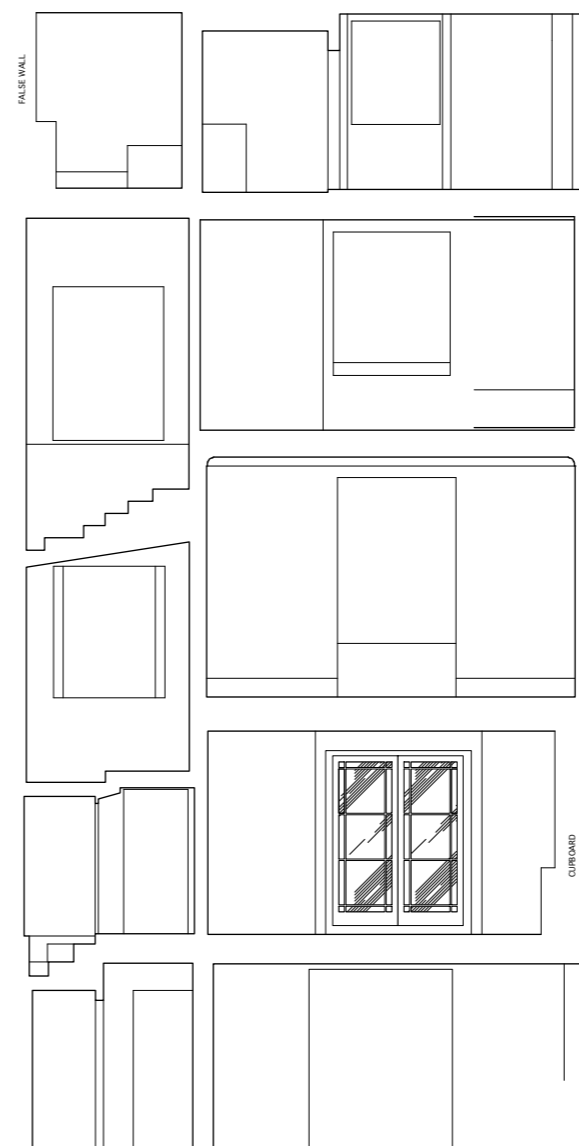


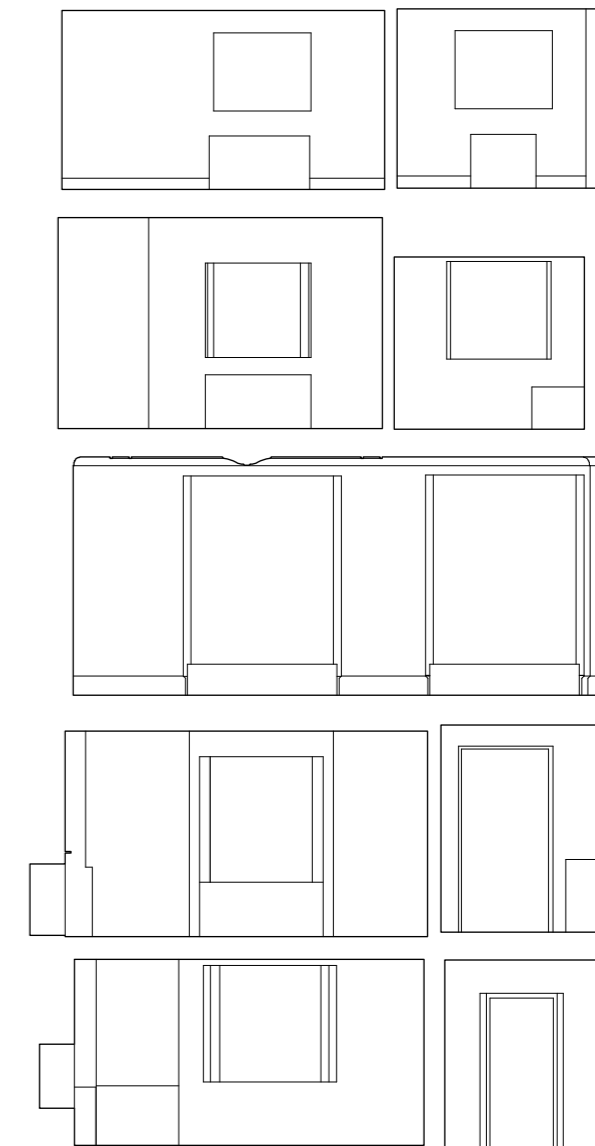
REAR ELEVATION (Albany Street)



REAR ELEVATION SECTION



SECTION C C



SECTION D D



DATUM 45.00m

DATUM 45.00m

NOTES
The contractor is to check all dimensions on site

A	As Existing	26.10.23
no.	revision	
dwg type		PLANNING
dwg status		CONSTRUCTION
Sacks Maguire Architects Unit 10 Iron Bridge House, 3 Bridge Approach London NW1 8BD Telephone 020 7722 9298 M: 07956963938 Project 2 CHESTER PLACE, LONDON		
Title		
REAR ELEVATION and SECTION CC & DD		
Client		
JANIE SCHAFFER		
scale	drawn	date
1:50	djb/ET	JULY 07
job number	drawing number	revision
449	006	A