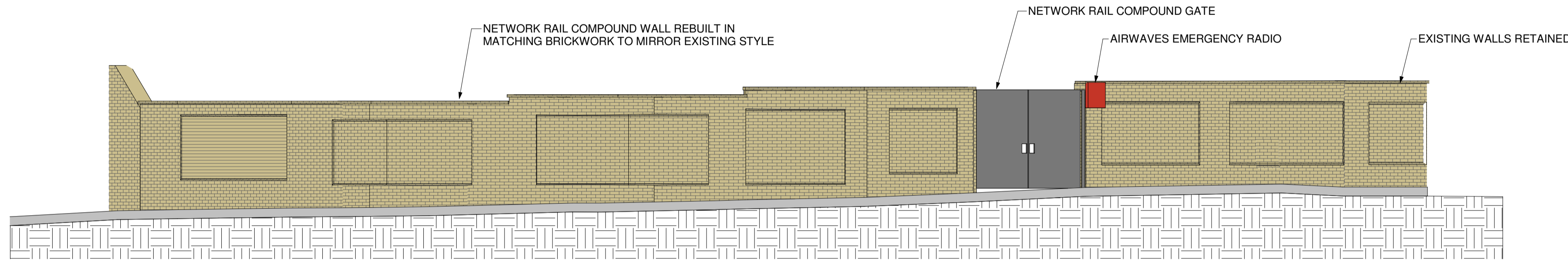


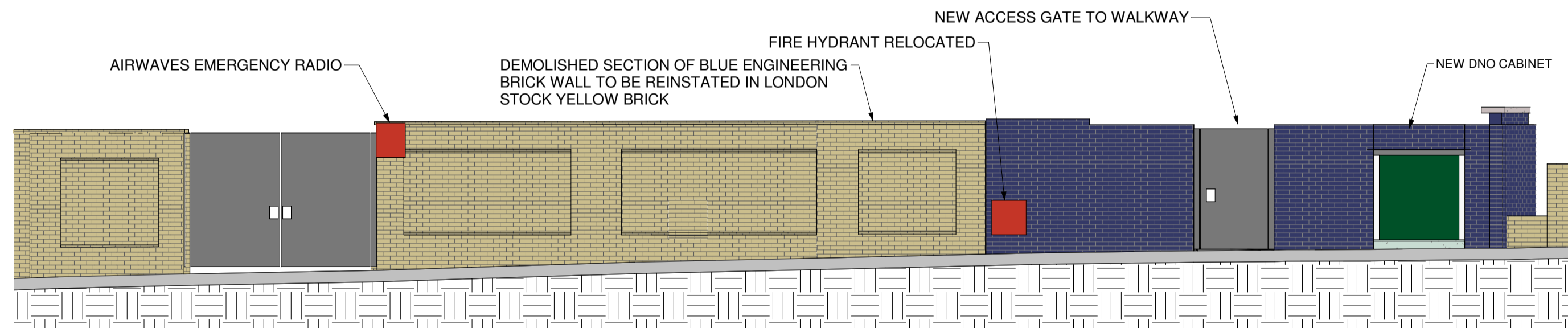
**NORTHERN PARAPET INTERNAL ELEVATION 'J' - PROPOSED**

1 : 75



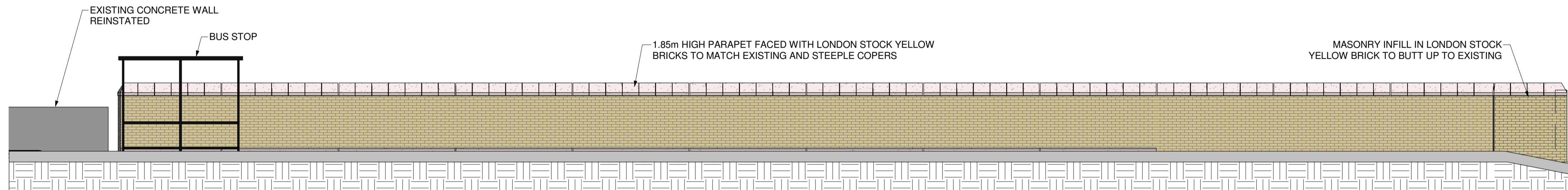
**COMPOUND WALL ELEVATION 'K' - PROPOSED**

1 : 75



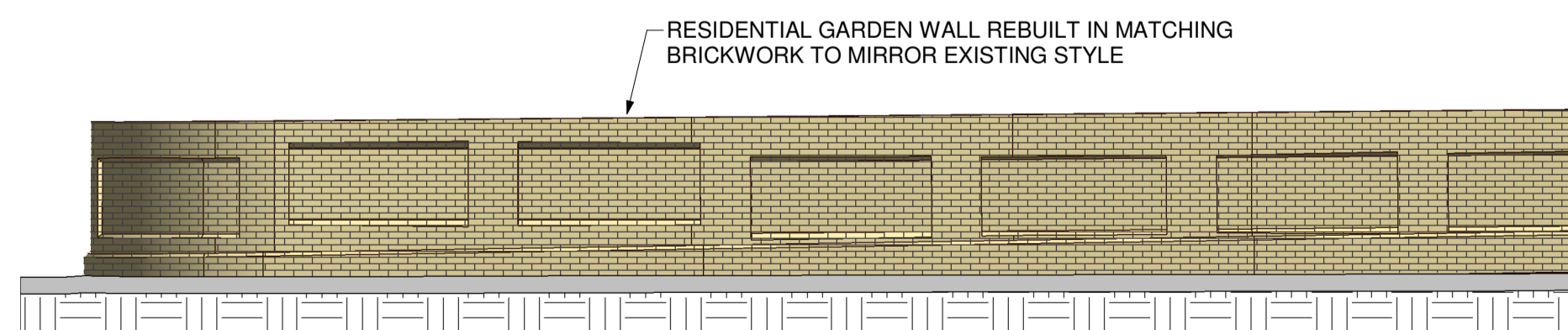
**COMPOUND WALL ELEVATION 'L' - PROPOSED**

1 : 75



**SOUTHERN PARAPET INTERNAL ELEVATION 'M' - PROPOSED (FOR INFORMATION ONLY - NOT PART OF THE PLANNING CONSENT APPLICATION)**

1 : 75



**GARDEN WALL ELEVATION 'N' - PROPOSED**

1 : 75

| SAFETY, HEALTH AND ENVIRONMENTAL                                                                                                                                   |
|--------------------------------------------------------------------------------------------------------------------------------------------------------------------|
| IN ADDITION TO THE HAZARDS OR RISKS NORMALLY ASSOCIATED WITH THE TYPES OF WORK DETAILED ON THIS DRAWING, THE FOLLOWING SIGNIFICANT RESIDUAL RISKS SHOULD BE NOTED. |
| <b>CONSTRUCTION:</b>                                                                                                                                               |
|                                                                                                                                                                    |
| <b>MAINTENANCE, CLEANING AND OPERATION :</b>                                                                                                                       |
|                                                                                                                                                                    |
| <b>DECOMMISSIONING OR DEMOLITION :</b>                                                                                                                             |
|                                                                                                                                                                    |

- NOTES**
- DO NOT SCALE OFF THIS DRAWING.
  - SHOULD THERE BE ANY CONFLICT BETWEEN THE DETAILS INDICATED ON THIS DRAWING AND THOSE INDICATED ON OTHER DRAWINGS THE ENGINEER SHOULD BE INFORMED PRIOR TO CONSTRUCTION ON SITE.
  - ALL DRAWINGS ARE IN MILLIMETRES UNLESS OTHERWISE STATED.
  - IT IS THE RESPONSIBILITY OF THE CONTRACTOR TO EXECUTE THE WORKS AT ALL TIMES IN STRICT ACCORDANCE WITH THE REQUIREMENTS OF THE HEALTH AND SAFETY AT WORK ACT 1974 AND CDM REGULATIONS 2015.
  - THIS DRAWING IS TO BE READ IN CONJUNCTION WITH ALL OTHER RELEVANT DRAWINGS.
  - ALL LEVELS ARE IN METRES AND RELATE TO ORDNANCE DATUM UNLESS STATED OTHERWISE.
  - ORDNANCE SURVEY DATA MUST NOT BE PASSED ONTO ANY OTHER CONTRACTOR OR THIRD PARTY WITHOUT PERMISSION FROM NETWORK RAIL'S OS MAP TEAM AND / OR WITHOUT YOUR CONTRACTOR DULY SIGNED-UP TO THE OS FSDC CONTRACTOR LICENCE.
  - DRAWING BASED ON 3D TOPOGRAPHICAL SURVEY PRODUCED BY SGS LTD IN JUNE 2022.
  - ABUTMENT THICKNESS SHOWN IS INDICATIVE, BASED ON INTRUSIVE INVESTIGATION CARRIED OUT BY BRIDGEWAY CONSULTING LIMITED.
  - ALL LINES ARE AC OLE ELECTRIFIED BELOW AGAR GROVE EXCEPT SIDING.
  - THE BRIDGE IS LOCATED WITHIN A CONSERVATION AREA.

FOR SECTION LOCATIONS REFER TO DRAWING 165223-BNU-DRG-ECV-2200

**KEY OF FINISHES**

|  |                                      |
|--|--------------------------------------|
|  | STAFFORDSHIRE BLUE ENGINEERING BRICK |
|  | LONDON STOCK YELLOW BRICK            |
|  | BATTLESHIP GREY RAL 7031 PAINT       |
|  | PRE-CAST CONCRETE                    |
|  | WEATHERING STEEL                     |

|     |                                 |    |     |          |
|-----|---------------------------------|----|-----|----------|
| P03 | Recess shown on reinstated wall | PS | TF  | 17/10/23 |
| P02 | DNO Cabinet Shown               | PS | TF  | 24/07/23 |
| P01 | First Issue                     | PS | TF  | 08/11/22 |
| REV | DESCRIPTION                     | BY | CHK | DATE     |

**HBPW**  
CONSULTING ENGINEERS  
43 BRIDGEGATE  
RET FORD  
NOTTINGHAMSHIRE  
DN22 7UX  
Tel: (01777) 869896  
www.hbpw.co.uk

CLIENT: **Network Rail**

CONTRACTOR: **bam nuttall**

|                      |                 |
|----------------------|-----------------|
| HBPW PROJECT NUMBER: | HBPW MODEL REF: |
| SL07396              | STR01           |

PROJECT:  
**SPC1/14 AGAR GROVE OVERBRIDGE**  
Location: London St Pancras to Kentish Town | ELR: SPC1  
Mileage: 000m 1661yds | OS Grid Ref: TQ.297 844

DRAWING:  
**PROPOSED INTERNAL ELEVATIONS**

STATUS:  
**PLANNING**

|                   |    |           |    |
|-------------------|----|-----------|----|
| PROJECT ENGINEER: | TF | DRAWN:    | PS |
| CHECKED:          | TF | APPROVED: | PM |

|          |        |       |              |           |
|----------|--------|-------|--------------|-----------|
| DATE:    | SCALE: | SIZE: | SUITABILITY: | REVISION: |
| 07/11/22 | 1:75   | A1    | S4           | P03       |

DRAWING NUMBER:  
**165223-BNU-DRG-ECV-002202**

