

LEGEND

 - SMOKE DETECTOR

 - SMOKE DETECTOR WITH
BASE SOUNDER

 - SMOKE DETECTOR (IN ROOF VOID)

 - HEAT DETECTOR

 - HEAT DETECTOR WITH
BASE SOUNDER

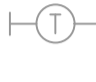
 - END OF LINE UNIT

 - SOUNDER

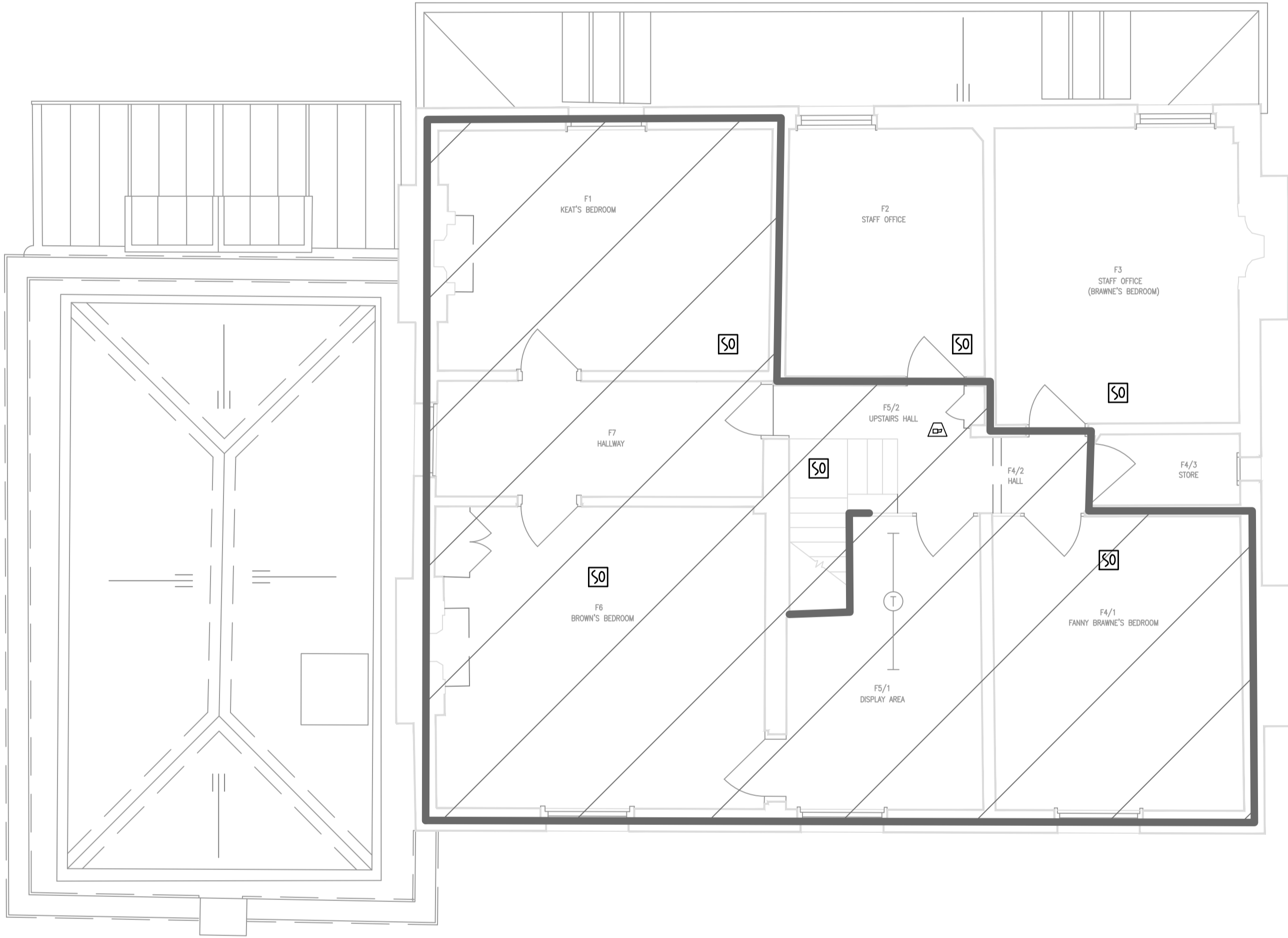
 - MANUAL BREAK GLASS UNIT

 - MAIN FIRE ALARM PANEL

 - FIRE ALARM REPEATER PANEL

 - TRACK LIGHTING SYSTEM WITH 6 NO. SPOTLIGHTS
(EXISTING RETAINED)

 - VISITOR ACCESSIBLE



FIRST FLOOR

notes

1. SIGNAGE IS UNAFFECTED BY THIS PROPOSAL.
2. WHERE PRACTICAL AND IT DOES NOT IMPAIR ITS OPERATION, ALL NEW & EXISTING DEVICES/EQUIPMENT ARE TO BE PAINTED (EVENLY & WITHOUT RUNS) SO AS TO MATCH THE SURROUNDING WALL/CEILING SURFACE TO WHICH IT IS FIXED.
3. ALL REDUNDANT CABLING IS TO BE REMOVED AND ANY SURFACES MADE GOOD.

Notes
Do not scale. All dimensions to be checked on site.
Errors to be reported to supervising officer.

Rev		Drawn	Date
C	SYMBOLS REDUCED IN SIZE AND NOTES 2 & 3 ADDED.	S.M.C.	17.07.23
B	DESCRIPTION FOR TRACK LIGHTING AMENDED.	S.M.C.	15.12.22
A	INCORPORATING ARCHITECTS COMMENTS.	S.M.C.	09.11.22



P.G.Wilkinson BSc MSc MRICS
City Surveyor

CITY SURVEYOR'S DEPARTMENT
Corporate Property Group:
Plans & Research Section

Project :
KEATS HOUSE
10 KEATS GROVE
LONDON NW3 2RR

Drawing :
FIRST FLOOR
EXISTING FIRE ALARM
SYSTEM LAYOUT

Scale at A1 : 1:50 Drawn by : S.M.C.

Des : S.M.C. App :

Date : NOV 21 Pro code UPRN

Drawing No: COL/KH/68/01

Revision	C					
----------	---	--	--	--	--	--