

PHOTO RECORD

THE CITY OF LONDON CORPORATION

**KEATS LIBRARY
10 KEATS GROVE, HAMPSTEAD
LONDON NW3 2RR**

CCTV, FIRE AND INTRUDER ALARM SYSTEMS



G1

ENTRANCE



External Beacon

Fire Alarm

Proposed location for a wireless external beacon.

G2

HALL



New Fire Alarm Panel &
Ancillaries Location

Manual Break Glass Unit

VIEW 1

FROM HALL LOOKING TOWARDS MAIN FRONT DOOR

Fire Alarm

Existing manual break glass to be replaced with a wireless type and relocated below new fire alarm panel. Cabling to be removed.

Proposed location for a new fire alarm panel, ancillaries and power supply units all housed within a white painted timber cupboard – See drawing COL/KL/68/10 for further details.

Note:- Redundant holes within the wall will be filled and painted.



Fire Alarm Panel

VIEW 2

FROM MAIN FRONT DOOR LOOKING TOWARDS STORE DOOR (G3) AND MAIN LIBRARY DOOR (G5)

Fire Alarm

Existing fire alarm panel, power supply, ancillaries and cabling to be removed.

Note:- Redundant holes within the wall will be filled and painted.

G3

STORE



Smoke Detector

Fire Alarm

Proposed location for a new wireless smoke detector mounted onto a base sounder and beacon.

G4

MAIN LIBRARY

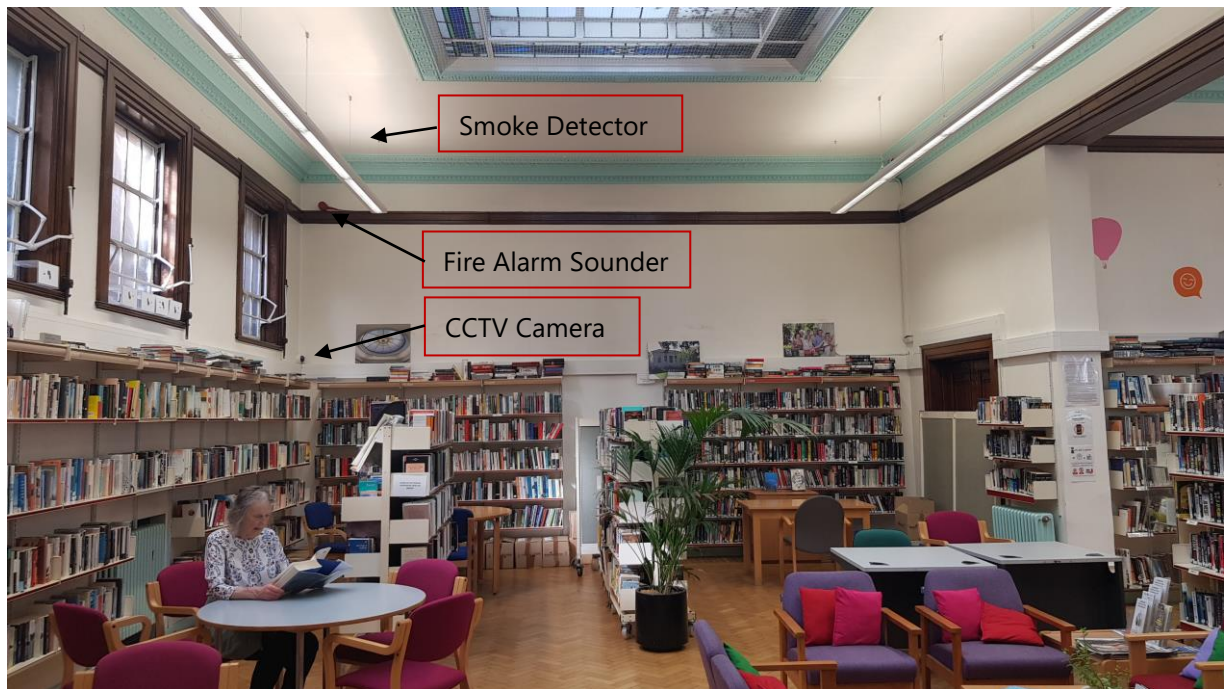


VIEW 1

LOOKING TOWARDS STAFF AREA DOOR

Fire Alarm

Proposed location for a new wireless smoke detector mounted onto a base sounder and beacon.



VIEW 2

LOOKING TOWARDS STORE REAR DOOR (G3)

CCTV

Fire Alarm

New camera to be direct replacement and connected to existing cabling.

Proposed location for a new wireless smoke detector mounted onto a base sounder and beacon.

Existing fire alarm sounder and cabling to be removed.

Note:- Redundant holes within the wall will be filled and painted.



Intruder Detector

Intruder Alarm Siren

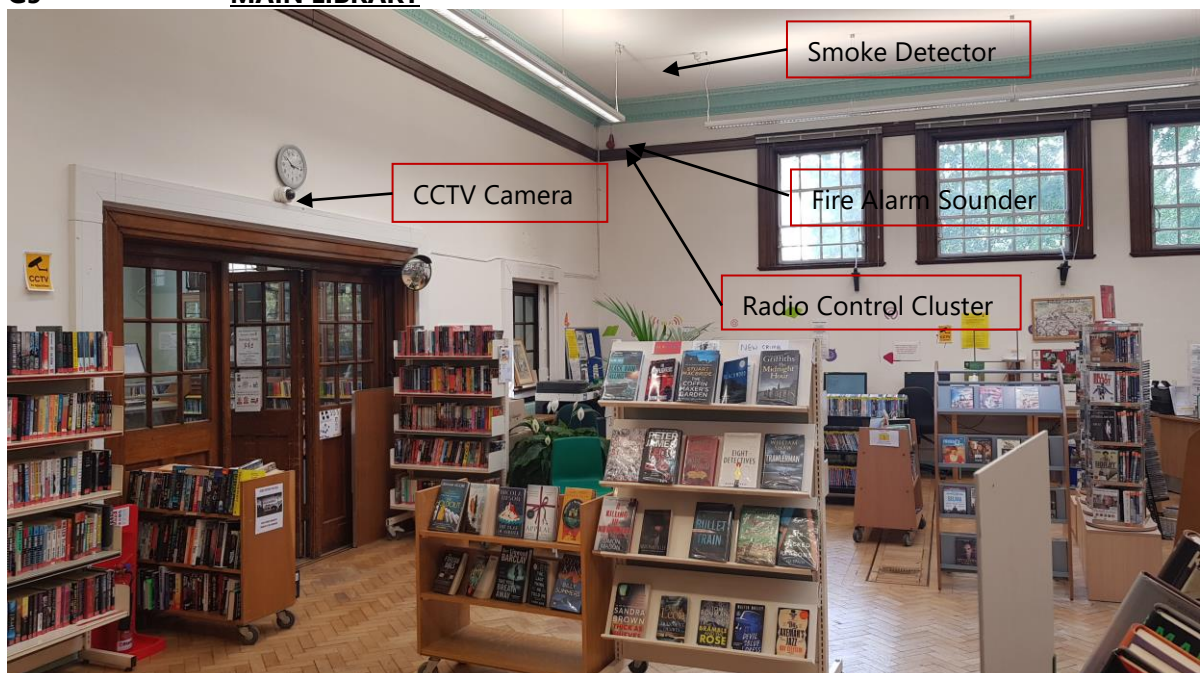
VIEW 3

Intruder Alarm

Proposed location for a new intruder detector and siren.

G5

MAIN LIBRARY



VIEW 1

LOOKING FROM HALL DOOR (G2) TOWARDS
NIGHTINGALE ROOM DOOR (G6)

CCTV

New camera to be direct replacement and connected to existing cabling.

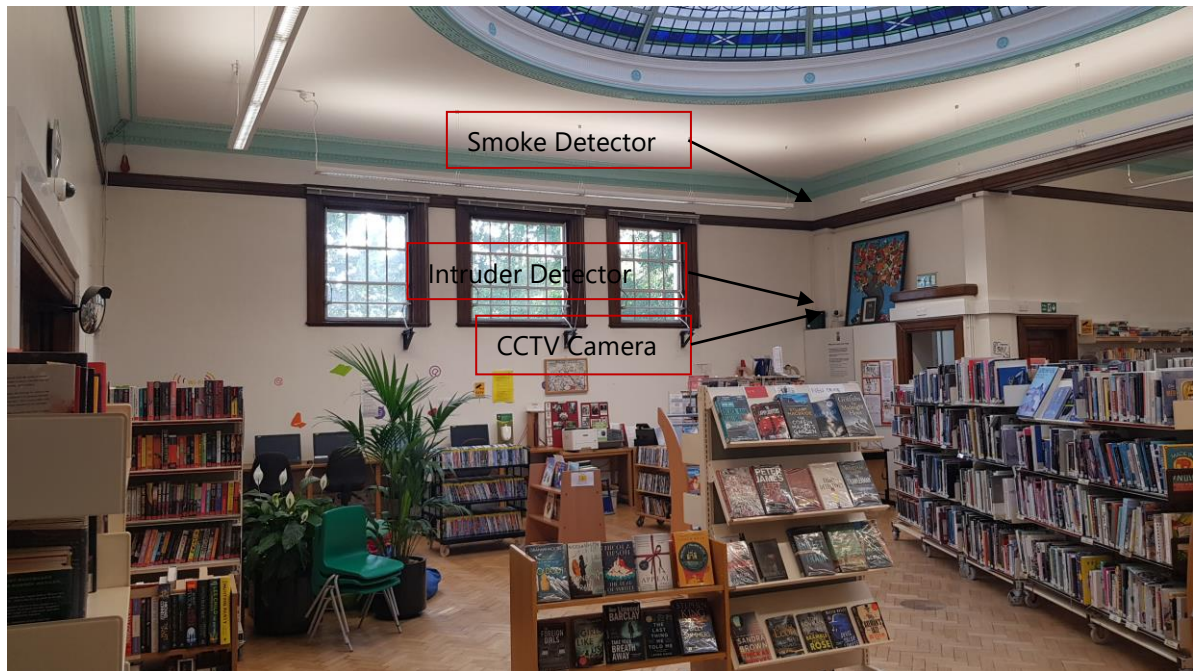
Fire Alarm

Proposed location for a new wireless smoke detector mounted onto a base sounder.

Existing fire alarm sounder, break glass unit (hidden behind bookshelf below mirror) and cabling to be removed.

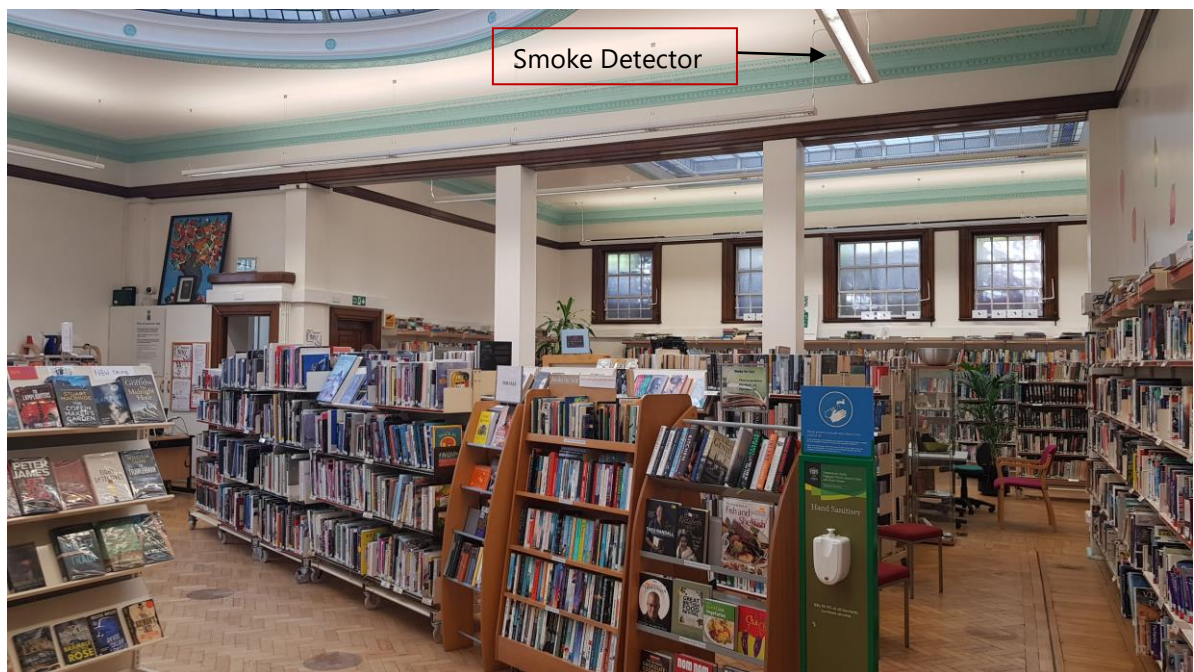
It is proposed to locate a new radio control cluster (RCC) and power supply unit in lieu of the existing fire alarm sounder.

Note:- Redundant holes within the wall will be filled and painted.



VIEW 2
LOOKING FROM HALL DOOR (G2) TOWARDS
LIBRARIAN DESK

CCTV	New camera is to be a direct replacement and connected to existing cabling.
Intruder Alarm	Proposed location for a new intruder detector.
Fire Alarm	Proposed location for a new wireless smoke detector mounted onto a base sounder and beacon.



VIEW 3
LOOKING FROM MAIN LIBRARY (G5) TOWARDS
STAFF DOOR (G4)

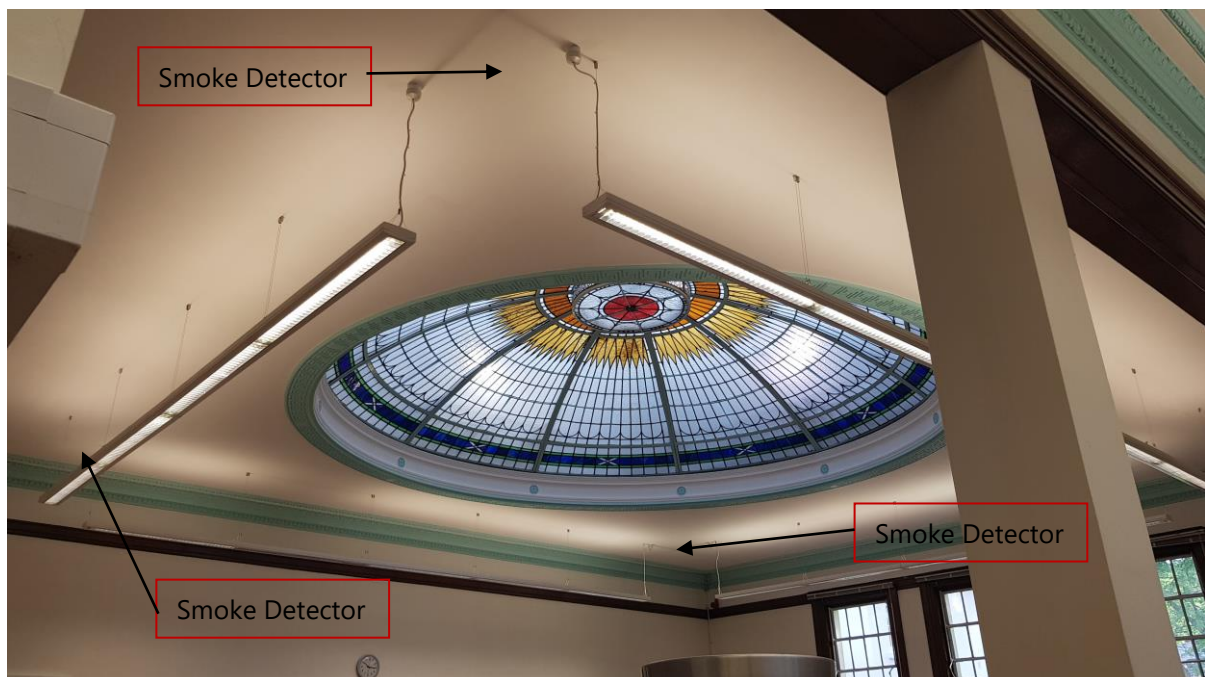
Fire Alarm	Proposed location for a new wireless smoke detector mounted onto a base sounder and beacon.
------------	---



VIEW 4
LOOKING FROM MAIN LIBRARY (G5) TOWARDS
HALL DOOR (G2)

Fire Alarm

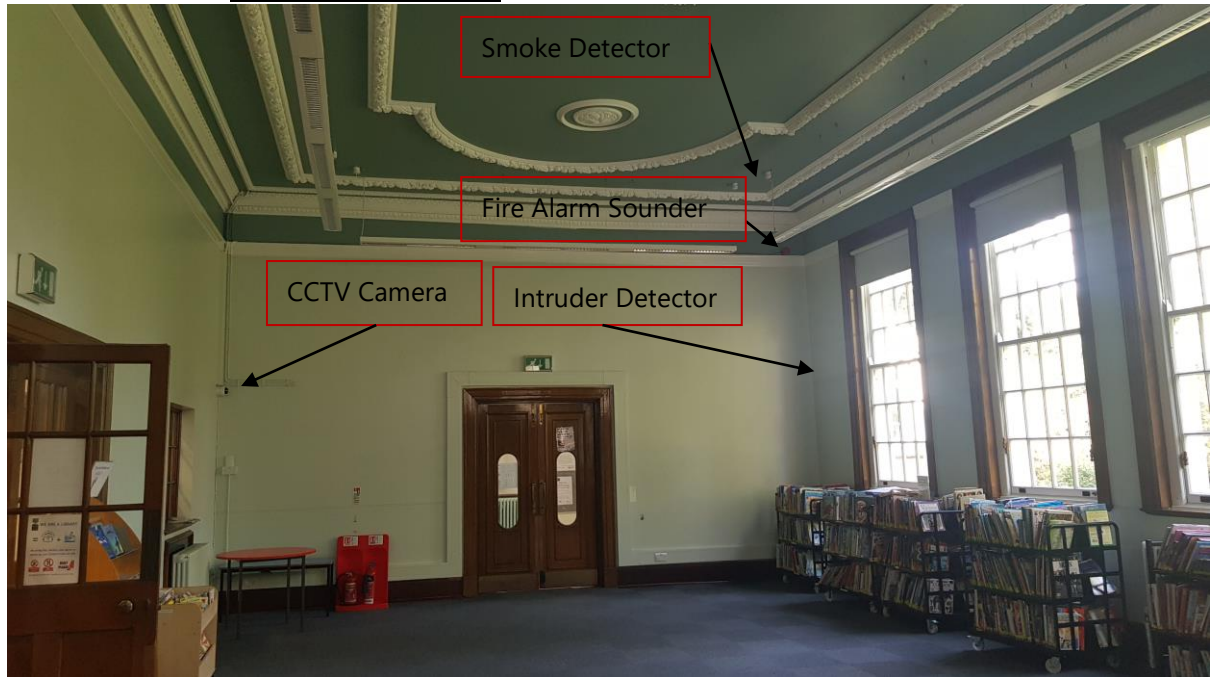
Proposed location for a new wireless smoke detector mounted onto a base sounder and beacon.



VIEW 5
LOOKING FROM UP MAIN LIBRARY (G5) FLOOR

Fire Alarm

Proposed locations for new wireless smoke detectors mounted in alignment with suspended luminaires.

VIEW 1

LOOKING TOWARDS HALL DOOR (G2)

CCTV

Intruder Alarm

Fire Alarm

New camera to be a direct replacement and connected to existing cabling.

Proposed location for a new intruder detector.

Proposed location for a new wireless smoke detector mounted onto a base sounder and beacon.

Existing fire alarm sounder and cabling to be removed.

Existing fire alarm cabling (adjacent to CCTV Camera) that is derived from the Fire Alarm Panel (other side of wall in Hall (G2)) is to be removed.

Note:- Redundant holes within the wall will be filled and painted.VIEW 2

Fire Alarm

Proposed location for a new wireless smoke detector mounted onto a base sounder and beacon.

G7

REAR DOOR HALLWAY



Intruder Detector

Intruder Alarm Keypad

Manual Break Glass Unit

VIEW 1

LOOKING UP FROM INTERNAL STAFF DOOR TOWARDS REAR DOOR

Intruder Alarm

Proposed location for a new intruder detector.

Proposed location for a new keypad and mounted in-line with fire alarm manual break glass unit.

Fire Alarm

Existing manual break glass is to be replaced with a wireless type.

It is proposed to install a new wireless smoke detector mounted onto a base sounder, located onto the ceiling within this area.



CCTV Camera

VIEW 2

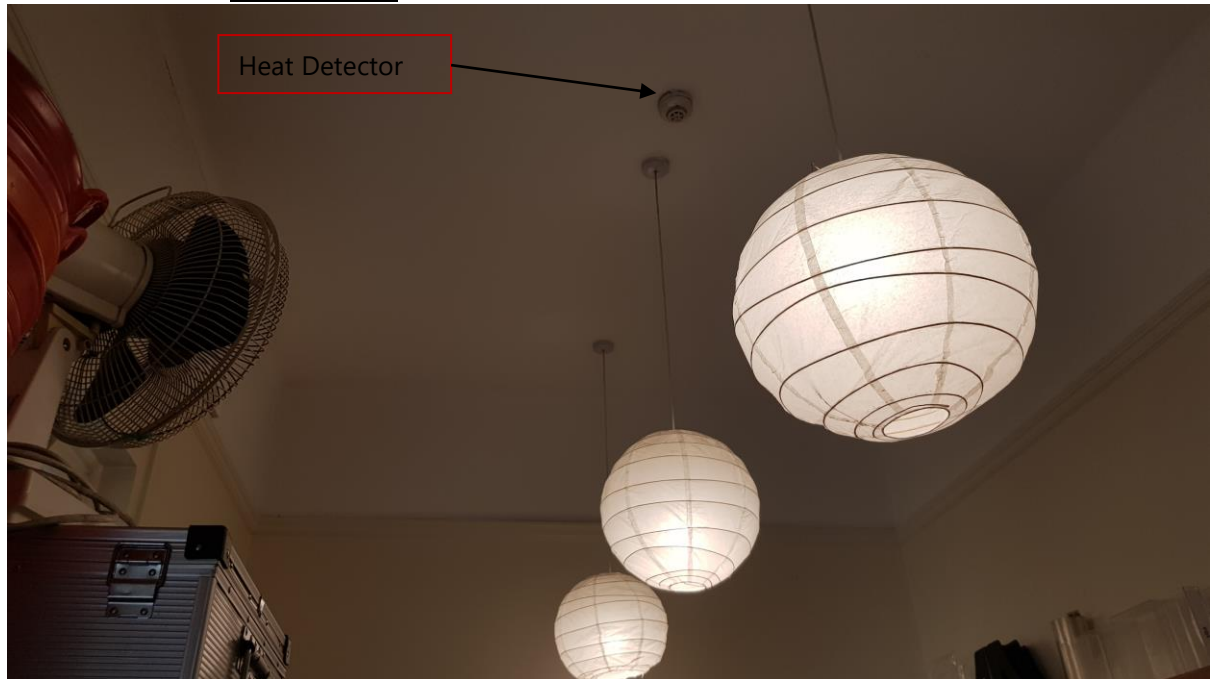
FROM REAR DOOR LOOKING DOWN HALL TOWARDS INTERNAL DOOR (G5)

CCTV

New camera to be a direct replacement and connected to existing cabling.

G8

STAFF ROOM



VIEW 1

Fire Alarm

Existing heat detector to be replaced with a wireless type mounted onto a base sounder and beacon.



VIEW 2

CCTV

Existing fire alarm sounder and cabling to be removed.

Note:- Redundant holes within the wall will be filled and painted.

Intruder Alarm

It is proposed to install a new detector within this area.

G10

STAFF WC



Electrical Service Cupboard

Fire Alarm

It is proposed to install a new wireless smoke detector within the electrical mains cupboard.

Note:- The District Network Operators (DNO) incoming electrical service head and the libraries distribution board are housed within this cupboard.

G11

STORE

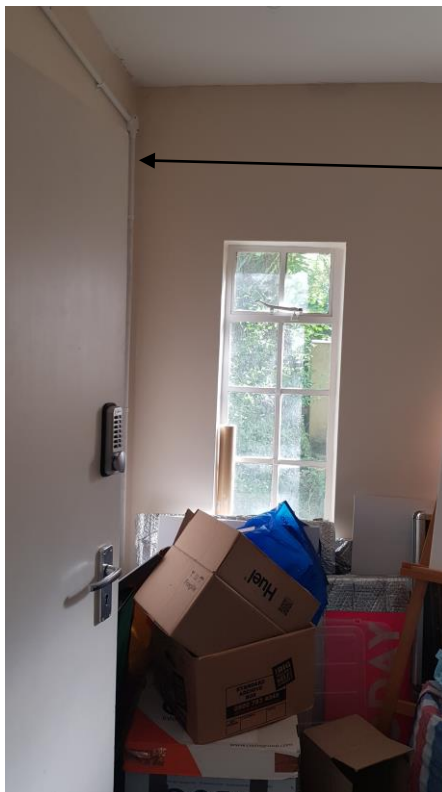


Smoke Detector

VIEW 1

Fire Alarm

It is proposed to install a new wireless smoke detector mounted onto a base sounder and located onto the ceiling within this area.



Intruder Detector

VIEW 2

Intruder Alarm

Proposed location for a new intruder detector.

EXTERIOR – FRONT ELEVATION



Intruder Alarm Existing external sander to be replaced and relocated.
New location to be adjacent to rear staff door – See drawing COL/KL/68/11.
Note:- Redundant holes within the wall will be filled and painted.

ROOF VOID

Fire Alarm New wireless smoke detection is to be installed.