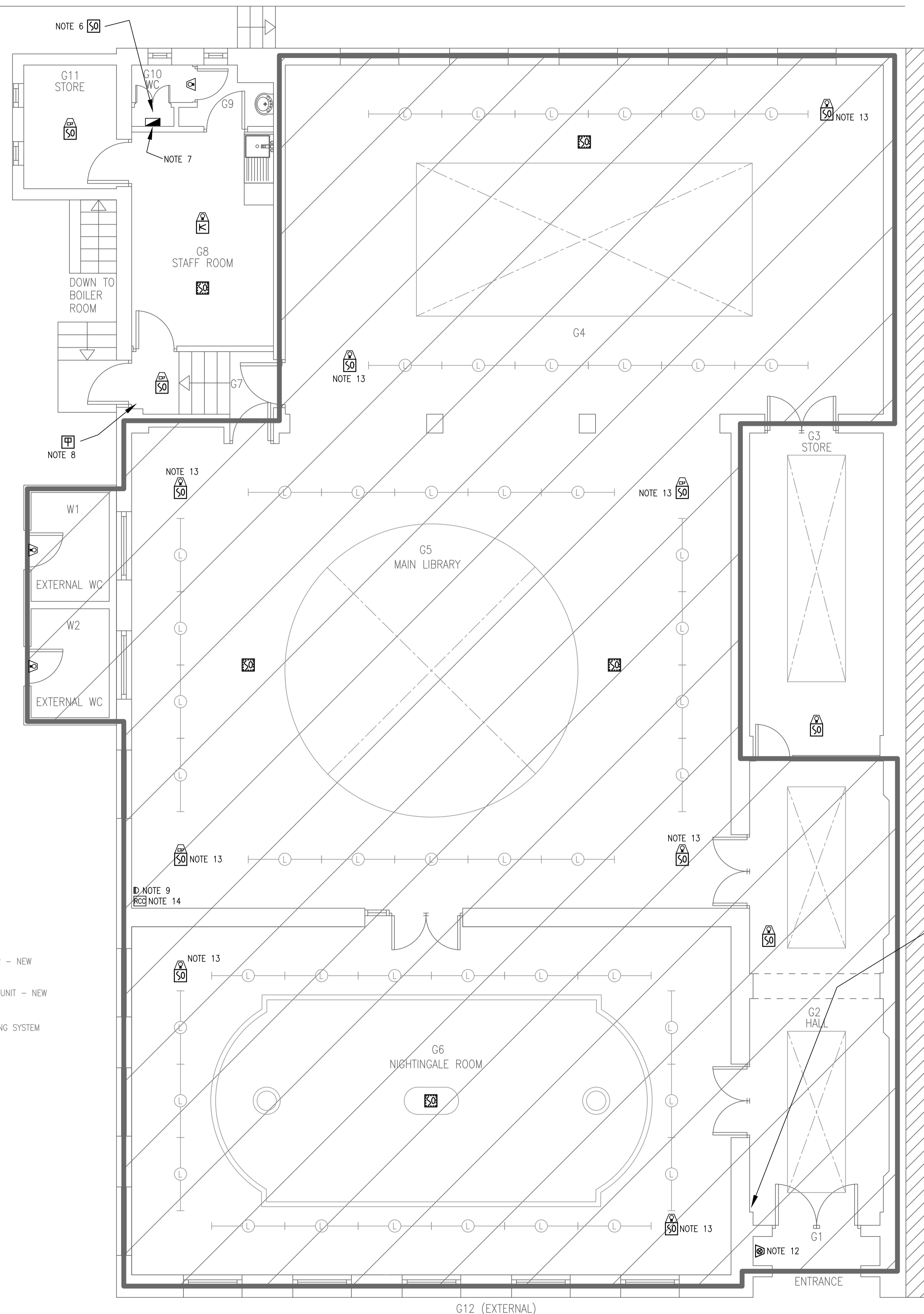
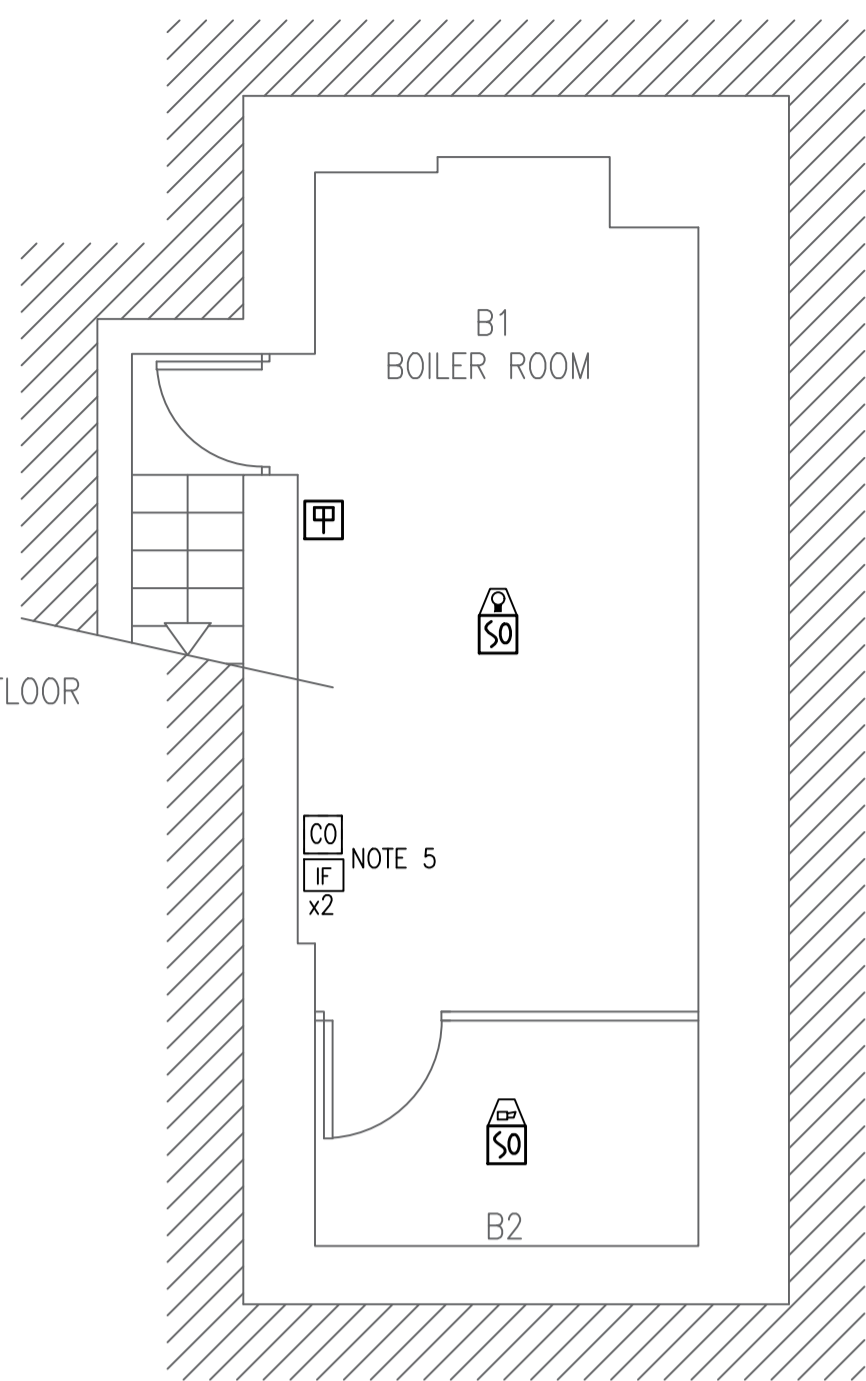


BASEMENT



- notes
- THIS DRAWING IS TO BE READ IN CONJUNCTION WITH THE CONTRACT SPECIFICATION AND ALL OTHER CONTRACT DRAWINGS.
 - ALL SERVICES ROUTES ARE APPROXIMATE. THE CONTRACTOR SHALL BE RESPONSIBLE FOR DETERMINING THE EXACT ROUTES AND POSITIONS OF ALL INSTALLED SERVICES AND EQUIPMENT.
 - THE EXACT POSITION OF ALL SERVICES AND EQUIPMENT SHALL BE AGREED ON SITE WITH THE ENGINEER.
 - THE CONTRACTOR SHALL BE RESPONSIBLE FOR FULLY CO-ORDINATING ALL SERVICES INSTALLED BY HIM WITH THE BUILDING FABRIC AND ANY SERVICES TO BE INSTALLED BY OTHER.
 - INSTALLATION OF TWO INTERFACES TO:-
i. SHUT-OFF GAS SOLENOID IN THE EVENT OF A FIRE SIGNAL.
ii. CONNECT THE CARBON MONOXIDE DETECTOR TO THE FIRE ALARM SYSTEM.
 - SMOKE DETECTOR SUITABLY LOCATED WITHIN THE ELECTRICAL CUPBOARD.
 - LOCATION OF DNO SERVICE HEAD & METER ALONG WITH THE LIBRARIES DISTRIBUTION BOARD.
 - MANUAL BREAK GLASS TO BE SUITABLY LOCATED LOCAL TO THE DOOR.
 - THE CONTRACTOR SHALL INSTALL A NON-FUSED CONNECTION UNIT TO SUPPLY THE RADIO CONTROL CLUSTER.

THE UTILISED CABLE IS TO BE FIRE-RATED AND THE CIRCUIT DERIVED FROM THE LIBRARIES DISTRIBUTION BOARD.
 - THE CONTRACTOR SHALL INSTALL A NON-FUSED CONNECTION UNIT TO SUPPLY THE RADIO HUB.

THE UTILISED CABLE IS TO BE FIRE-RATED AND THE CIRCUIT DERIVED FROM THE LIBRARIES DISTRIBUTION BOARD.
- notes (cont.d)
- THE CONTRACTOR SHALL INSTALL A PROPRIETARY FIRE ALARM ISOLATOR TO SUPPLY THE MAIN PANEL.

THE UTILISED CABLE IS TO BE FIRE-RATED AND THE CIRCUIT DERIVED FROM THE LIBRARIES DISTRIBUTION BOARD.
 - WIRELESS EXTERNAL BEACON TO HAVE A SUITABLE IP RATING FOR THE PROPOSED INSTALLATION LOCATION.
 - DETECTORS TO BE INSTALLED IN-LINE WITH THE EXISTING SUSPENDED MODULAR LIGHTING.
 - THE RADIO CONTROL CLUSTER IS TO BE MOUNTED ABOVE THE CORNICE REPLACING THE EXISTING SOUNDER AND CABLING.
 - ALL EQUIPMENT AND ACCESSORIES TO BE HOUSED WITHIN A WHITE PAINTED (COLOUR TO MATCH WALL) TIMBER CUPBOARD (APPROX. 550MM DEEP) WITH 'SNAP SHUT' HINGES AND OPENED BY FIXED WHITE PAINTED D-HANDLE. A SUITABLE SIZED APERTURE IS TO BE CUT WITHIN THE CUPBOARD FRONT TO ALLOW THE FIRE ALARM PANELS DISPLAY TO BE READ.
 - WHERE PRACTICAL AND IT DOES NOT IMPAIR ITS OPERATION, ALL NEW & EXISTING DEVICES/EQUIPMENT (INCLUDING THE LIGHTINGS 'KLIK' CEILING ROSES) ARE TO BE PAINTED (EVENLY & WITHOUT RUNS) SO AS TO MATCH THE SURROUNDING WALL/CEILING SURFACE TO WHICH IT IS FIXED.
 - ALL REDUNDANT CABLING IS TO BE REMOVED AND ANY SURFACES MADE GOOD.

LEGEND

- SMOKE DETECTOR WITH BASE SOUNDER - ALL NEW
- SMOKE DETECTOR WITH BASE SOUNDER & BEACON - ALL NEW
- SMOKE DETECTOR (IN ROOF VOID) - ALL NEW
- HEAT DETECTOR WITH BASE SOUNDER & BEACON - ALL NEW
- WEATHERPROOF WALL MOUNTED BEACON - NEW
- SOUNDER & BEACON - NEW
- MANUAL BREAK GLASS UNIT - ALL REPLACED IN SAME LOCATION
- MAIN FIRE ALARM PANEL -NEW
- CARBON MONOXIDE DETECTOR (IN BOILER ROOM) - NEW
- INTERFACE UNIT (IN BOILER ROOM) - NEW
- RADIO HUB - NEW
- RADIO CONTROL CLUSTER - NEW
- FIRE ALARM DP KEYSWITCH ISOLATOR - NEW
- NON-SWITCHED FUSED CONNECTION UNIT - NEW
- SUSPENDED MODULAR LINEAR LIGHTING SYSTEM (EXISTING RETAINED)
- ROOFLIGHT
- VISITOR ACCESSIBLE

ACCESSORIES TO BE MOUNTED WITHIN AN ENCLOSURE ON INSIDE WALL (NOTE 15).

NEW CABLING IS TO BE CONTAINED WITHIN THE EXISTING PLASTIC TRUNKING AT LOW-LEVEL WITHIN THE NIGHTINGALE ROOM AND THEN RISE-UP BELOW THE FIRE ALARM PANEL WITHIN THE HALL (G2).

GROUND FLOOR

Notes
Do not scale. All dimensions to be checked on site. Errors to be reported to supervising officer.

Rev	Description	Drawn	Date
C	SYMBOLS REDUCED IN SIZE. DETAIL ADDED REGARDING NEW FIRE ALARM PANEL CABLING AND NOTES 16 & 17 ADDED.	S.M.C.	17.07.23
B	ADDS TO LEGEND (LUMINAIRE DESCRIPTION AMENDED & CARBON MONOXIDE DETECTOR ADDED). NOTES 9 & 15 AND ROOM G11 DETAIL INCORPORATING ARCHITECTS COMMENTS.	S.M.C.	15.12.22
A	INCORPORATING ARCHITECTS COMMENTS.	S.M.C.	09.11.22

P.G. Wilkinson BSc MSc MRICS
City Surveyor

CITY SURVEYOR'S DEPARTMENT
Corporate Property Group
Plans & Research Section

Project : KEATS COMM. LIBRARY 10 KEATS GROVE LONDON NW3 2RR	
Drawing : BASEMENT & GRD FLR PROPOSED FIRE ALARM SYSTEM LAYOUT	
Scale at A1 : 1:50	Drawn by : S.M.C.
Des : S.M.C.	App :
Date : JUNE 22	Pro code UPRN
Drawing No: COL/KL/68/10	
Revision	C