

1. Chilled Pipework

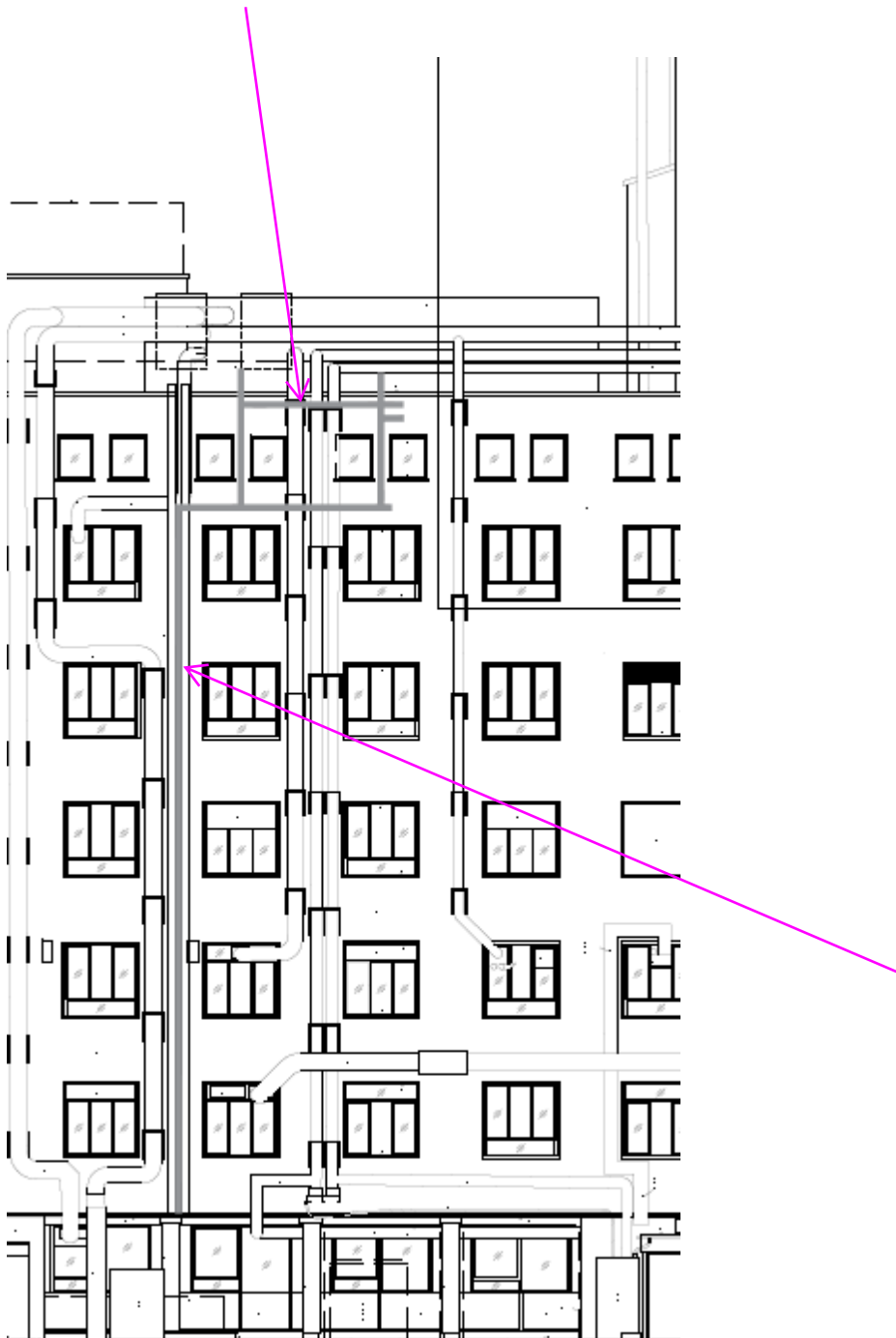
Originally consented planning drawing



Photo of rear elevation showing area where pipework had to deviate from consented drawing



New pipework shown in Grey on updated planning drawing



2. External Grilles

Existing Grilles – Pre Works



New Grilles in Situ



New Grilles as they appear in Elevation



Grille shown is to room 422. The same grille type is fitted to labs 416 and 417.

3. Justification for Changes



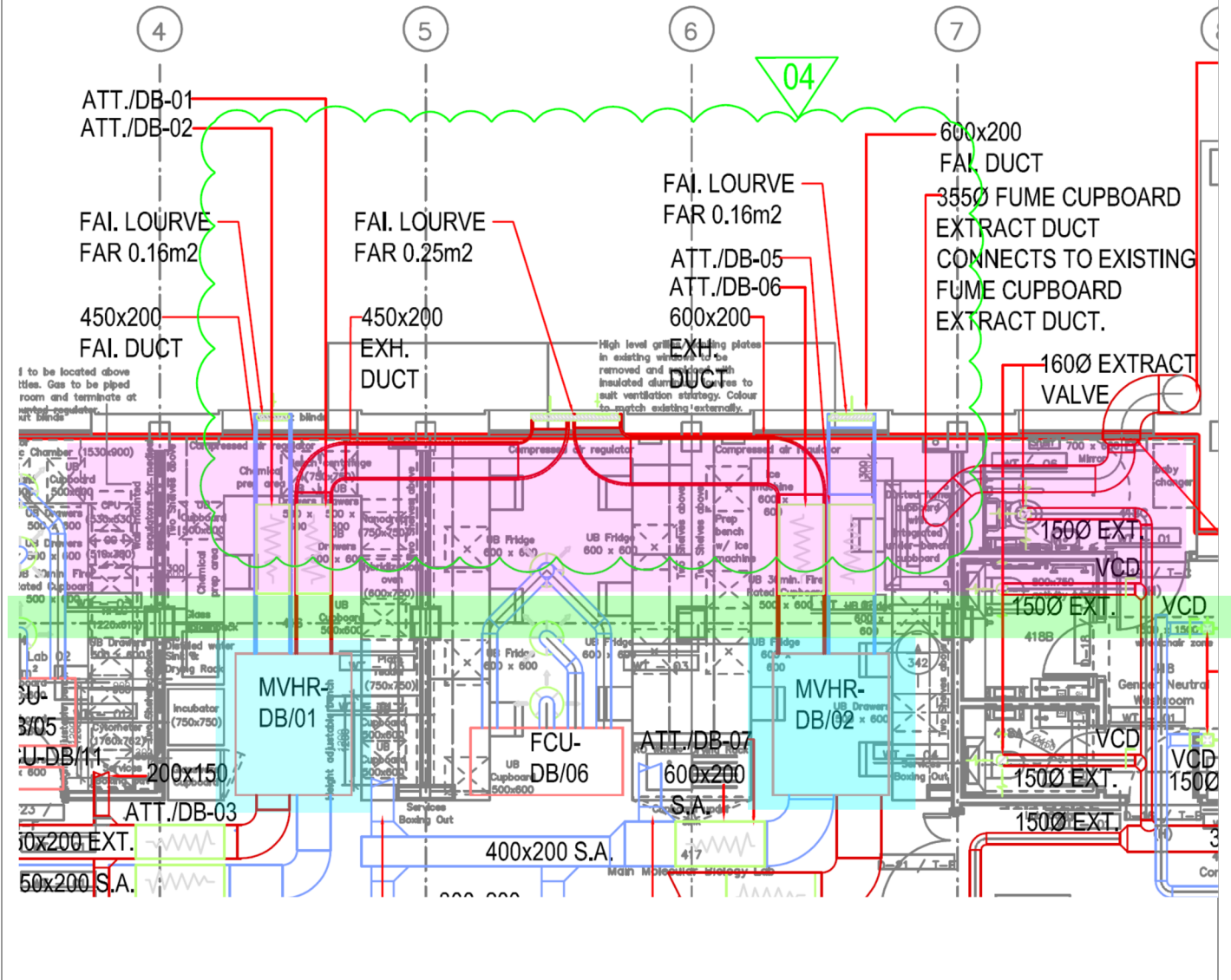
UCL - CLOE Main Works – Quest NMA Information – External Grilles

Justification for New Grilles

CLOE lab spaces – Labs 416 and 417 require MVHR as per design. For correct attenuation and to achieve desired aesthetic internally

Structural beam (highlighted green) that runs through the middle of the these labs dictates the positioning of the MVHRs to ceiling slab and duct runs are then dictated by the amount of space in ceiling highlighted in pink below:

Tender design – new arilles/louvres to lab spaces shown in locations as per installation.



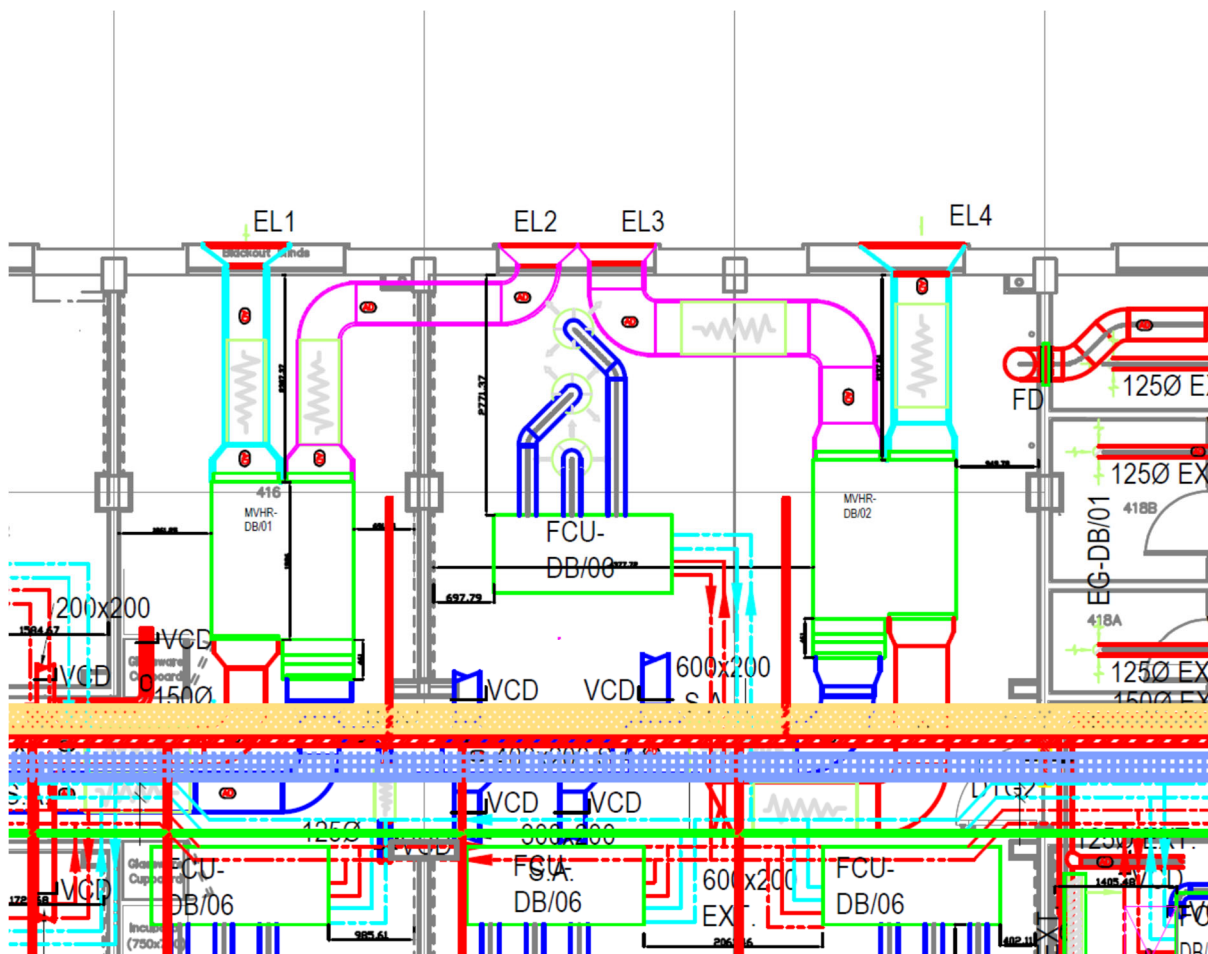
Justification for New Grilles – As Installed

CLOE lab spaces – For correct attenuation to MVHRs, and to achieve desired aesthetic internally, we are dictated by

- A) Design requirements
- B) Spaces internally within which duct runs can be installed

As installed – new grilles/louvres to lab spaces shown in below locations - EL1, EL2, EL3, EL4

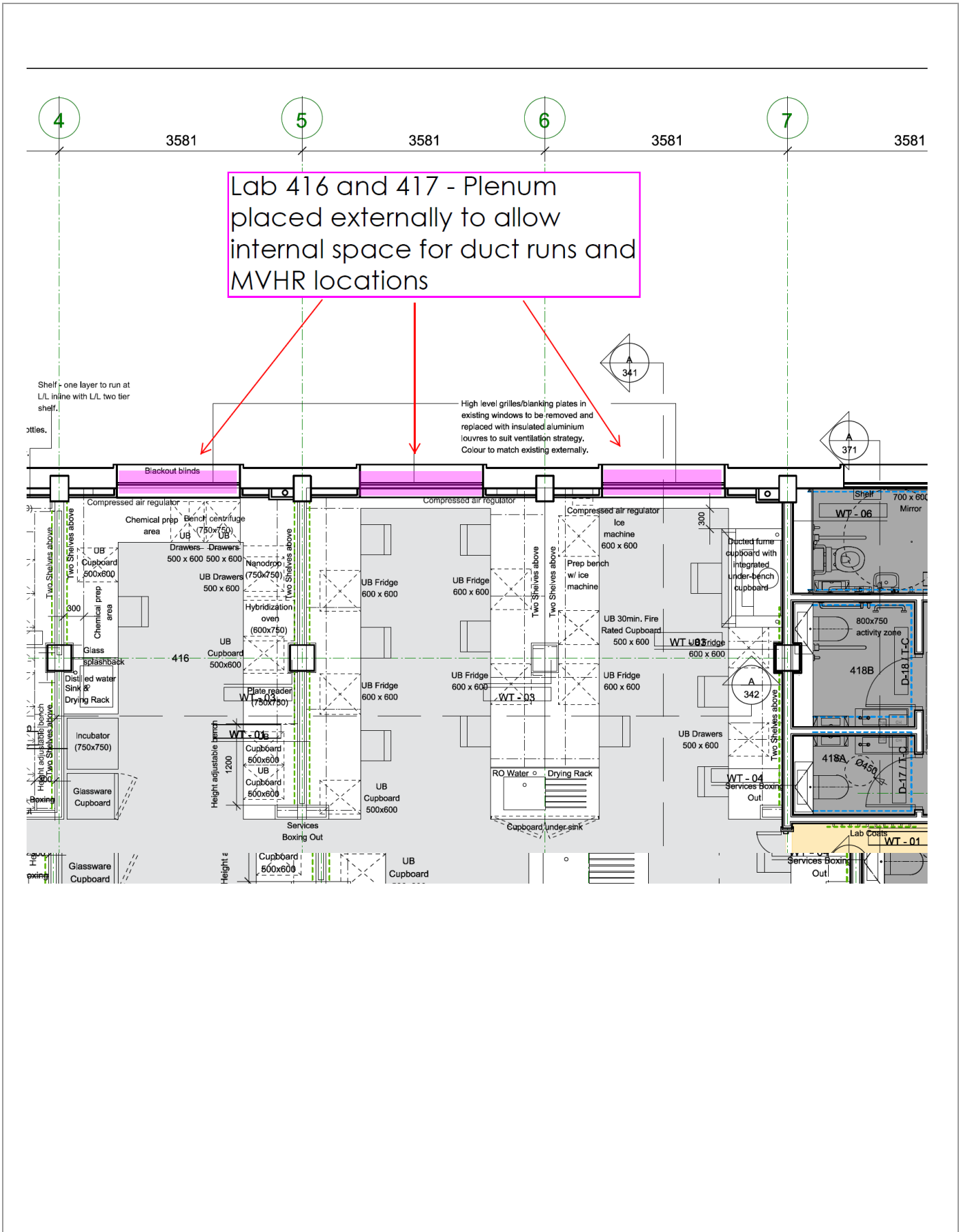
Plenum for grille has had to be installed externally in order to achieve the internal design as per drawing and photos below. Hence grille is on outer face of window.



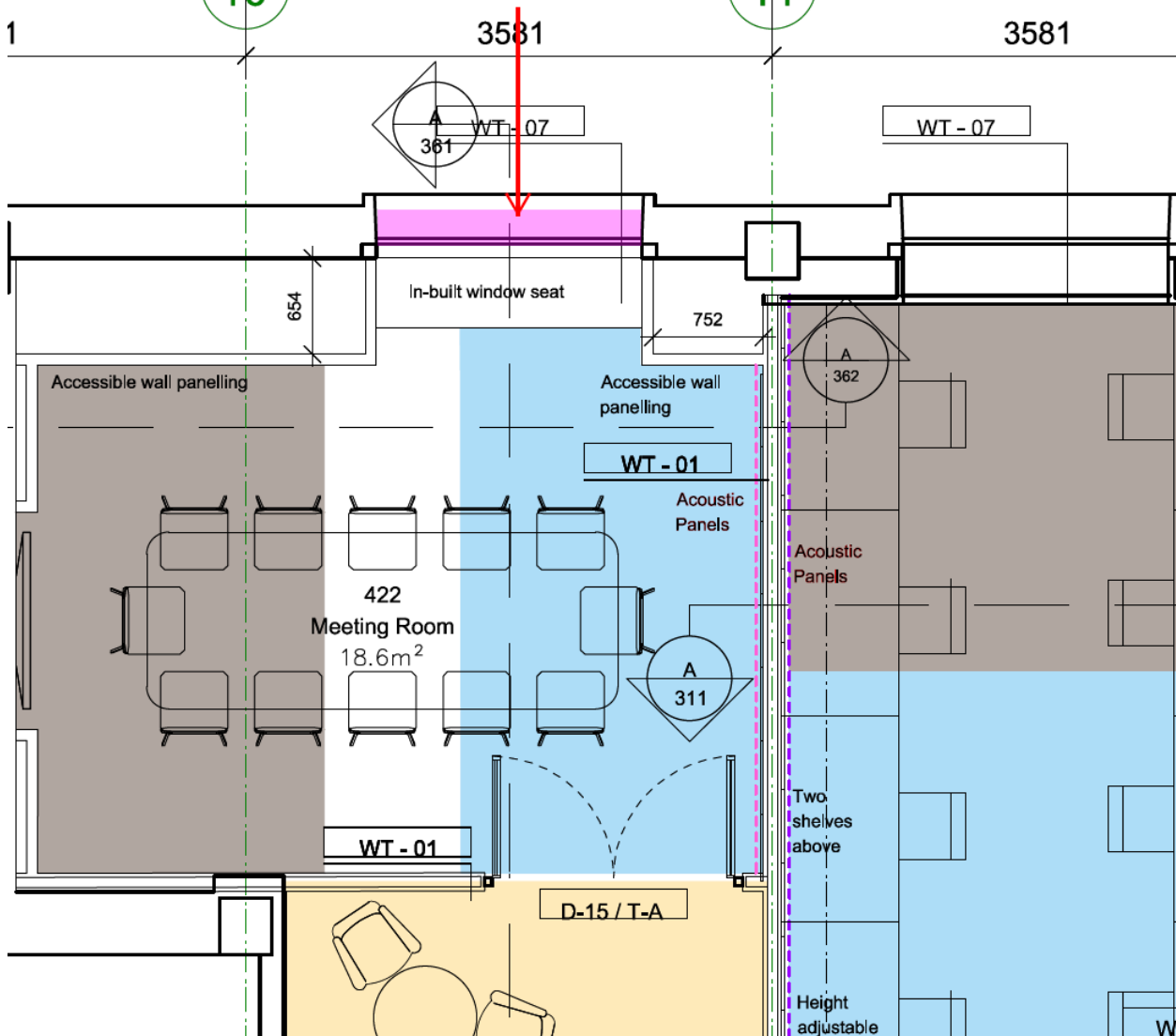
Lab 416 - Plenum has to be installed through top of existing window.





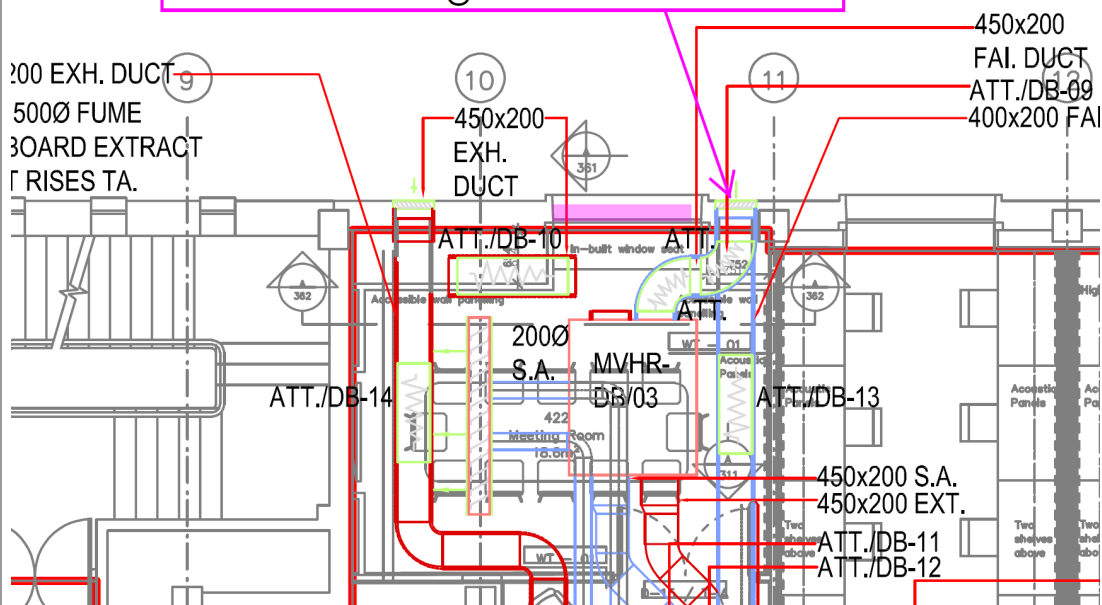


Meeting Room 422 - plenum is installed externally to allow adequate space for duct runs and mechanical plant internally

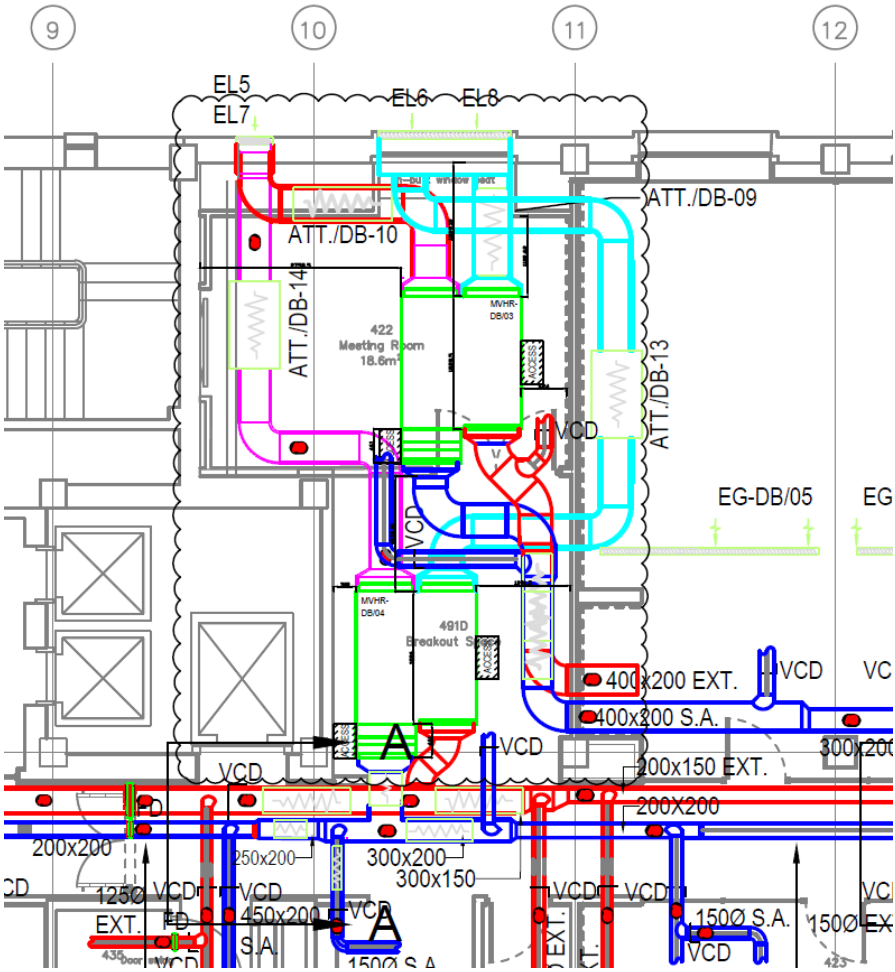


Meeting Room 422 - Tender/ S3 design

Tender design shows grille in external face of brickwork, however internal space isn't adequate for attenuation. External space between window and structural column is also insufficient for grille in this location



Room 422 - grille EL6 and EL8 are connected onto plenum which is installed externally, allowing for sufficient room internally for ductwork and required attenuation



UCL - CLOE Main Works – Quest NMA Information – CHW Riser

Chilled Riser Pipework – High level 6th floor



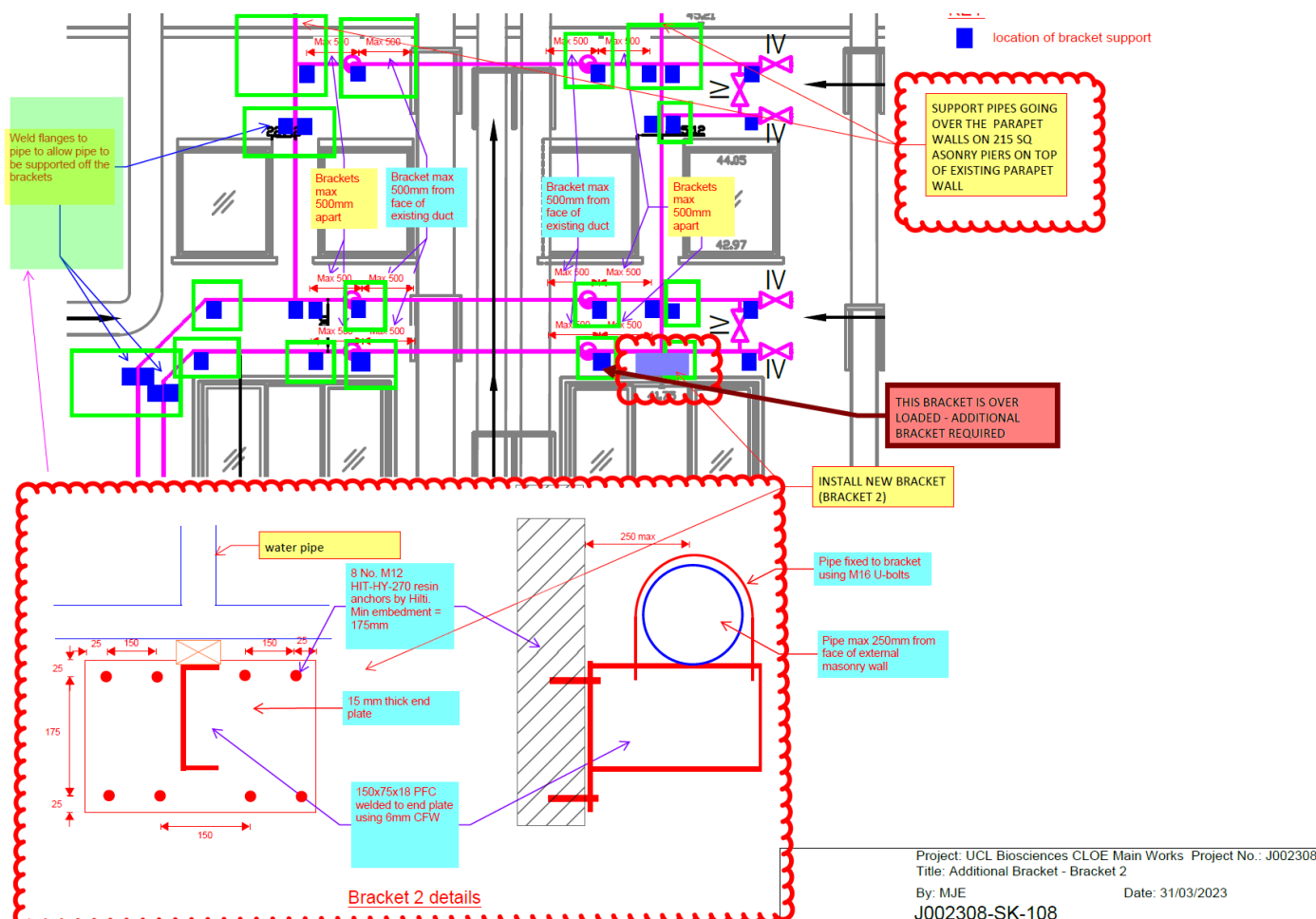
Chilled water pipework shown at 6th floor level supported off new brackets as per structural engineer's specification. Pipework was required to be fed around existing ductwork. Any deviation from consented route is to allow for adequate bracketry and to avoid clashing with existing services

Chilled Riser Pipework – High level 5th floor



Chilled water pipework shown supported off new brackets as per structural engineer's specification. Pipework was required to be fed around existing ductwork.

Structural Engineer's Specification Sketch SK08



Structural Engineer's sketch detailing the bracketry at 5th and 6th floor level required to chilled water pipework