

CANOPY PROPOSAL

ESCP

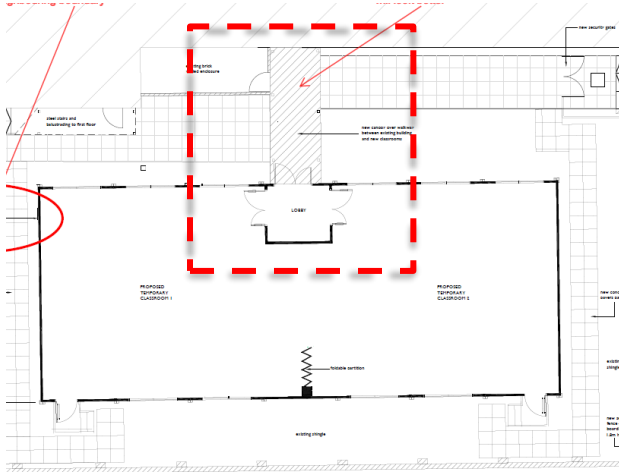
V1// 03.10.23 – For Customer Sign Off

V2// 05.10.23- New block plan and canopy layout for customer sign off

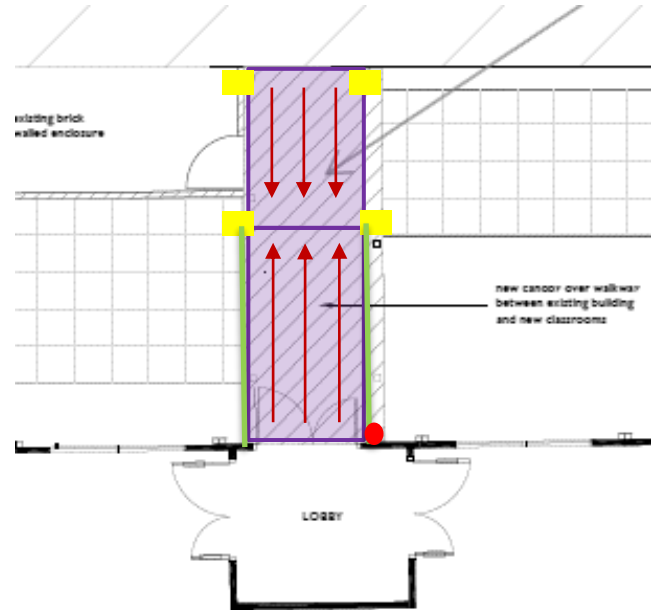
V3// 16.10.23- Smaller Canopy as per Architect instruction

CANOPY FOOTPRINT

SITE PLAN- Proposed Block plan ESPC – REV C 7x UK093



CANOPY LOCATION

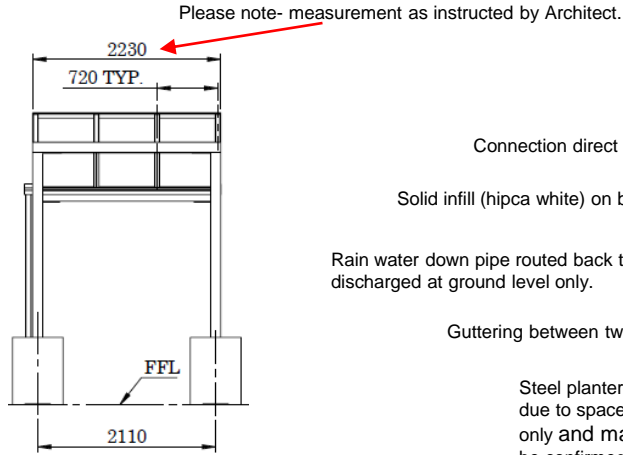


- Direction of canopy pitch
- ▭ Canopy footprint
- Planters – exact position and size tbc on survey
- Rainwater pipe to ground level run off
- Solid infill

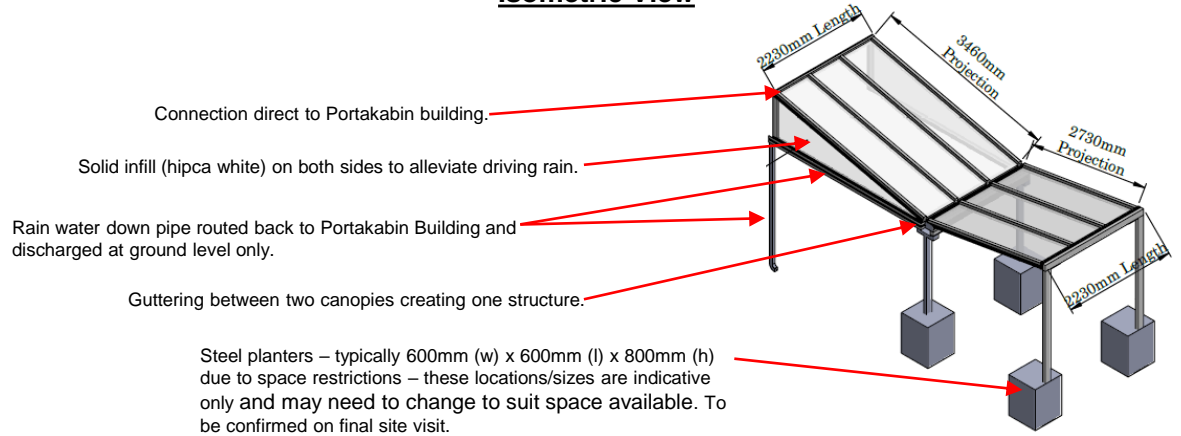
Canopy Sizes on page 3 of document

CANOPY SPECIFICATIONS

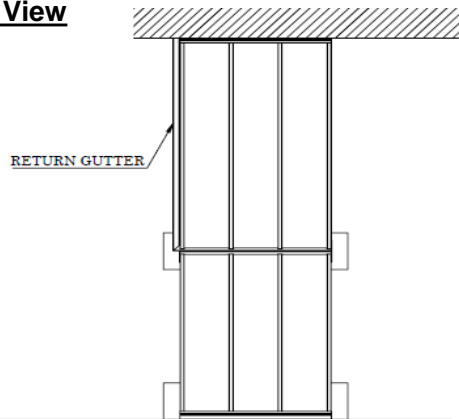
Front View



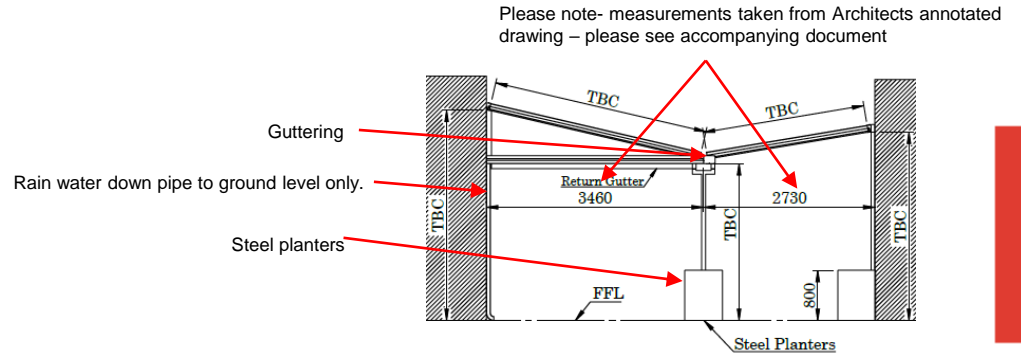
Isometric View



Top View

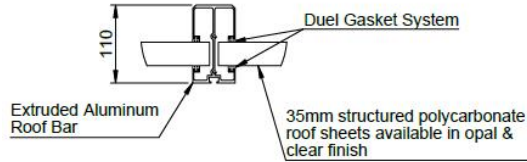


Side View



CANOPY SPECIFICATIONS – OPTION A – 13.2M (L) X 2M (P)

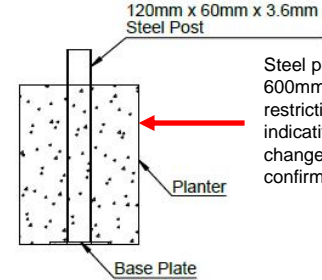
Roof Bar & Sheet Section



Eaves Beam Roof Bar & Post Section

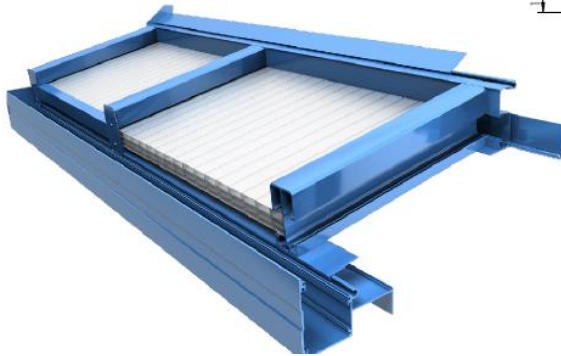
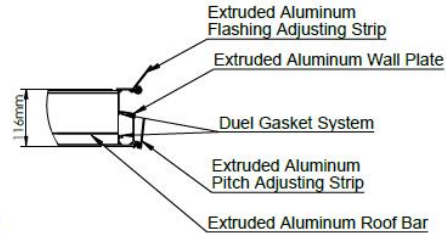


Base & Post Connection Information



Steel planters – typically 600mm (w) x 600mm (l) x 800mm (h) due to space restrictions – these locations/sizes are indicative only and may need to change to suit space available. To be confirmed on final site visit.

Wall Plate & Roof Bar Section



CANOPY SPECIFICATIONS

- **Supply, delivery, installation and subsequent removal of a wall-mounted lean-to canopy with front posts**
- **Size:** 2.23m (Length) x 2.73m (Projection) monopitch canopy, connected to a 2.23m (length) x 3.46m (Projection) monopitch canopy.
- **Framework:** Aluminium frame powder coated hipica white.
- **Solid Aluminium infills:** on both sides of canopy at points indicated on drawings, to alleviate driving rain. powder coated hipica white.
- **Guttering & Downpipes:** Integral guttering with rainwater pipes to be returned to Portakabin building with down pipe to ground level run-off only- positions indicated on drawings. We will confirm if we are able to discharge into existing exposed drainage after site survey once buildings are in situ.
- **Polycarbonate roof panels:** Polycarbonate roof panels: “B” rated non-fragile ACR[M]001:2014, high UV protection and designed to meet fire rating standards BS 476/7 and EN13501 B-S1 d0 – Opal Finish.
- **Foundations:** 5nr Planters powder coated Hipica White, filled with concrete to weigh down the canopy structure, the top is finished with decorative white pebbles. Typically 600mm (w) x 600mm (l) x 800mm (h) due to space restrictions – these locations/sizes are indicative only and may need to change to suit space available. To be confirmed on final site visit.
- PLEASE NOTE- WHERE THE GROUND SLOPES, THE PLANTER WILL FOLLOW THE GROUND SLOPE, THE POSTS WILL REMAIN PERFECTLY VERTICAL.
- **Structural Calculations:** Designed to meet standard wind and snow loadings. Site specific calculations available on request and recommended for areas exposed to extreme weather conditions
- **Guarantee:** Guaranteed for the Minimum Hire Period subject to good maintenance schedule

EXAMPLES

