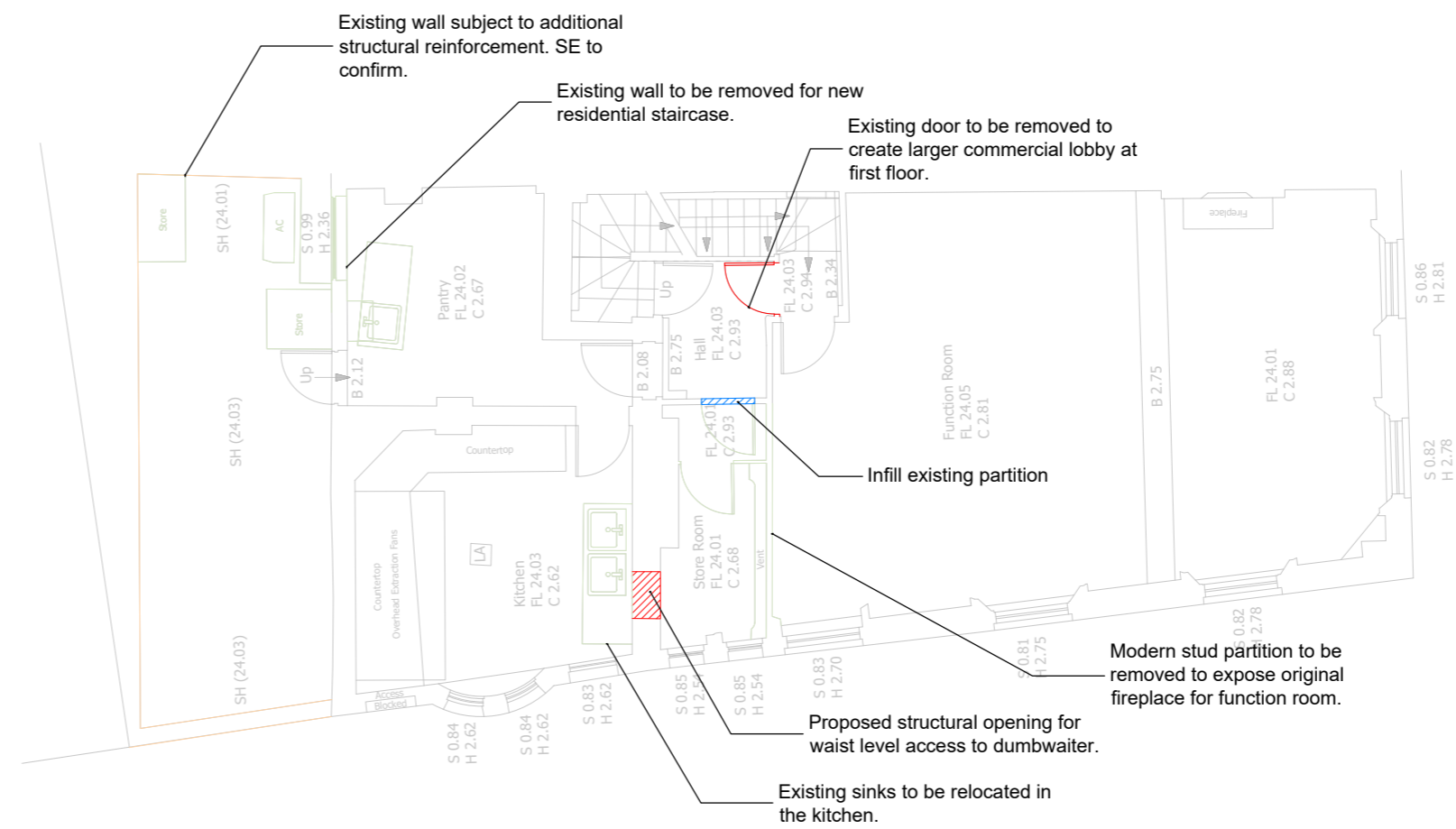


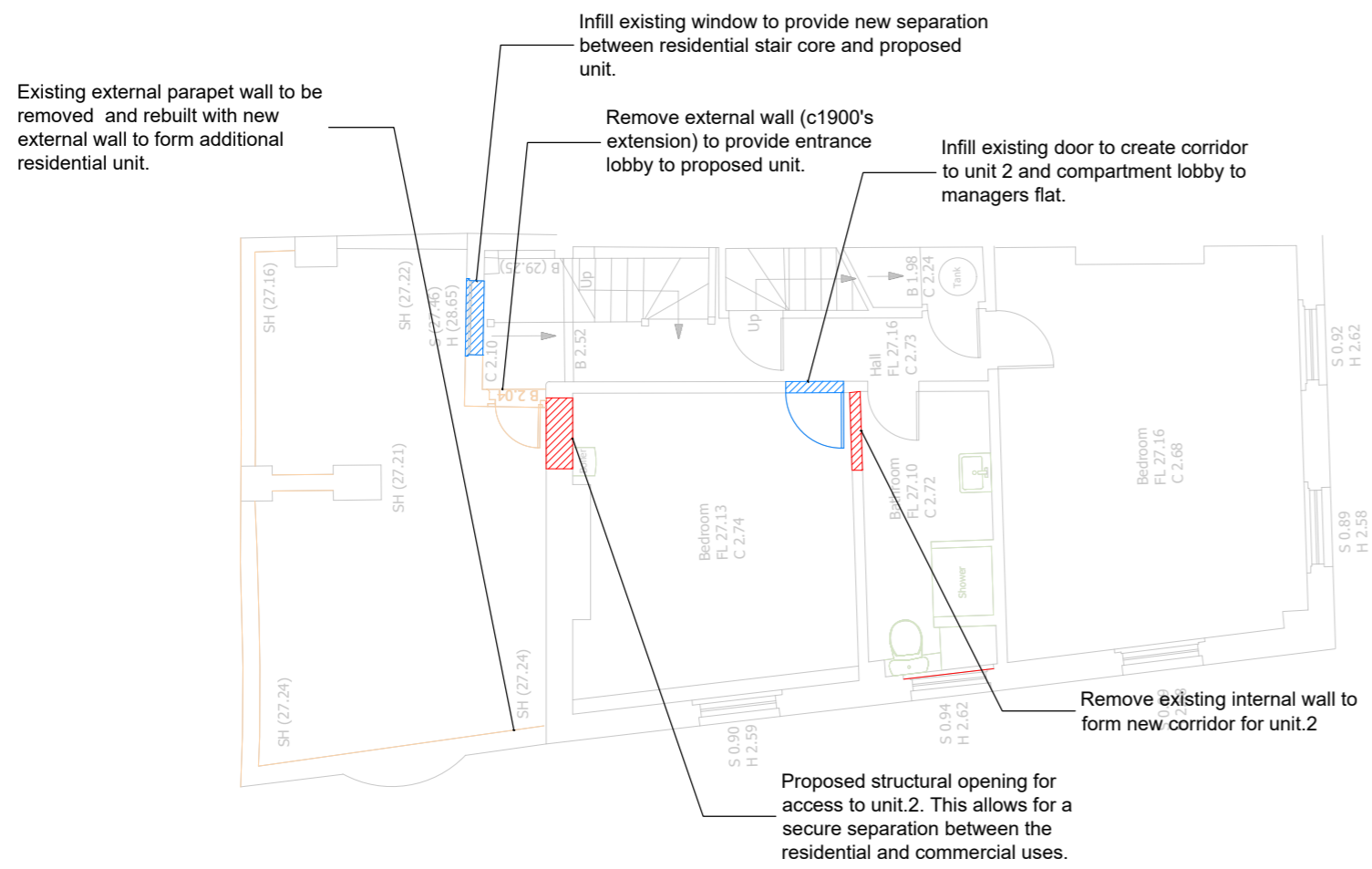
GENERAL NOTES:  
 1. THIS DRAWING IS TO BE READ IN CONJUNCTION WITH THE OTHER RELEVANT CONSULTANTS DRAWINGS.  
 2. ALL FINISHES ARE TO CONFORM TO THE CURRENT BUILDING REGULATIONS.  
 3. REFER TO A SEPARATE DOCUMENT FOR THE DESIGNER'S RISK ASSESSMENT.  
 4. ALL WORKS OR MATERIALS INDICATED ON THIS DRAWING ARE TO BE TO THE LATEST RELEVANT BRITISH STANDARDS AND CARRIED OUT IN ACCORDANCE WITH THE BRITISH STANDARDS CODES OF PRACTICE OR RECOGNIZED INSTITUTE OR TRADE ASSOCIATION RECOMMENDATIONS AND PUBLICATIONS.



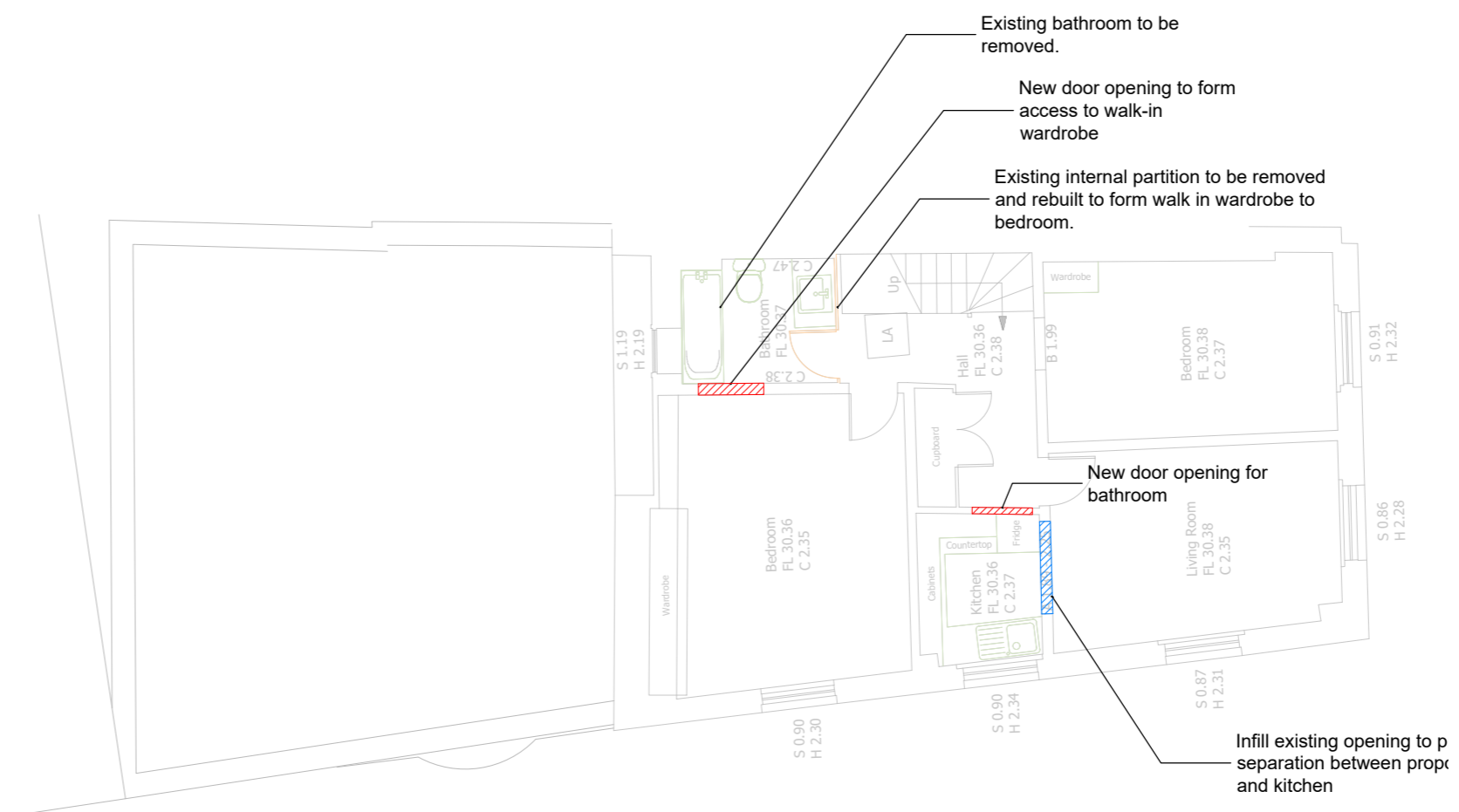
Ground Floor Plan



First Floor Plan



Second Floor Plan



Third Floor Plan

Key

- Low heritage impact
- Low / Medium heritage impact
- Areas effecting the original fabric
- Additional infill to the original fabric
- Existing underlay

Revision	Date	Description	Drawn	Checkd
P2	Oct 2023	Heritage impact comments to ground floor toilet partitions	CG	

**PLC ARCHITECTS**

Lansdowne House  
 25-26 Hampshire Terrace  
 Portsmouth PO1 2QF  
 Hampshire England

Tel: (023) 92 755 333  
 E-Mail: admin@plcarchitects.com  
 Web: www.plcarchitects.com

Client:

Project:  
**The Calthorpe Arms,  
 Bloomsbury  
 London**

Drawing Title:  
**Demolition Plans**

Drawn By	Date	Checked By	Date	Approved By	Date
CG	Sep'23				

Drawing No.	Revision	Scale
23.2407.105	P2	1:100 A2