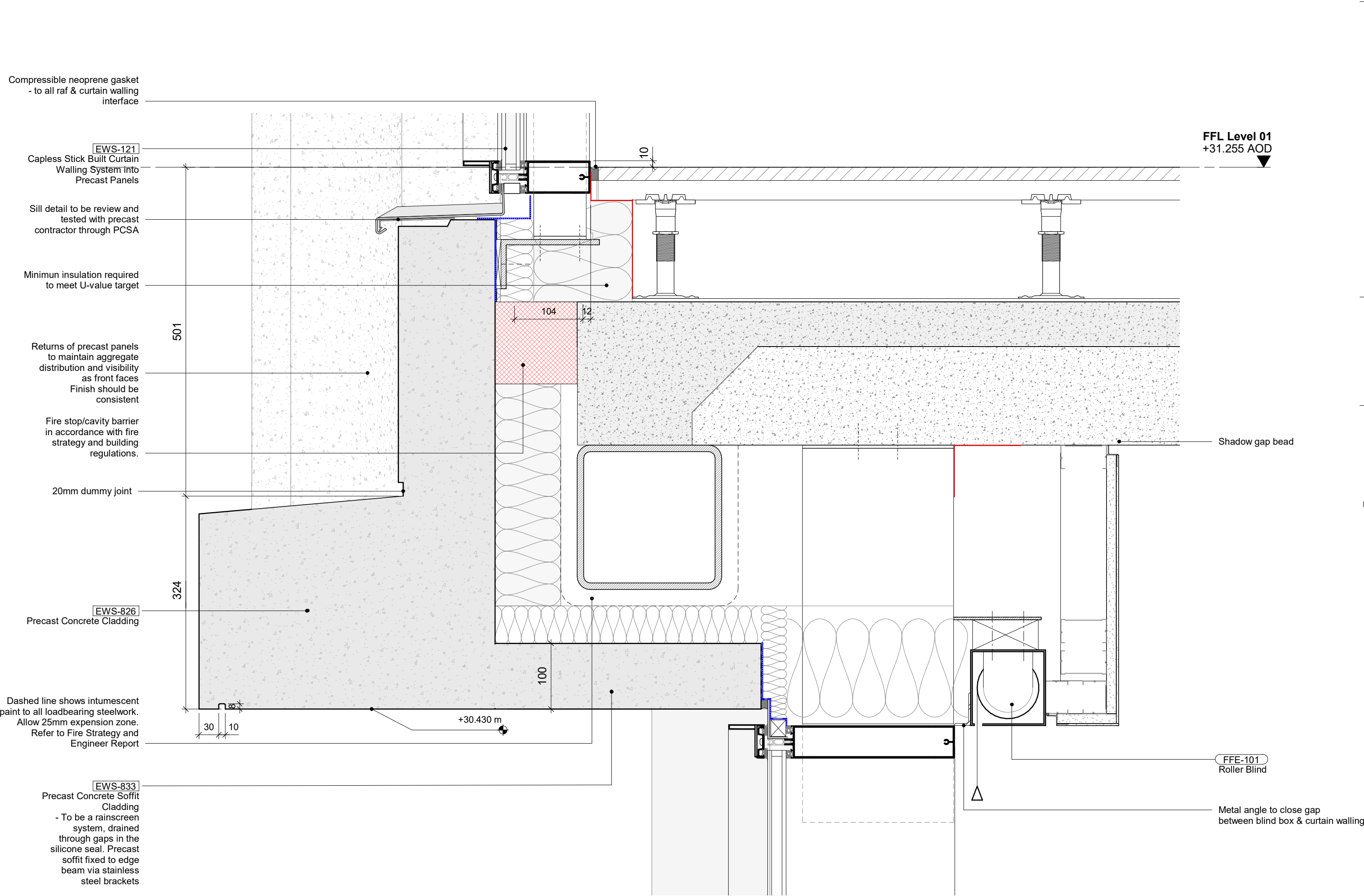
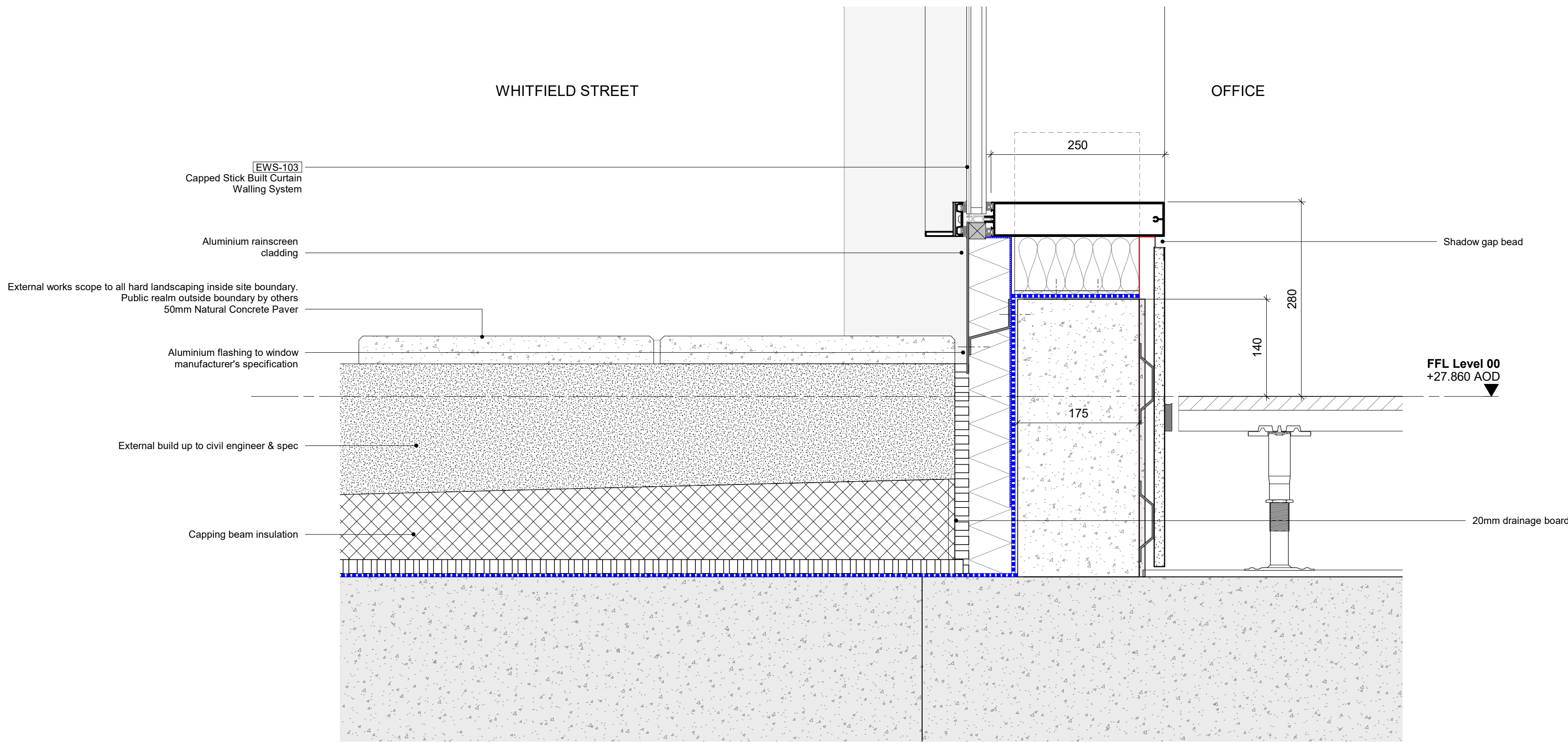


1 EWS-841 - Whitfield Street Ground Floor Precast Detail - Plan



2 EWS-841 and EWS 103 - Curtain Walling Base and Head Section



Do not scale from this drawing.
Check drawing on receipt and immediately report any discrepancies to the Architect.
Verify all dimensions and levels on site prior to construction.
The contents of this drawing are Piercy&Company copyright and shall not be re-used without their written permission.

Notes

SPECIFICATION TAGS

xxx-xxx Refer to FMDC Specification
xxx-xxx Refer to P&Co Specification

Refer to FMDC Specification for Precast, Curtain Walling and Window & Doors performance specification
For all facade pressings, sealant, flashings, associated elements etc, refer to FMDC specifications and the systems descriptions/relevant clauses for the external wall type. Refer to signage consultants information for external signage design intent
Refer to 21-100 - 21-104 scoping set for Facade Types
Refer to 04 series for CW Scoping Types
Refer to 22-100 for opening vent and Door Types
Refer to Door, Ironmongery and operation schedule for further information.
External door operation and power/automation requirement under review. Sub contractor input required. All door hardware is indicative pending input - manufacturer to advise on shoot bolt suitability

Waterproofing
Vapour Barrier

| | | |
|--------------|------------------------------------------|-------------|
| P03 09.10.23 | Planning Issue - Discharge of conditions | KC |
| P02 16.01.23 | Stage 4 - Employer's Requirements Issue | TM |
| P01 14.12.22 | Stage 4 - Issue for Tender | TM |
| Rev | Date | Description |

Piercy&Company

Piercy&Company
39 Plender Street
London NW1 0DT

T +44(0)20 74249611
info@piercyandco.com
www.piercyandco.com

Client
DERWENT LONDON

Project
THE NETWORK BUILDING
95-100 Tottenham Court Rd.

Drawing Title
EWS-841 Typical Details

Drawing Status
PLANNING

Date:
09.10.23

Drawing No.

13538-PCO-XX-00-DR-A-21-622

Drawing: MZ
Checked: KC
Revision: P03

Scale @ A1
1 : 5

Scale @ A3
1 : 10