

IMPORTANT INFORMATION:

- DO NOT SCALE THIS DRAWING, DRAWINGS AVAILABLE ON REQUEST.
- ALL DIMENSIONS ARE IN MILLIMETRES, UNLESS OTHERWISE STATED.
- THIS DRAWING IS CONFIDENTIAL AND THE COPYRIGHT IS VESTED IN STUDIOLET LTD.
- IT MUST NOT BE COPIED, LENT OR DISCLOSED TO A THIRD PARTY, WITHOUT THE WRITTEN CONSENT OF STUDIOLET LTD.
- IT IS SUBJECT TO RECALL & REVISION CONTROL.

NOTES:

Studiolet Ltd

26 Cleveland Gardens, London W2 6DE

REVISION HISTORY

REV A	Primary
REV B	
REV C	
REV D	
REV E	

DO NOT SCALE THIS DRAWING, DWG'S AVAILABLE ON REQUEST.

ALL DIMENSIONS IN MM UNLESS OTHERWISE NOTED

	NAME	SIGNATURE	DATE
DRAWN BY:	HM		09 Aug 2023
LAST EDIT DATE:			
APPROVED BY:			

DRAWING ISSUE STATUS:

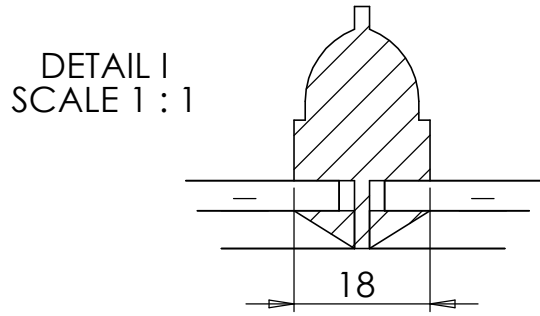
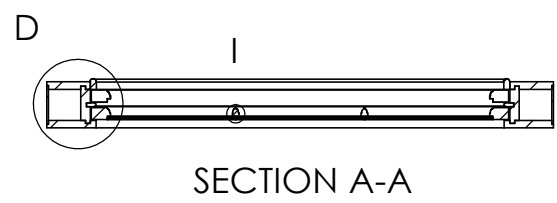
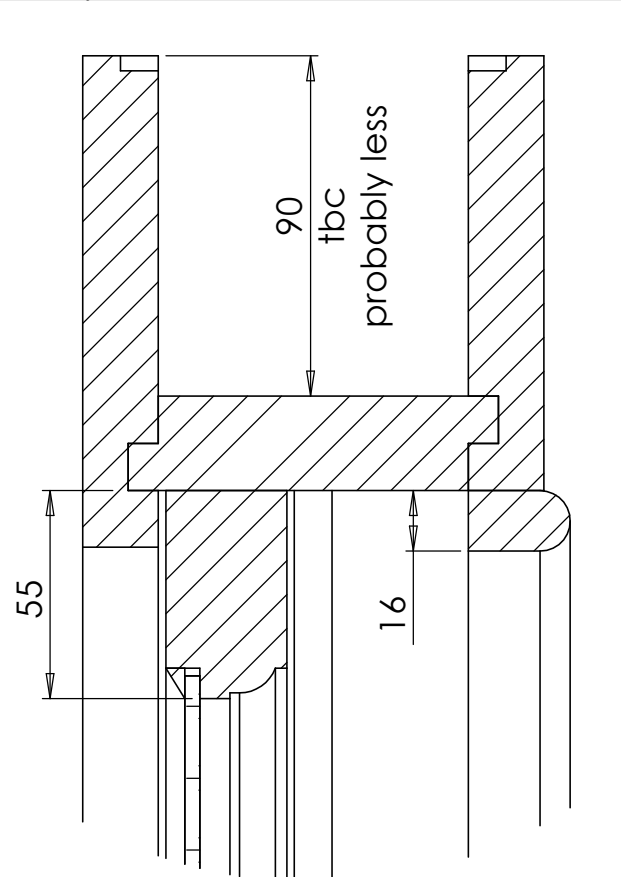
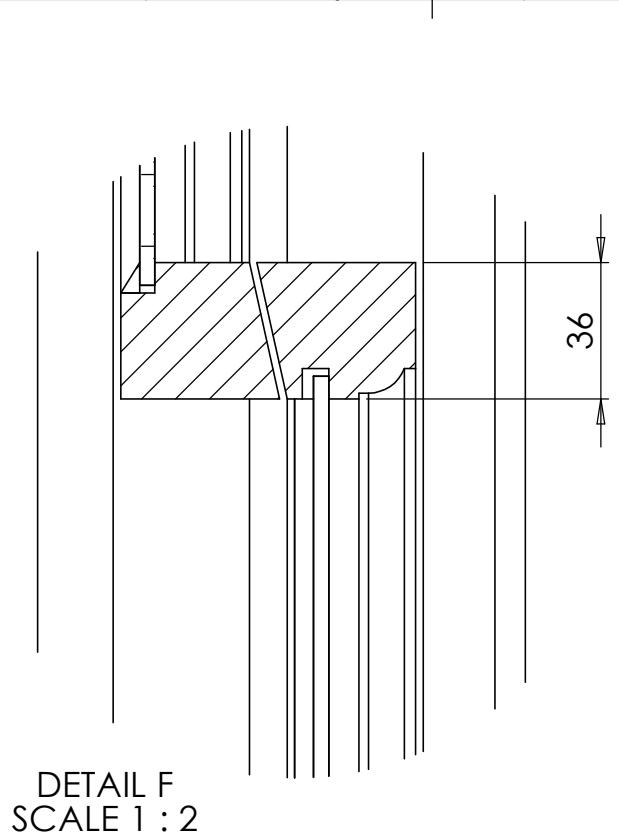
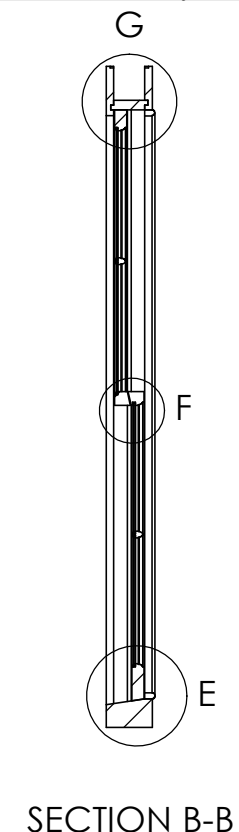
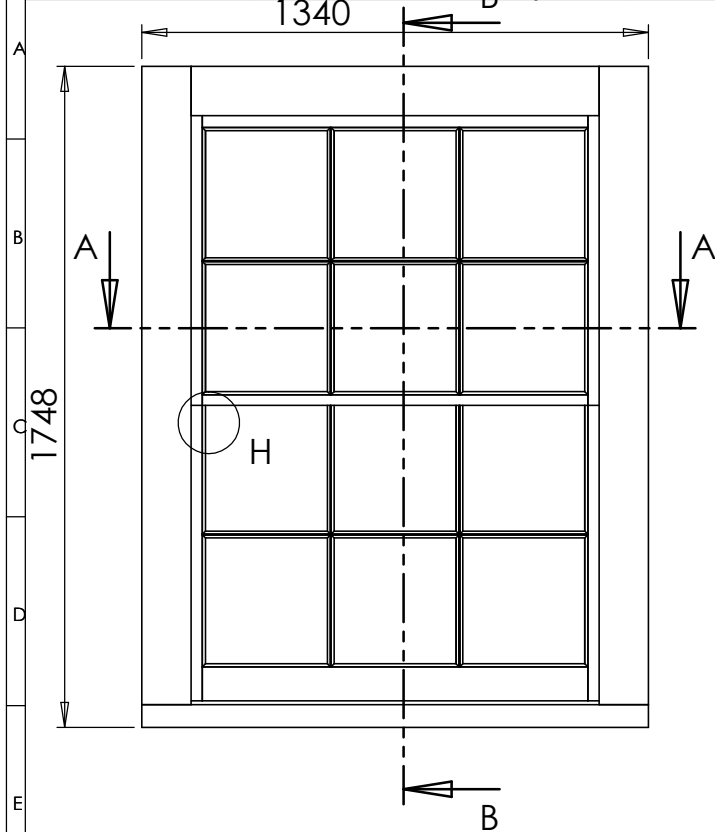
MATERIAL:	FINISH:	SHEET SIZE A3
-----------	---------	------------------

CUSTOMER: Studiolet

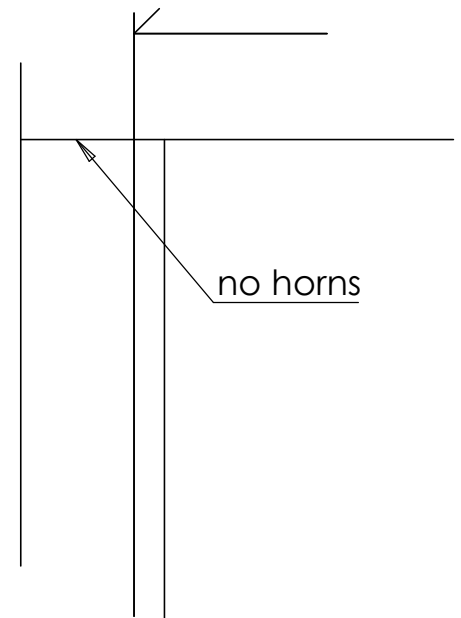
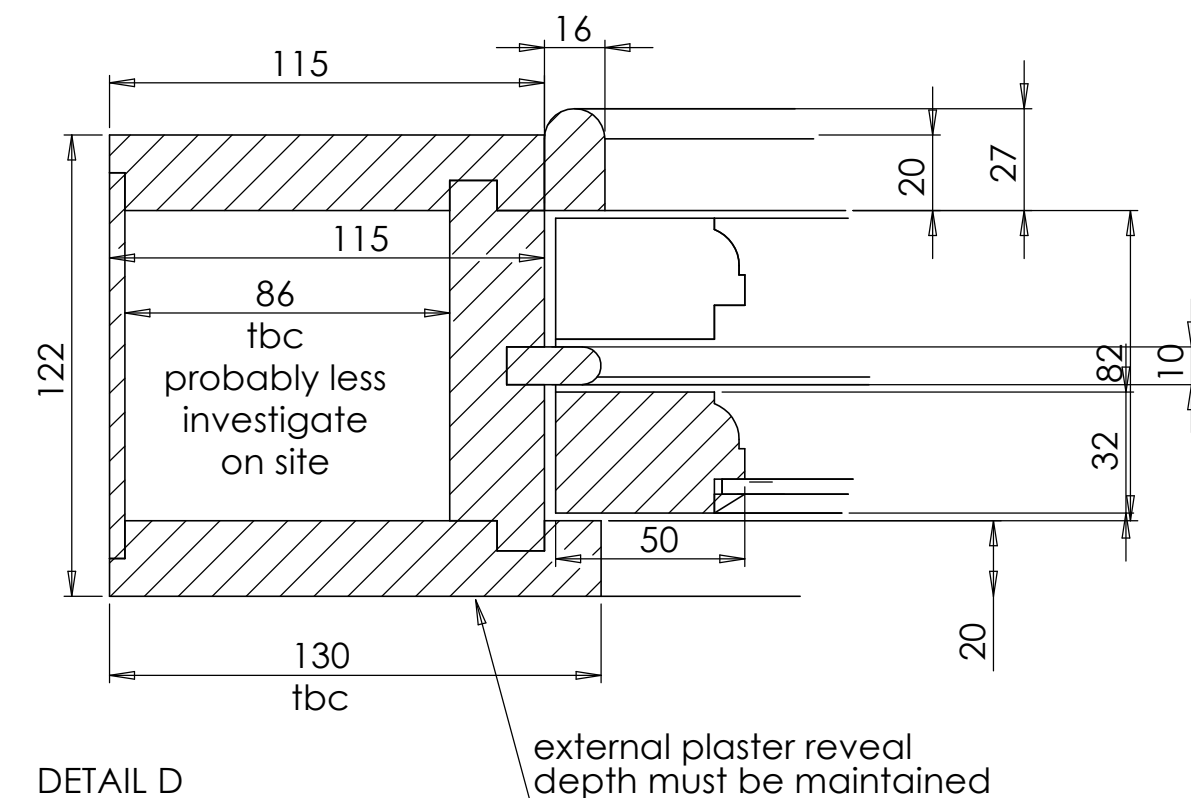
PROJECT: 64-65 Guilford Street

TITLE:
New windows to replace existing
Type 11

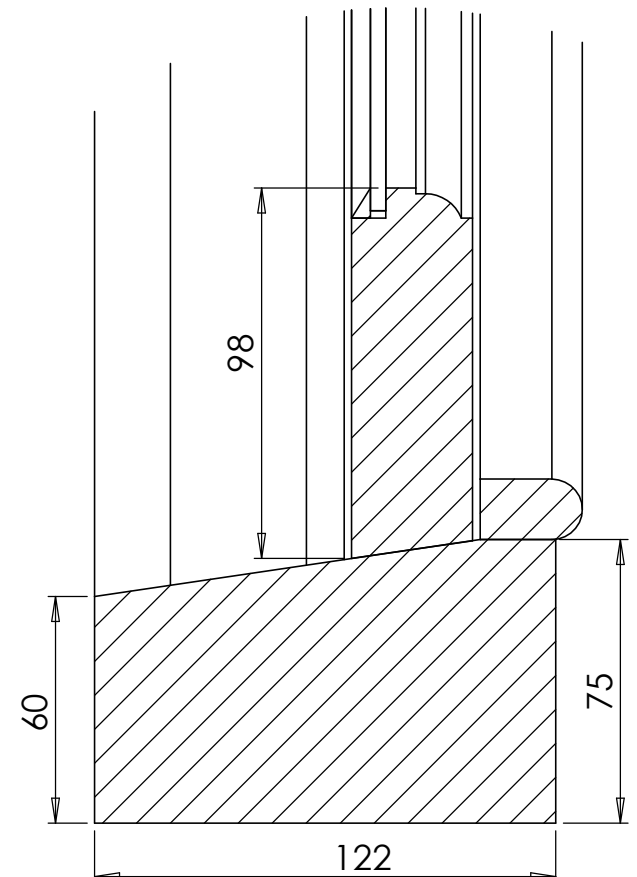
DWG NO. ST-GU-190	REVISION A	THIRD ANGLE PROJECTION
----------------------	---------------	---------------------------



DETAIL G
SCALE 1 : 2



DETAIL H
SCALE 1 : 2



DETAIL E
SCALE 1 : 2

TYPE 11 WBR1

IMPORTANT INFORMATION:

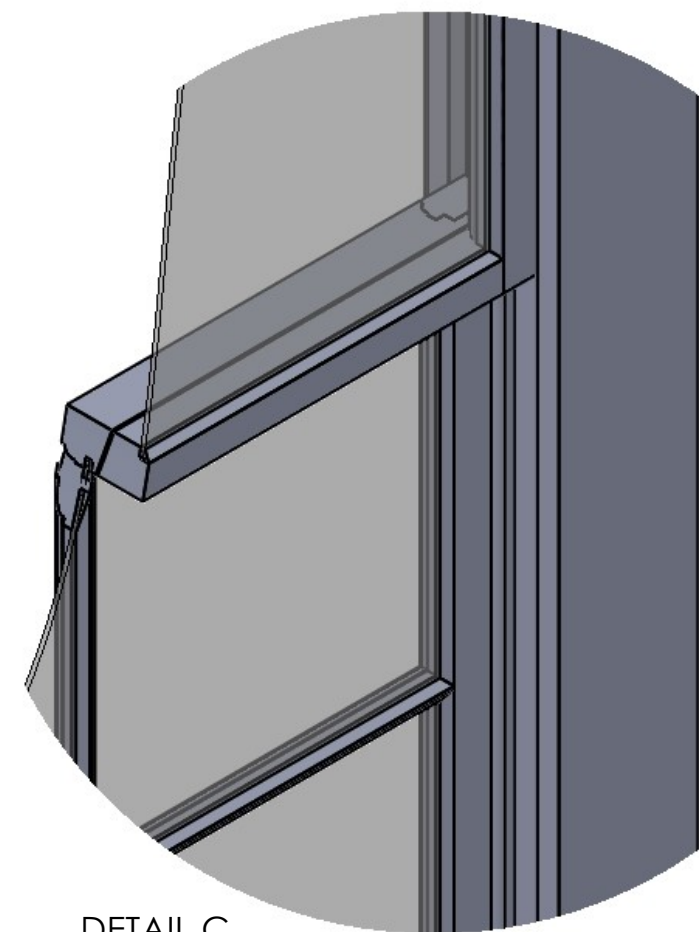
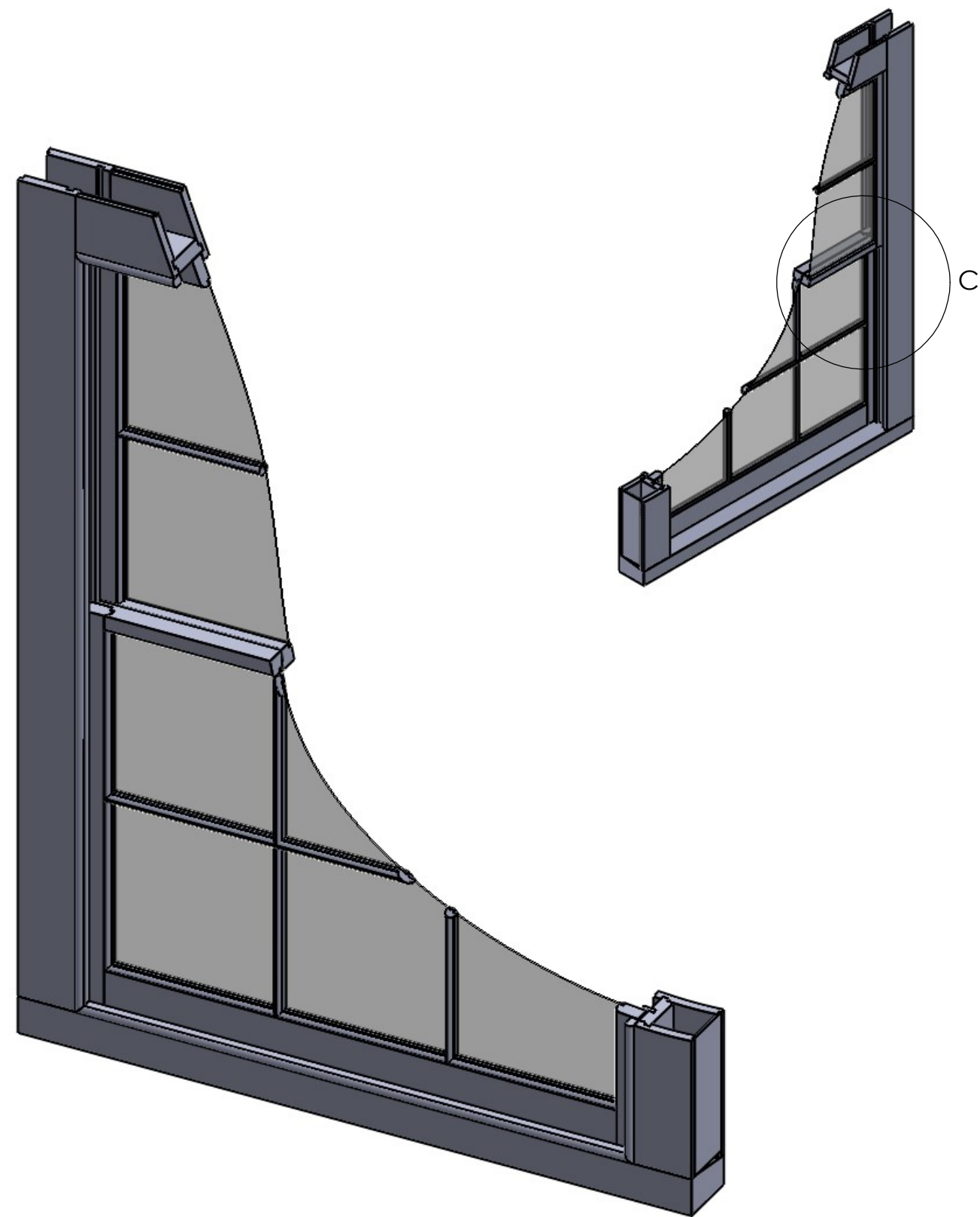
- DO NOT SCALE THIS DRAWING, DRAWINGS AVAILABLE ON REQUEST.
- ALL DIMENSIONS ARE IN MILLIMETRES, UNLESS OTHERWISE STATED.
- THIS DRAWING IS CONFIDENTIAL AND THE COPYRIGHT IS VESTED IN STUDIOLET LTD.
- IT MUST NOT BE COPIED, LENT OR DISCLOSED TO A THIRD PARTY, WITHOUT THE WRITTEN CONSENT OF STUDIOLET LTD.
- IT IS SUBJECT TO RECALL & REVISION CONTROL.

NOTES:

Studiolet Ltd
26 Cleveland Gardens, London W2 6DE

NOTES

- 1 These are the details of Type 1 windows which will be used to replace windows on the rear elevation. This drawing is for sections only, and where applied to windows other than WBR1 different pane configurations may apply
- 2 Permission should be sought from the listing authority to carry out any work on the windows.
- 3 The box depth needs to be confirmed on site. Plaster has not been removed to ascertain this thickness.
- 4 It is critical that the plaster reveal on the outside (ie the amount of frame showing beyond the render), is maintained.
- 5 It is hoped that the listing authority may agree to the fitting of some draught seals following consultation.
- 6 Some details like that at the cill are weak. It would be advisable to consult with the listing authority as to whether some changes can be made.



DETAIL C
SCALE 1 : 5

TYPE 11 WBR1

REVISION HISTORY

REV A	Primary		
REV B			
REV C			
REV D			
REV E			

DO NOT SCALE THIS DRAWING, DWG'S AVAILABLE ON REQUEST.
ALL DIMENSIONS IN MM UNLESS OTHERWISE NOTED

	NAME	SIGNATURE	DATE
DRAWN BY:	HM		09 Aug 2023
LAST EDIT DATE:			
APPROVED BY:			

DRAWING ISSUE STATUS:

MATERIAL:	FINISH:	SHEET SIZE A3
-----------	---------	------------------

CUSTOMER: Studiolet

PROJECT: 64-65 Guilford Street

TITLE:
New windows to replace existing Type 11

DWG NO. ST-GU-190	REVISION A	
----------------------	---------------	--