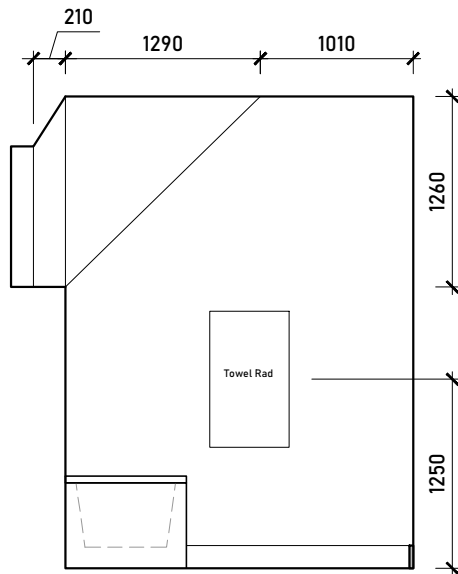
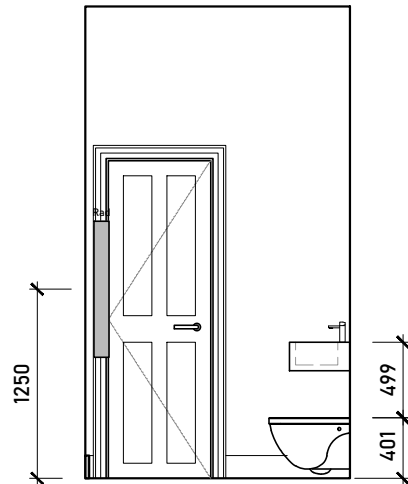


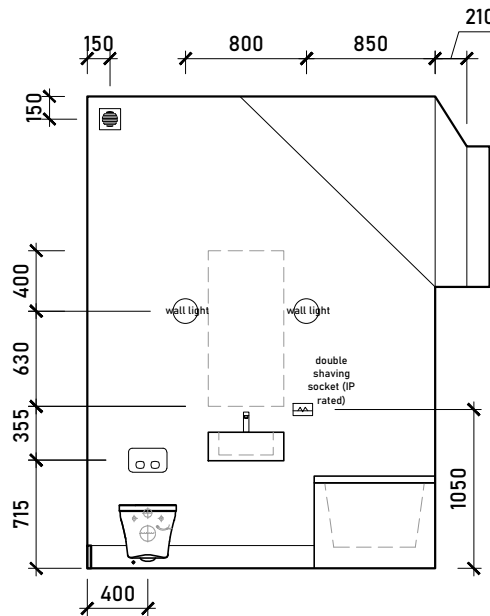
Internal Elevation A



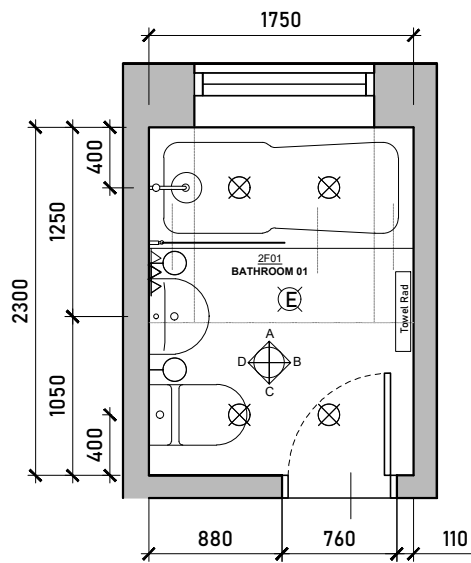
Internal Elevation B



Internal Elevation C



Internal Elevation D



Proposed Bathroom Floorplan
Scale 1:50 @ A3



Issued For				
COMMENT				
General Notes:				
THIS DRAWING HAS BEEN PREPARED BY MICHAEL EALES ARCHITECTS AND THE DATA CONTAINED HEREIN MAY BE USED OR REPRODUCED ONLY WITH MICHAEL EALES ARCHITECTS' APPROVAL.				

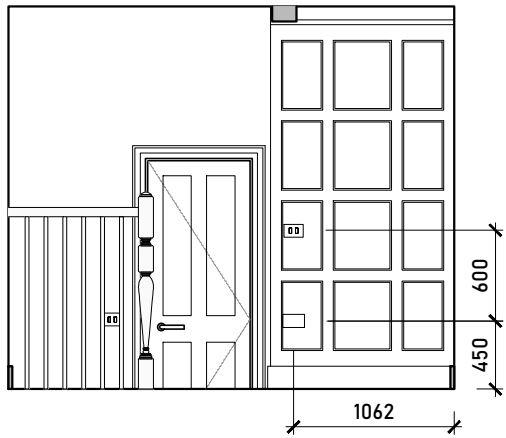
Rev.	Description	Date	Signed	Checked

--

--

A3 Scale 1:50 @ A3	Date 29.06.23	Drawn by AA	Checked by ME
Drawing Title Proposed Internal Elevations 2FL			
Project 32 Steele's Road London NW3 4RE			

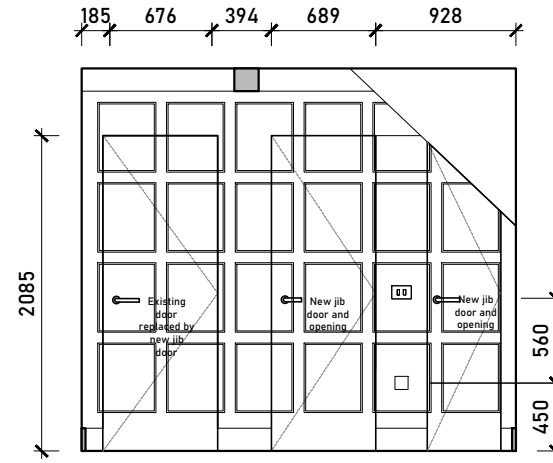
<div>ME</div> <div>ARCHITECTS</div>			113 Fore Street, Hertford Hertfordshire, SG14 1AS T - 07764 496 345 E - info@me-architects.co.uk		
Project no. 23 / 219		Drawing no. 401		Revision 01	



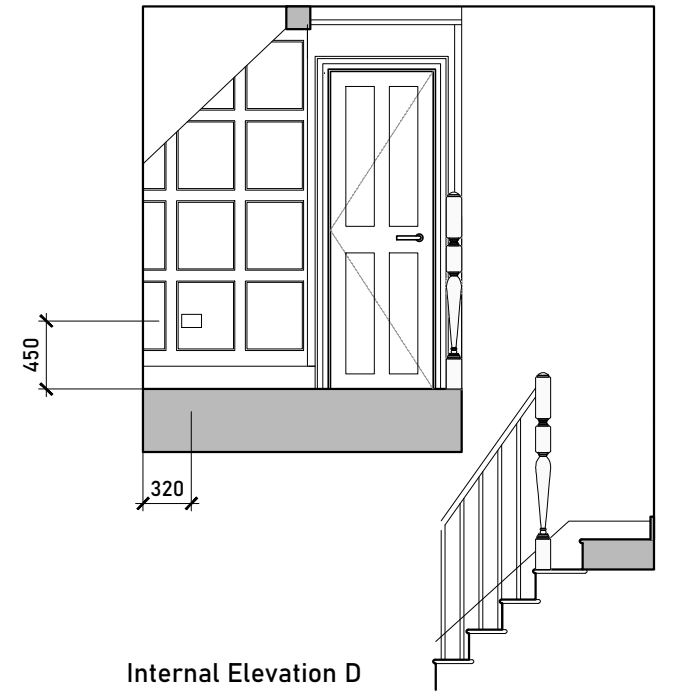
Internal Elevation A



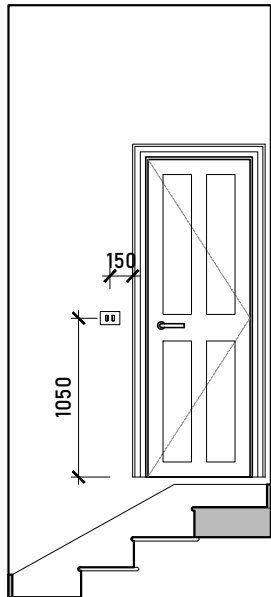
Internal Elevation B



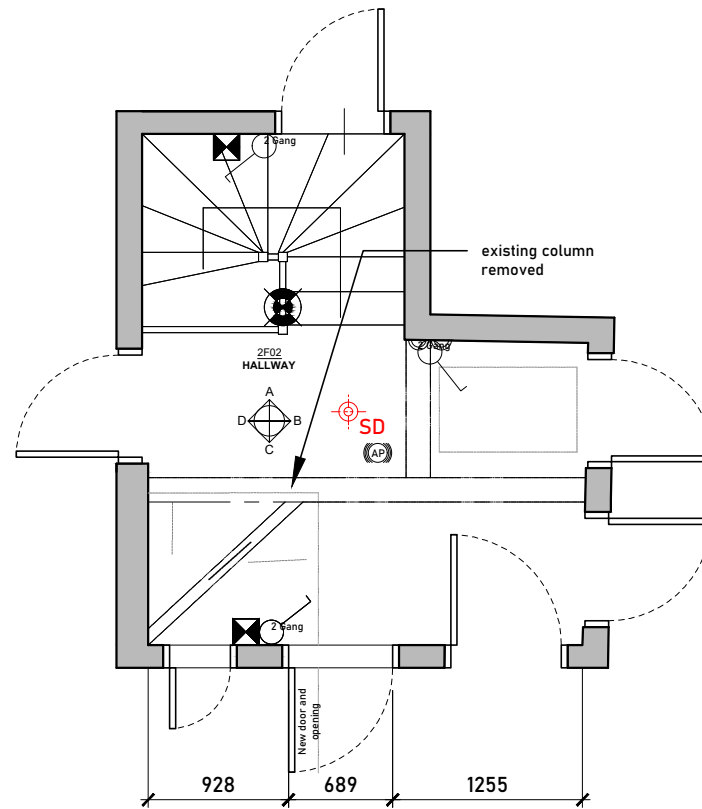
Internal Elevation C



Internal Elevation D



Internal Elevation A_02



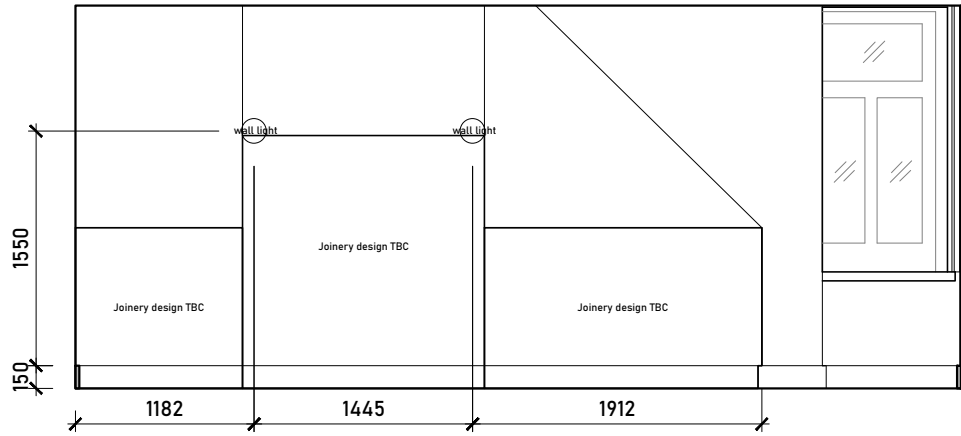
Proposed Hallway Floorplan
Scale 1:50 @ A3



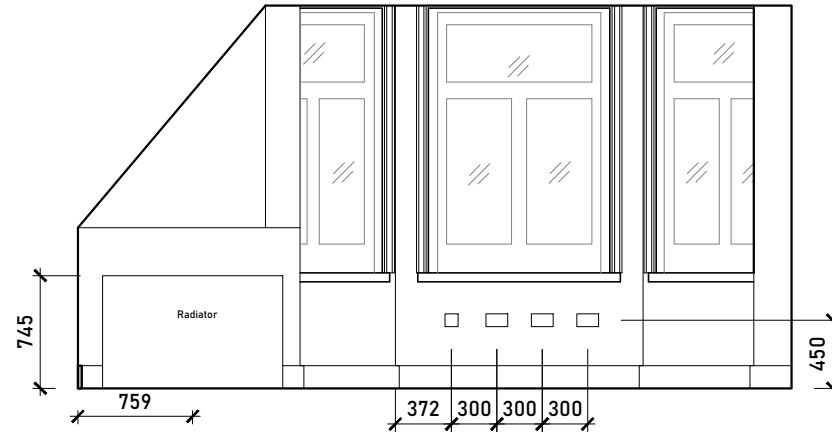
Issued For <div>COMMENT</div>					Rev. Description Date Signed Checked																									A3 Scale 1:50 @ A3				Date 01.08.23		Drawn by AA		Checked by ME		Drawing Title Proposed Internal Elevations 2FL										Project 32 Steele's Road London NW3 4RE										<div><div>ME</div><div>ARCHITECTS</div><div>113 Fore Street, Hertford Hertfordshire, SG14 1AS T - 07764 496 345 E - info@me-architects.co.uk</div></div>										Project no. 23 / 219		Drawing no. 402		Revision 02																																																																																																																																																																																																																																																																																																																																																																																																																																																																																																																																																																																																																																																																																																																																																																																																																																																																																																																																																																																																																																																																																																																																																																																																																																																																																																																																																																																																																																																																																																																																																																																																																																																																																																																																																																																																																																																																																																																																																																																																																																																																																																																																																																																																																																																																																																																																																																																																																																																																																																																																																																																																																																																																																																																																																																																																																																																																																																																																																																																																																																																																																																																																																																																																																																																																																																																																																																																																																																																																																																																																																																																																																																																																																																																																																																																																																																																																																																																																																																																																																																																																																																																																																																																																																																																																																																																																																																																																																																																																																																																																																																																																																																																																																																																																																																																																																																																																																																																																																																																																																																																																																																																																																																																																																																											
General Notes: THIS DRAWING HAS BEEN PREPARED BY MICHAEL EALLES ARCHITECTS AND THE DATA CONTAINED HEREIN MAY BE USED OR REPRODUCED ONLY WITH MICHAEL EALLES ARCHITECTS' APPROVAL.																																																																																																																																																																																																																																																																																																																																																																																																																																																																																																																																																																																																																																																																																																																																																																																																																																																																																																																																																																																																																																																																																																																																																																																																																																																																																																																																																																																																																																																																																																																																																																																																																																																																																																																																																																																																																																																																																																																																																																																																																																																																																																																																																																																																																																																																																																																																																																																																																																																																																																																																																																																																																																																																																																																																																																																																																																																																																																																																																																																																																																																																																																																																																																																																																																																																																																																																																																																																																																																																																																																																																																																																																																																																																																																																																																																																																																																																																																																																																																																																																																																																																																																																																																																																																																																																																																																																																																																																																																																																																																																																																																																																																																																																																																																																																																																																																																																																																																																																																																																																																																																																																																																																																																																																																																																																																																																					

General Notes:

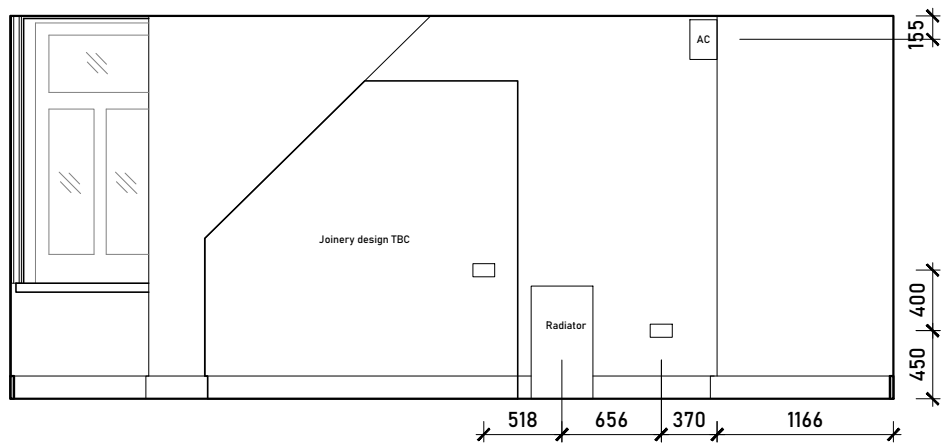
THIS DRAWING HAS BEEN PREPARED BY MICHAEL EALES ARCHITECTS AND THE DATA CONTAINED HEREIN MAY BE USED OR REPRODUCED ONLY WITH MICHAEL EALES ARCHITECTS' APPROVAL.



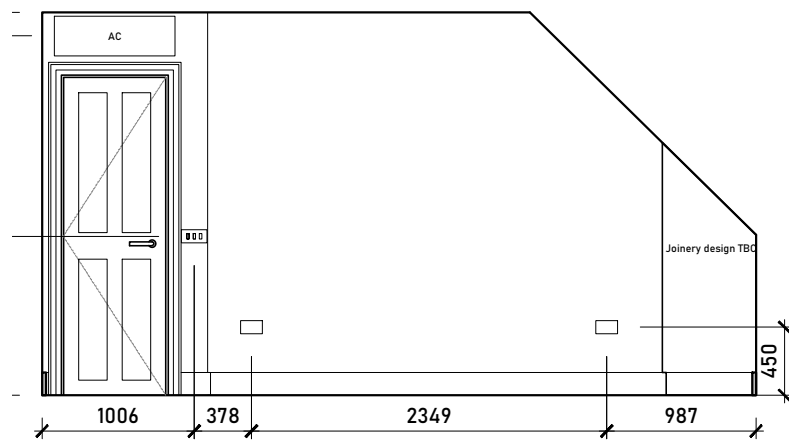
Internal Elevation A



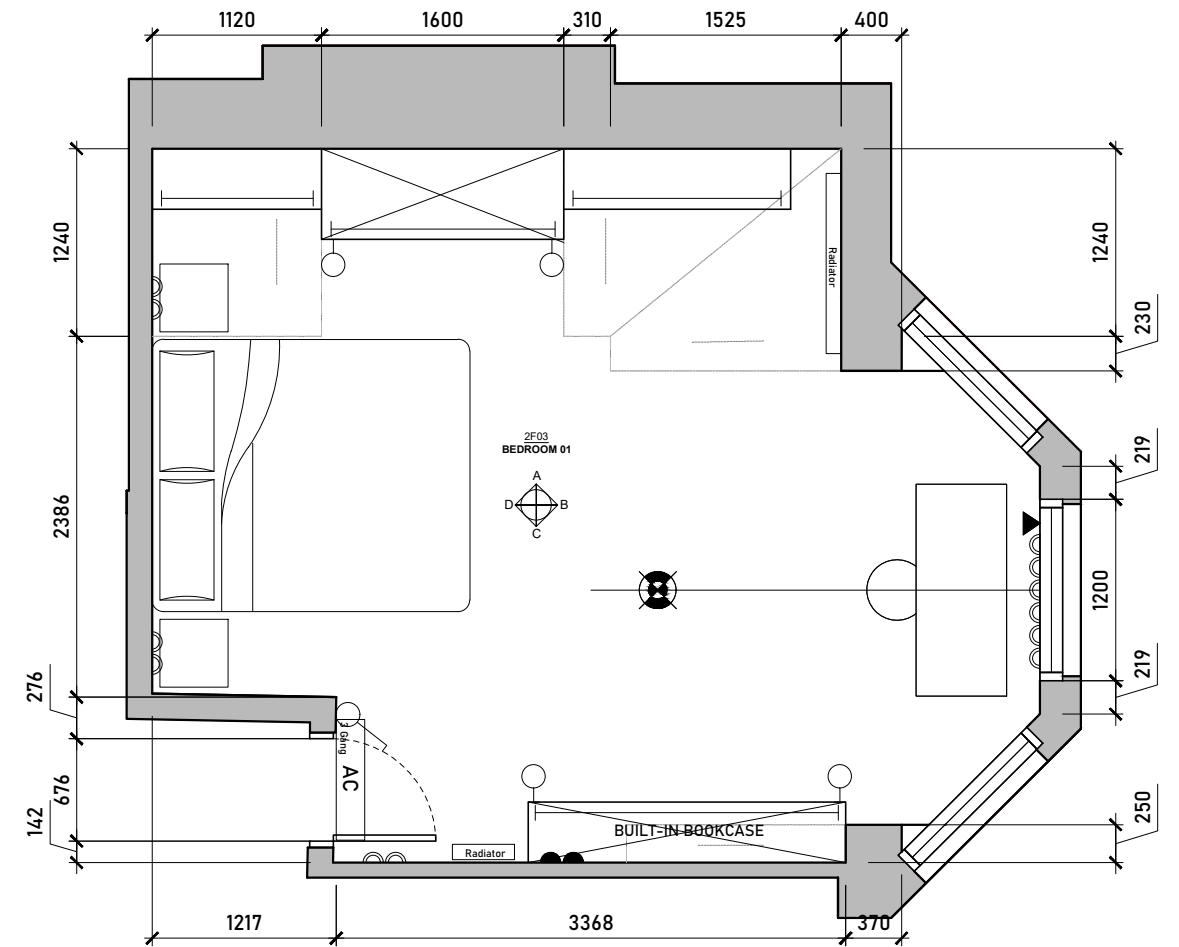
Internal Elevation B



Internal Elevation C



Internal Elevation D

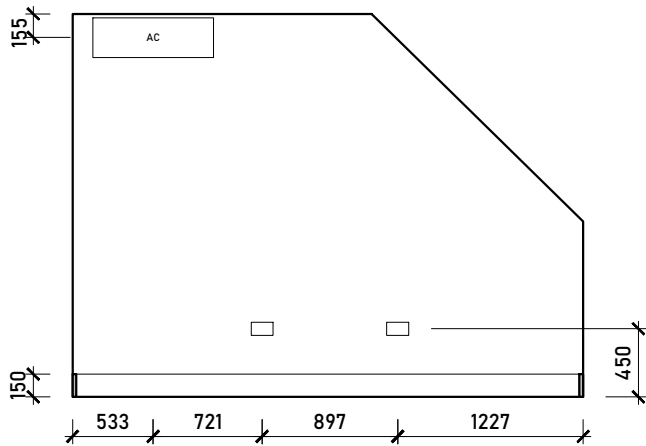


Proposed Bedroom Floorplan

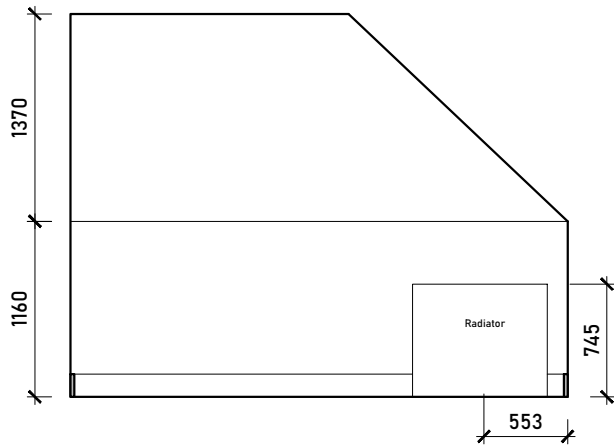
Scale 1:50 @ A3



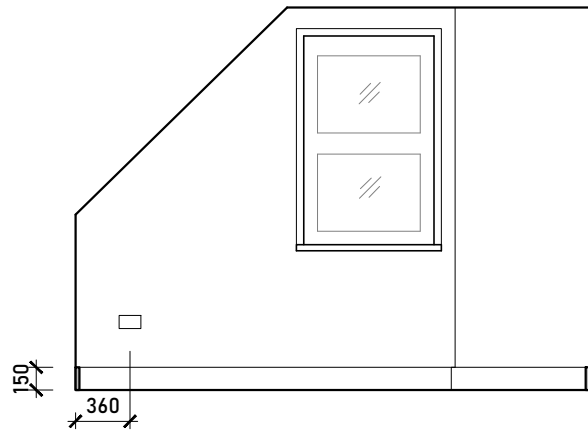
Issued For <div>COMMENT</div>		Rev.	Description	Date	Signed	Checked					A3 Scale 1:50 @ A3		Date 29.06.23	Drawn by AA	Checked by ME	<div>113 Fore Street, Hertford Hertfordshire, SG14 1AS</div> <div>T - 07764 496 345 E - info@me-architects.co.uk</div>		
General Notes: THIS DRAWING HAS BEEN PREPARED BY MICHAEL EALLES ARCHITECTS AND THE DATA CONTAINED HEREIN MAY BE USED OR REPRODUCED ONLY WITH MICHAEL EALLES ARCHITECTS' APPROVAL.											Drawing Title Proposed Internal Elevations 2FL							
											Project 32 Steele's Road London NW3 4RE					Project no. 23 / 219	Drawing no. 403	Revision 01



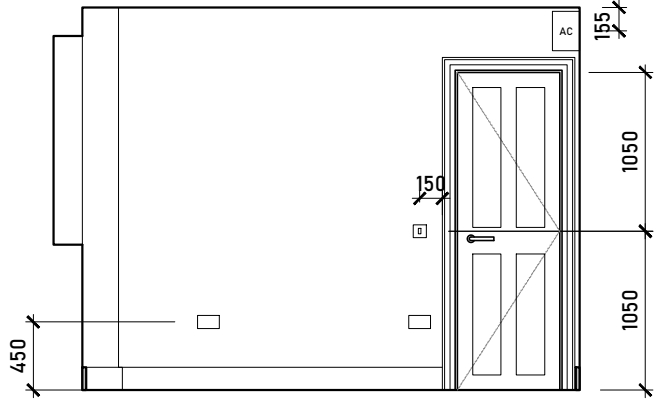
Internal Elevation A



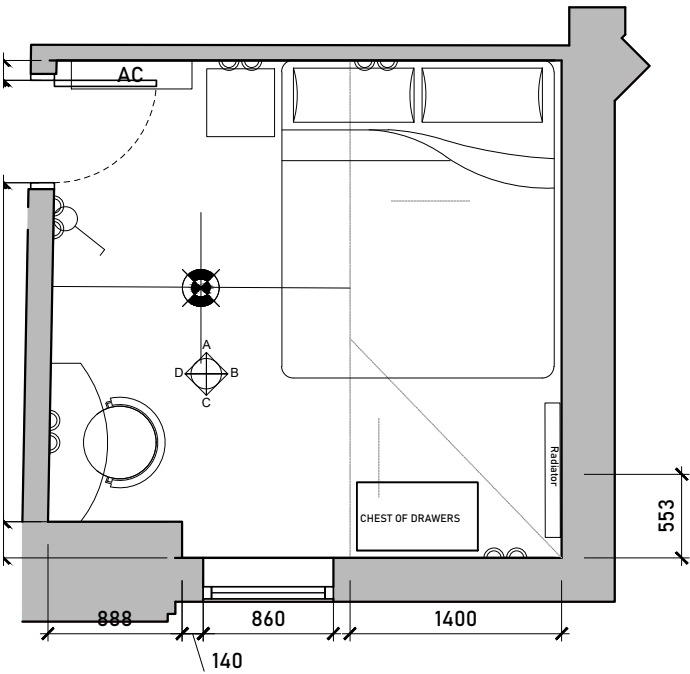
Internal Elevation B



Internal Elevation C



Internal Elevation D



Proposed Bedroom Floorplan
Scale 1:50 @ A3

Issued For
COMMENT
General Notes: THIS DRAWING HAS BEEN PREPARED BY MICHAEL EALES ARCHITECTS AND THE DATA CONTAINED HEREIN MAY BE USED OR REPRODUCED ONLY WITH MICHAEL EALES ARCHITECTS' APPROVAL.

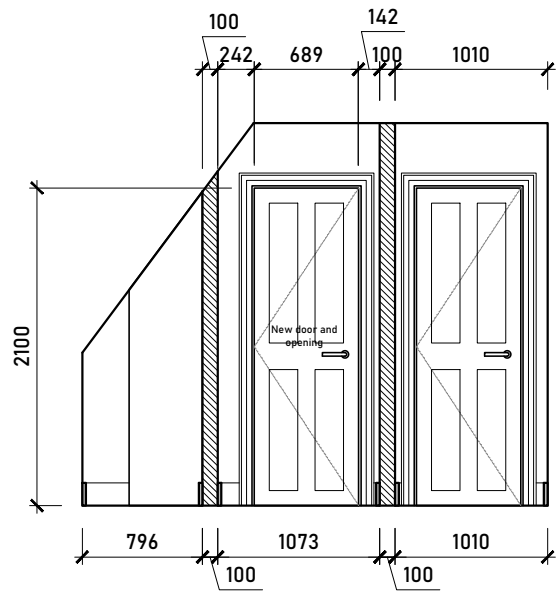
Rev.	Description	Date	Signed	Checked

--

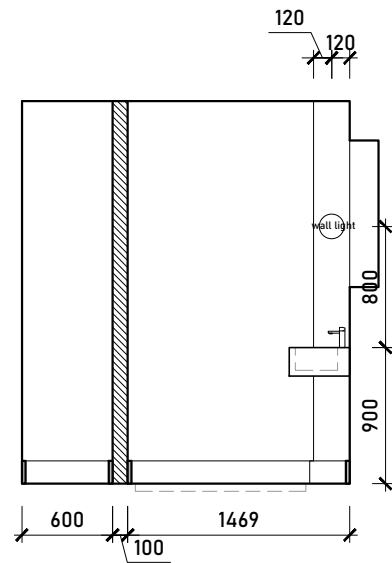
--

A3 Scale 1:50 @ A3	Date 29.06.23	Drawn by AA	Checked by ME
Drawing Title Proposed Internal Elevations 2FL			
Project 32 Steele's Road London NW3 4RE			

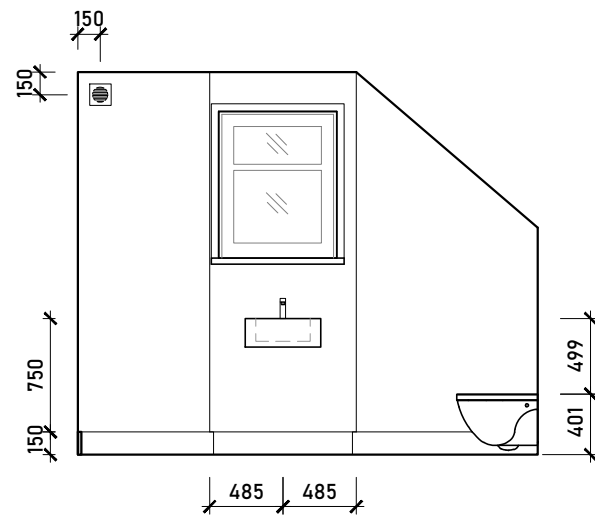
ME ARCHITECTS 113 Fore Street, Hertford Hertfordshire, SG14 1AS T - 07764 496 345 E - info@me-architects.co.uk		
Project no. 23 / 219	Drawing no. 404	Revision 01



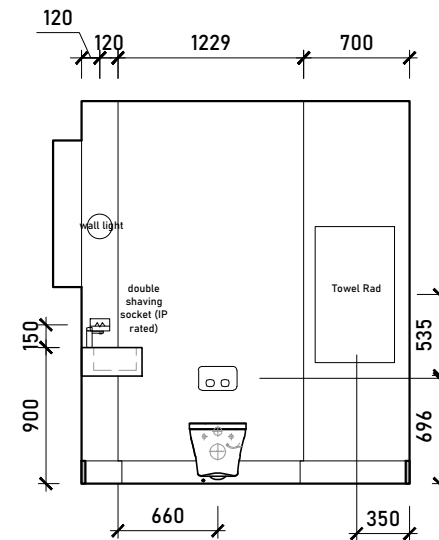
Internal Elevation A



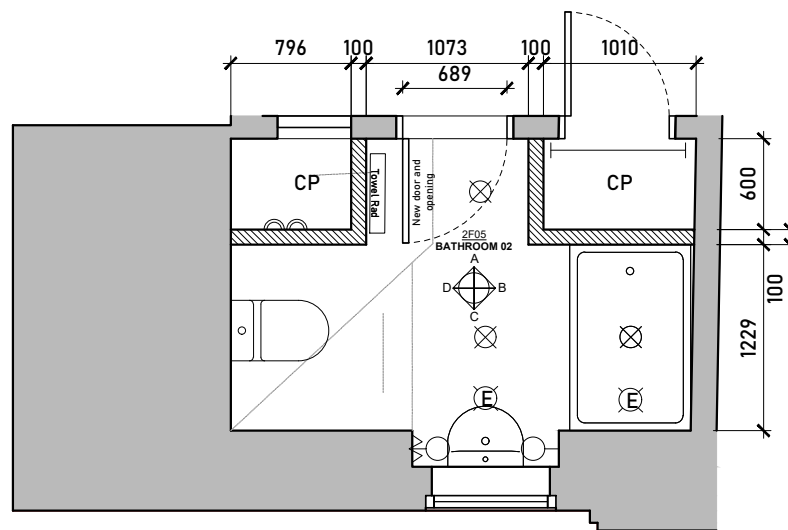
Internal Elevation B



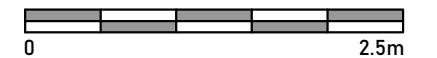
Internal Elevation C



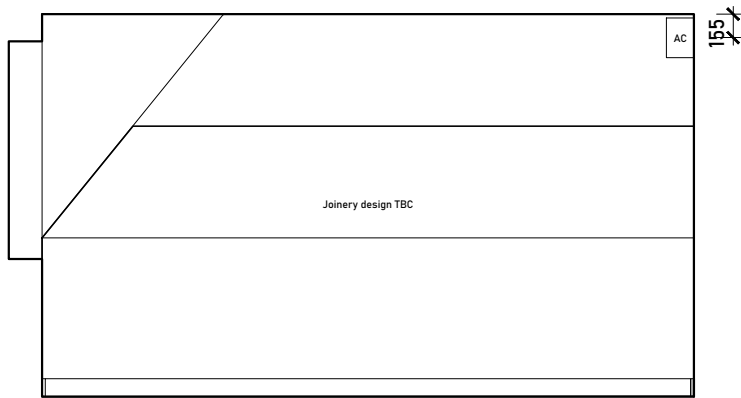
Internal Elevation D



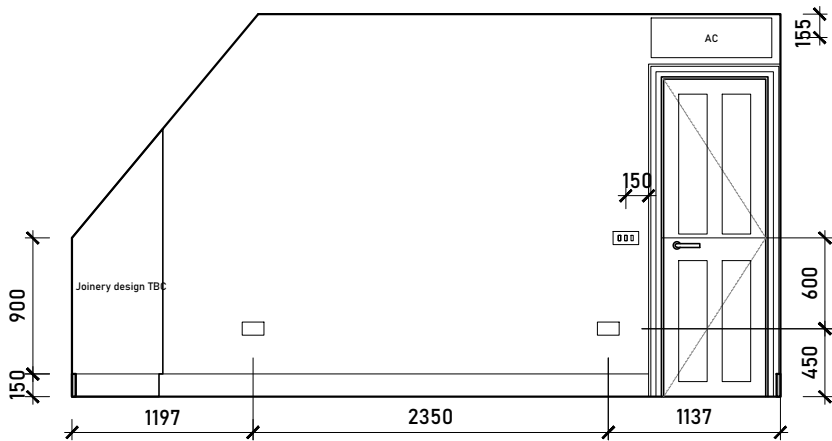
Proposed Bathroom Floorplan
Scale 1:50 @ A3



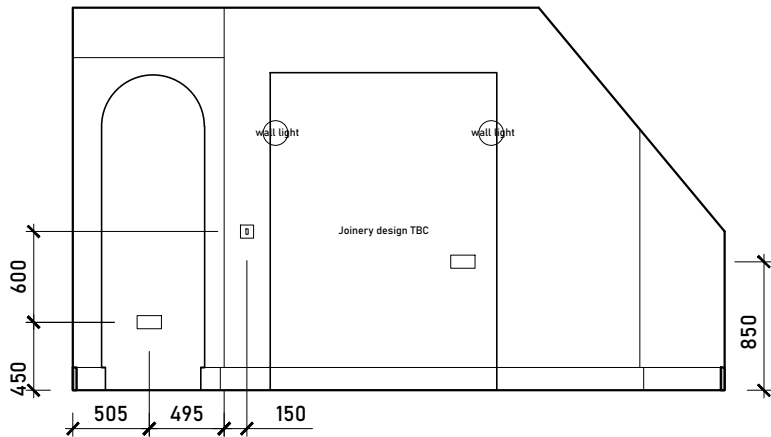
Issued For <div>COMMENT</div>		Rev.	Description	Date	Signed	Checked			A3 Scale 1:50 @ A3		Date 10.07.23	Drawn by AA	Checked by ME	<div>ME</div> <div>113 Fore Street, Hertford Hertfordshire, SG14 1AS</div> <div>T - 07764 496 345 E - info@me-architects.co.uk</div> <div>A R C H I T E C T S</div>	
General Notes: THIS DRAWING HAS BEEN PREPARED BY MICHAEL EALES ARCHITECTS AND THE DATA CONTAINED HEREIN MAY BE USED OR REPRODUCED ONLY WITH MICHAEL EALES ARCHITECTS' APPROVAL.									Drawing Title Proposed Internal Elevations 2FL						
									Project 32 Steele's Road London NW3 4RE						
										Project no. 23 / 219		Drawing no. 405		Revision 03	



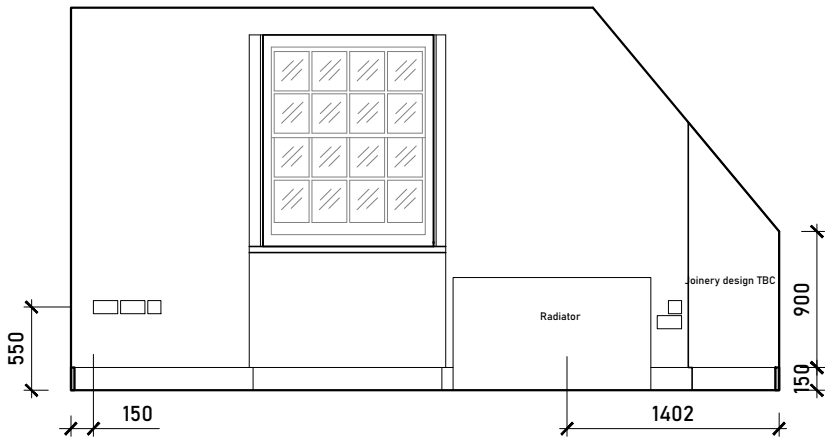
Internal Elevation A



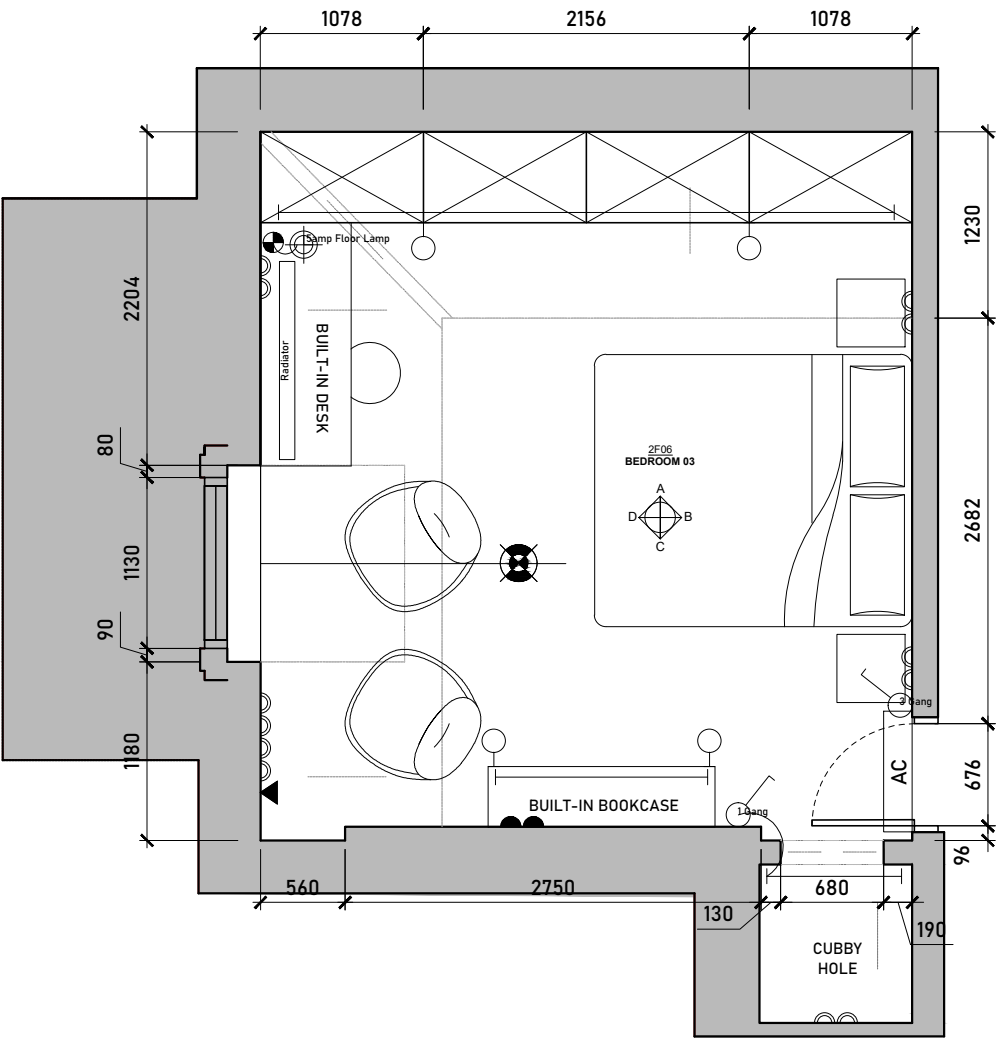
Internal Elevation B



Internal Elevation C



Internal Elevation D



Proposed Bedroom Floorplan
Scale 1:50 @ A3



Issued For
COMMENT
General Notes: THIS DRAWING HAS BEEN PREPARED BY MICHAEL EALES ARCHITECTS AND THE DATA CONTAINED HEREIN MAY BE USED OR REPRODUCED ONLY WITH MICHAEL EALES ARCHITECTS' APPROVAL.

Rev.	Description	Date	Signed	Checked


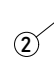





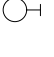
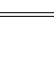




--

--




A3 Scale 1:50 @ A3	Date 12.09.23	Drawn by AA	Checked by ME
Drawing Title Proposed Internal Elevations 2FL			
Project 32 Steele's Road London NW3 4RE			

ME ARCHITECTS 113 Fore Street, Hertford Hertfordshire, SG14 1AS T - 07764 496 345 E - info@me-architects.co.uk		
Project no. 23 / 219	Drawing no. 406	Revision 02







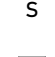





LIGHTING / CEILING LEGEND:

-  Light switch
-  2-way light switch
-  Master dimmer switch
-  Recessed downlight
-  Directional recessed downlight
-  Pendant lights / chandelier
-  Wall light
-  Strip/task lights
-  IPxx External rated fitting
-  E External rated fitting
-  PIR passive infrared sensor
-  Extractor Fan
-  WiFi Access Point

FIRE DETECTION LEGEND:

-  SD Smoke Detector
-  C Carbon Monoxide Detector
-  HD Heat Detector

POWER & DATA LEGEND:

-  13amp Mains twin socket
-  13amp Mains twin socket @ HL
-  13amp Mains twin socket to Floor
-  5amp socket
-  Shaving socket (IP rated)
-  S Spur/Fused switch
-  Isolation switch
-  Data telephone point
-  TV point
-  H Heating Sensor / Thermostat
-  Consumer Unit/Fusebox
-  Sub Distribution Board