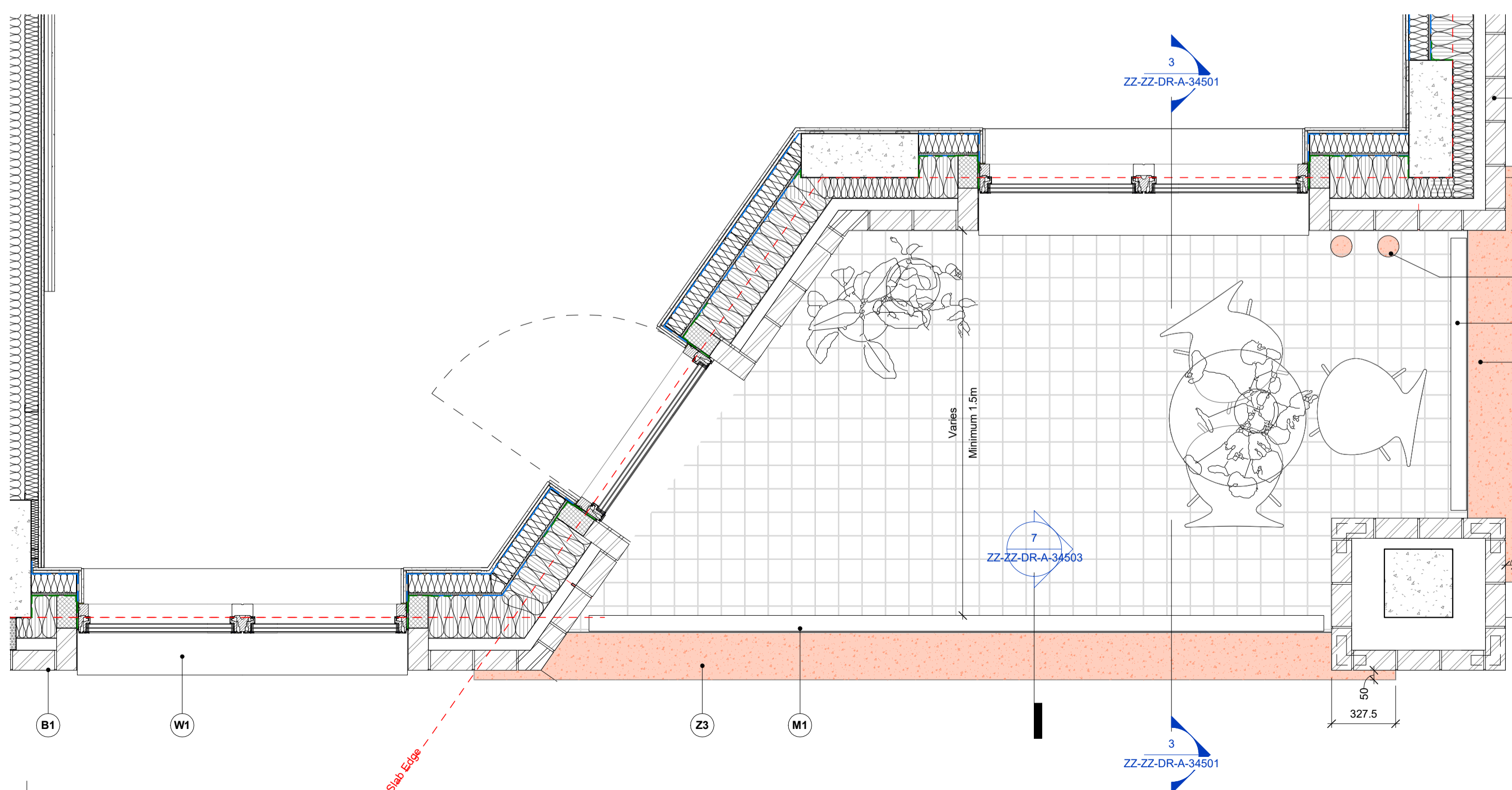
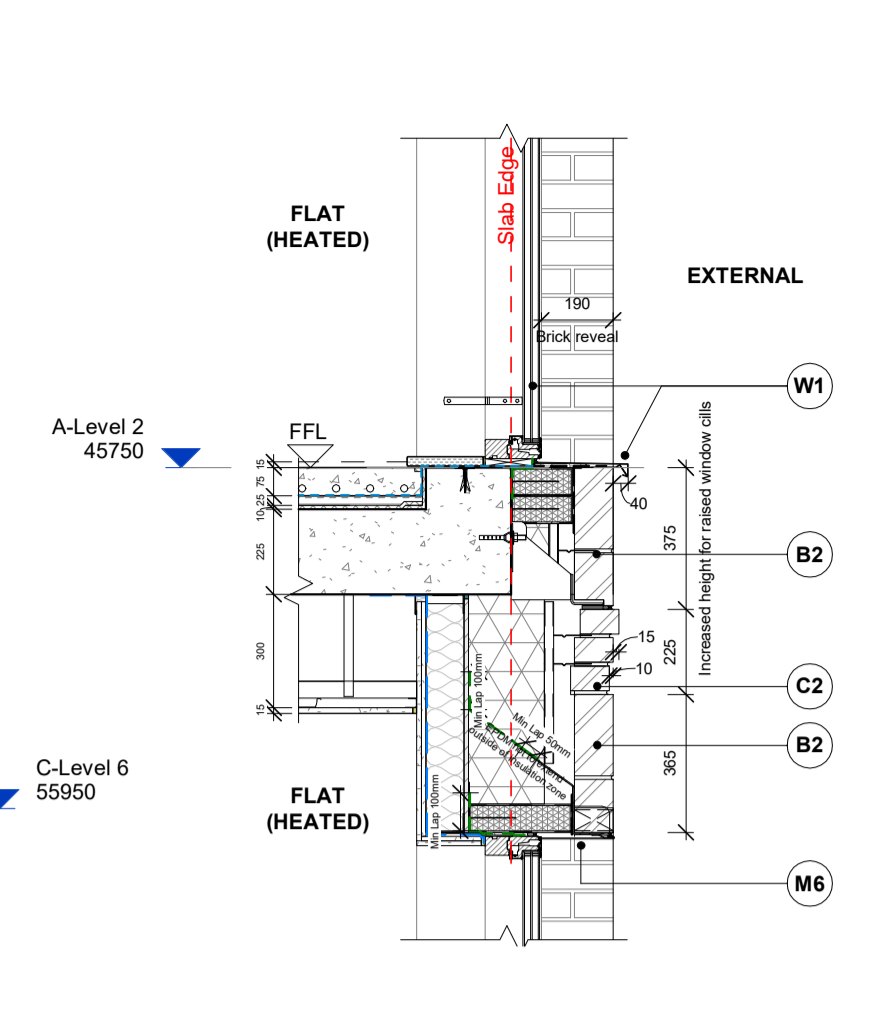


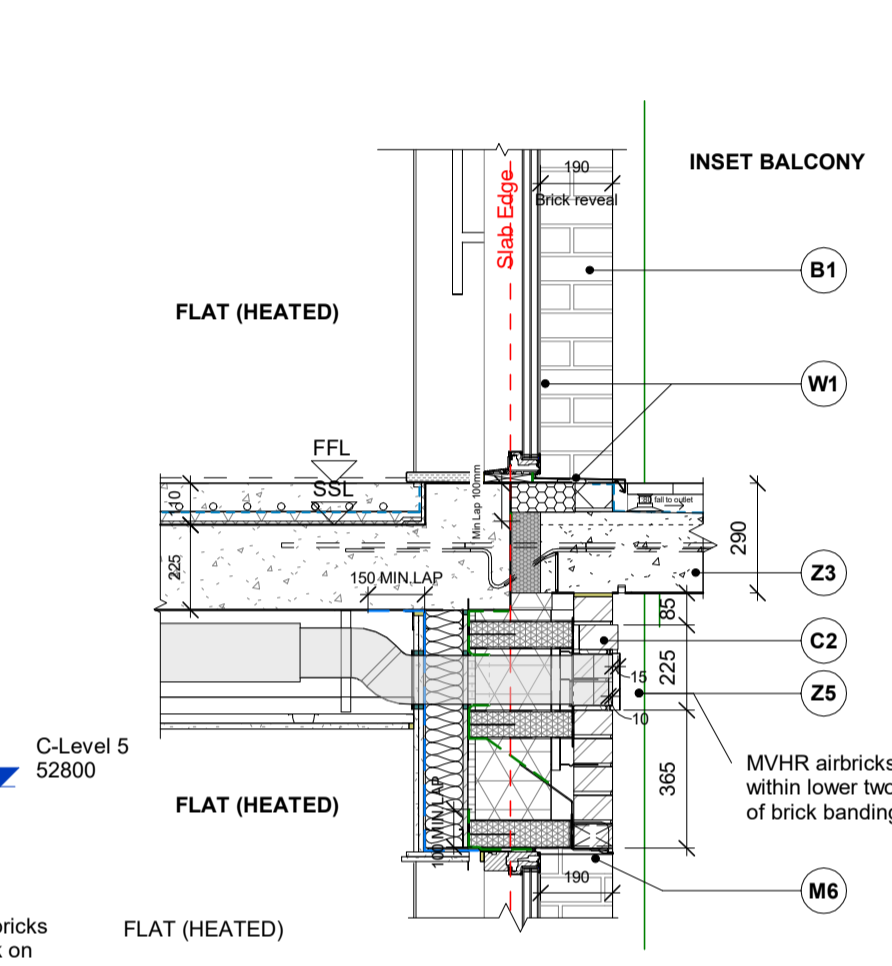
1 Bay Elevation
Scale: 1:20



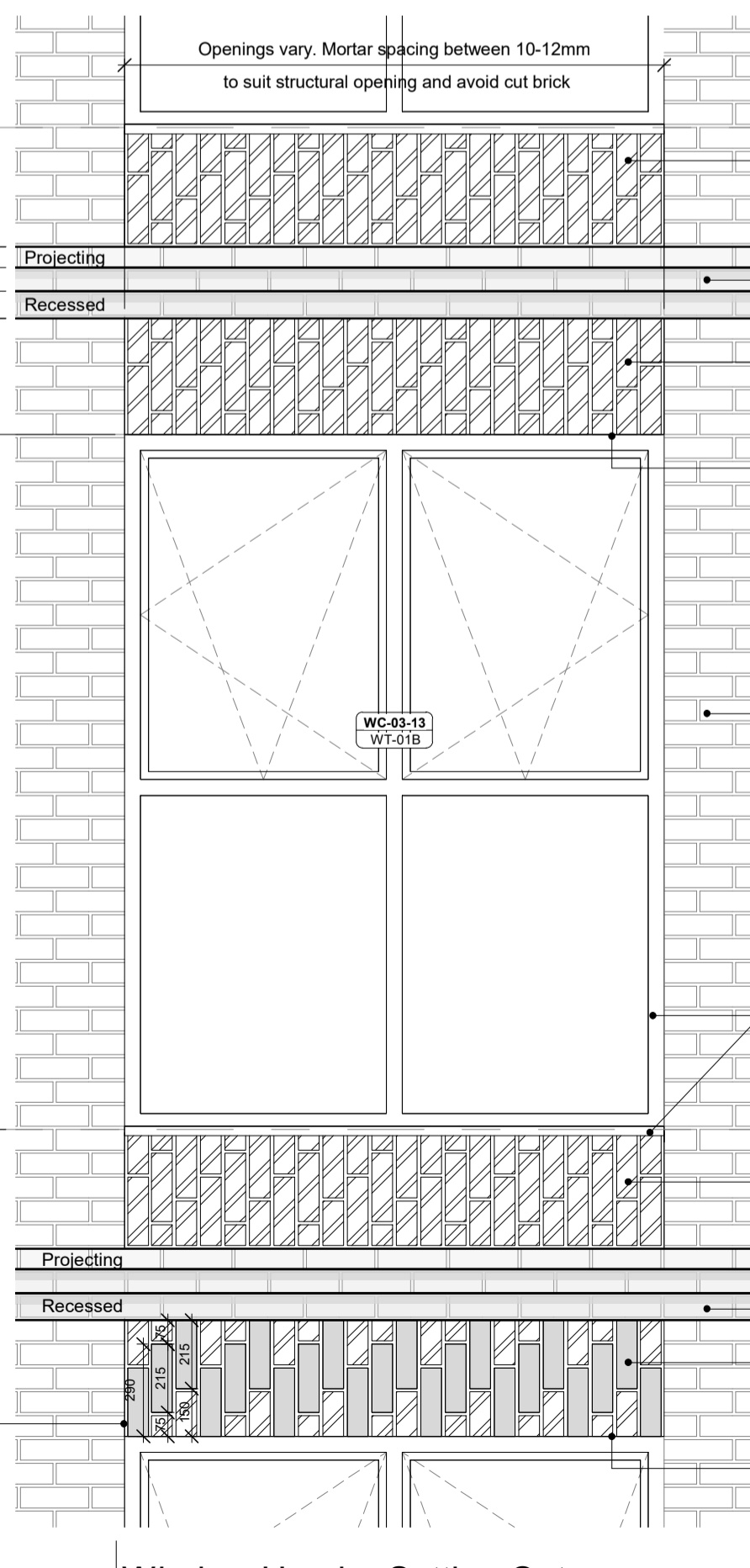
2 Bay Plan
Scale: 1:20



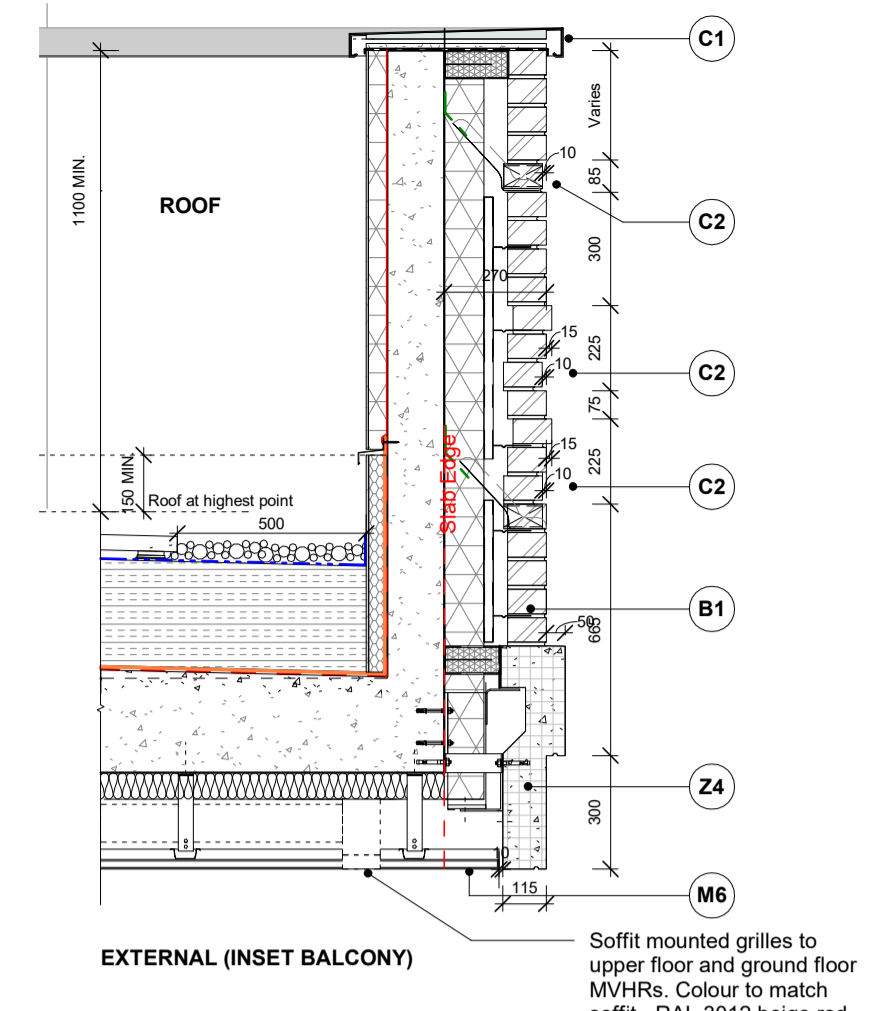
3 Typical Window Head and Sill
Scale: 1:20



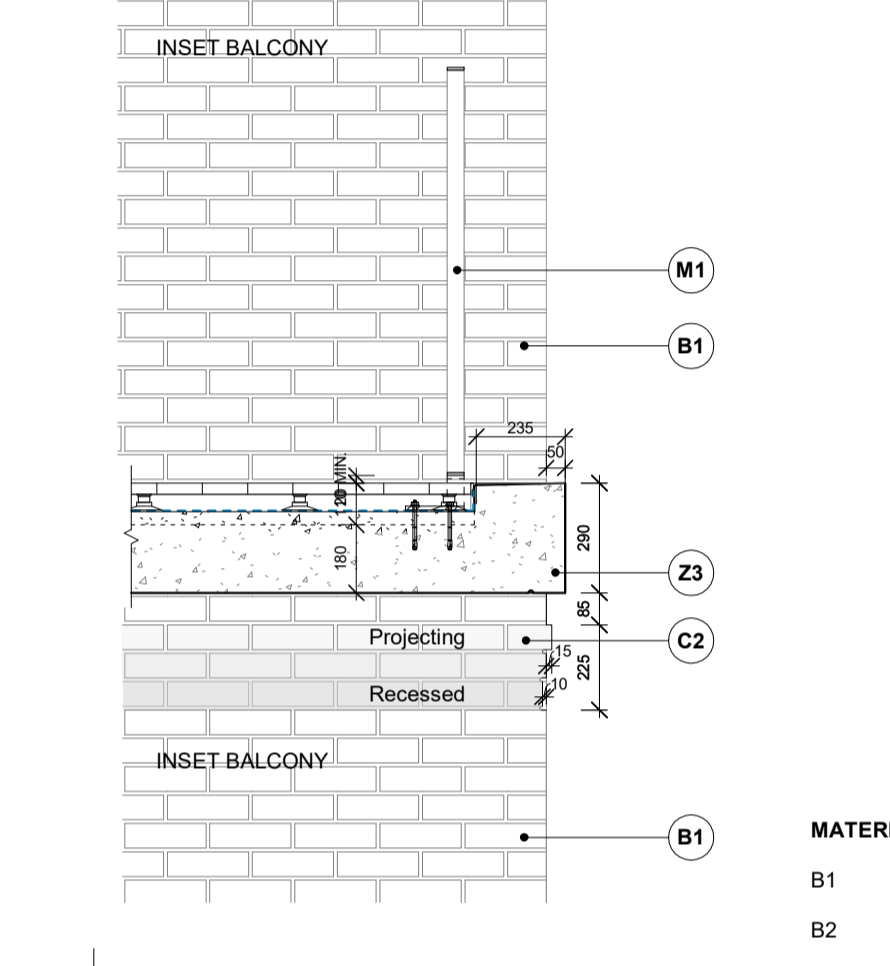
4 Typical Inset Balcony Threshold
Scale: 1:20



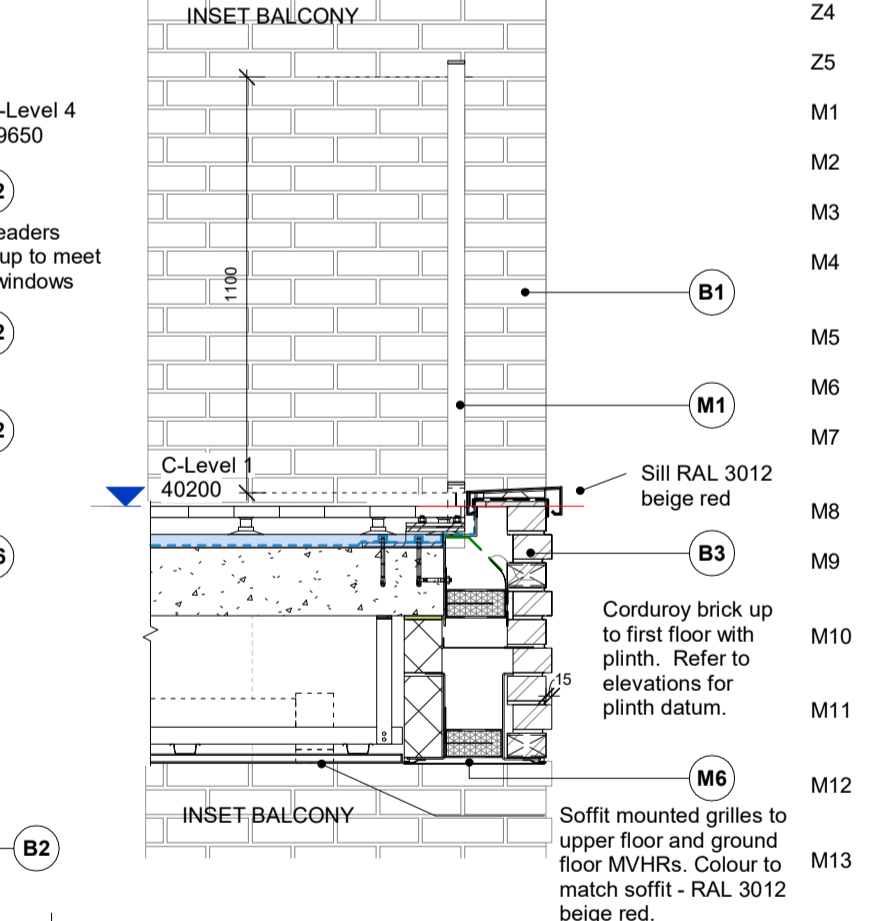
5 Window Header Setting Out
Scale: 1:20



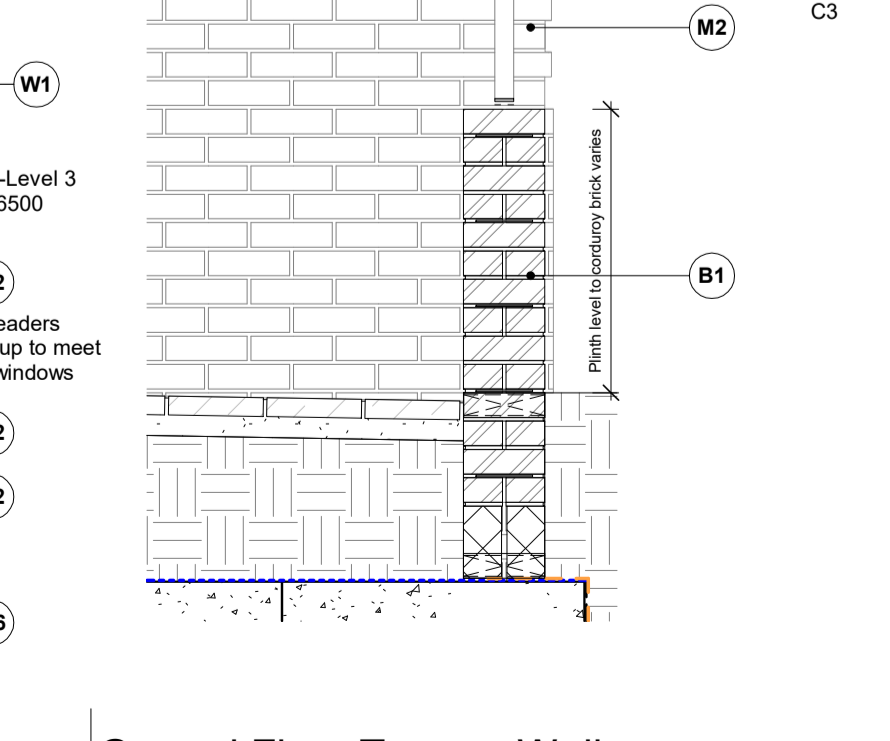
6 Typical Parapet to Inset Balcony
Scale: 1:20



7 Typical Inset Balcony Edge Detail
Scale: 1:20



8 Inset Balcony Edge Detail - First Floor
Scale: 1:20



9 Ground Floor Terrace Wall
Scale: 1:20

GENERAL NOTES:
This drawing is © 2019 Pollard Thomas Edwards LLP (PTE).
Use figured dimensions only. **DO NOT SCALE.**
All dimensions are in millimetres unless noted otherwise.
This drawing must be read in conjunction with all other relevant drawings and specifications from the Architect and other consultants.
If in doubt, ask.

SETTING OUT NOTES:
All setting out to be confirmed on site prior to construction - any discrepancy must be immediately reported to the Architect.
All setting out to face of structure or grid. All partitions set out to studwork or structure.
For setting out and specification of M&E services refer to M&E Consultants documents.
For setting out and specification of structure refer to Structural Engineer's documents.

Scale: 1:20
Millimetres

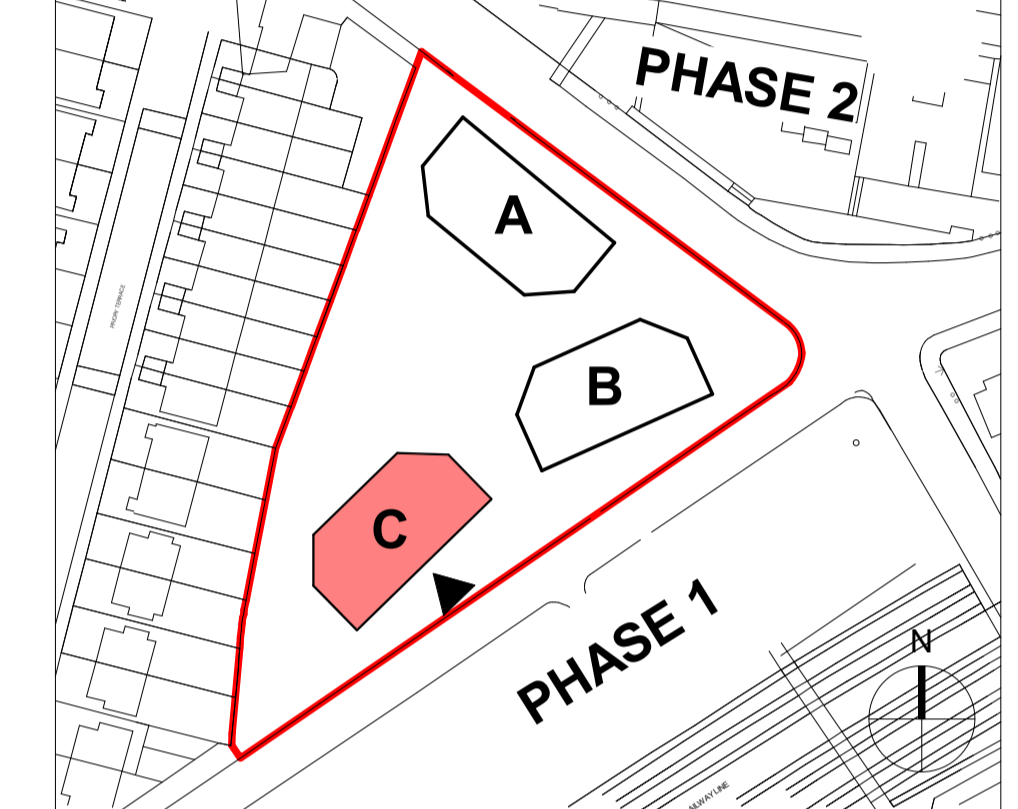
NAMING CONVENTION KEY

Project Code	Consultant	Volume	Level	Doc Type	Role	Drawing Number
XXXX	PTE	ZZ	ZZ	XX	A	00001

Package /Series

Drawing Notes

- Structural setting out based on Revit models received from Stanton on 28.07.23
- Chill setting out based on Revit models received from Stanton on 28.07.23
- MEPH setting out based on Revit models received from Stanton on 28.07.23
- Landscape setting out based on Revit models received from Stanton on 28.07.23
- Refer to consultant drawings, reports and specifications for further information to their disciplines
- All architectural drawings to be read in conjunction with latest Fire Report, produced by OFR
- All information to be read in conjunction with latest Acoustic Report, produced by PTE
- Contractor to verify all conditions, levels and dimensions on site and notify of any variations
- All items to comply with relevant planning approvals and conditions (to be discharged)
- Window and door openings to be confirmed on site by specialists
- Roof anchor points shown inductively - subject to specialist design and specification



MATERIALS KEY KEY PLAN

- B1 Brick - Rosado by Nelissen Bricks:** Stretcher bond, colour matched light mortar with flush joints
- B2 Brick - Rosado by Nelissen Bricks:** Vertical stretcher bond, colour matched light mortar with flush joints
- B3 Brick - Rosado by Nelissen Bricks:** Corduroy (every other brick course), colour matched light mortar with flush joints
- Z1 Main entrance facade:** Glazed brick, EH Smith Eden Green (or similar).
- Z2 Bolt-on balconies:** Sapphire or similar, PPC in RAL 3012 Beige Red
- Z3 Pink colour concrete balcony deck:** Smooth finish, pinky colour Keim Soldalit 9186, 50mm projection and ca. 327.5mm horizontal extension
- Z4 Pink colour precast banding:** Smooth finish, pinky colour Keim Soldalit 9186, 327.5 mm horizontal extension
- Z5 MVHR Air bricks:** Tilon FireSafe or equivalent equal approved, RAL 3012 Beige Red to sit within lower two courses of brick banding.
- M1 Balustrades to inset balconies at ground floor level:** 300mm high PPC vertical metal flats, RAL 3012 Beige Red on recessed 800mm brick plinth
- M2 Substation, Plant and Refuse Store louvers:** PPC aluminium, RAL 3012 Beige Red unless specified otherwise below (M10). External sealant to match metalwork.
- M4 ASHP acoustic screen enclosure:** Single skin brick wall, 3m high with steel cantilever columns to engineer's specification, stretcher bond brickwork, colour matched light mortar with flush joints. Bricks - Rosado by Nelissen Bricks
- M5 Rainwater pipes and hopperheads:** Martley Autec or similar, PPC circular aluminium RWPs, RAL 3012 Beige Red
- M6 Soffits to projecting balconies, ground floor inset balconies, commercial entrances and window heads:** PPC aluminium, RAL 3012 Beige Red. RAL 6020 to front and rear commercial entrances and portico.
- M7 Cycle Store doors and openings:** PPC 15x100mm frame to door leaf and opening, RAL 3012 Beige Red, 6x50mm full height vertical metal flats twisted at staggering heights. Solid backing panel to be included on openings facing the street, RAL 3012 Beige Red.
- M8 Main Entrance doors:** Schuco or similar, RAL 6020 MATT to match main entrance green glazed bricks (Z1)
- M9 Ancillary Space doors:** PPC metal louvre door system, Sunray Doors or equivalent equal approved, RAL 3012 Beige Red, external sealant to match metalwork colour. RAL 7038 to switch room and substation. External sealant to match metalwork colour
- M10 Refuse Store doors to Blocks B & C:** PPC metal louvre door system, Sunray Doors or equivalent equal approved, green RAL 6020 MATT to match main entrance green glazed bricks (Z1). External sealant to match metalwork colour
- M11 Commercial Cycle Store doors to Block A:** PPC metal louvre door system, Sunray Doors or equivalent equal approved, RAL 3012 Beige Red, external sealant to match metalwork colour
- M12 Gate Access to Switchroom and Substation:** PPC 15x100mm frame to door leaf and opening, RAL 3012 Beige Red, 12x35mm full height vertical metal flats twisted at staggering heights.
- M13 Fixed Railing:** PPC 15x100mm frame to door leaf and opening, RAL 3012 Beige Red, 12x35mm full height vertical metal flats twisted at staggering heights. Security railing: Timber composite / aluminium window: Nordan or similar, RAL 7047 Telegrey 4 with 190mm reveal PPC cill in RAL 3012 Beige Red
- W1 Commercial curtain walling with access doors:** 190mm reveal minimum, with 190mm reveal, frame to curtain walling RAL 7047 Telegrey
- C1 Parapet coping:** PPC aluminium coping, RAL 3012 Beige Red
- C2 Rosado Brick by Nelissen Bricks:** 15mm projecting / 10mm recessed brick detail
- C3 Bee Bricks:** Minimum of 10 bee bricks (Green and Blue Bee Brick or equivalent) to be provided across the site. To be sited in sheltered and sunny south facing walls at a minimum of 1m above ground overlooking vegetation

rev	date	description	drawn	checked
P1	05.03.23	Issued for stage authorisation	DC	DC
P2	18.08.23	Issued for planning conditions	DC	DC
P3	22.09.23	Planning Condition 03	DC	DC

S4 - FOR STAGE AUTHORISATION

Diespeker Wharf
38 Graham Street
London N1 8JX
020 7336 7777
forename.surname@pte.co.uk
@ptearchitects
www.pollardthomasedwards.co.uk

project	job number	drawn	scale	date created
Abbey Area Phase 3 - PI	19-049-PI	DC	As indicated@A1	Mar'23

Bay Study - Inset Balconies - Details Blocks A, B and C
ARP3- PTE- ZZ-ZZ-DR-A-34503 P3 S4

Pollard Thomas Edwards