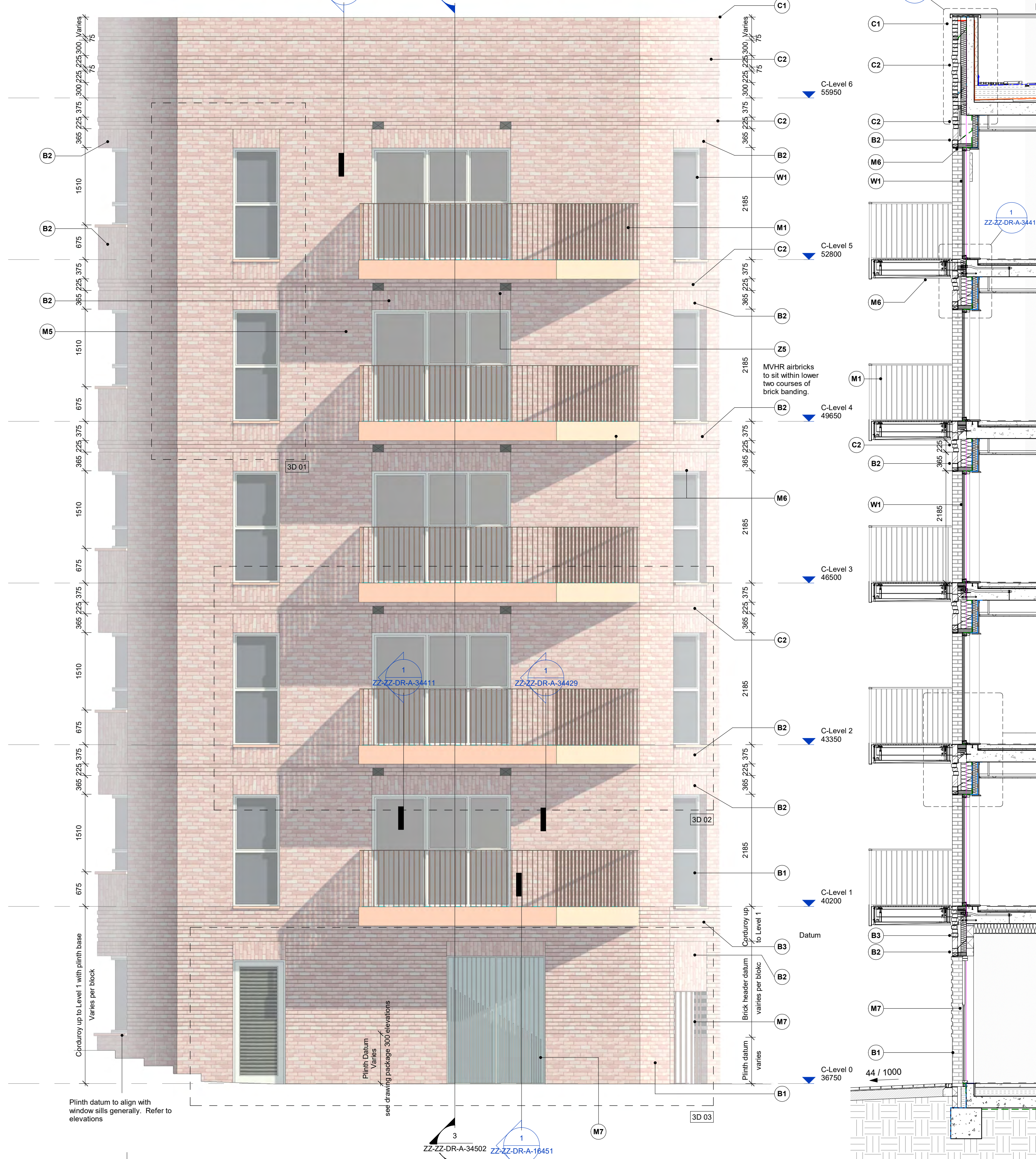
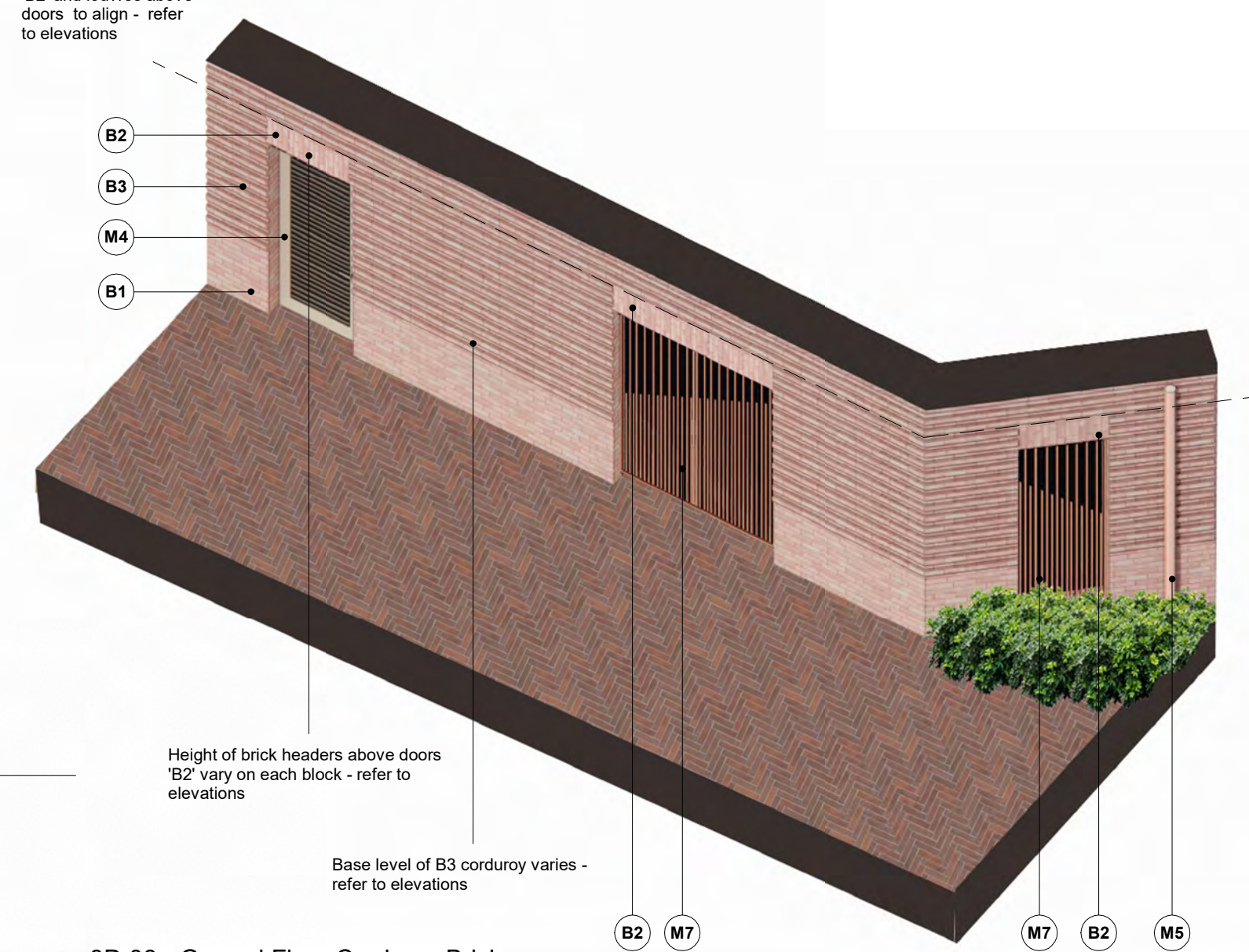


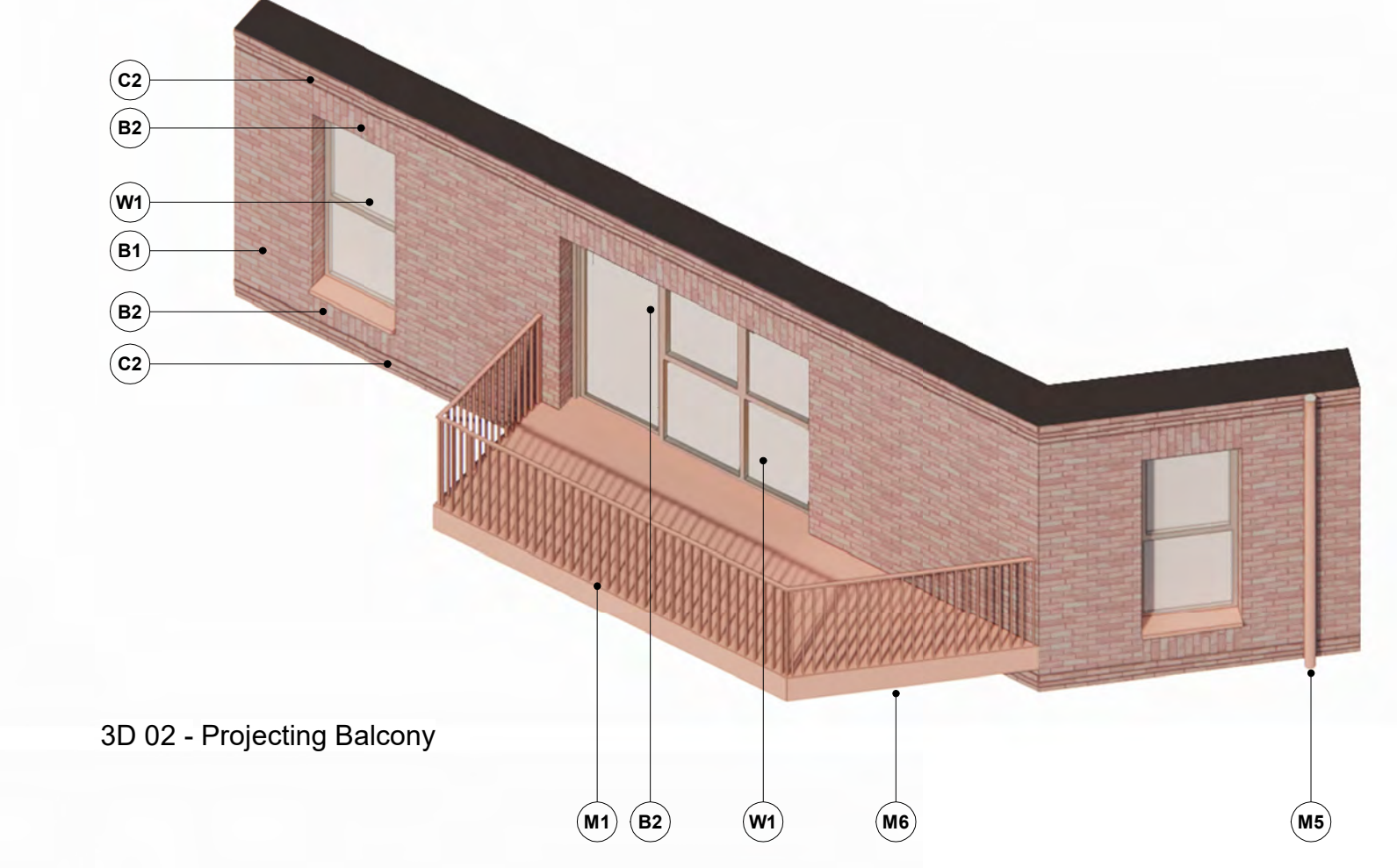
1 Block C - Projecting Balconies
Scale: 1: 50



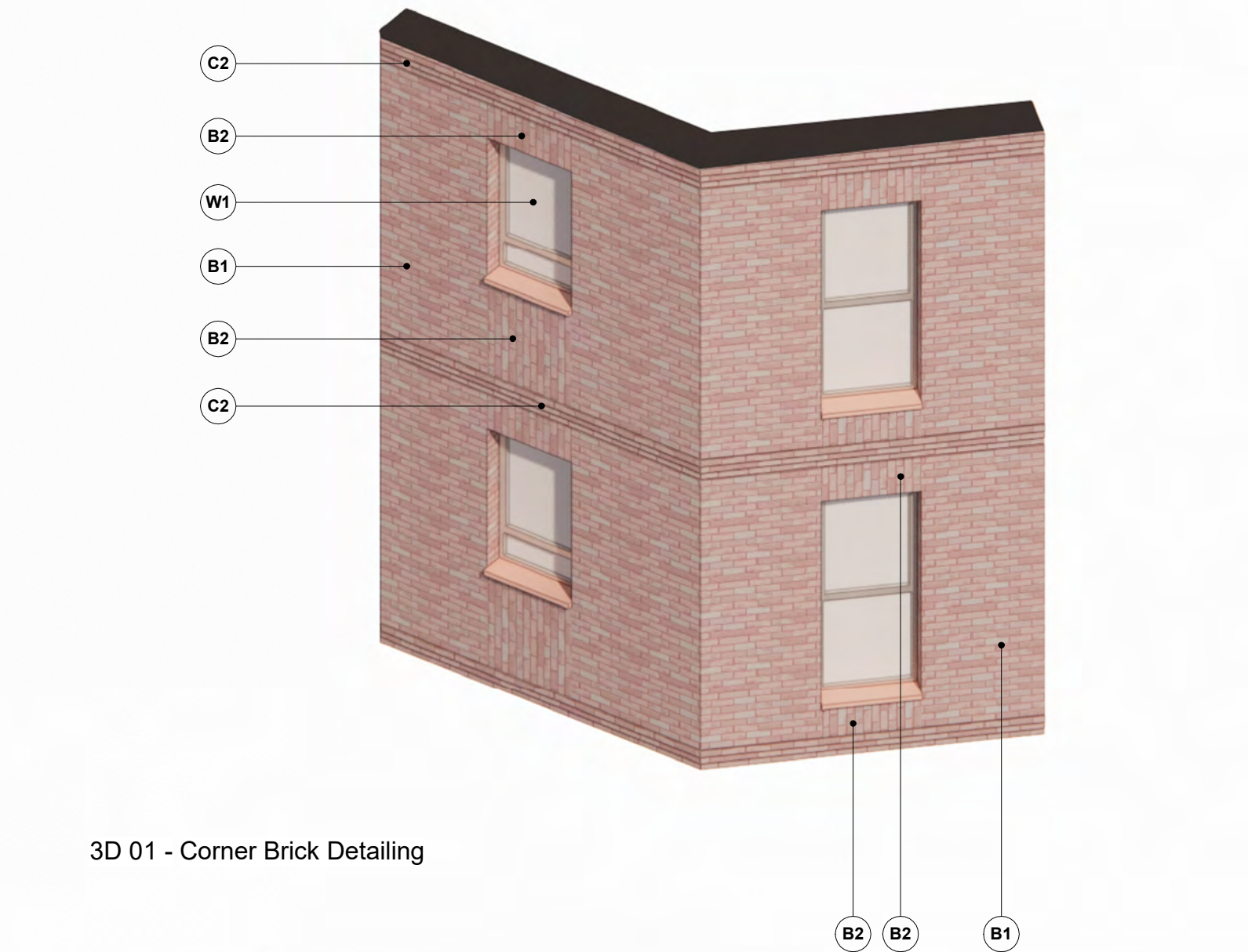
3 Projecting Balcony Block C
Scale: 1: 50



3D 03 - Ground Floor Corduroy Brick



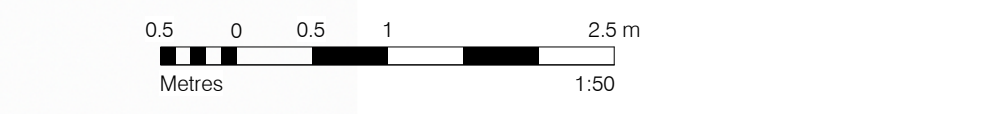
3D 02 - Projecting Balcony



3D 01 - Corner Brick Detailing

GENERAL NOTES:
This drawing is © 2019 Pollard Thomas Edwards LLP (PTE).
Use figured dimensions only. **DO NOT SCALE**.
All dimensions are in millimetres unless noted otherwise.
This drawing must be read in conjunction with all other relevant drawings and specifications from the Architect and other consultants.
If in doubt, ask.

SETTING OUT NOTES:
All setting out to be confirmed on site prior to construction - any discrepancy must be immediately reported to the Architect.
All setting out to face of structure or to grid. All partitions set out to studwork or structure.
For setting out and specification of M&E services refer to M&E Consultants documents.
For setting out and specification of structure refer to Structural Engineer's documents.

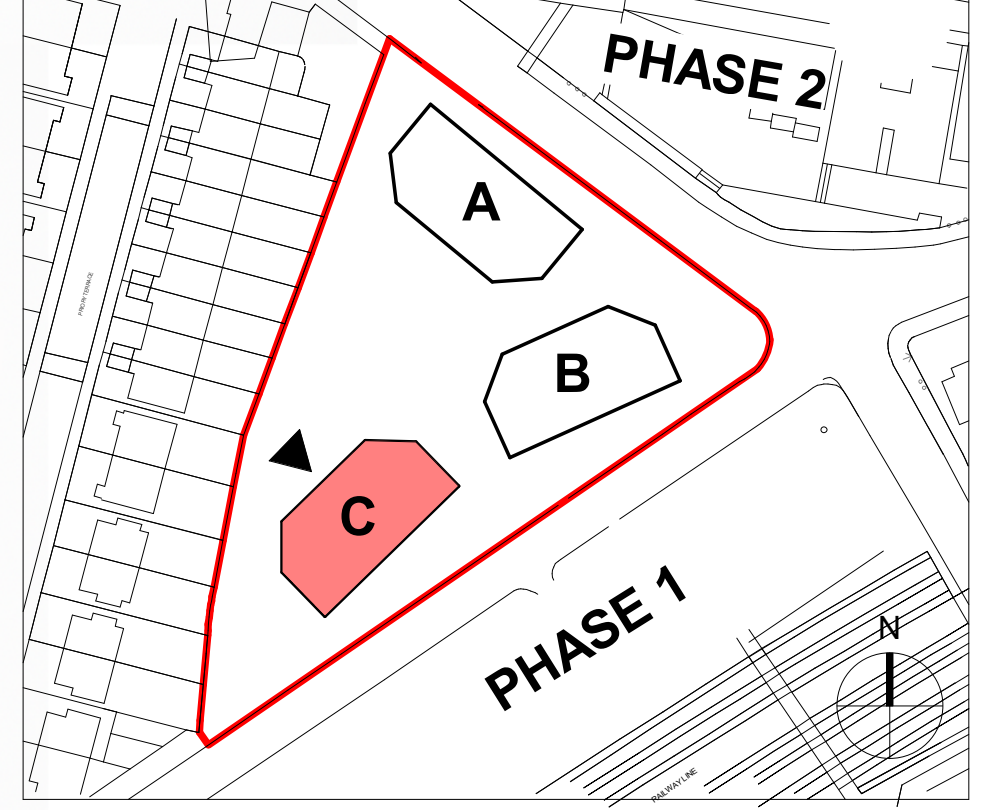


NAMING CONVENTION KEY

Project Code	Consultant	Volume	Level	Doc Type	Role	Drawing Number
XXXX	PTE	ZZ	ZZ	XX	A	00001

Package /Series

- Drawing Notes**
- Structural setting-out based on Revit models received from Stanley on 28.07.23
 - Coil setting-out based on Revit models received from Stanley on 28.07.23
 - MEPH setting-out based on Revit model received from OCSC on 25.07.23
 - Landscape setting-out based on Revit model received from Falcin on 02.03.23
 - Refer to consultant drawings, reports and specifications for further information to their disciplines
 - All information to be read in conjunction with latest Fire Report, produced by OFR
 - All information to be read in conjunction with latest Acoustic Report, produced by RBA
 - All architectural drawings to be read in conjunction with Architecture Specification, produced by PTE
 - All details subject to Building Warranty and Building Control approval
 - Contractor to verify all conditions, levels and dimensions on site and notify of any variations
 - All items to comply with relevant planning approvals and conditions (to be discharged)
 - Window and door openings to be confirmed on site by specialists
 - Roof anchor points shown indicatively - subject to specialist design and specification



- MATERIALS KEY**
- KEY PLAN**
- B1 **Brick - Rosado by Nelissen Bricks:**
Stretchier bond, colour matched light mortar with flush joints
- B2 **Brick - Rosado by Nelissen Bricks:**
Vertical stretchier bond, colour matched light mortar with flush joints
- B3 **Brick - Rosado by Nelissen Bricks:**
Corduroy (every other brick course), colour matched light mortar with flush joints
- Z1 **Main entrance façade:**
Glazed brick, EH Smith Eden Green (or similar).
- Z2 **Bolt-on balconies:**
Sapphire or similar, PPC in RAL 3012 Beige Red
- Z3 **Pink colour concrete balcony deck:**
Smooth finish, pinky colour Keim Soldalit 9186, 50mm projection and ca. 327.5mm horizontal extension
- Z4 **Pink colour precast banding:**
Smooth finish, pinky colour Keim Soldalit 9186, 327.5 mm horizontal extension
- Z5 **MVHR Air bricks:**
Tilon FireSafe or equivalent equal approved, RAL 3012 Beige Red to sit within lower two courses of brick banding.
- M1 **Balustrades to inset / projecting balconies:**
PPC vertical metal flats, RAL 3012 Beige Red
- M2 **Balustrades to inset balconies at ground floor level:**
300mm high-PPC vertical metal flats, RAL 3012 Beige Red on recessed 800mm brick plinth
- M3 **Substation, Plant and Refuse Store louvers:**
PPC aluminium, RAL 3012 Beige Red unless specified otherwise below (M10). External sealant to match metalwork.
- M4 **ASHP acoustic screen enclosure:**
Single skin brick wall, 3m high with steel cantilever columns to engineer's specification, stretchier bond brickwork, colour matched light mortar with flush joints. Bricks - Rosado by Nelissen Bricks
- M5 **Rainwater pipes and hopperheads:**
Marley Alutec or similar, PPC circular aluminium RWPs, RAL 3012 Beige Red
- M6 **Soffits to projecting balconies, groundtop floor inset balconies, commercial entrances and window heads:**
PPC aluminium, RAL 3012 Beige Red. RAL 6020 to front and rear communal entrances and portico.
- M7 **Cycle Store doors and openings:**
PPC 15x100mm frame to door leaf and opening, RAL 3012 Beige Red. 8x50mm full height vertical metal flats twisted at staggering heights. Solid backing panel to be included on openings facing the street, RAL 3012 Beige Red.
- M8 **Main Entrance doors:**
Schuco or similar, RAL 6020 MATT to match main entrance green glazed bricks (Z1)
- M9 **Ancillary Space doors:**
PPC metal louvred door system, Sunray Doors or equivalent equal approved, RAL 3012 Beige Red, external sealant to match metalwork colour.
- M10 **Refuse Store doors to Blocks B & C:**
PPC metal louvred door system, Sunray Doors or equivalent equal approved, green RAL 6020 MATT to match main entrance green glazed bricks (Z1). External sealant to match metalwork colour.
- M11 **Commercial Cycle Store doors to Block A:**
PPC metal louvred door system, Sunray Doors or equivalent equal approved, RAL 3012 Beige Red, external sealant to match metalwork colour.
- M12 **Gate Access to Switchroom and Substation:**
PPC 15x100mm frame to door leaf and opening, RAL 3012 Beige Red. 12x35mm full height vertical metal flats twisted at staggering heights.
- M13 **Fixed Railing:**
PPC 15x100mm frame to door leaf and opening, RAL 3012 Beige Red. 12x35mm full height vertical metal flats twisted at staggering heights. Security rating:
- W1 **Timber composite / aluminium window:**
Nordan or similar, RAL 7047 Telegrey 4 with 190mm reveal PPC cill in RAL 3012 Beige Red
- W2 **Commercial curtain walling with access doors:**
150mm reveal minimum, frame to curtain walling RAL 7047 Telegrey
- C1 **Parapet coping:**
PPC aluminium coping, RAL 3012 Beige Red
- C2 **Rosado Brick by Nelissen Bricks:**
15mm projecting / 10mm recessed brick detail
- C3 **See Bricks:**
Minimum of 10 bee bricks (Green and Blue Bee Brick or equivalent) to be provided across the site. To be sited in sheltered and sunny south facing walls at a minimum of 1m above ground overlooking vegetation

S4 - FOR STAGE AUTHORISATION

Diespeker Wharf
38 Graham Street
London N1 8JX
020 7336 7777
forename.surname@pte.co.uk
@ptearchitects
www.pollardthomasedwards.co.uk

**Pollard
Thomas
Edwards**

project	job number	drawn	scale	date created
Abbey Area Phase 3 - PI	19-049-PI	DC	As indicated@A1	Mar'23
drawing title	drawing number	revision	substant	
Bay Study - Projecting Balconies Blocks A, B and C	ARP3- PTE- ZZ-ZZ-DR-A-34502	P3	S4	