

GENERAL NOTES:
This drawing is © 2019 Pollard Thomas Edwards LLP (PTE).
Use figured dimensions only. **DO NOT SCALE.**
All dimensions are in millimetres unless noted otherwise.
This drawing must be read in conjunction with all other relevant drawings and specifications from the Architect and other consultants.
If in doubt, ask.

SETTING OUT NOTES:
All setting out to be confirmed on site prior to construction - any discrepancy must be immediately reported to the Architect.
All partitions set out to studwork or structure.
For setting out and specification of M&E services refer to M&E Consultants documents.
For setting out and specification of structure refer to Structural Engineer's documents.



NAMING CONVENTION KEY

Project Code	Consultant	Volume	Level	Doc Type	Role	Drawing Number
XXXX	-	PTE	-	ZZ	-	ZZ
				XX	-	A
						00001

Package /Series

Drawing Notes

- Structural setting-out based on Revit models received from Stantec on 28.07.23
- Coil setting-out based on Revit models received from Stantec on 28.07.23
- MEPH setting-out based on Revit models received from OCSG on 25.07.23
- Landscape setting-out based on Revit models received from Fankh on 02.03.23
- Refer to consultant drawings, reports and specifications for further information to their disciplines
- All information to be read in conjunction with latest Fire Report, produced by OPR
- All information to be read in conjunction with latest Acoustic Report, produced by RBA
- All architectural drawings to be read in conjunction with Architectural Specification, produced by PTE
- All details subject to Building Warranty and Building Control approval
- Contractor to verify all conditions, levels and dimensions on site and notify of any variations
- All items to comply with relevant planning approvals and conditions (to be discharged)
- Window and door openings to be confirmed on site by specialists
- Roof anchor points shown indicatively - subject to specialist design and specification

Symbols Key

FFL	Finished floor level	B5	Grid reference	---	Slab edge
SSL	Structural slab level	E2	Wall type	---	Cavity Barrier
RWP	Rainwater pipe / outlet	F2	Floor type	---	PV Panel
OF	Overflow pipe	R2	Roof type	---	Gravel Ballast
SVP	Soil vent pipe	Type K	Plot number	---	Window Reference
SS	Stub stack	8.03.03	Plot type	---	Window Type
MJ	Movement joint	8.03.03	Plot type	---	Door Reference
MVHR	MVHR Airbrick	8.03.03	Plot type	---	Door Type
PB	Premises Information Box	8.03.03	Plot type	---	Wardrobe Reference

To be read in conjunction with 05 Vertical Brick Setting Out and 34 Bay Studies

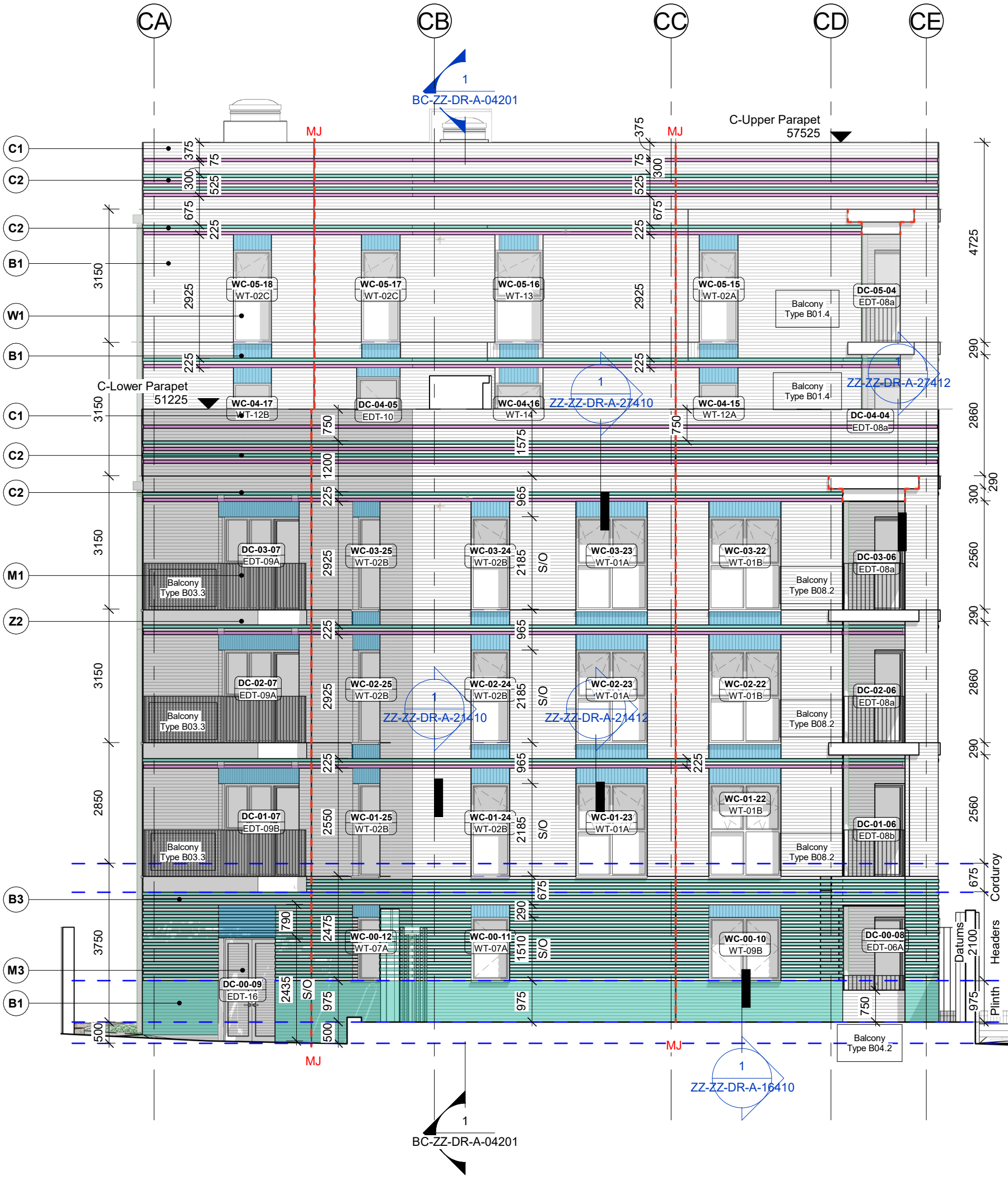
Projecting brick course	15mm projecting stretcher course
Recessed brick course	10mm recessed stretcher course
Brick headers	Vertical stretcher course staggered 75mm. Mortar spacing adjusted to suit structural openings and avoid cut bricks above/below windows.
Glazed brick	Glazed brick to front entrance, rear entrance and garden portico

MATERIALS KEY

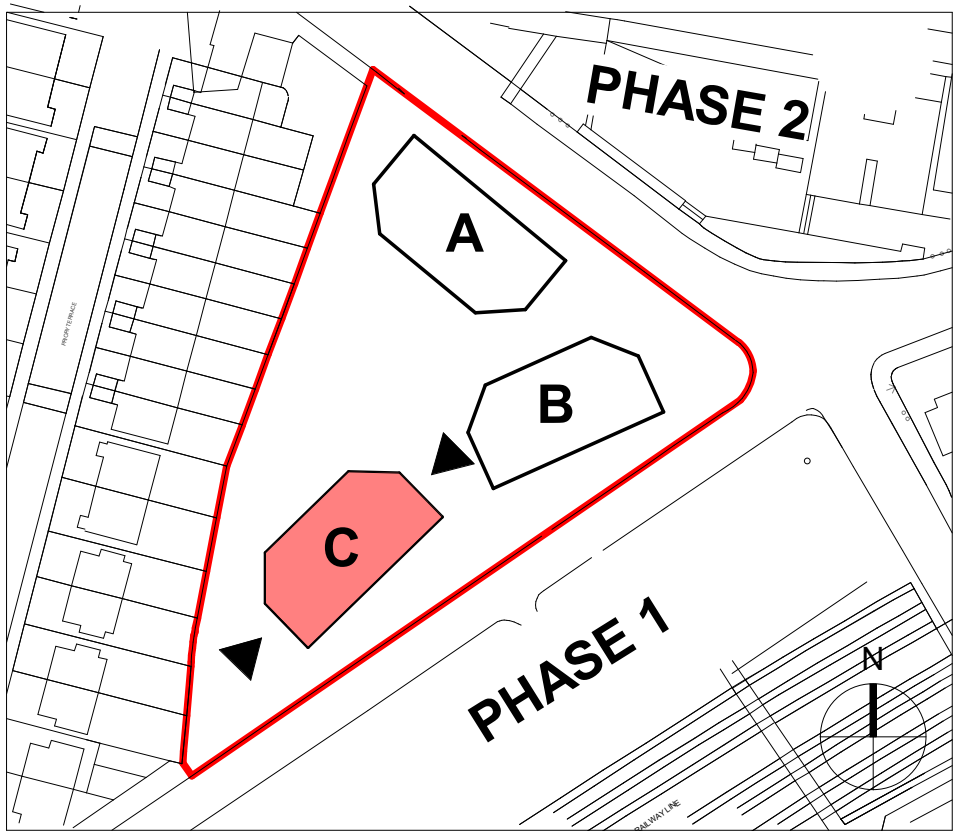
- B1 **Brick - Rosado by Neilsen Bricks:**
Stretcher bond, colour matched light mortar with flush joints
- B2 **Brick - Rosado by Neilsen Bricks:**
Vertical stretcher bond, colour matched light mortar with flush joints
- B3 **Brick - Rosado by Neilsen Bricks:**
Corduroy (every other brick course), colour matched light mortar with flush joints
- Main entrance façade:**
Glazed brick, EH Smith Eden Green (or similar).
- Bolt-on balconies:**
Sapphire or similar, PPC in RAL 3012 Beige Red
- Z3 **Pink colour concrete balcony deck:**
Specification tbc, pinky colour tbc, 50mm projection and ca. 327.5mm horizontal extension
- Z4 **Pink colour precast banding:**
Specification tbc, pinky colour tbc, 327.5 mm horizontal extension
- Z5 **MVHR Air bricks:**
Titan FireSafe or equivalent equal approved, RAL 3012 Beige Red to sit within lower two courses of brick banding.
- M1 **Balustrades to inset / projecting balconies:**
PPC vertical metal flats, RAL 3012 Beige Red
- M2 **Balustrades to inset balconies at ground floor level:**
300mm high PPC vertical metal flats, RAL 3012 Beige Red on recessed 800mm brick plinth
- M3 **Substation, Plant and Refuse Store louvers:**
PPC aluminium, RAL 3012 Beige Red unless specified otherwise below (M10). External sealant to match metalwork.
- M4 **ASHP acoustic screen enclosure:**
Single skin brick wall, 3m high with steel cantilever columns to engineer's specification, stretcher bond brickwork, colour matched light mortar with flush joints. Bricks - Rosado by Neilsen Bricks
- M5 **Rainwater pipes and hopperheads:**
Marley Autec or similar, PPC circular aluminium RWP's, RAL 3012 Beige Red
- M6 **Soffits to projecting balconies, groundfloor floor inset balconies, commercial entrances and window heads:**
PPC aluminium, RAL 3012 Beige Red
- M7 **Cycle Store doors and openings:**
PPC 15x100mm frame to door leaf and opening, RAL 3012 Beige Red. 8x50mm full height vertical metal flats twisted at staggering heights. Solid backing panel to be included on openings facing the street, RAL 3012 Beige Red.
- M8 **Main Entrance doors:**
Schuco or similar, RAL 6020 MATT to match main entrance green glazed bricks (Z1)
- M9 **Ancillary Space doors:**
PPC metal louvre door system, Sunray Doors or equivalent equal approved, RAL 3012 Beige Red, external sealant to match metalwork colour.
- M10 **Refuse Store doors to Blocks B & C:**
PPC metal louvre door system, Sunray Doors or equivalent equal approved, green RAL 6020 MATT to match main entrance green glazed bricks (Z1). External sealant to match metalwork colour
- M11 **Commercial Cycle Store doors to Block C:**
PPC metal louvre door system, Sunray Doors or equivalent equal approved, RAL 3012 Beige Red, external sealant to match metalwork colour
- M12 **Gate Access to Switchroom and Substation**
PPC 15x100mm frame to door leaf and opening, RAL 3012 Beige Red. 12x35mm full height vertical metal flats twisted at staggering heights.
- M13 **Fixed Railing**
PPC 15x100mm frame to door leaf and opening, RAL 3012 Beige Red. 12x35mm full height vertical metal flats twisted at staggering heights. Security rating:
- W1 **Timber composite / aluminium window:**
Idealcomb or similar, RAL 7047 Telegrey 4 with 190mm reveal PPC cill in RAL 3012 Beige Red
- W2 **Commercial curtain walling with sliding door:**
Specification tbc, with 190mm reveal, frame to curtain walling RAL 7047 Telegrey
- C1 **Parapet coping:**
PPC aluminium coping, RAL 3012 Beige Red
- C2 **Rosado Brick by Neilsen Bricks:**
15mm projecting / 10mm recessed brick detail
- C3 **Bee Bricks:**
Minimum of 10 bee bricks (Green and Blue Bee Brick or equivalent) to be provided across the site. To be sited in sheltered and sunny south facing walls at a minimum of 1m above ground overlooking vegetation



1 Block C Side A Elevation
Scale: 1 : 100



2 Block C Side B Elevation
Scale: 1 : 100



KEY PLAN

S4 - FOR STAGE AUTHORISATION

Diespeker Wharf
38 Graham Street
London N1 8JX
020 7336 7777
forename.surname@ptea.co.uk
@ptearchitects
www.pollardthomasedwards.co.uk

Pollard Thomas Edwards

project	job number	drawn	scale	date created
Abbey Area Phase 3 - PI	19-049-PI	LN	1 : 100@A1	Nov'22
drawing title	drawing number	revision	substitut	
Block C Elevations - Sheet 3	ARP3- PTE- BC-ZZ-DR-A-05303	P4	S4	