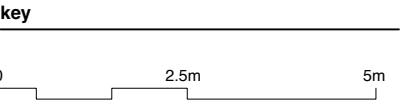


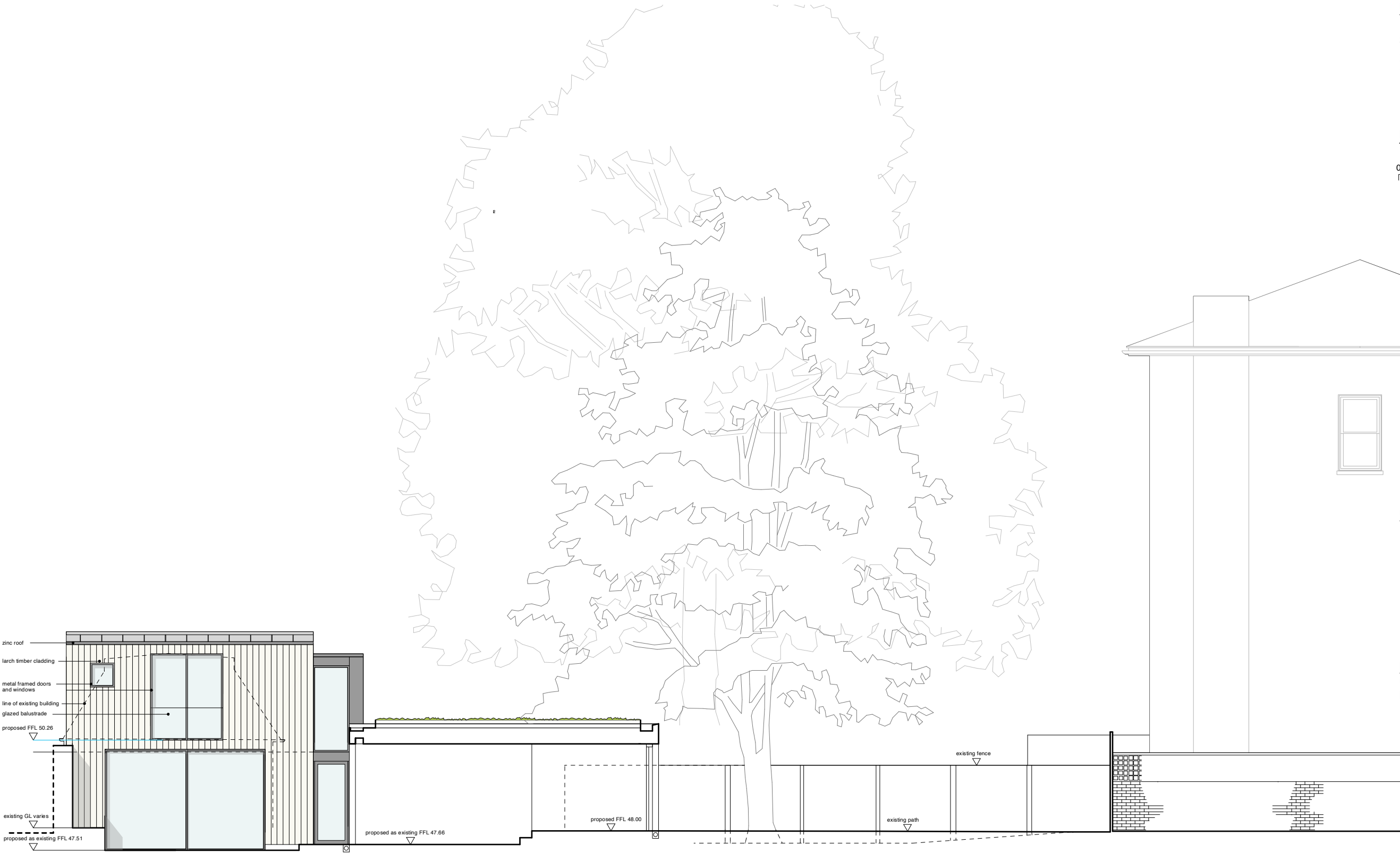
**notes**

Do not scale, except for planning purposes.  
All dimensions to be checked on site and verified with the architect prior to construction.  
Any discrepancies or uncertainties regarding this drawing to be discussed with the architect prior to construction.  
Copyright © Theis and Khan Architects Ltd. All rights reserved



**revision notes**

| planning |          |                     |
|----------|----------|---------------------|
| revision | date     | comment             |
| p1       | 18/06/23 | Issued for planning |



01 | South elevation Long site Section AA  
scale 1:100

**THEIS  
+KHAN**

11-13 Lonsdale Gardens  
Tunbridge Wells  
Kent TN11 1NU  
+44 (0)1892 518094  
mail@theisandkhan.com  
www.theisandkhan.com

project  
22b harley road

drawing  
South elevation Long site Section AA  
**proposed**

| scale      | date           | revision |
|------------|----------------|----------|
| 1:100 @ A3 | august 22      |          |
| job number | drawing number | revision |
| 1169       | 122            | p1       |