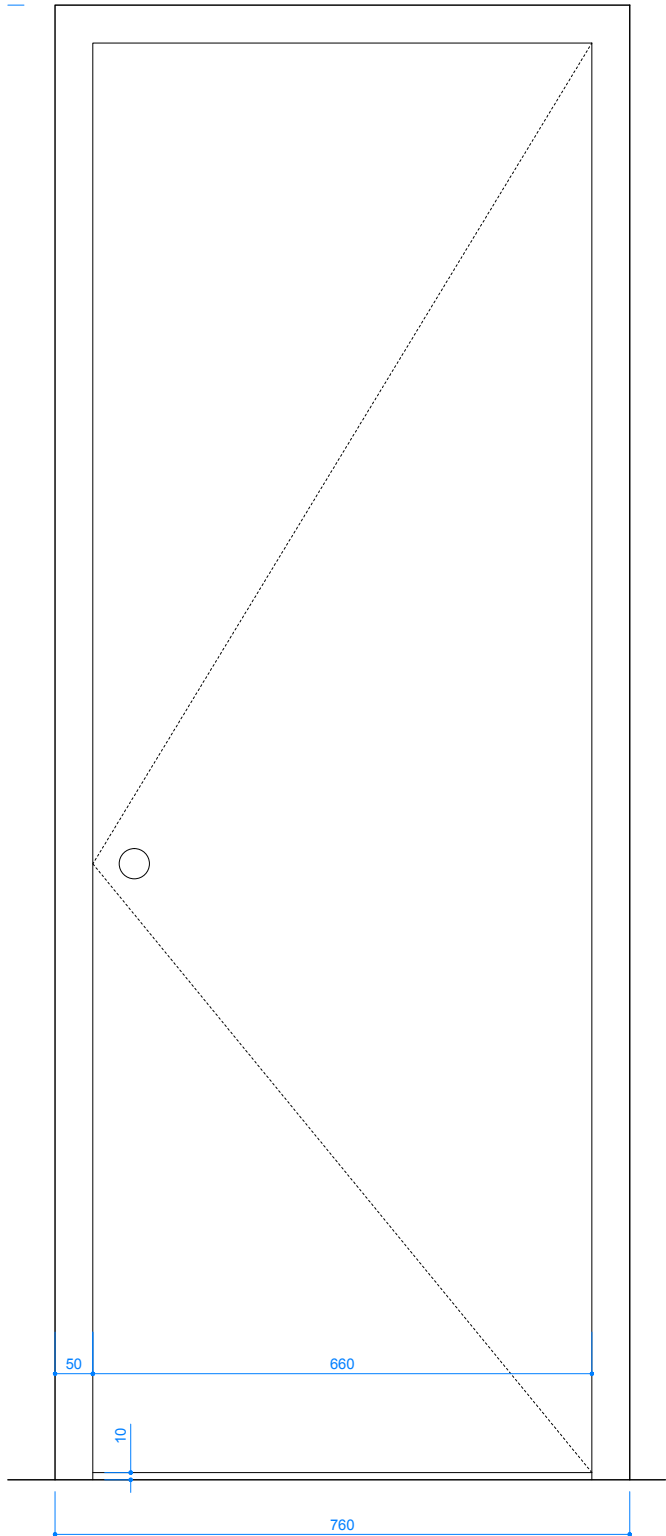
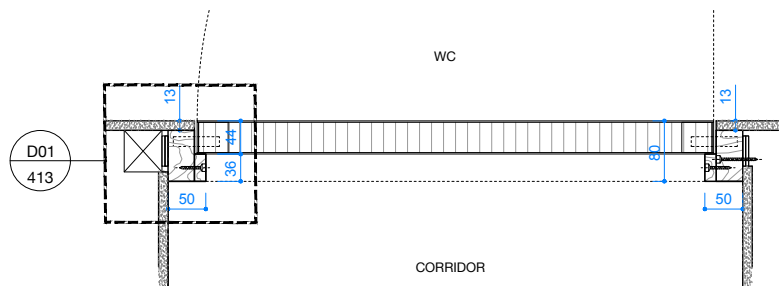


Section 1:10



Corridor Elevation 1:10

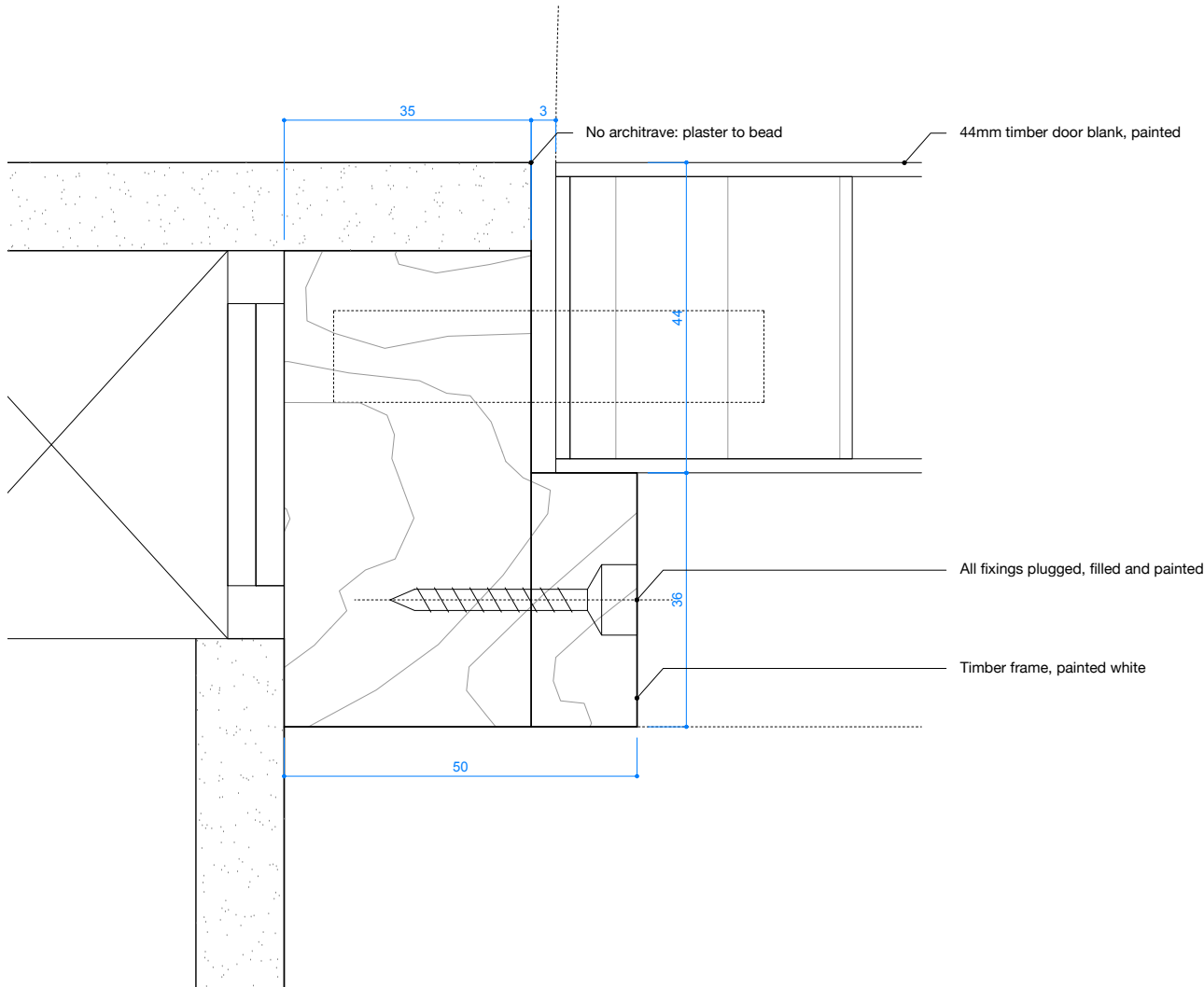


Ground Floor Plan 1:10

TYPE-05

Flush Solid Timber Door with Flush Detailing

Numbers: D-G-06



D01: Jamb / Architrave Details 1:1

- Notes
- Do not scale drawings
  - All dimensions in mm
  - Errors to be reported immediately to the Designer
  - To be read in conjunction with all the relevant Designers' and Engineers' drawings
  - All dimensions to be checked and verified on site before proceeding
  - Structure shown is indicative only; for structural layouts / details refer to Engineers' drawings

Rev	Revision Notes	Date
<div>CB A</div> <div>Clementine Blokemore Architects</div> <div>clem@clementineblokemore.com +44 (0)7580 193709 157 Middleton Road, London E8 4LL</div>		
PROJECT NAME 4 Leverton Street		PROJECT NO. 013
PROJECT ADDRESS 4 Leverton Street, London NW5 2PJ		
RIBA STAGE 05	PLANNING CONDITIONS	
DRAWN BY PF	CHECKED BY CB	SCALE@A3 1:1/10
TITLE Internal Door Details 02: DG-06		
DATE 26.09.2023	DRAWING NO. 4LS - 413	REVISION NO. P1