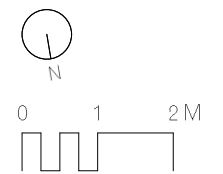
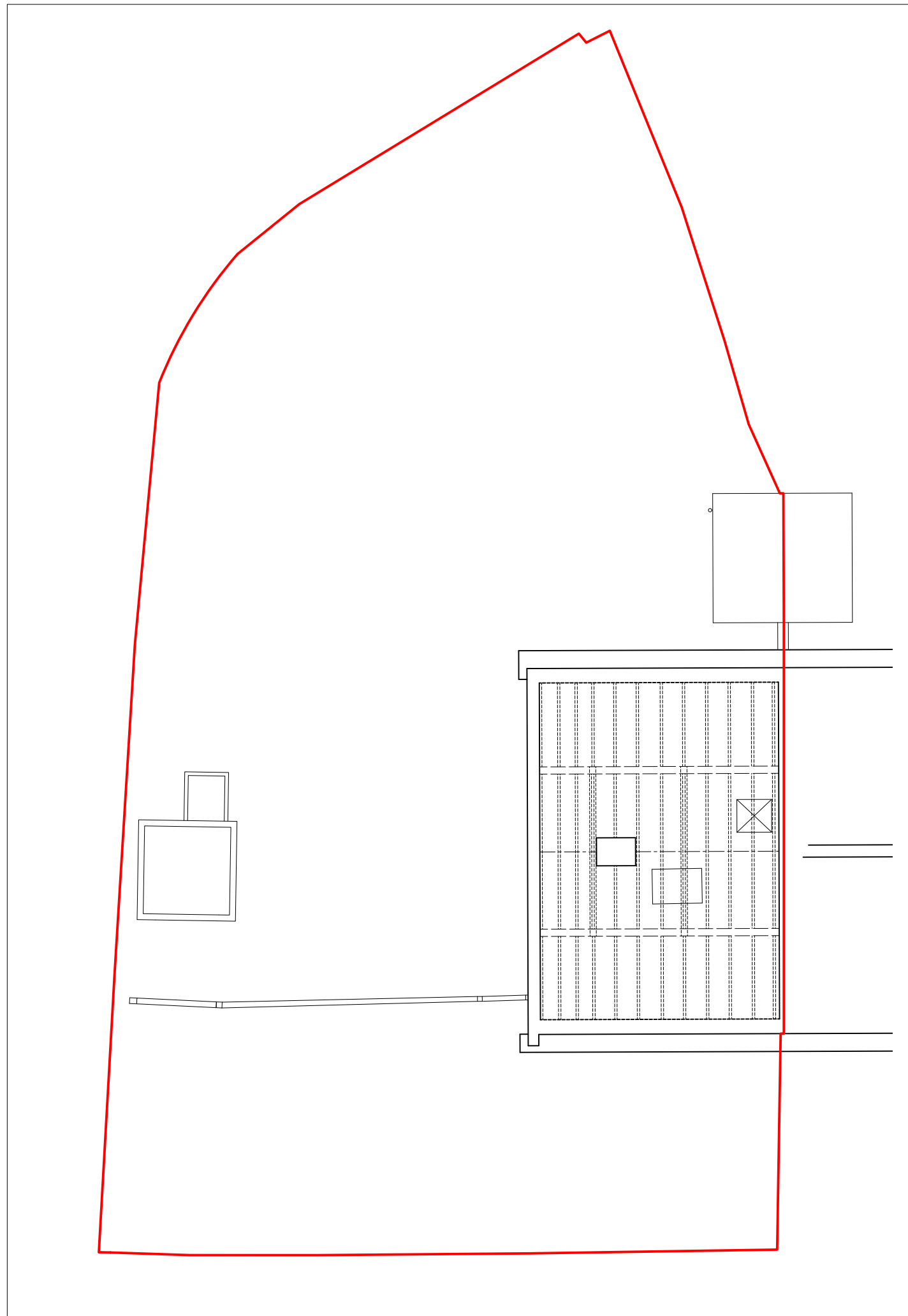


Important note

All dimensions in millimetres. Where dimensions are not given, drawings must not be scaled and the matter referred back to Charlton Brown Architects.

All dimensions and conditions are to be checked on site by the contractor prior to preparing drawings or commencing any work. The contractor is responsible for checking that there is no conflict between site dimensions and drawn dimensions.

In the event of any detail or dimensional conflict between Charlton Brown Architects drawings, the matter must be referred back to Charlton Brown Architects for clarification



Rev	Date	Details	By

Charlton Brown Architecture & Interiors

The Belvedere, 2 Back Lane, Hampstead, London, NW3 1HL
 Telephone +44(0)20 7794 1234
 Email office@charltonbrown.com
 Website www.charltonbrown.com

Client
 Alma Flores and Jeremie Berton

Project
 13 Kemplay Road

Drawing Title
 Existing plan: Second floor

Date	Drawn	Checked
27/07/2023	JK	DB

Scale
 1:100

Issue Status
 For Planning

Project Number	Drawing Number	Revision
1923	EX-00-102	