

KITCHEN FRESH AIR TO COME OUT ONTO THE FLAT ROOF AND TERMINATE TOWARDS THE REAR

1 NO ATTENUATORS ACOUSTICA R02-2-600 SILENCER INSTALLED AFTER THE FAN UNIT

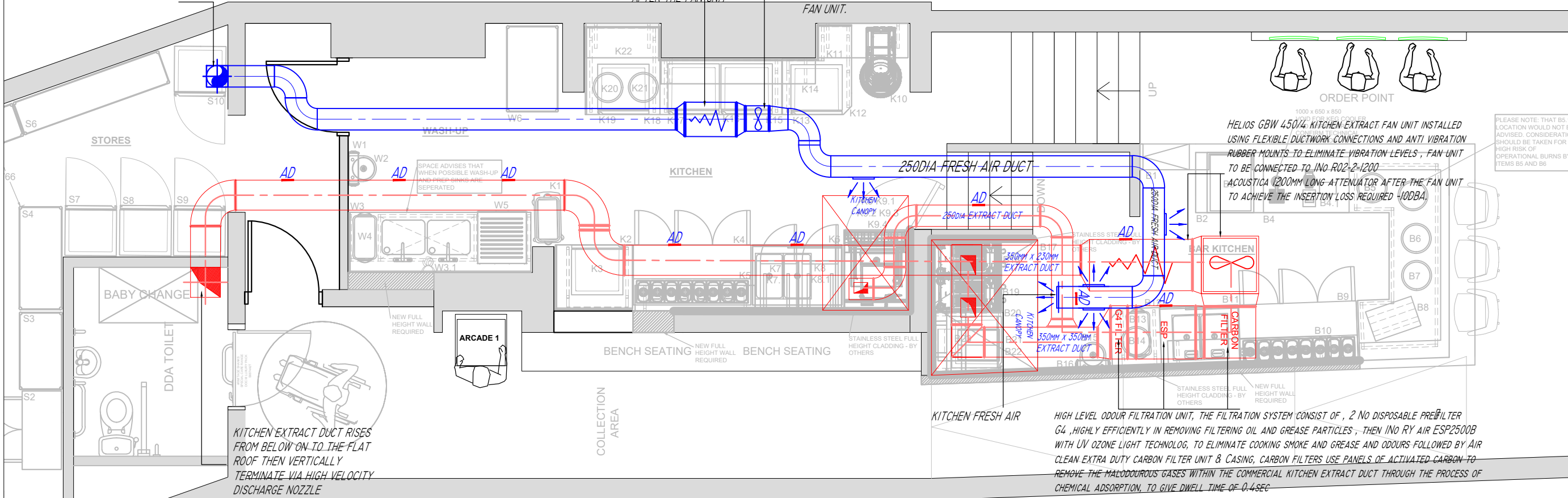
ETALINE 250 E2 01 FAN UNIT TO BE MOUNTED USING ANTI VIBRATION RUBBER MOUNTINGS TO ELIMINATE ANY NOISE AND VIBRATION LEVELS, THE FAN UNIT.

HELIOS GBW 450/4 KITCHEN EXTRACT FAN UNIT INSTALLED USING FLEXIBLE DUCTWORK CONNECTIONS AND ANTI VIBRATION RUBBER MOUNTS TO ELIMINATE VIBRATION LEVELS, FAN UNIT TO BE CONNECTED TO INO R02-2-1200 ACOUSTICA 1200MM LONG ATTENUATOR AFTER THE FAN UNIT TO ACHIEVE THE INSERTION LOSS REQUIRED -10DBA

PLEASE NOTE THAT B5.1 LOCATION WOULD NOT BE ADVISED. CONSIDERATION SHOULD BE TAKEN FOR THE HIGH RISK OF OPERATIONAL BURNS BY ITEMS B5 AND B6

KITCHEN EXTRACT DUCT RISES FROM BELOW ON TO THE FLAT ROOF THEN VERTICALLY TERMINATE VIA HIGH VELOCITY DISCHARGE NOZZLE

HIGH LEVEL ODOUR FILTRATION UNIT, THE FILTRATION SYSTEM CONSIST OF, 2 NO DISPOSABLE PRE-FILTER G4, HIGHLY EFFICIENTLY IN REMOVING FILTERING OIL AND GREASE PARTICLES, THEN INO RY AIR ESP2500B WITH UV OZONE LIGHT TECHNOLOG, TO ELIMINATE COOKING SMOKE AND GREASE AND ODOURS FOLLOWED BY AIR CLEAN EXTRA DUTY CARBON FILTER UNIT & CASING, CARBON FILTERS USE PANELS OF ACTIVATED CARBON TO REMOVE THE MALODOUROUS GASES WITHIN THE COMMERCIAL KITCHEN EXTRACT DUCT THROUGH THE PROCESS OF CHEMICAL ADSORPTION, TO GIVE DWELL TIME OF 0.4 SEC



Note:
Project Title: I am Doner - Camden - Proposed HVAC Route Plan
Drawing Number: I am Doner - Camden - 01 - Proposed HVAC Route Plan - REV A
Scale: 1:50 @ A3
Date: 28/09/2023



Commercial kitchen and HVAC System Specialists  
Established 2005

Ability House, Unit 129,  
121 Brooker Road,  
Waltham Abbey EN9 1JH  
Tel: +44 (0) 20 33082 936  
www.fanrescue.co.uk