

Photo 1



Photo 2



Photo 3



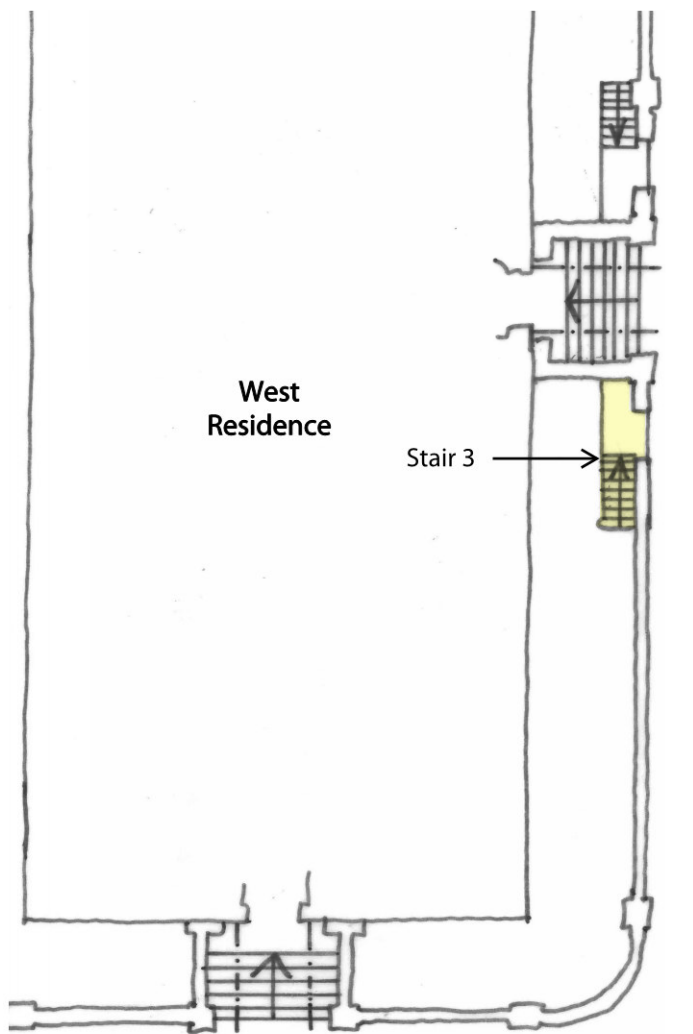
Photo 4



Photo 5

notes

1. This drawing is to be read in conjunction with all relevant Architect's and Engineer's drawings and the specification.



Key Plan

NOT FOR CONSTRUCTION

| | | | |
|---|----------|--------------------|-----|
| A | 11.09.23 | ISSUED FOR COMMENT | MSp |
| - | 01.09.23 | ISSUED FOR COMMENT | MSp |

job

**BRITISH MUSEUM
PHASE 6 FABRIC REPAIRS
STAIRCASES**

title

**REPAIRS TO STAIR 3
OPTION B**

| | |
|---------|-----------------------|
| drawn | checked |
| MSp | RB |
| date | scale (original - A1) |
| AUG '23 | 1:10 |

Alan Baxter

75 Cowcross Street London EC1M 6EL
tel 020 7250 1555
email aba@alanbaxter.co.uk
www.alanbaxter.co.uk

| | |
|-------------------|----------|
| drg. no. | rev. |
| 1910/20/11 | A |