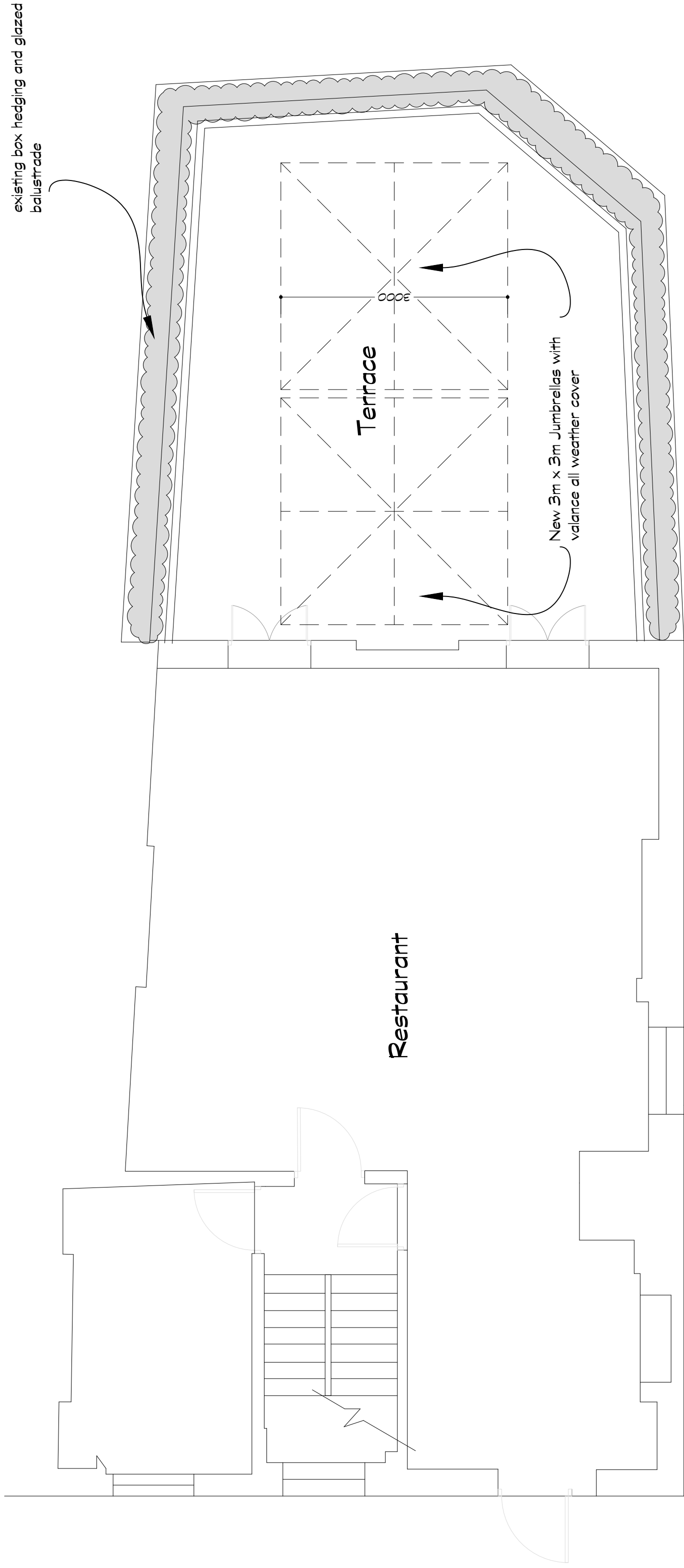
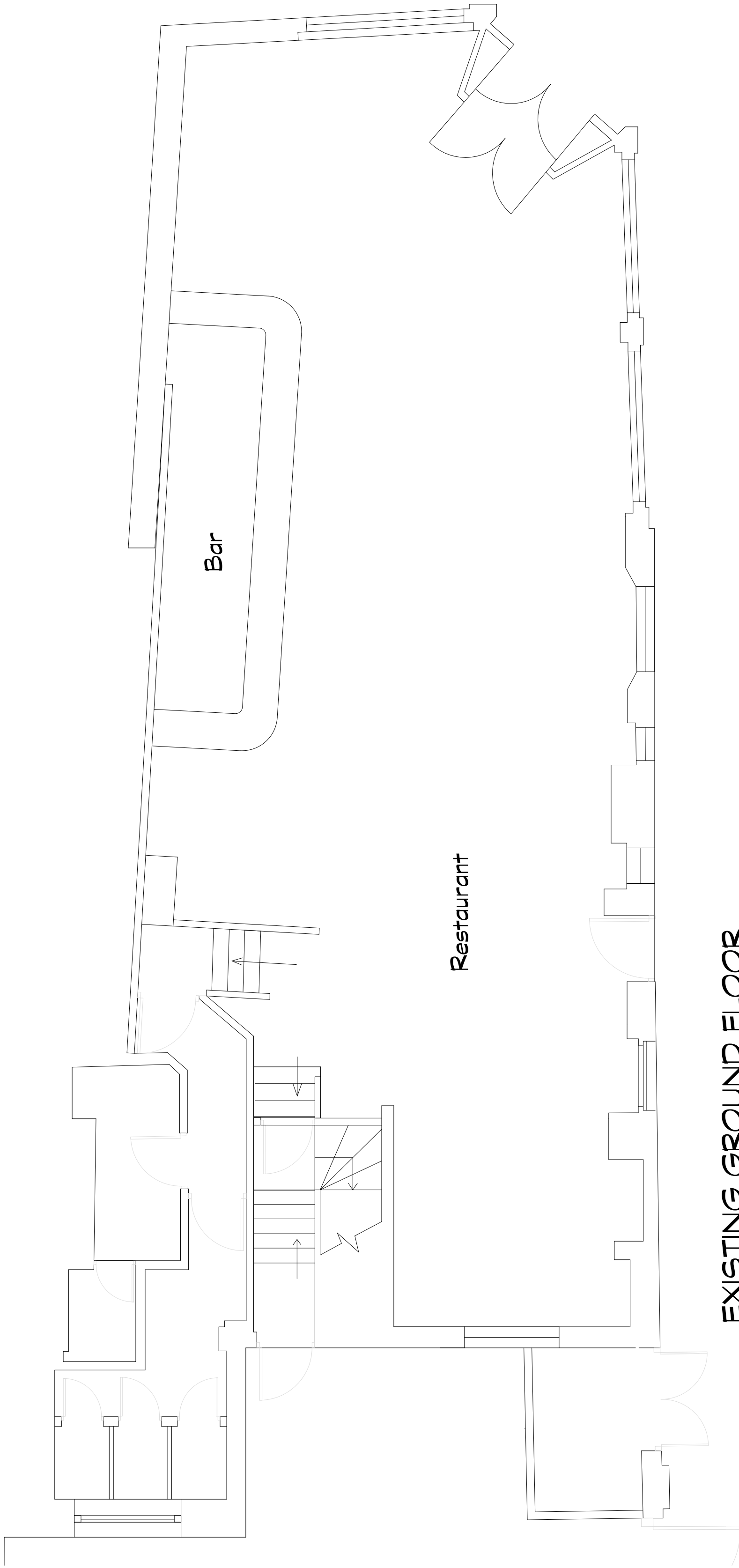


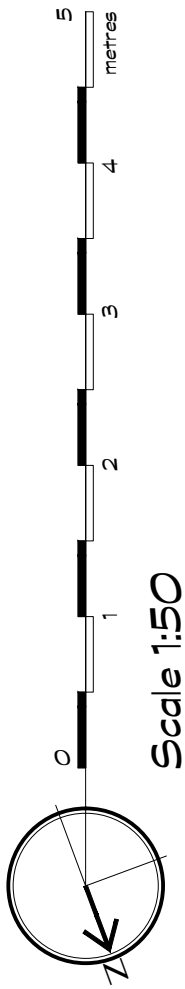
EXISTING SECOND FLOOR



EXISTING FIRST FLOOR



EXISTING GROUND FLOOR



TONIK.

2nd Floor Trowbray House, 108 Weston Street,
Bermondsey, London, SE1 3QB
Tel: 0203 998 1534 www.tonikassociates.co.uk

GENERAL NOTES:

DO NOT SCALE OFF THIS DRAWING. ALL SETTING OUT & DIMENSIONS TO BE CHECKED ON SITE.
ALL LEVELS TO BE CHECKED ON SITE & REFER TO ORDNANCE DATUM NEWLYN.

THIS DRAWING MUST BE READ IN CONJUNCTION WITH THE RELEVANT SPECIFICATION CLAUSES.
THIS DRAWING MUST NOT BE USED FOR LAND TRANSFER PURPOSES.
ALL JOINERY SETTING OUT ROADS TO BE APPROVED BY THE DESIGNERS PRIOR TO MANUFACTURE.

THIS DRAWING AND INFORMATION DISPLAYED MUST NOT BE COPIED OR USED FOR ANY PURPOSE WITHOUT THE WRITTEN PERMISSION OF TONIK ASSOCIATES LTD.
COPYRIGHT © 2023 TONIK ASSOCIATES LTD.

REVISIONS

REV:	DATE:	AMENDMENT:	INITIAL:
A	09.23	jumbrellas amended to show two 3m jumbrellas	GE

CLIENT: EAST END PUB Co.

PROJECT: THE LOCK TAVERN

TITLE: EXISTING LOCATION AND BLOCK PLANS

SCALE: 1:100 @ A1

DATE: 05.2023

DRG BY: GE

DRAWING NO: EXO1

REV: A