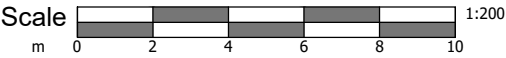
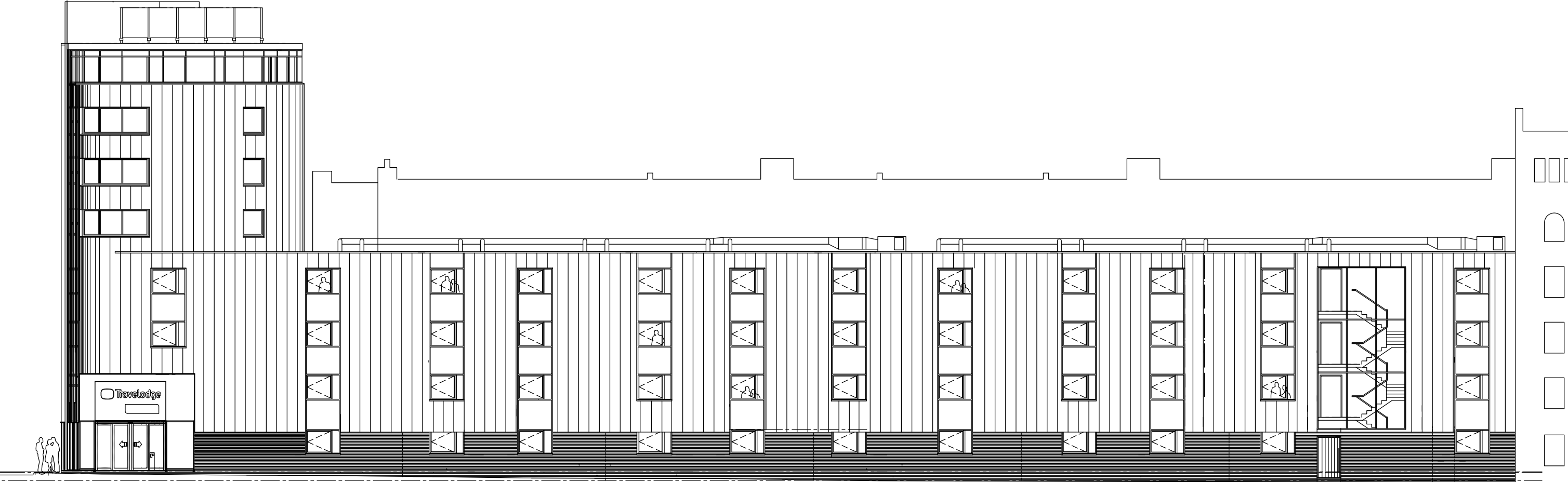


PLANNING

- NOTES
- DO NOT SCALE FROM THIS DRAWING.
 - ALL DIMENSIONS MUST BE CHECKED ON SITE.
 - ALL RIGHTS RESERVED, NO REPRODUCTION IN ANY MATERIAL FORM IS PERMITTED WITHOUT CONSENT.
 - THIS DRAWING IS COPYRIGHT OF CUMMING-GROUP



client
BAE System Pension Fund Trustee Ltd c/o JLL

1 Fellmongers Path, Tower
Bridge Road, London SE1 3LY
Tel : 020 7029 3888.
E: info@cumming-group.com
www.cumming-group.com



title
ELEVATION TO GRAFTON PLACE AS EXISTING

project
Travelodge, 1-11 Grafton Place, Euston, NW1 1DJ

P1	PLANNING ISSUE	18.11.22	AS
REV	DESCRIPTION	DATE	BY
drawing no. 1301 - 510		revision P1	checked DV
drawn AS	date 14-11-2022		

scales
1:200 @ A3