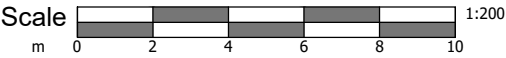
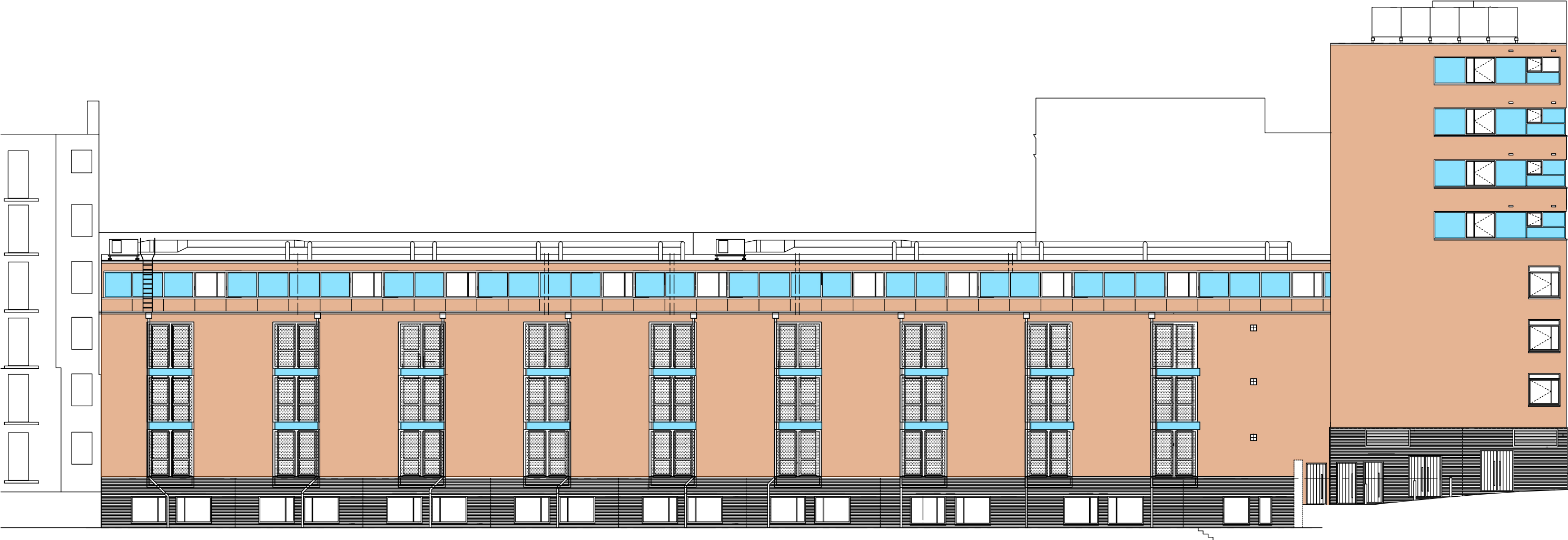


PLANNING

- NOTES
- DO NOT SCALE FROM THIS DRAWING.
 - ALL DIMENSIONS MUST BE CHECKED ON SITE.
 - ALL RIGHTS RESERVED, NO REPRODUCTION IN ANY MATERIAL FORM IS PERMITTED WITHOUT CONSENT.
 - THIS DRAWING IS COPYRIGHT OF CUMMING-GROUP



KEY :

- Wall Type 1 - Copper Cladding
- Wall Type 2 - Spandrel Panel
- Wall Type 3 - Acrylic Render

client BAE System Pension Fund Trustee Ltd c/o JLL		1 Fellmongers Path, Tower Bridge Road, London SE1 3LY Tel : 020 7029 3888. E: info@cumming-group.com www.cumming-group.com			title WELLESLEY HOUSE ELEVATION AS PROPOSED		drawing no. 1301 - 211		revision P1		checked DV	
scales 1:200 @ A3					project Travelodge, 1-11 Grafton Place, Euston, NW1 1DJ		drawn AS		date 15-11-2022			