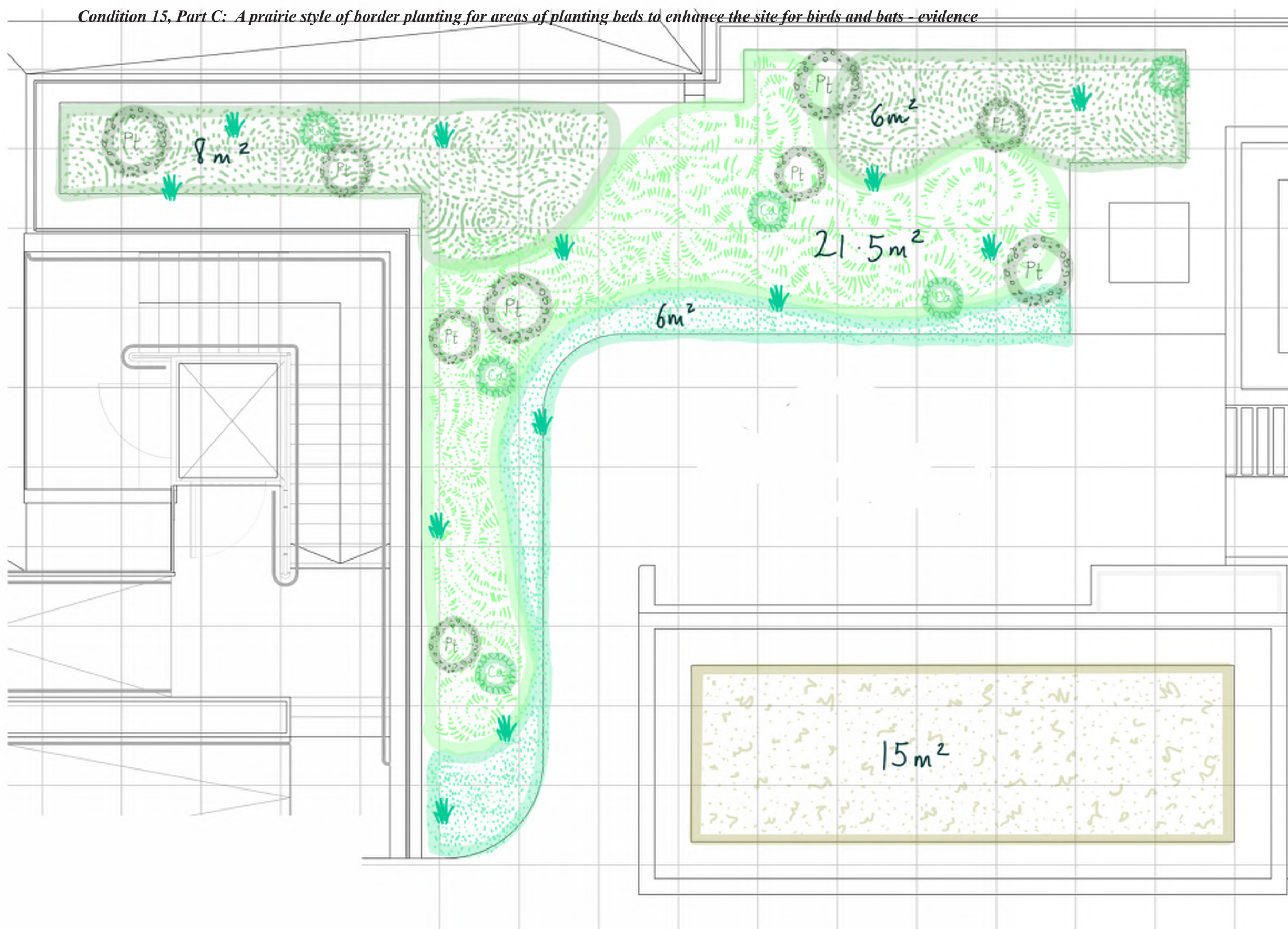


Condition 15, Part C: A prairie style of border planting for areas of planting beds to enhance the site for birds and bats - evidence



KEY

- Phormium tenax - 12 no.
- Cistus Alan Fodd - 5 no.
- Pittasporum 70-80 cm dia. - 4 no.
- Pittasporum 40-60 cm dia. - 5 no.
- Mix A - 6 m²
- Mix B - 14 m²
- Mix C - 21.5 m²
- Mix D - 15 m²

1m²

Project. Network Building

Drawing no. 001

Drawing Title. Planting Plan - Intensive 01

Drawing Date. 30.11.2022

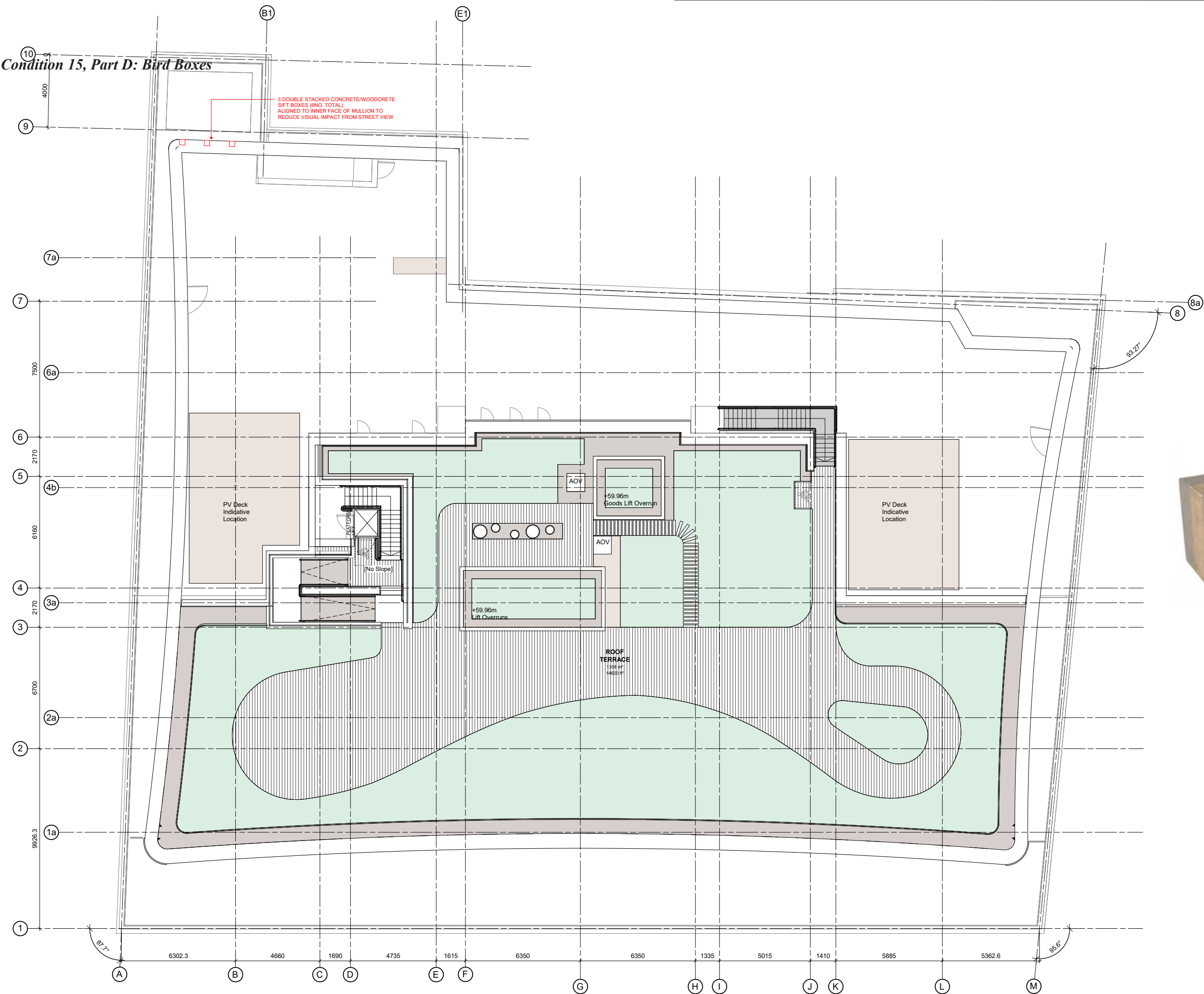
Drawing Purpose. For tender

Drawing Scale. 1:50@A3

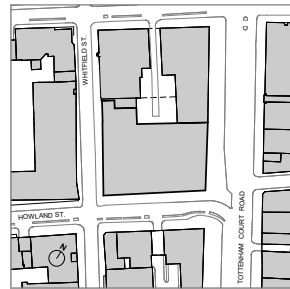
Revision. -

By. Landscape Architects, FFLO, www.fflo.co.uk

Condition 15, Part D: Bird Boxes



Key Plan



Do not scale from this drawing.

Check drawing on receipt and immediately report any discrepancies to the Architect.

Verify all dimensions and levels on site prior to construction.

The contents of this drawing are Piercy&Company copyright and shall not be re-used without their written permission.

Notes



- BIRD BOX LOCATIONS - REFER TO ECOLOGY CONSULTANTS INFORMATION FOR FURTHER DETAILS.
- 3 DOUBLE STACKED CONCRETE/WOODCRETE SWIFT BOXES (6NO. TOTAL), FIXED TO EXTERNAL FACE OF PLANT SCREEN WITHIN ACCESSIBLE MAINTENANCE TERRACE EXTENT AND ADJACENT TO GREEN ROOF.
- BIRD BOX FABRIC/FINISH TO MATCH PLANT SCREEN MATERIALITY/FINISH AS CLOSELY AS POSSIBLE. BOXES TO BE LOCATED AT LEAST 3M FROM EXTERNAL GROUND LEVEL.



P01 12.09.23 Planning Issue - Discharge of conditions
Rev Date Description KC Issued

Piercy&Company

Piercy&Company
39 Plender Street
London NW1 0DT

T +44(0)20 74249611
info@piercyandco.com
www.piercyandco.com

Client
DERWENT LONDON

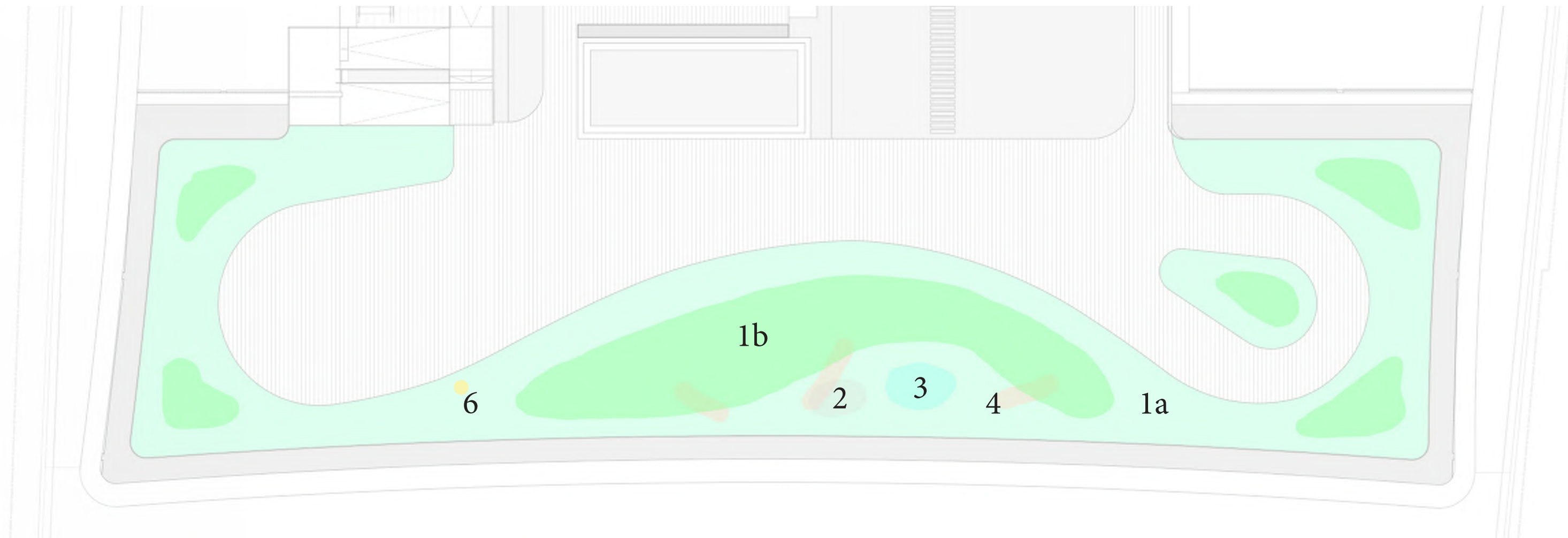
Project
**THE NETWORK BUILDING
95-100 Tottenham Court Rd.**

Drawing Title
**PROPOSED LEVEL 09
LANDSCAPE PLAN**

Drawing Status
For Information

Date: 12.09.23
Scale @ A1: 1 : 100
Scale @ A3: 1 : 50

Drawing No.
13538-PCO-XX-09-DR-A-SK78



SEMI INTENSIVE PLANTING ZONE

This area will be treated as a more carefully designed and ornamental version of a biodiverse roof. It will have the essential elements of a BIODIVERSE roof but set within a planting scheme that suits the office amenity use that it will serve. These biodiverse roof elements will include:

1. A various depths of growing medium, ranging from 120mm (1a) to 300mm (1b)deep.
2. Various sized aggregates used to make up the gravel mulch with some areas of large stones for habitat and basking.
3. A temporary water body
4. Logs for habitat, basking and perching
5. A varying height of vegetation including many species that are either native or from the RHS Plants for Pollinators list. The species will be selected to enhance interest throughout the year and provide cover and structure into the winter months.
6. Interpretation - there is a wonderful opportunity here to engage the users of the roof garden with the biodiverse enhancements through simple interpretation and signing.



6



SEMI INTENSIVE ZONE