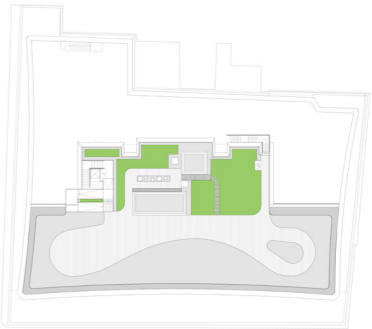


Condition 15, Part C: A prairie style of border planting for areas of planting beds to enhance the site for birds and bats - evidence

INTENSIVE PLANTING ZONE

This deeper area of soil will allow a more varied planting scheme that is balanced more towards visual amenity.



Condition 15, Part C: A prairie style of border planting for areas of planting beds to enhance the site for birds and bats - evidence

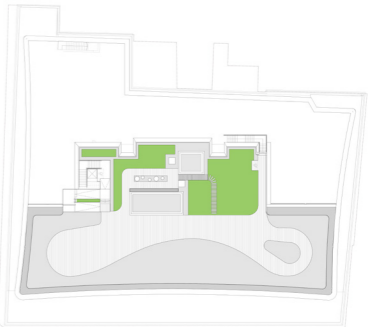
PLANTING PALETTE - INTENSIVE ZONE - 300mm soil depth

A mix of creeping species, bulbs, herbs, grasses and perennials. A few carefully selected smaller shrubs may be possible here, planted relatively young to suit the planting depth and allow them to acclimatise to conditions. Some taller grasses here will also give some enclosed in the summer months. We will add a selection of fragrant herbs to enhance the sensory quality of the planting. Many of these species are also excellent for insects. The matrix will include 25 native species and we intend to oversow with native annuals.



300MM DEEP AREAS

J	F	M	A	M	J	J	A	S	O	N	D	Evergreen	PLANT SPECIES	
													winter structure	Helichtotrichon sempervirens
														Euphorbia mysinities
														Pulsatilla vulgaris
														& seedheads
														Stachys byzantina
														Thymus serphyllum 'Minor'
													bulb	Iris reticulata (Jan Feb)
													shrub	Cistus x purpureus Alan Fradd
														Armeria pseudarmeria Ballerina Lilac
													winter structure	Eryngium bougatii Picos Blue
														Calamintha nepeta
														Ballota pseudodictamnus
														Euphorbia characia subsp. Wulfenii
														Limonium perezii
													winter structure	Calamagrostis Karl Foerster
													tall spires	Kniphofia Pineapple popsicle
														Salvia nemerosa Ostfriesland
														Euphorbia rigida
														Dorycnium hirsutum
													winter structure	Eryngium planum Blue Glitter
														Achillea amillefolium
													winter structure	Verbascum bombyciferum
														Phormium tenax
														Sempervivium house leeks
													shrub	Brachyglottis compacta ‘Sunshine’
													bulb	Allium cristophii
													bulb	Scilla litardierei amethystina
													bulb	Iris sibirica
													winter structure	Phlomis russeliana
													bulb	Narcissus bulbocodium Arctic Bells
														Sisyrinchium striatum



INTENSIVE ZONE