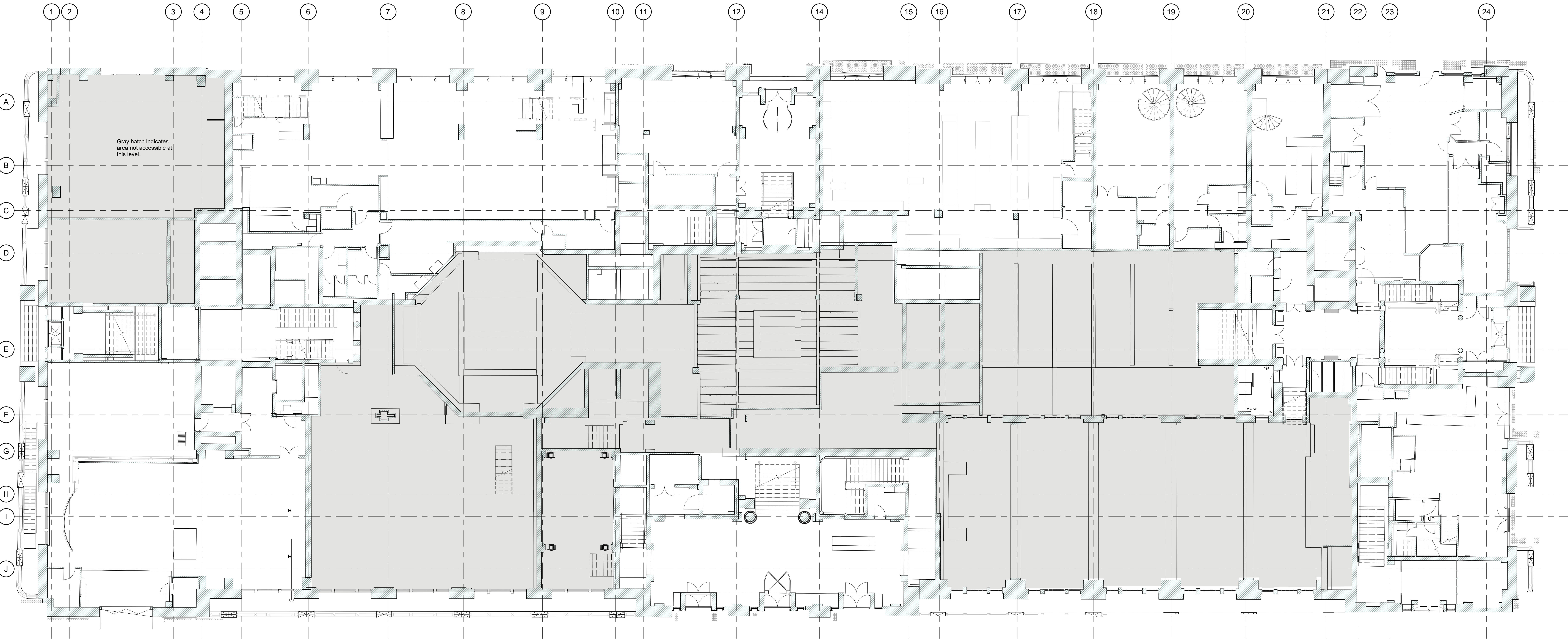


EXISTING NOTES

- ALL SERVICES SHOWN ON THIS DRAWING ARE INCLUDED FOR SCALE, SPATIAL CONTEXT & COORDINATION ONLY. PLEASE REFER TO INDIVIDUAL CONSULTANTS INFORMATION FOR DETAILS.
- THE PURPOSE OF THIS DRAWING AND IT'S RELEVANT PACKAGE IS FOR STAGE 4 INFORMATION ONLY.
- DO NOT SCALE DRAWING, USE FIGURED DIMENSIONS ONLY.
- ALL DIMENSIONS ARE IN MILLIMETERS.
- EXISTING DRAWINGS ARE BASED ON A DIGITAL SURVEY, ANY DESCREPANCIES IDENTIED ON SITE TO BE REPORTED TO THE ARCHITECT.



1 Existing Plan - Lower Ground Floor

1:100

SYMBOLS & HATCHES LEGEND

- Existing Building
- Drainage Positions
- Ramps
- New disabled refuse wireless call points

NOTE:
Please refer to Proposed Soft Strip drawings. 21593-1001 to 1009 for levels Basement B2 to Level 3 and level 5 for all items to be removed under a separate soft strip contract by others. Which do not form part of this contract unless otherwise instructed.

The copyright of this drawing is vested with Corstorphine & Wright Ltd and must not be copied or reproduced without the consent of the company.

T-02 Stage 4a Information Issue

17-01 UPDATE SCALEBAR

16.06.2023 DL ML

21.12.2022 DL ML

21.10.2022 EM RW

Date Draw Check

16.06.2023 DL ML

21.12.2022 DL ML

21.10.2022 EM RW

Date Draw Check

DRAWING PACKAGE REFERENCES

0200 Series - Existing Plans, Sections & Elevations

1100 Series - Demolition

2000 Series - Proposed Plans, Sections & Elevations

2200 Series - Fire Strategy

2400 Series - Wall Types

2500 Series - Floor Finishes

2600 Series - Ceiling Finishes

2700 Series - Setting Out

3000 Series - External Details

4000 Series - Internal Details

5000 Series - Schedules

Client:
Oxford Victoria House Ltd.

Project:
21593 - Victoria House

Drawing Title:
Plan - GA Existing - Lower Ground Floor

Drawing Status:
INFORMATION

London Studio
21-27 Laro's Conduit Street, Highborn, London, WC1N 3NL
020 7465 0820
corstorphine-wright.com

Drawing No.
21593-CWA-VH-LG-DR-A-0224

Drawn
DL

Checked
ML

Paper Size
A0

Scale
As indicated

Date
21/12/2022

Revision
T-02