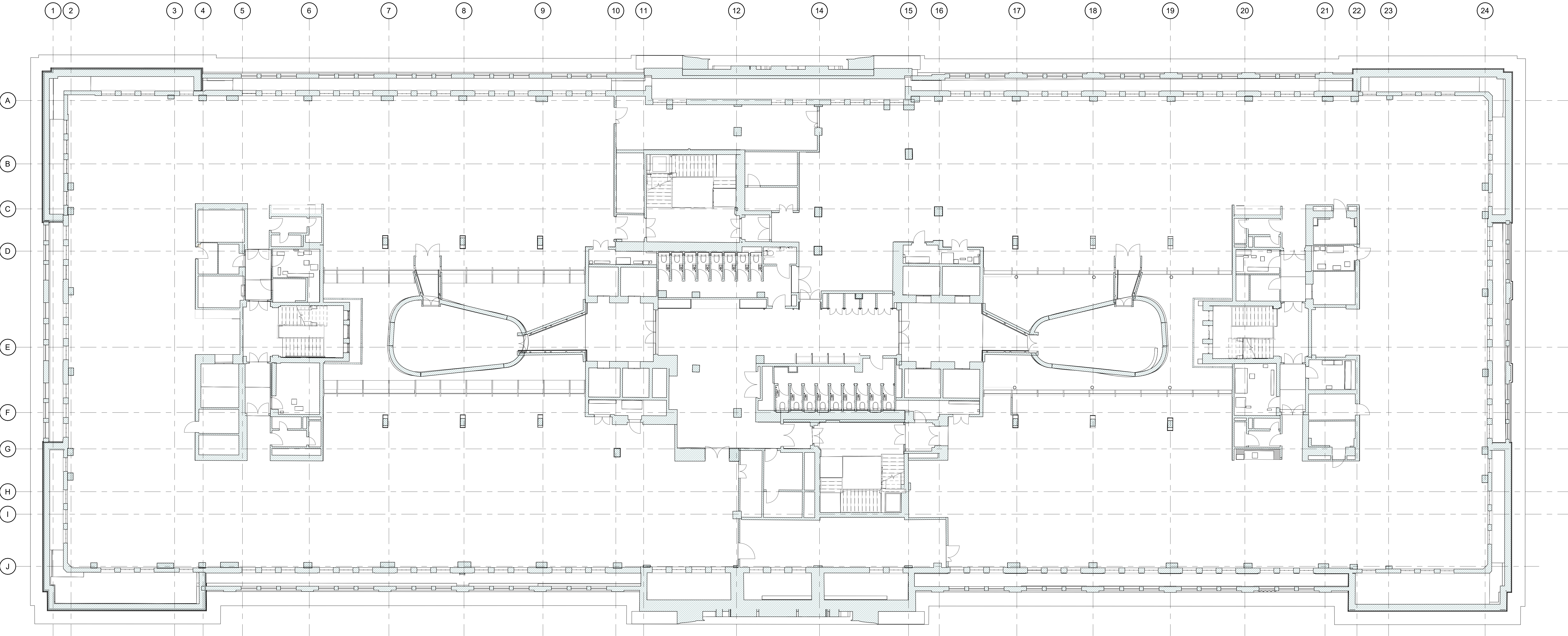


EXISTING NOTES

- ALL SERVICES SHOWN ON THIS DRAWING ARE INCLUDED FOR SCALE, SPATIAL CONTEXT & COORDINATION ONLY. PLEASE REFER TO INDIVIDUAL CONSULTANTS INFORMATION FOR DETAILS.
- THE PURPOSE OF THIS DRAWING AND IT'S RELEVANT PACKAGE IS FOR STAGE 4 INFORMATION ONLY.
- DO NOT SCALE DRAWING, USE FIGURED DIMENSIONS ONLY.
- ALL DIMENSIONS ARE IN MILLIMETERS.
- EXISTING DRAWINGS ARE BASED ON A DIGITAL SURVEY, ANY DESCREPANCIES IDENTIED ON SITE TO BE REPORTED TO THE ARCHITECT.

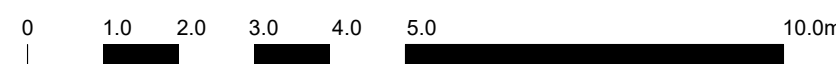
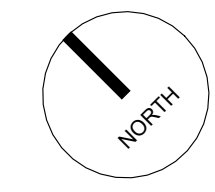


1 Existing Plan - Fifth Floor

1:100

SYMBOLS & HATCHES LEGEND

- Existing Building
- Drainage Positions
- Ramps
- New disabled refuge with wireless call points



The copyright of this drawing is vested with Corstorphine & Wright Ltd and must not be copied or reproduced without the consent of the company.

T-02 STAGE 4A INFORMATION ISSUE  
T-01 UPDATE SCALEBAR  
T-00 TENDERS ISSUE

16.06.2023 DL ML  
21.12.2022 DL ML  
21.10.2022 EM RW  
Date Drawn/Check

DRAWING PACKAGE REFERENCES

0200 Series - Existing Plans, Sections & Elevations  
1100 Series - Demolition  
2000 Series - Proposed Plans, Sections & Elevations  
2200 Series - Fire Strategy  
2400 Series - Wall Types  
2500 Series - Floor Finishes

2600 Series - Ceiling Finishes  
2700 Series - Setting Out  
3000 Series - External Details  
4000 Series - Internal Details  
5000 Series - Schedules

Client:  
Oxford Victoria House Ltd.

Project:  
21593 - Victoria House

Drawing Title:  
Plan - GA Existing - Fifth Floor

Drawing Status:  
INFORMATION

Corstorphine & Wright

London Studio  
21/27 Leman's Conduit Street, Holborn, London, WC1N 3NL  
020 7465 0033

corstorphine-wright.com

Drawing No.  
21593-CWA-VH-05-DR-A-0231

Drawn: DL  
Checked: ML  
Paper Size: A0  
Scale: As indicated  
Date: 21/12/2022

Revision  
T-02