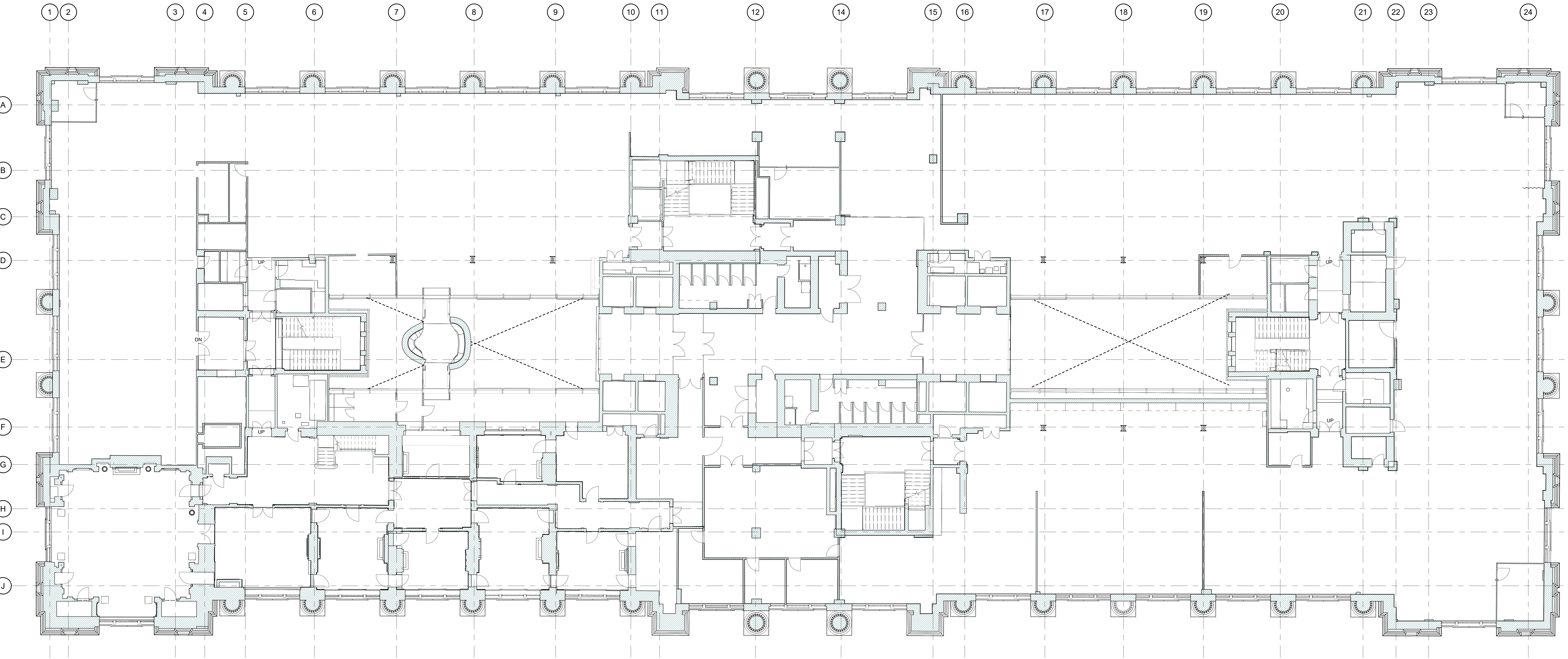


**EXISTING NOTES**

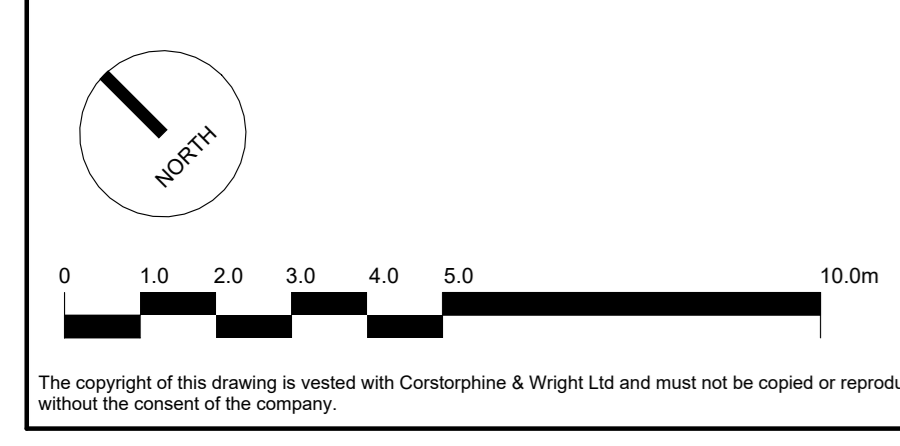
- ALL SERVICES SHOWN ON THIS DRAWING ARE INCLUDED FOR SCALE, SPATIAL CONTEXT & COORDINATION ONLY. PLEASE REFER TO INDIVIDUAL CONSULTANTS INFORMATION FOR DETAILS.
- THE PURPOSE OF THIS DRAWING AND ITS RELEVANT PACKAGE IS FOR STAGE 4 INFORMATION ONLY.
- DO NOT SCALE DRAWING, USE FIGURED DIMENSIONS ONLY.
- ALL DIMENSIONS ARE IN MILLIMETERS.
- EXISTING DRAWINGS ARE BASED ON A DIGITAL SURVEY, ANY DISCREPANCIES IDENTIFIED ON SITE TO BE REPORTED TO THE ARCHITECT.



1 Existing Plan - Third Floor  
1:100

**SYMBOLS & HATCHES LEGEND**

- Existing Building
- Drainage Positions
- Ramps
- New disabled refuge with wireless call points



Rev.	Description	Date	Drawn	Checked
T-02	STAGE 4A INFORMATION ISSUE	16.08.2023	DL	ML
T-01	UPDATE SCALE BAR	21.12.2022	DL	ML
T-00	TENDER ISSUE	21.10.2022	EM	RW

**DRAWING PACKAGE REFERENCES**

0200 Series - Existing Plans, Sections & Elevations	2600 Series - Ceiling Finishes
1100 Series - Demolition	2700 Series - Setting Out
2000 Series - Proposed Plans, Sections & Elevations	3000 Series - External Details
2200 Series - Fire Strategy	4000 Series - Internal Details
2400 Series - Wall Types	5000 Series - Schedules
2500 Series - Floor Finishes	

Client: Oxford Victoria House Ltd.  
 Project: 21593 - Victoria House  
 Drawing Title: Plan - GA Existing - Third Floor  
 Drawing No: 21593-CWA-VH-03-DR-A-0229  
 Drawing Status: INFORMATION

**Corstorphine & Wright**  
 London Studio  
 21-27 Lark's Court Street, Holborn, London, WC1N 3NL  
 020 7463 0520  
 corstorphine-wright.com

Drawn	Checked	Paper Size	Scale	Date	Revision
DL	ML	A0	As indicated	21/12/2022	T-02