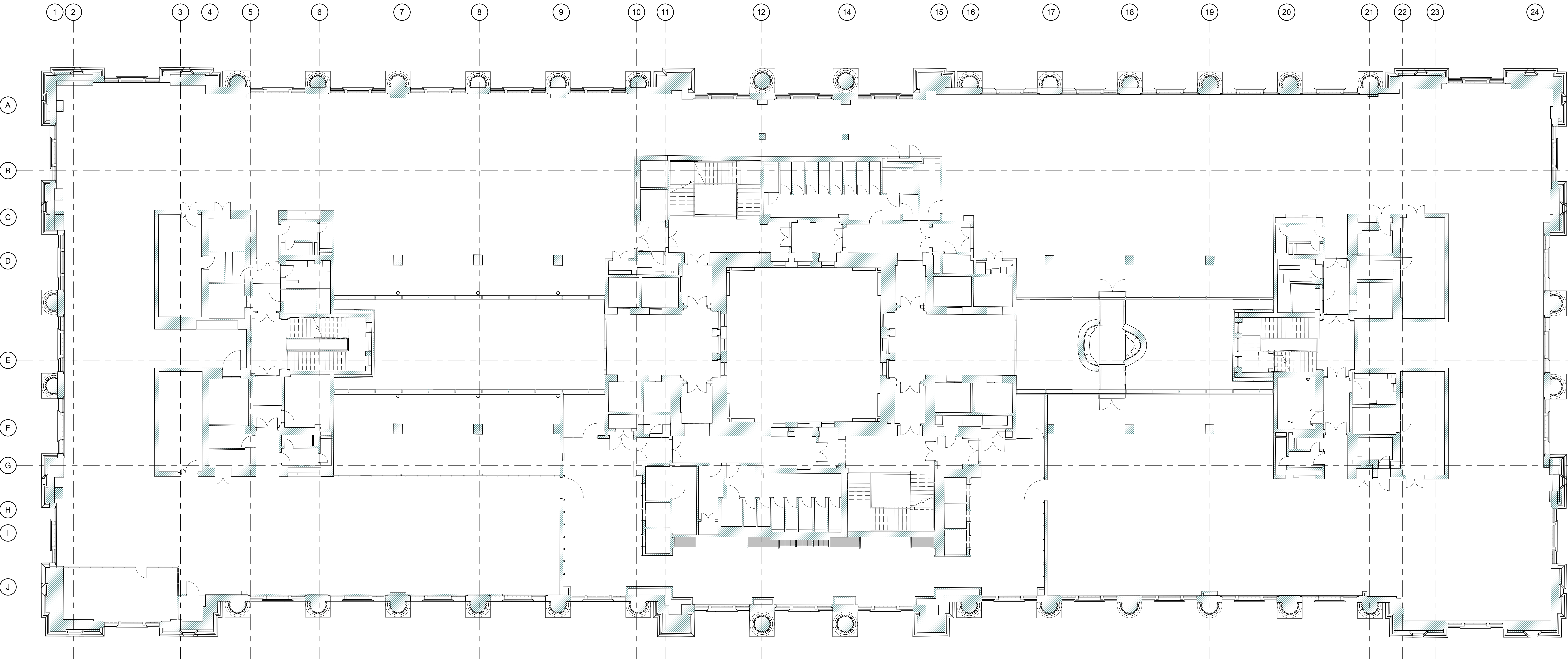


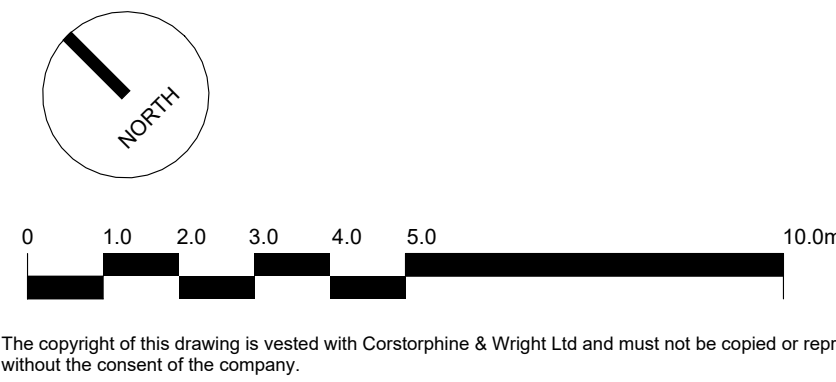
- EXISTING NOTES**
- ALL SERVICES SHOWN ON THIS DRAWING ARE INCLUDED FOR SCALE, SPATIAL CONTEXT & COORDINATION ONLY. PLEASE REFER TO INDIVIDUAL CONSULTANTS INFORMATION FOR DETAILS.
 - THE PURPOSE OF THIS DRAWING AND IT'S RELEVANT PACKAGE IS FOR STAGE 4 INFORMATION ONLY.
 - DO NOT SCALE DRAWING, USE FIGURED DIMENSIONS ONLY.
 - ALL DIMENSIONS ARE IN MILLIMETERS.
 - EXISTING DRAWINGS ARE BASED ON A DIGITAL SURVEY, ANY DESCREPANCIES IDENTIED ON SITE TO BE REPORTED TO THE ARCHITECT.



1 Existing Plan - Second Floor
1 : 100

SYMBOLS & HATCHES LEGEND

- Existing Building
- Drainage Positions
- Ramps
- New disabled refuge with wireless call points



T-02 STAGE 4A INFORMATION ISSUE		16.06.2023	DL	ML
T-01 UPDATE SCALEBAR		21.12.2022	DL	ML
T-00 TENDRER ISSUE		21.10.2022	EM	FW
Rev	Description	Date	Draw	Check

DRAWING PACKAGE REFERENCES

0200 Series - Existing Plans, Sections & Elevations
1100 Series - Demolition
2000 Series - Proposed Plans, Sections & Elevations
2200 Series - Fire Strategy
2400 Series - Wall Types
2500 Series - Floor Finishes

2600 Series - Ceiling Finishes
2700 Series - Setting Out
3000 Series - External Details
4000 Series - Internal Details
5000 Series - Schedules

Client:
Oxford Victoria House Ltd.

Project:
21593 - Victoria House

Drawing Title:
Plan - GA Existing - Second Floor

Drawing Status:
INFORMATION

Corstorphine & Wright

London Studio
21/27 Larn's Conduit Street, Holborn, London, WC1N 3NL
020 7465 0600

corstorphine-wright.com

Drawing No. 21593-CWA-VH-02-DR-A-0228	Revision T-02
Drawn DL	Checked ML
Paper Size A0	Scale As indicated
Date 21/12/2022	