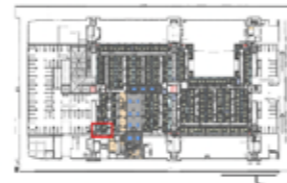
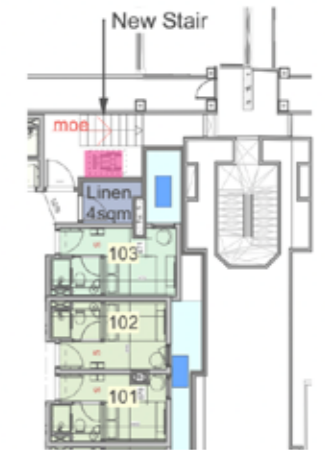


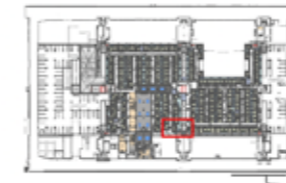
14.02 FIRE STRATEGY - DISABLED REFUGE POINTS

Provision will be made for a disabled refuge within the stair or stair lobby enclosure within each protected escape stair. The disabled refuges measure 900mm x 1,400mm and not impinge on width of the escape routes for the building.

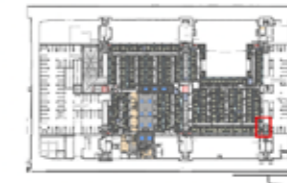
Each refuge point will be provided with a two-way communication system so that the management is aware of anyone awaiting assistance in the refuge space. This will be linked to either a reception desk or another appropriate location (such as next to the fire alarm panel or adjacent to the fire service access point) such that there is a member of staff or other to answer the EVC (Emergency Voice Communication) device. The EVC communication system will be active at all times and not just under a fire situation.



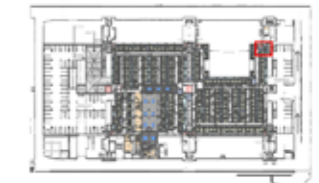
STAIRCASE 1



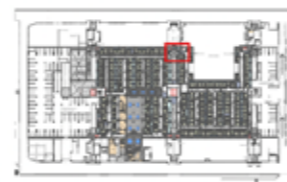
STAIRCASE 2



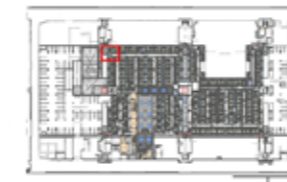
STAIRCASE 3



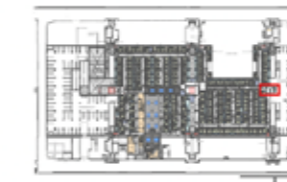
STAIRCASE 4



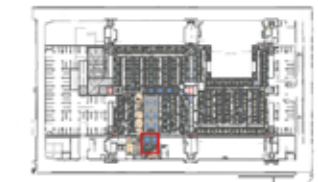
STAIRCASE 5



STAIRCASE 6



STAIRCASE 7



STAIRCASE 8

■ Disabled refuge