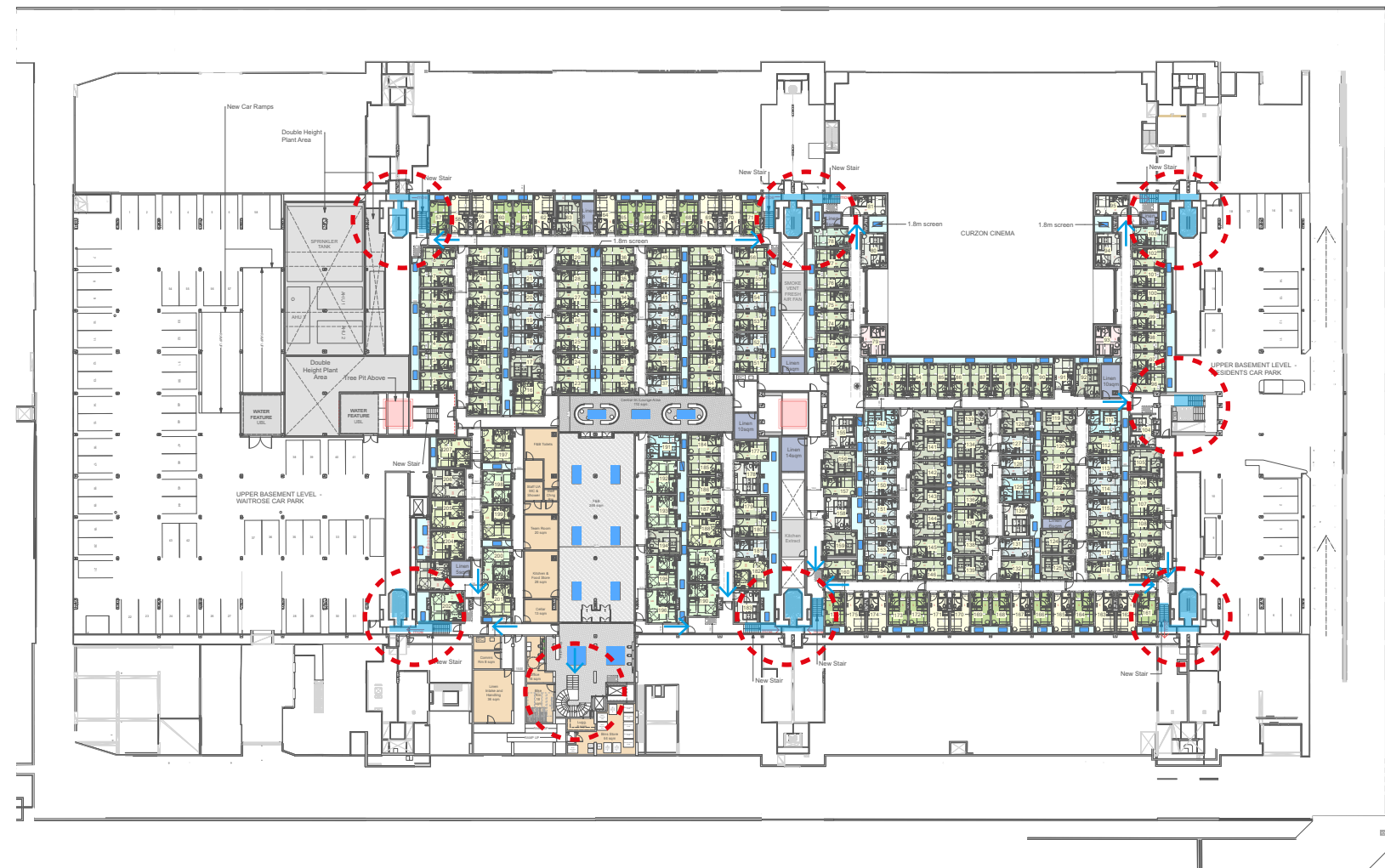

FIRE STRATEGY

14.01 FIRE STRATEGY - SUMMARY

The evacuation procedure within all areas of the basement hotel demise will follow a simultaneous evacuation philosophy. If a fire alarm is raised within any area of the basement the alarm will sound throughout the basement hotel and all occupants would evacuate immediately.

The building is served by 8 protected stairs, 6 central stairs shared with the shopping centre, the existing stair on the right-hand side of the plan discharging directly into the ground floor central street and the stair discharging at the hotel entrance located off Marchmont Street.

Further details are provided in the Supporting Fire Statement, prepared by Orion Fire.

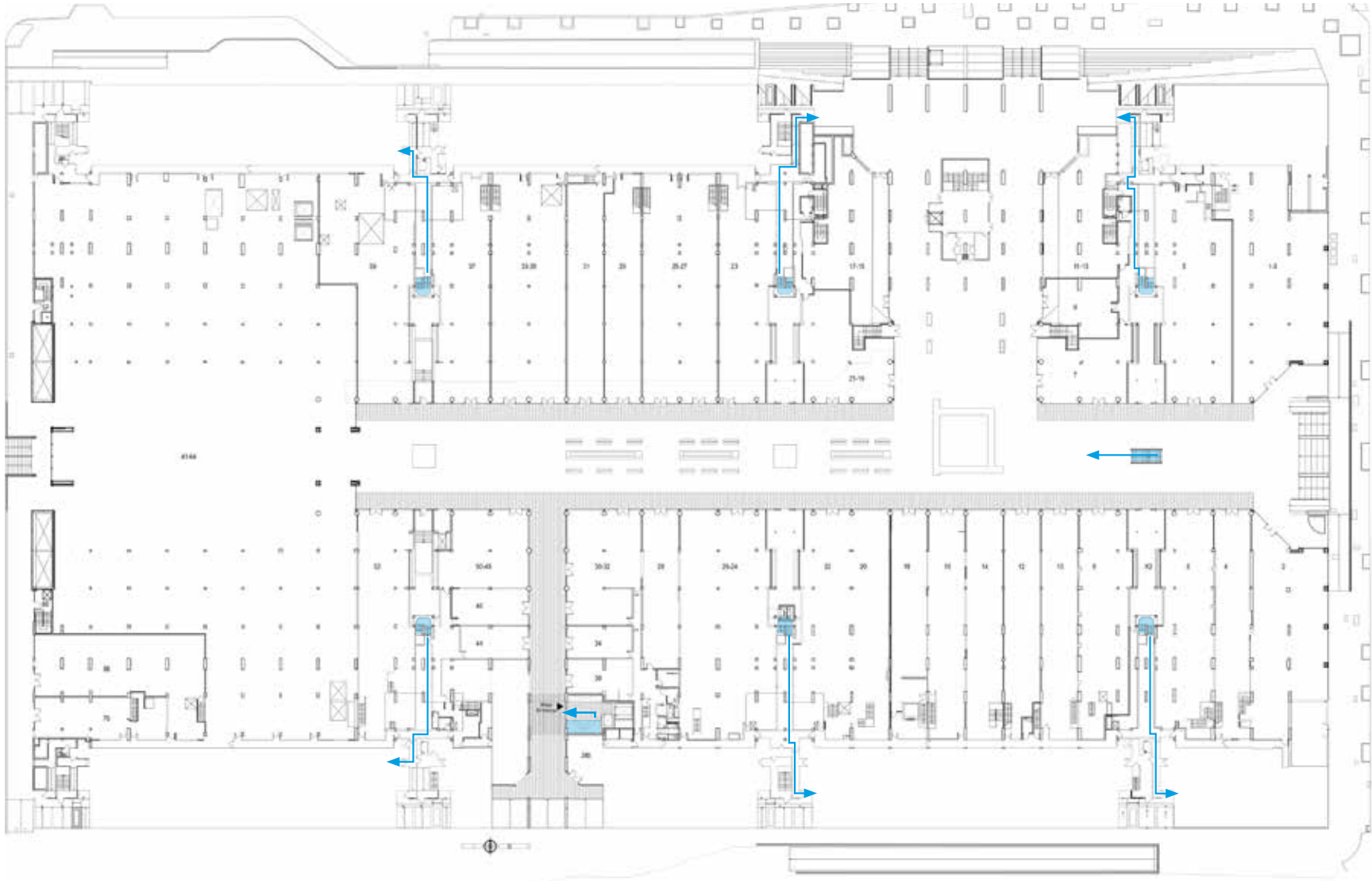


HOTEL LEVEL PLAN

 Means of Escape - Protected stairs

14.01 FIRE STRATEGY - SUMMARY

The 7 existing protected staircases will discharge onto the streets at ground floor level through a dedicated corridor, separated from the residential escape routes.



GF LEVEL PLAN

→ Means of escape routes