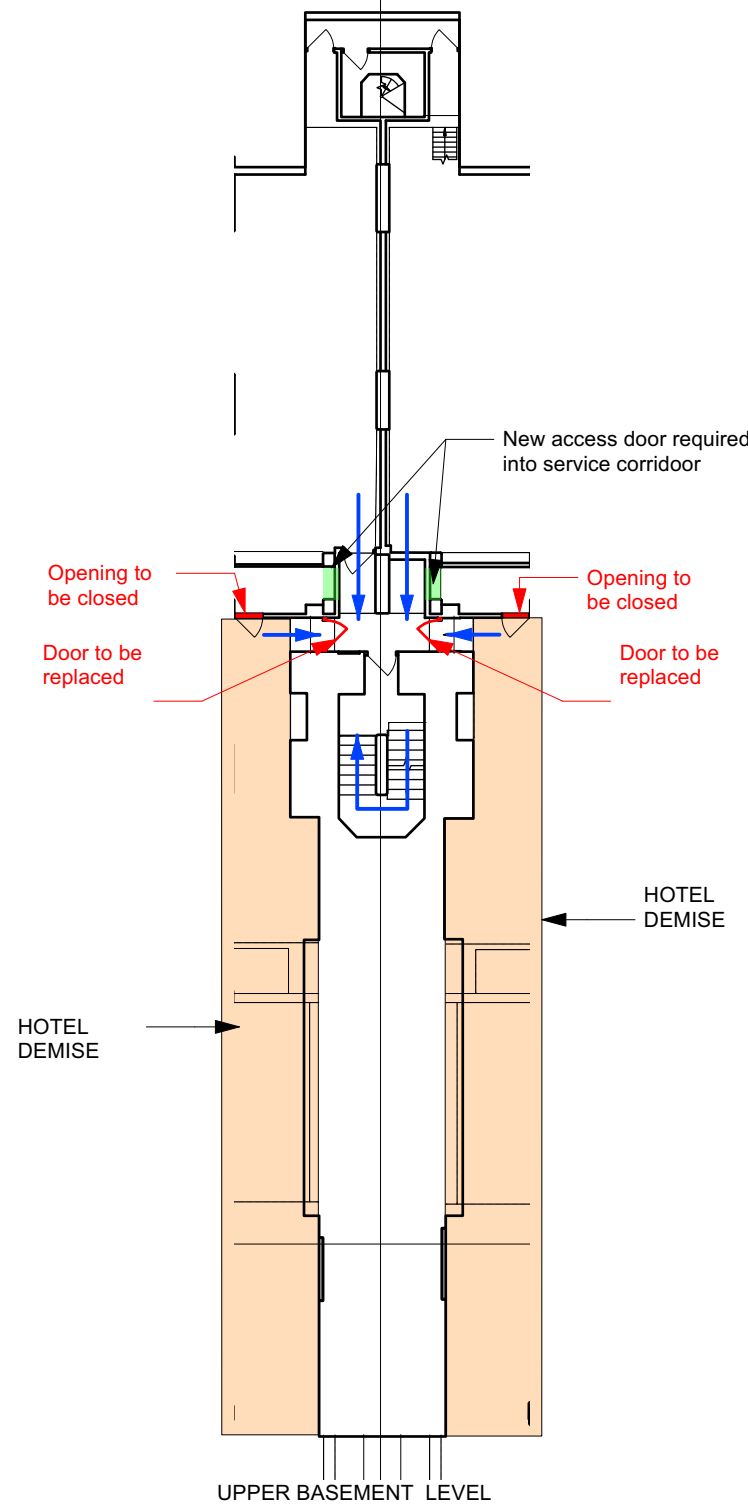
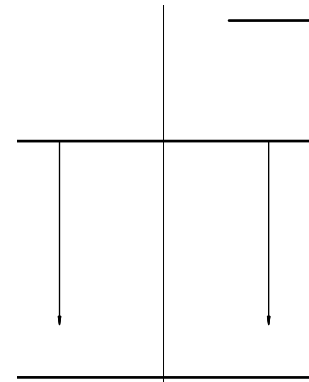
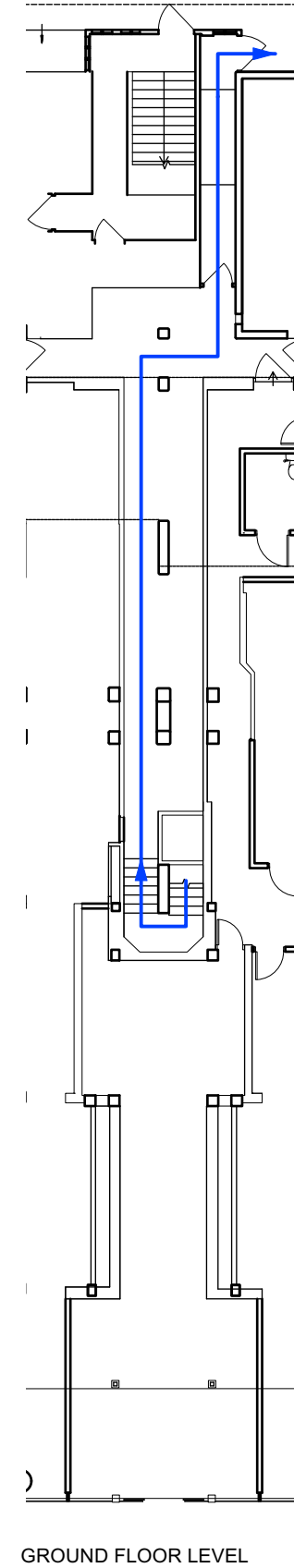
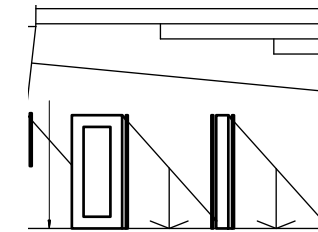


LOWER BASEMENT LEVEL



UPPER BASEMENT LEVEL



GROUND FLOOR LEVEL

This drawing is the copyright of Axiom Architects. It is for planning application purposes only and may not be reproduced in whole or in part without permission. Drawings lodged for planning approval may be reproduced by the Planning Authority in accordance with the Copyright (Material Open to Public Inspection) (Marking of Copies of Plans and Drawings) Order 1990 and must carry the relevant copyright restriction note. Scaling from this drawing should only be carried out from a print at the scale and size specified within the title block. Responsibility for ensuring correct size reproduction remains with the reader.

- Key**
- Escape route
 - Car park
 - Future hotel demise
 - New access door

Rev	Date	Description	By	Chk
B	06/07/23	For planning		FP
A	06/07/23	For Information		FP

AXIOM ARCHITECTS
 Morelands 5-27 Old Street London EC1V 9HL
 Tel. 0207 421 8866 www.axiomarchitects.co.uk

Client
LAZARI INVESTMENTS LTD

Project
 BRUNSWICK CENTRE
 BLOOMSBURY
 LONDON WC1N 1BS

Drawing
**Existing stairs intervention
 Stair 5**

Scale	Date	Drawn	Checked
1:200	15/11/22	FP	JM

Drawing No. **4742-PA1-134** Revision

4742-PA1-134 B

Status
PLANNING