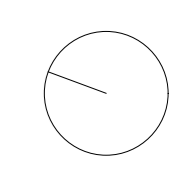
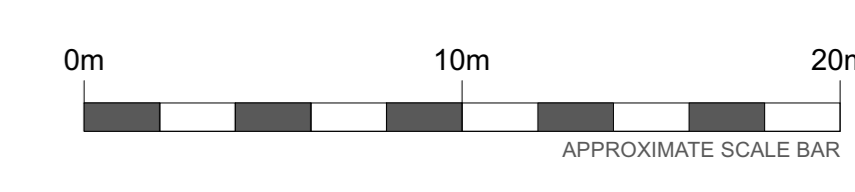
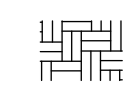

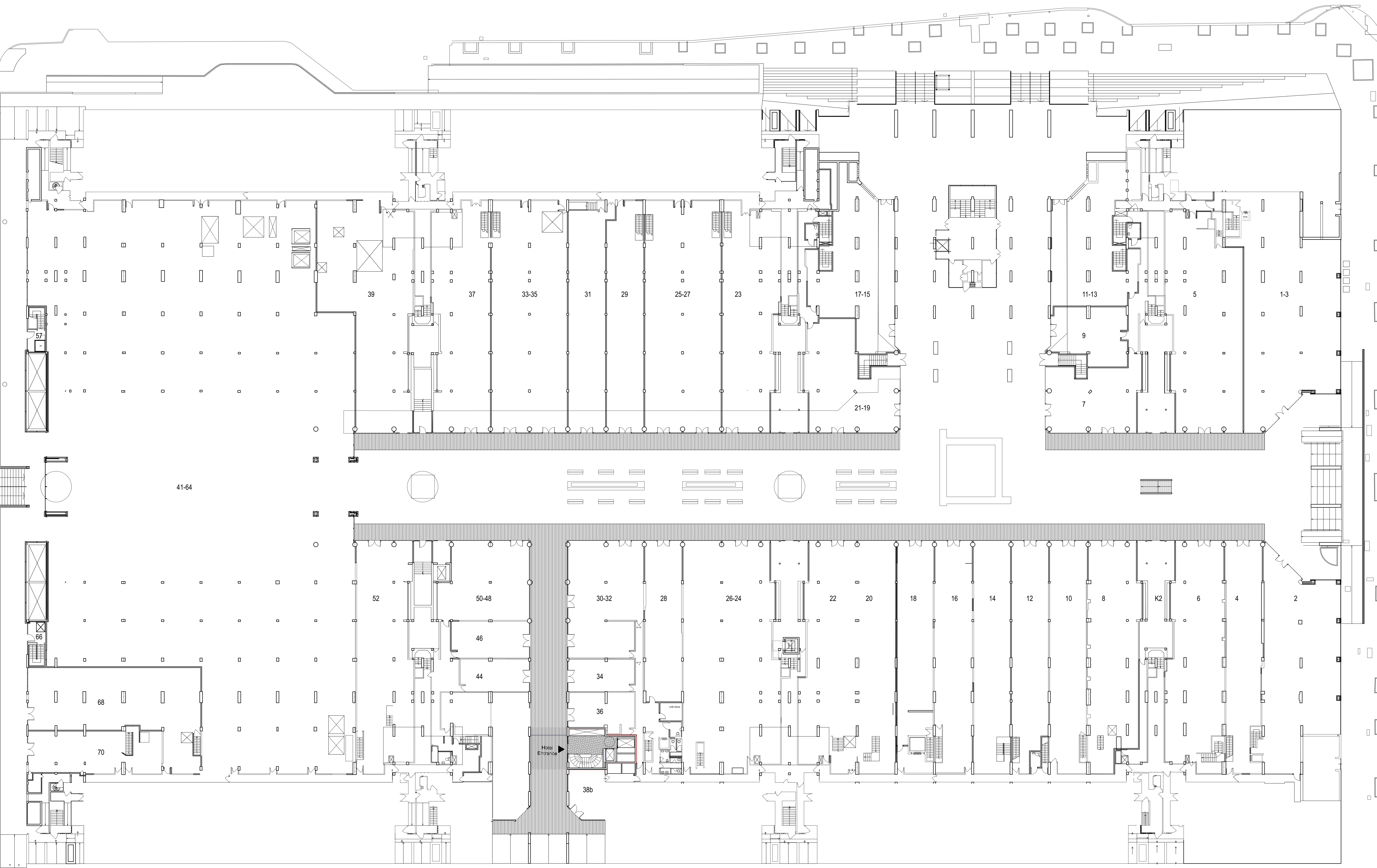


This drawing is the copyright of Axiom Architects. It is for planning application purposes only and may not be reproduced in whole or in part without permission. Drawings lodged for planning approval may be reproduced by the Planning Authority in accordance with the 'Copyright (Material Open to Public Inspection) (Marking of Copies of Plans and Drawings) Order 1990' and must carry the relevant copyright restriction note. Scaling from this drawing should only be carried out from a print at the scale and size specified within the title block. Responsibility for ensuring correct size reproduction remains with the reader.



Key
 Hotel lobby 
 Unit 38A 



B	06/07/23	For planning	Fp
A	23/05/23	Stage 2 issue	FP
Rev	Date	Description	By
			Chk

AXIOM ARCHITECTS
 Morelands 5-27 Old Street London EC1V 9HL
 Tel. 0207 421 8866 www.axiomarchitects.co.uk

Client
 LAZARI INVESTMENTS LTD

Project
 BRUNSWICK CENTRE
 BLOOMSBURY
 LONDON WC1N 1BS

Drawing
 PROPOSED GA PLAN GF
 Ground floor

Scale	Date	Drawn	Checked
1:200	15/11/2022	FP	JM
Drawing No.	Revision		

4742-PA1-100 B
 Status
 PLANNING

3 Proposed Ground floor
 Scale: 1:200