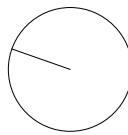
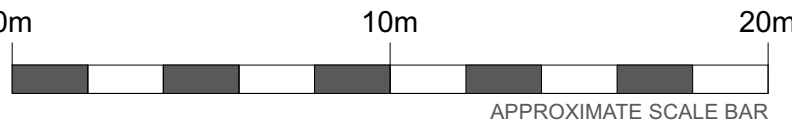


This drawing is the copyright of Axiom Architects. It is for planning application purposes only and may not be reproduced in whole or in part without permission. Drawings lodged for planning approval may be reproduced by the Planning Authority in accordance with the 'Copyright (Material Open to Public Inspection) (Marking of Copies of Plans and Drawings) Order 1990' and must carry the relevant copyright restriction note. Scaling from this drawing should only be carried out from a print at the scale and size specified within the title block. Responsibility for ensuring correct size reproduction remains with the reader.



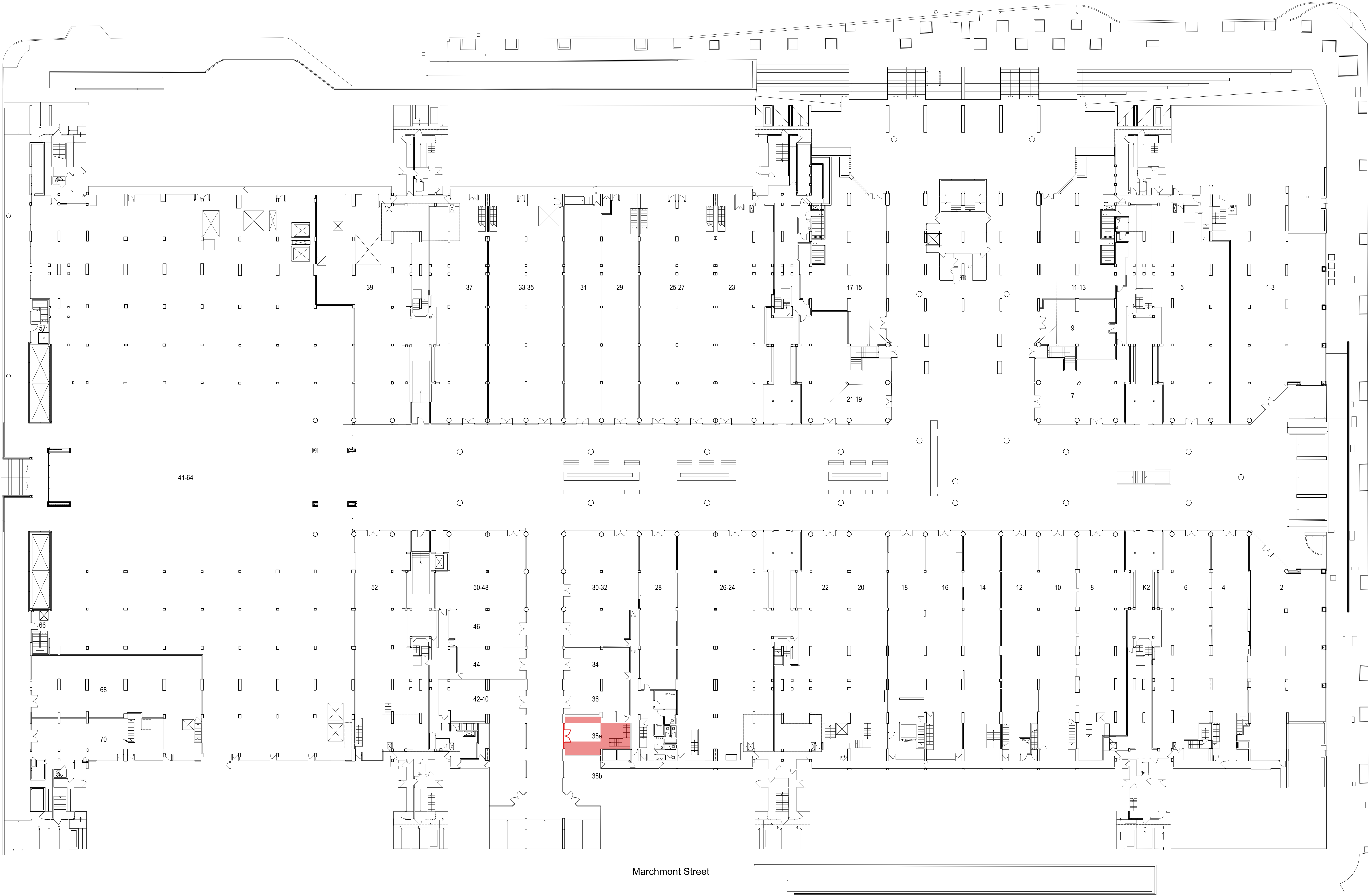
To be removed



Beam removed



RC/ Masonary wall
to be removed



| | | | |
|-----|----------|---------------|--------|
| B | 06/07/23 | For planning | FP |
| A | 23.05.23 | Stage 2 issue | FP |
| Rev | Date | Description | By Chk |

AXIOM
ARCHITECTS

Morelands 5-27 Old Street London EC1V 9HL
Tel. 0207 421 8866 www.axiomarchitects.co.uk

Client
LAZARI INVESTMENTS LTD

Project
**BRUNSWICK CENTRE
BLOOMSBURY
LONDON, WC1N 1BS**

Drawing
**Fabric removal plans
Ground floor**

| | | | |
|-------------|------------|-------|---------|
| Scale | Date | Drawn | Checked |
| 1:200 | 15/11/2022 | FP | JM |
| Drawing No. | Revision | | |

4742-PA1-018 B

Status
PLANNING