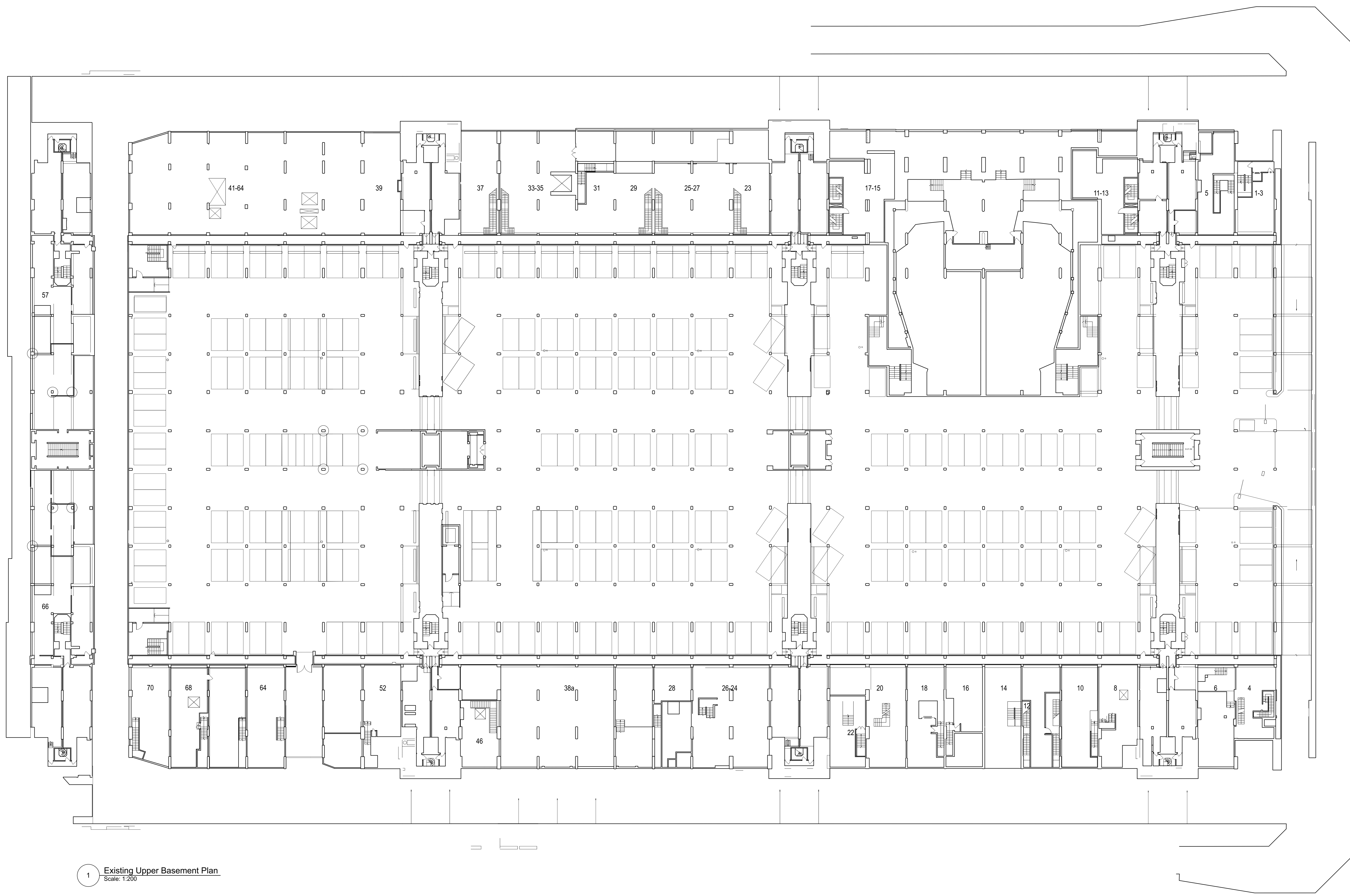
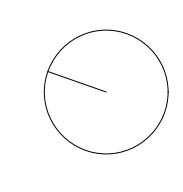
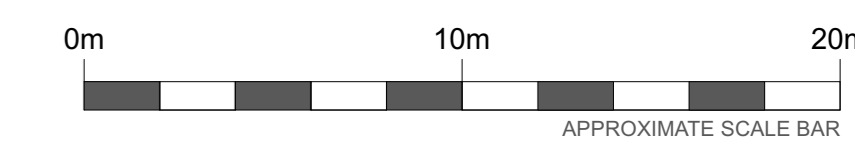


This drawing is the copyright of Axiom Architects. It is for planning application purposes only and may not be reproduced in whole or in part without permission. Drawings lodged for planning approval may be reproduced by the Planning Authority in accordance with the 'Copyright (Material Open to Public Inspection) (Marking of Copies of Plans and Drawings) Order 1990' and must carry the relevant copyright restriction note. Scaling from this drawing should only be carried out from a print at the scale and size specified within the title block. Responsibility for ensuring correct size reproduction remains with the reader.



1 Existing Upper Basement Plan  
Scale: 1:200

B	06/07/23	For planning	FP
A	23/05/23	Stage 2 issue	FP
Rev	Date	Description	By Chk

**AXIOM ARCHITECTS**  
 Morelands 5-27 Old Street London EC1V 9HL  
 Tel. 0207 421 8866 www.axiomarchitects.co.uk

**Client**  
LAZARI INVESTMENTS LTD

**Project**  
BRUNSWICK CENTRE  
BLOOMSBURY  
LONDON, WC1N 1BS

**Drawing**  
Existing Upper Basement Plan

Scale	Date	Drawn	Checked
1:200	15/11/2022	FP	JM
Drawing No.			Revision

**4742-PA1-009 B**

Status  
PLANNING