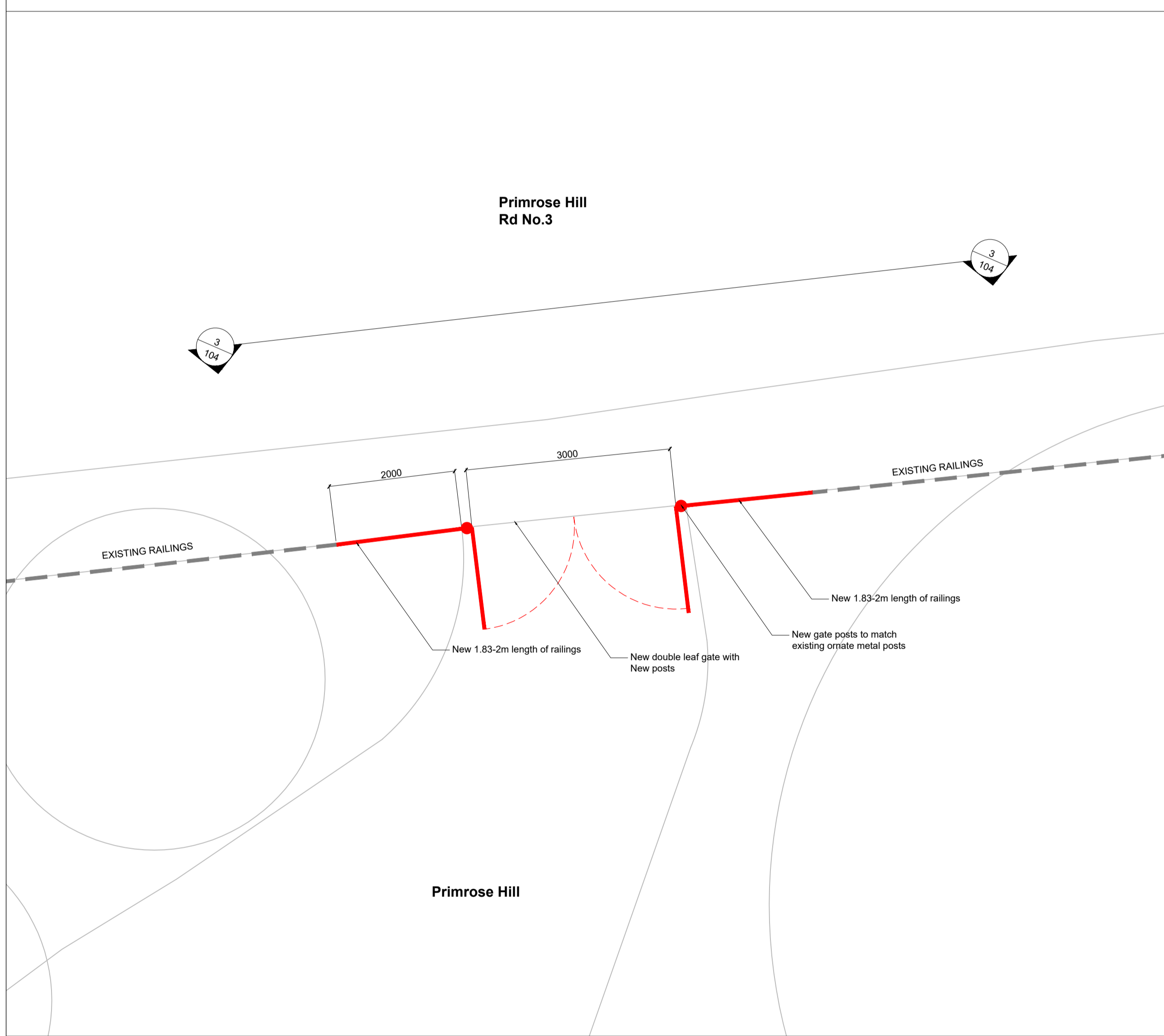


Key Plan
Scale 1:5000

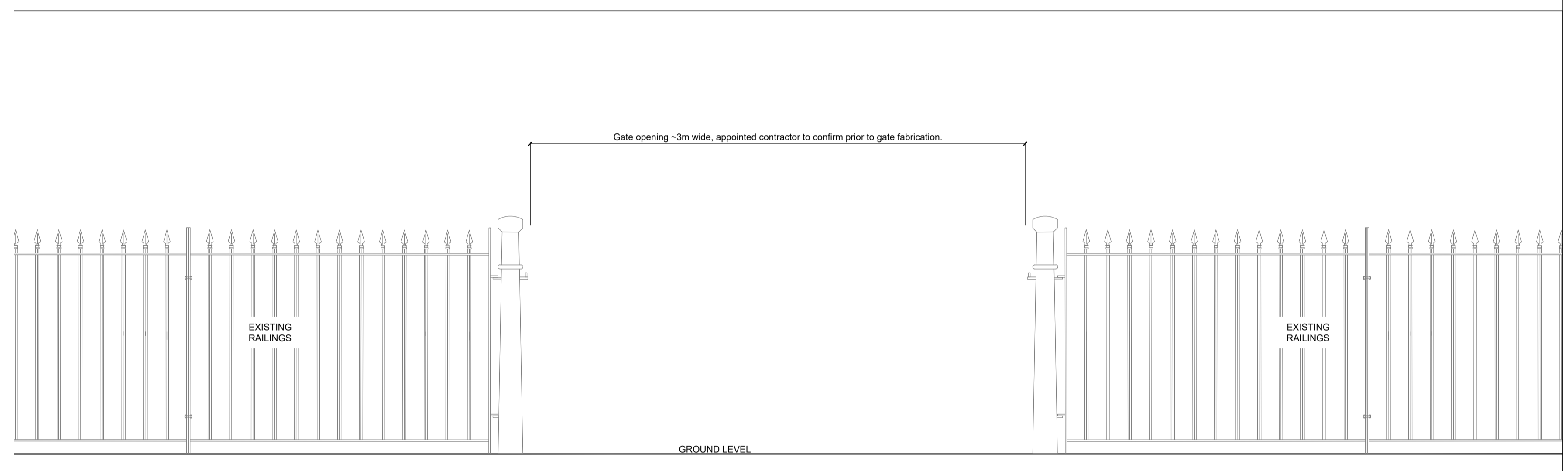


Photograph - Gate 4: Primrose Hill Rd No.3
View from within park

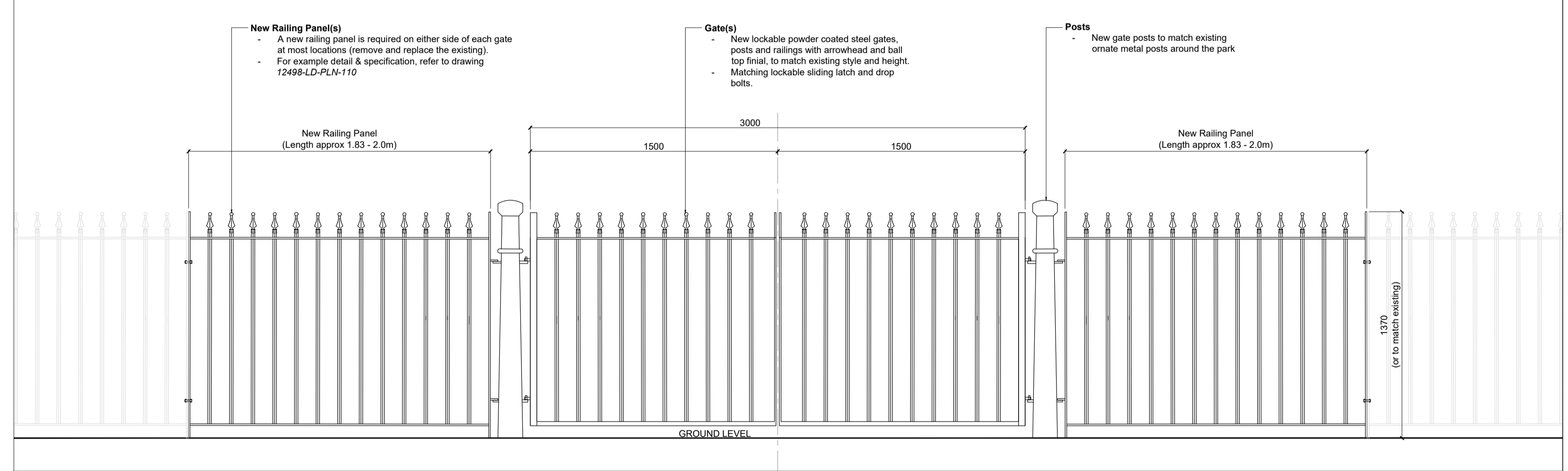
Gate 4: Primrose Hill Rd No.3
Double Leaf Vehicle Gate - total 3.0m wide. Likely requires new posts.
2m width railing panel LHS and RHS - 1.2m high arrowhead with balltop finials



1 GA Plan
Scale 1:50



2 Existing Elevation 1/104
Scale 1:20

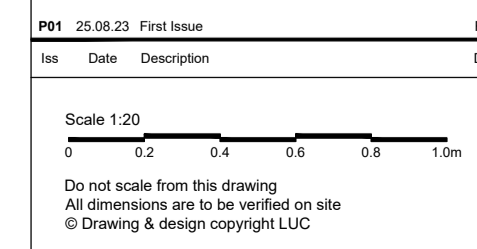


3 Gate Elevation 2/104
Scale 1:20

- KEY**
- Existing Railing Retained
 - Proposed New Railing
 - Proposed New Gate
 - Existing Post Retained
 - Proposed bollard
 - Proposed New Gate Post

Notes
Dimensions provided are approximate and are to be checked by the appointed contractor on site so that the sizes of new gates and fencing provided are suitable for each location.
Contractor to survey path gradients & openings to ensure gate operation works as intended.

For General Arrangement drawings for each gate entrance please refer to the following:
Gate 1 - 12498-LD-PLN-101
Gate 2 - 12498-LD-PLN-102
Gate 3 - 12498-LD-PLN-103
Gate 4 - 12498-LD-PLN-104
Gate 5 - 12498-LD-PLN-105
Gate 6 - 12498-LD-PLN-106
Gate 7 - 12498-LD-PLN-107
Gate 8 - 12498-LD-PLN-108
Gate 9 - 12498-LD-PLN-109
For Typical Railing Details & Specification refer to 12498-LD-PLN-110



LUC Bristol, Edinburgh, Glasgow, London, Manchester
landuse.co.uk

Project: **Primrose Hill Perimeter Gates**
Client: **The Royal Parks**
LUC Job Nr: 12498
Scale: @A1
Status: As shown
Planning

Drawing Title: **General Arrangement Plan Gate 4 (Primrose Hill Rd No.3)**
Drawing Nr: 12498-LD-PLN-104
Issue: P01