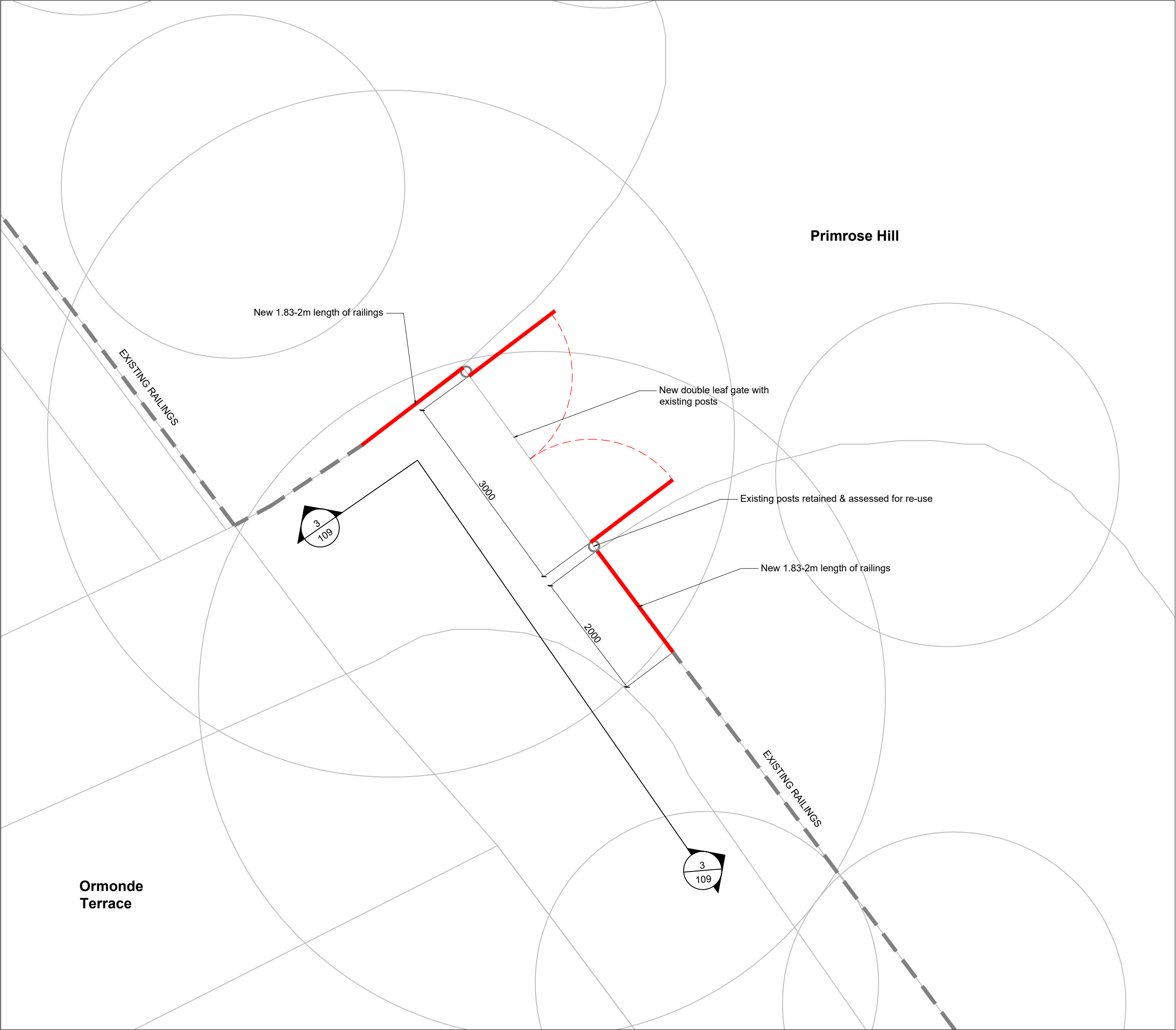


Key Plan
Scale 1:5000

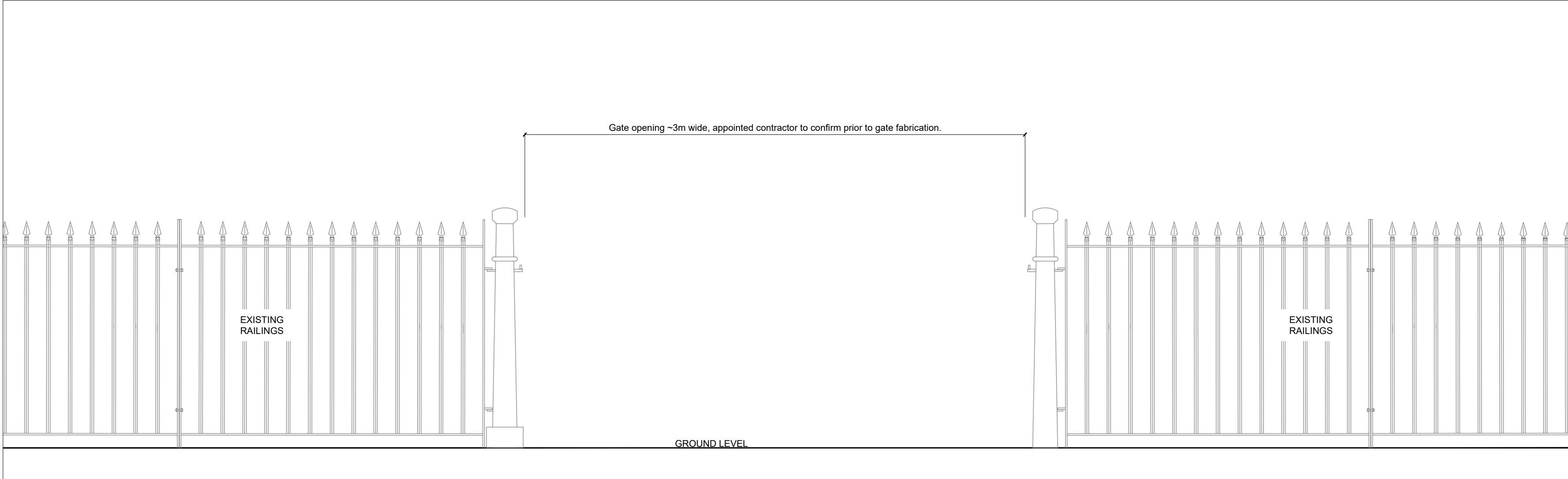


Photograph - Gate 9: Ormonde Terrace
View from within park

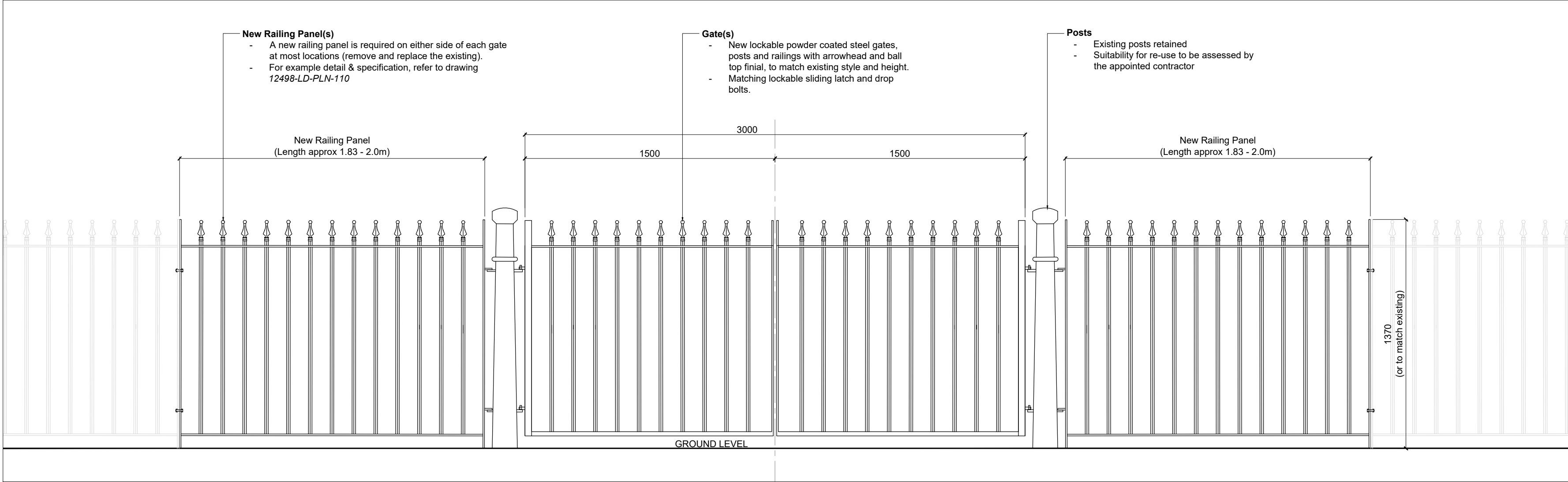
Gate 9: Ormonde Terrace
Double Leaf Vehicle Gate - total 3.0m wide. Propose re-use existing posts.
2m width railing panel LHS and RHS - 1.2m high arrowhead with balltop finials



GA Plan
Scale 1:50



Existing Elevation 1/109
Scale 1:20



Gate Elevation 2/109
Scale 1:20

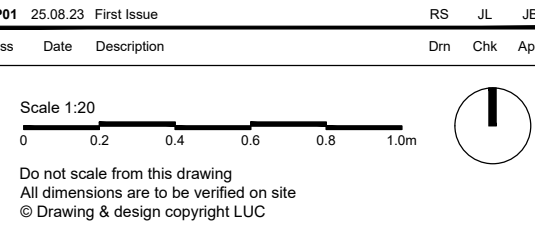
KEY	
	Existing Railing Retained
	Proposed New Railing
	Proposed New Gate
	Existing Post Retained
	Proposed bollard
	Proposed New Gate Post

Notes
Dimensions provided are approximate and are to be checked by the appointed contractor on site so that the sizes of new gates and fencing provided are suitable for each location.

Contractor to survey path gradients & openings to ensure gate operation works as intended.

For General Arrangement drawings for each gate entrance please refer to the following:
Gate 1 - 12498-LD-PLN-101
Gate 2 - 12498-LD-PLN-102
Gate 3 - 12498-LD-PLN-103
Gate 4 - 12498-LD-PLN-104
Gate 5 - 12498-LD-PLN-105
Gate 6 - 12498-LD-PLN-106
Gate 7 - 12498-LD-PLN-107
Gate 8 - 12498-LD-PLN-108
Gate 9 - 12498-LD-PLN-109

For Typical Railing Details & Specification refer to 12498-LD-PLN-110



LUC	Bristol Edinburgh Glasgow London Manchester	landuse.co.uk	
	Project Primrose Hill Perimeter Gates		
	Client The Royal Parks		
LUC Job Nr 12498	Scale @A1 As shown	Status Planning	
Drawing Title General Arrangement Plan Gate 9: Ormonde Terrace			
Drawing Nr 12498-LD-PLN-109			Issue P01