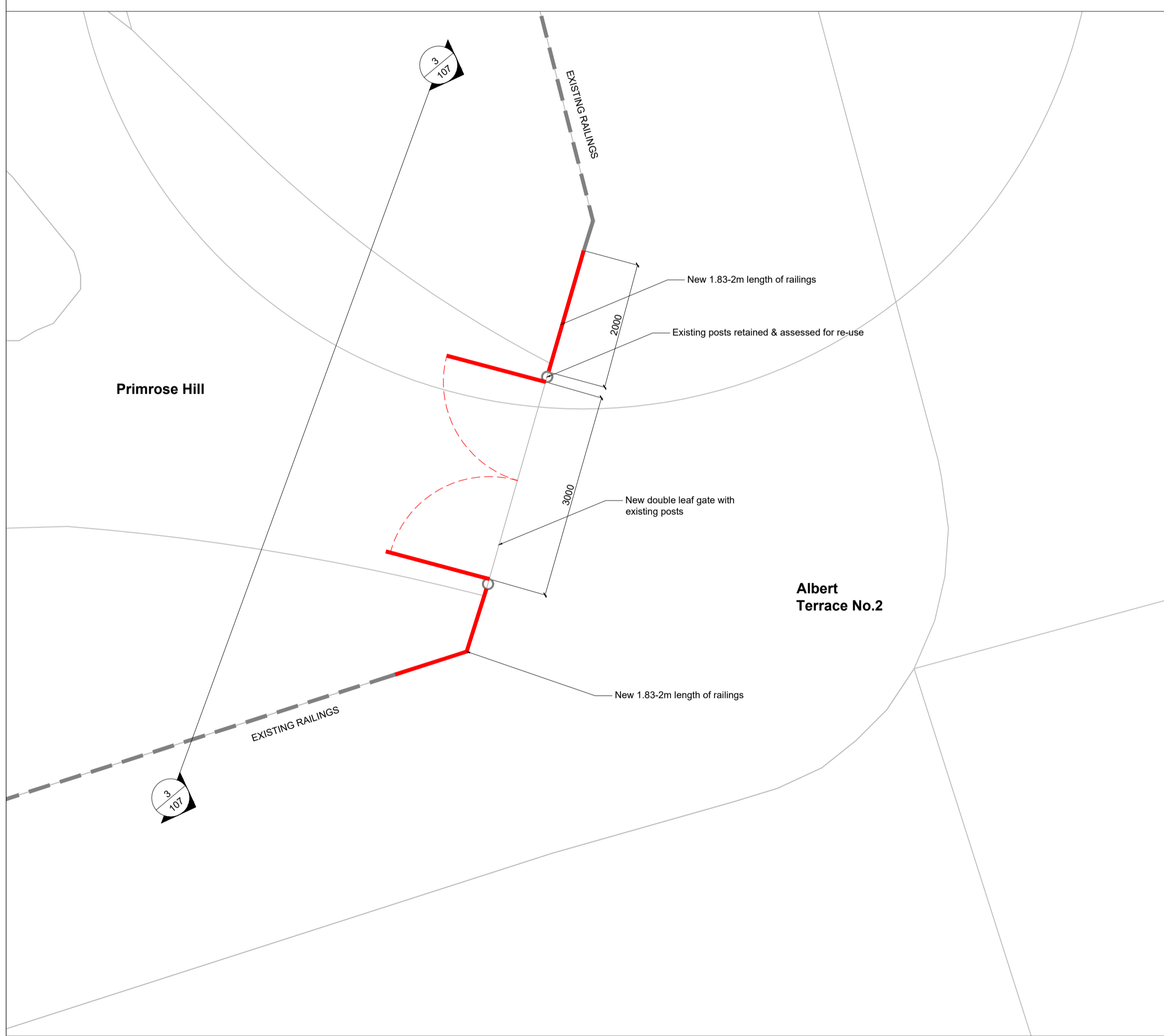


Key Plan  
Scale 1:5000

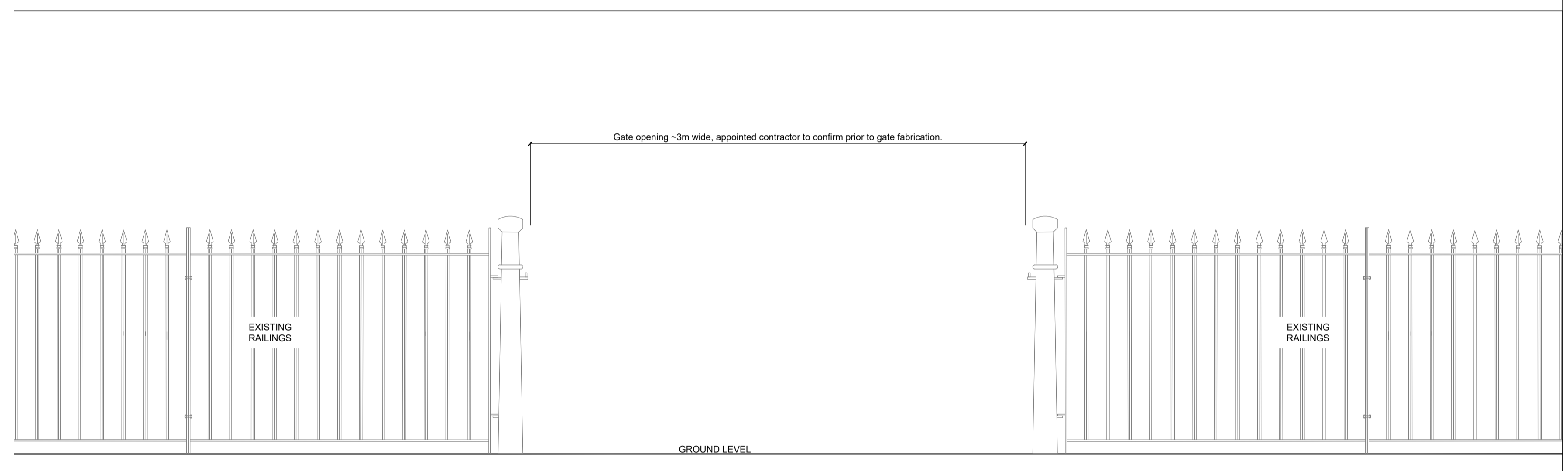


Photograph - Gate 7: Albert Terrace No.2  
View from within park

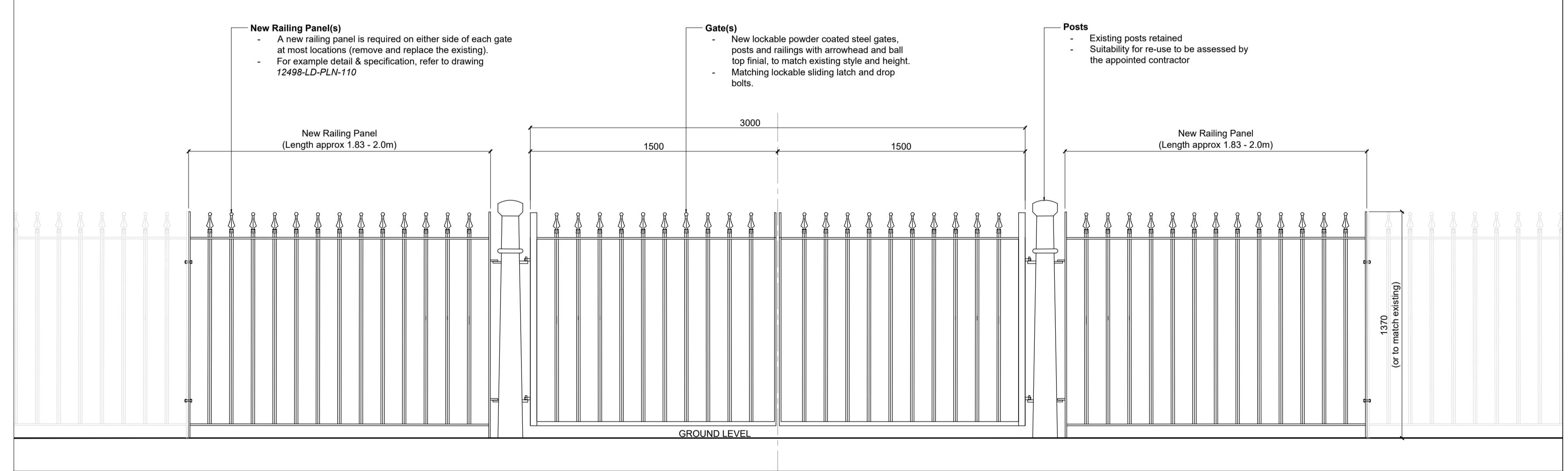
**Gate 7: Albert Terrace No.2**  
Double Leaf Vehicle Gate - total 3.0m wide. Propose re-use existing posts.  
2m width railing panel LHS and RHS - 1.2m high arrowhead with balltop finials



1 GA Plan  
Scale 1:50



2 Existing Elevation 1/107  
Scale 1:20

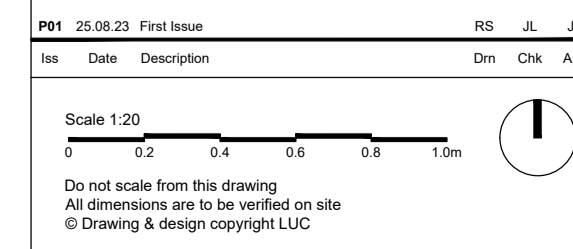


3 Gate Elevation 2/107  
Scale 1:20

- KEY**
- Existing Railing Retained
  - Proposed New Railing
  - Proposed New Gate
  - Existing Post Retained
  - Proposed bollard
  - Proposed New Gate Post

**Notes**  
Dimensions provided are approximate and are to be checked by the appointed contractor on site so that the sizes of new gates and fencing provided are suitable for each location.  
Contractor to survey path gradients & openings to ensure gate operation works as intended.

**For General Arrangement drawings for each gate/entrance please refer to the following:**  
Gate 1 - 12498-LD-PLN-101  
Gate 2 - 12498-LD-PLN-102  
Gate 3 - 12498-LD-PLN-103  
Gate 4 - 12498-LD-PLN-104  
Gate 5 - 12498-LD-PLN-105  
Gate 6 - 12498-LD-PLN-106  
Gate 7 - 12498-LD-PLN-107  
Gate 8 - 12498-LD-PLN-108  
Gate 9 - 12498-LD-PLN-109  
**For Typical Railing Details & Specification refer to 12498-LD-PLN-110**



**LUC** Bristol, Edinburgh, Glasgow, London, Manchester  
landuse.co.uk

Project: **Primrose Hill Perimeter Gates**  
Client: **The Royal Parks**  
LUC Job Nr: 12498  
Scale: @A1  
Status: As shown  
Planning

Drawing Title: **General Arrangement Plan Gate 7: Albert Terrace No.2**  
Drawing Nr: **12498-LD-PLN-107**  
Issue: **P01**