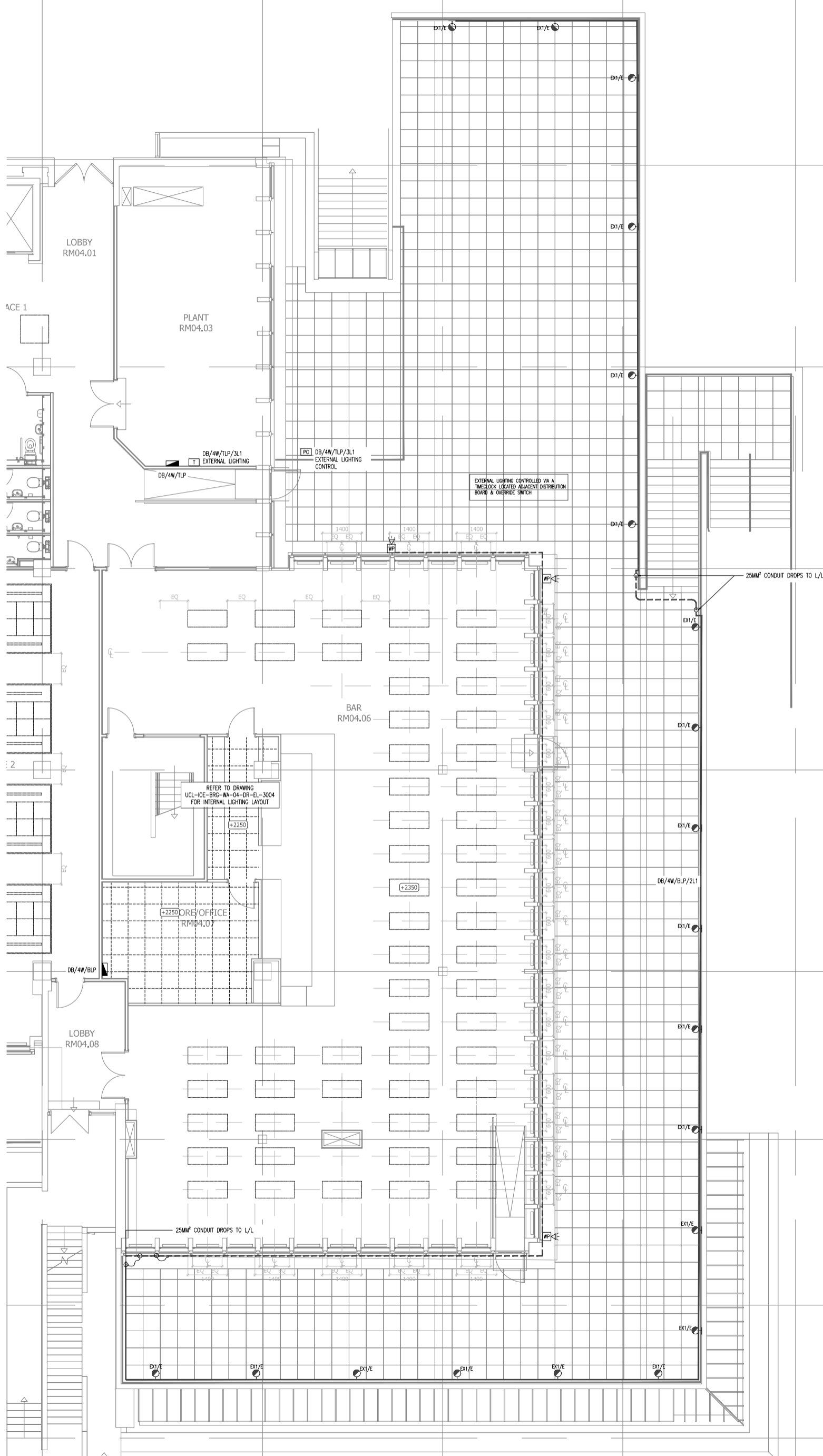


118 119 120 121 122



- LEGEND**
- A SLP66/1050/1L16.3W/DI/DM8/CC/WH/840
 - A1 SLP66/1500/1L23.3W/DI/DM8/CC/WH/840
 - A3 SP165/SLSU068/1500/28W/DM8/WH/CC/840
 - A11 SP165/SLSU068/800/13W/DM8/WH/CC/840
 - A12 SP165/SLSU068/1200/20W/DM8/WH/CC/840
 - /S: SUSPENDED FITTING
 - B: MIN/CS/10W/W/DM8/WH/840
 - F: CR212/36W/SSC/840
 - L: MLM66/37W/SP/840
 - _D RECESSED CIRCULAR LED DOWNLIGHT
 - _{EM1} SURFACE MOUNTED NON MAINTAINED EMERGENCY DOWNLIGHT
 - _{EM2} RECESSED CIRCULAR NON MAINTAINED EMERGENCY DOWNLIGHT
 - EXIT ILLUMINATED SUSPENDED LED EMERGENCY EXIT SIGN C/W RUNNING MAN PICTOGRAM
 - F IP65 RATED SURFACE MOUNTED LINEAR LUMINAIRE
 - EX1/E/IP65 EXTERNAL WALL MOUNTED LINEAR LUMINAIRE C/W HF CONTROL GEAR AND POLYCARBONATE DIFFUSER FITTED WITH 3 HOURS EMERGENCY BATTERY PACK AND DALI EM PRO INVERTER
 - P1 PENDANT LUMINAIRE
 - P2 PENDANT LUMINAIRE
 - P3 PENDANT LUMINAIRE
 - P4 PENDANT LUMINAIRE
 - P6 PENDANT LUMINAIRE
 - EX1/E IP65 RATED EXTERNAL SURFACE MOUNTED LUMINAIRE
 - EX1/EE EX1/E BUT FITTED WITH 3 HOURS EMERGENCY BATTERY PACK
 - EX2/E IP65 RATED EXTERNAL SURFACE MOUNTED NON MAINTAINED EMERGENCY LUMINAIRE
 - SC WALL MOUNTED SCENE SELECT UNIT
 - SW LIGHT SWITCH ('X' DENOTES NO. OF GANGS)
 - 2TS TWO WAY LIGHT SWITCH
 - AD ABSENCE DETECTOR
 - PH PRESENCE DETECTOR
 - DS COMBINED DAYLIGHT SENSOR/PRESENCE DETECTOR
 - PD WALL MOUNTED MICROSWIRE PRESENCE DETECTOR
 - CV DENOTES ITEM LOCATED WITHIN CEILING VOID
 - WP DENOTES WEATHERPROOF ITEMS
 - LCM PLUGGABLE DALI LIGHTING CONTROL MODULE
 - HCM HARDWIRED DALI LIGHTING CONTROL MODULE
 - ACP AREA CONTROL PANEL
 - ISOLATOR FOR MCCP
 - DISTRIBUTION BOARD
 - MCCB SPLITTER PANEL
 - S SMOKE DETECTOR
 - M MULTI DETECTOR
 - VA/PA VA/PA SPEAKER
 - SPK SPEAKER/BEACON
 - FAR FIRE ALARM BREAKGLASS UNIT
 - FAR FIRE ALARM REPEATER PANEL
 - VAD VISUAL ALARM DEVICE (VAD) BEACON
 - FIU FIRE ALARM INTERFACE UNIT
 - WP DENOTES WEATHERPROOF ITEMS
 - T TIME CLOCK
 - PC PHOTO CELL
 - 25MM² CONDUIT UNDER PAWING/STONES
 - 25MM² CONDUIT ON WALL

