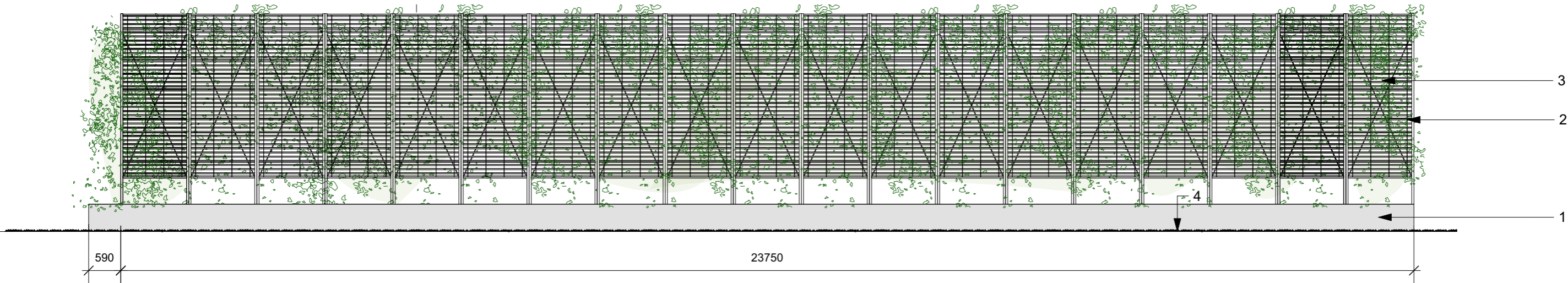
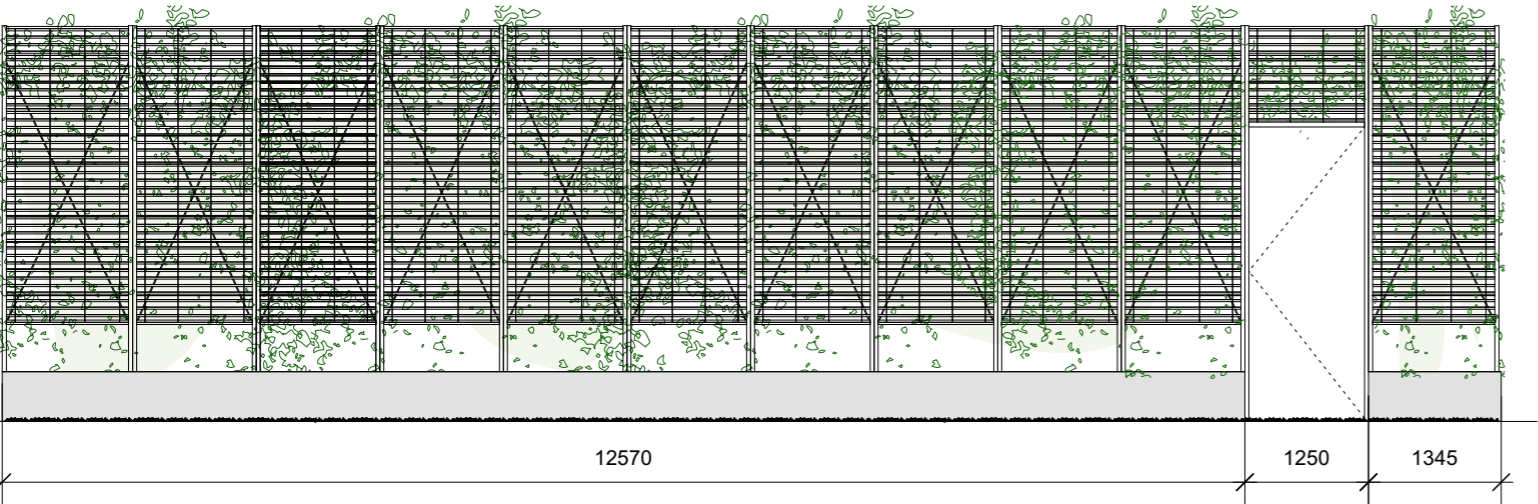


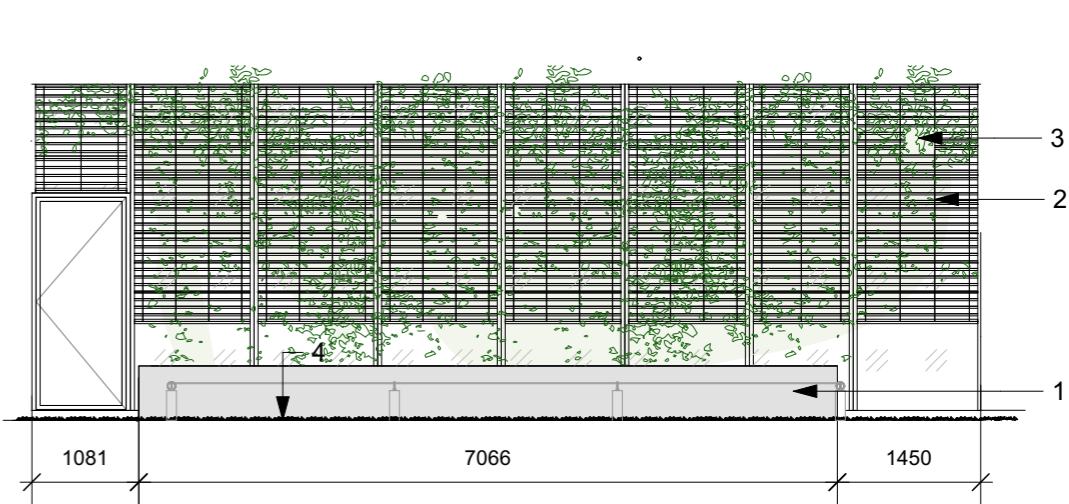
Planter elevation A and B (mirrored) 1:75 @A3



Planter elevation C 1:75 @A3

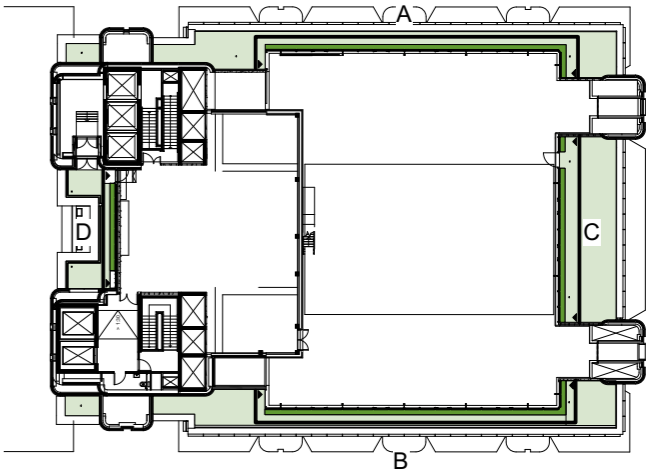


Planter elevation D 1:75 @A3



Key

- 1 Galvanised steel planter, 6mm, as Q31/297 with 25mm folded top
- 2 Stainless steel cable trellis system, refer to Architects specification
- 3 Proposed planting, refer to Planting plan Level 10-11 BEL-BHS-ZZ-TP-DR-LA-0207
- 4 Green roof system as Q37/130 Radmat MedO Wildflower mat



Location plan 1:600 @A3

REV	DATE	DESCRIPTION	CKD				Project	Belgrove House	
A	06/06/2022	Stage 3	VG	<div>NOTES:</div> <div>1. Do not scale from this drawing.</div> <div>2. All dimensions provided on this drawing are indicative. Contractor to carry out detailed site survey and site investigation of all significant built features (such as upstand, wall foundations, subterranean elements, manholes etc.) prior to finalising shop drawings/cutting schedules and prior to ordering final materials.</div> <div>3. Final coordination of proposed surface drainage elements to be carried out in conjunction with project's Civil Engineers. All below ground drainage information to Civil Engineers' details.</div> <div>4. Refer to BHSLA drawing intent details and to structural Engineers' drawings and specification for all planter, seats, and paving installation details.</div> <div>5. Detailed cutting schedule to be prepared by Contractor following the site survey and approved by BHSLA and AHMM, prior to placing stone slab order.</div> <div>6. Construction detail for planters, and seats to be developed and confirmed by a specialist sub-contractotrs, approved by BHSA and AHMM.</div>	<div><div></div><div>N</div></div>	<b>Bradley-Hole Schoenaich</b>		Client	Precis Advisory
B	20/06/2022	Stage 3	VG			Landscape		Drg title	[Level 10 planter elavations]
C	19/08/2022	MS3	VG			Greystone House Sudbrook Lane Richmond TW10 7AT +44 (0)20 8939 1749 info@bhsia.co.uk		Drg nr	BEL-BHS-ZZ-10-DR-L-00356
D	25/11/2022	Stage 4A tender	EP					Scale	1:20 @A3
P01	17/03/2023	Stage 4B						Status	S3 - For review and comment
								Drawn	EB