

Landscape Maintenance and  
Management Strategy

## Belgrove House

**BEL-BHS-ZZ-XX-RP-L-00806**

RIBA Stage 4b

Status: Clearing planning condition 25

30/08/2023

## Vertical Greening Level 10

### Relevant drawings and specification

Information on the planter system and vertical greening on level 10 can be found in the following documents, appended.

**BHSLA drawings:**

BEL-BHS-ZZ-10-DR-L-00106  
BEL-BHS-ZZ-10-DR-L-00355  
BEL-BHS-ZZ-10-DR-L-00356  
BEL-BHS-ZZ-ZZ-DR-L-00207

**Relevant landscape specification clauses are:**

Q28/108 Container planting soil system  
Q28/338 Container growing media  
Q28 /356 Composted mulch layer  
Q37/360 Filter membrane  
Q37/351 Drainage mat  
Q31 297 PL6 Prefabricated plant containers (CDP item)  
Q31 420 Climbing plants to Level 10/11 and Winter Garden

**Landscape Maintenance specification clauses:**

Q35 general clauses  
Q35 625 Climbing plants

**Automated irrigation system:**

Please refer to tender documentation from Waterscapes Ltd. (Irrigation specialists)

# Maintenance Strategy for twining plants (climbers) to level 10 plant screen

## Maintenance responsibilities and annual schedule

### Maintenance Responsibilities for level 10 vertical greening:

- Monitoring automated irrigation system
- Checking trellis system - tensioning wires if required
- Pruning where growth needs to be restricted (e.g doors)
- Monitoring growth
- Removal of dead plant material
- Plant replacement if required

### Planting:

- Climbers are to be pruned to a max height to which an operator can tie in the shoots prior to planting, remove them from the trellis, and attach shoots spread out to cover a width of 600mm with biodegradable twine.

### Maintenance:

- Climbers should be tied to a height that can be reached from the ground without stepping on planters. A 1.75 tall operator working from the floor plate should be able to reach up to a height of approx. 2.3 m.
- It is assumed that the climbers will scramble through the trellis above the height that can be reached from the ground and that no maintenance will be carried out above the height that can be safely reached from the floor plate.
- Plants will be 'wind pruned'.
- Tools must be tethered for safety reasons while working on level 10.

### Plant replacement:

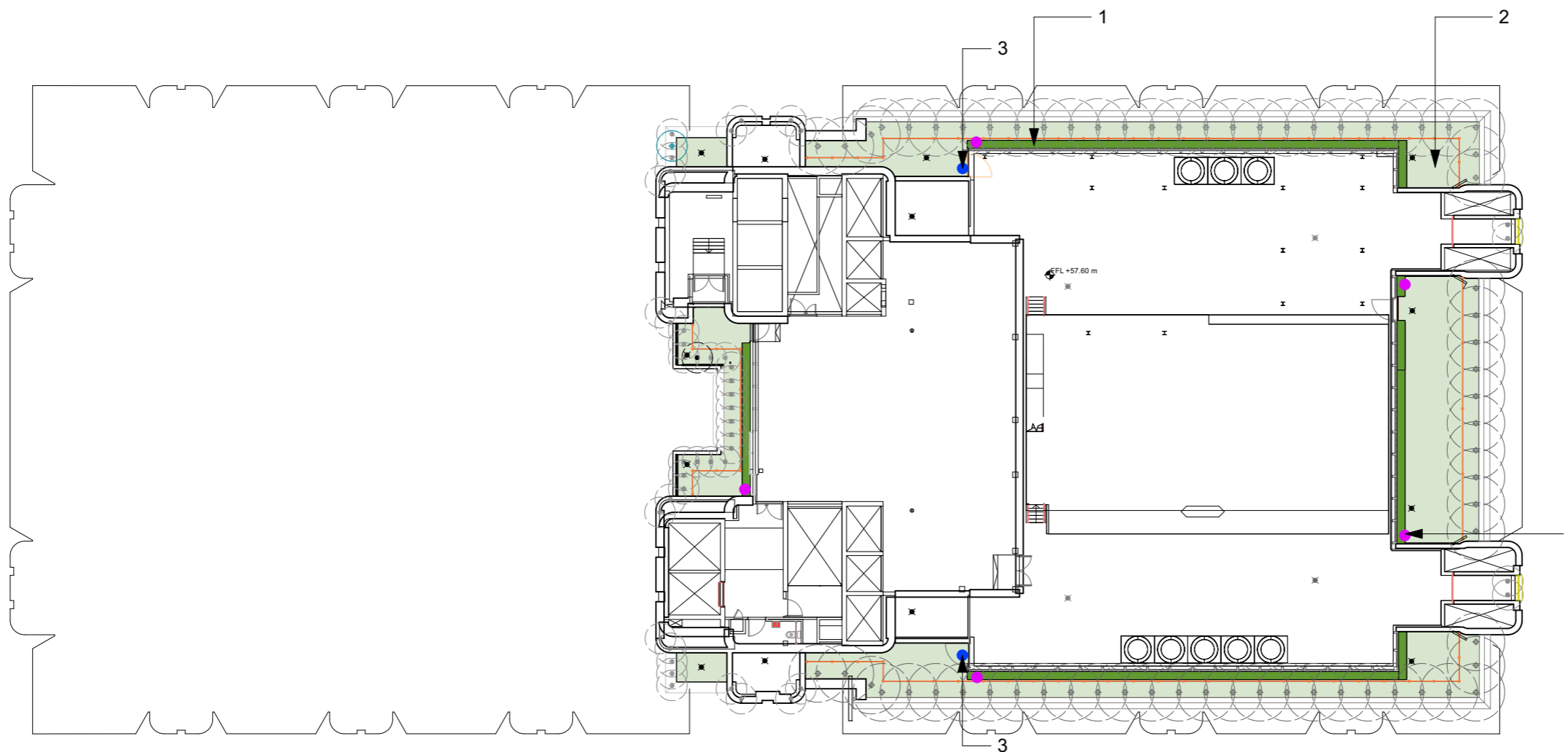
- In case plant replacement is required, the climber can be cut and pulled out from the upper trellis section.

### Health and safety measures

- A man safe system is in place to allow for full restraint while working on the vertical greening.
- Maintenance work to be done from the floor plate only.
- Tethering tools are to be required.

Description	January	February	March	April	May	June	July	August	September	October	November	December
<b>1.0 Climbers</b>												
1.1 Hand weed as for other types of ornamental planting, once a month if required.												
1.2 Routine pruning to remove unwanted growth adjacent to external structures. Removal of dead plant material.												
1.3 Horticultural pruning to increase display of flowers/fruit.												
1.4 Inspection of supports, fastening, repair and tying-in plants, where plants are not self-supporting and a structure is needed. Carry out at same time as horticultural pruning.												

## Appendix



**Key**

- 1 Raised planter, 6mm galvanised steel with climbing plants growing on a support frame with stainless steel cables **as Q31/297**
- 2 Green roof, Radmat MedO Wildflower mat, 120mm substrate **as Q37/130**
- 3 External tap, approximate location of external tap, details and connection to MEP Engineers and Architects details
- 4 Irrigation connection, detailed by others

REV	DATE	DESCRIPTION	CKD
C	08/04/2022	MS2	VG
D	20/06/2022	Stage 3	VG
E	19/08/2022	MS3	VG
F	25/11/2022	Stage 4A tender	EP
P01	17/03/2023	Stage 4B tender	EP

**NOTE:**

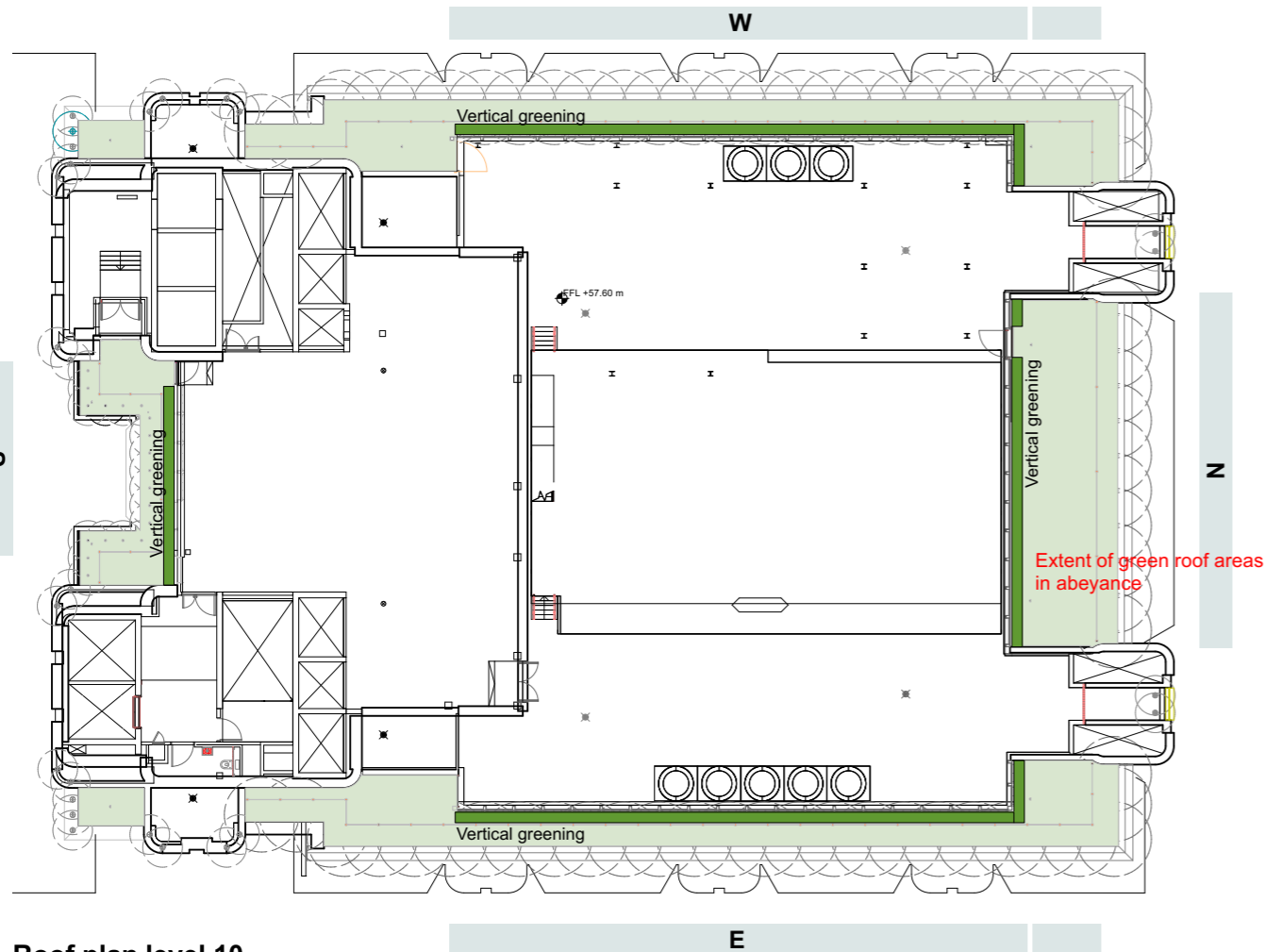
1. Do not scale from this drawing
2. All setting out, levels and dimensions to be agreed on site.
3. This drawing must be read with the relevant specification clauses and detail drawings prepared by BHSL and other relevant Consultants.
4. Order of construction and setting out to be agreed on site.
5. This drawing is copyright protected and may not be reproduced in whole or part without written authority.
6. All Dimensions are in millimetres unless otherwise stated



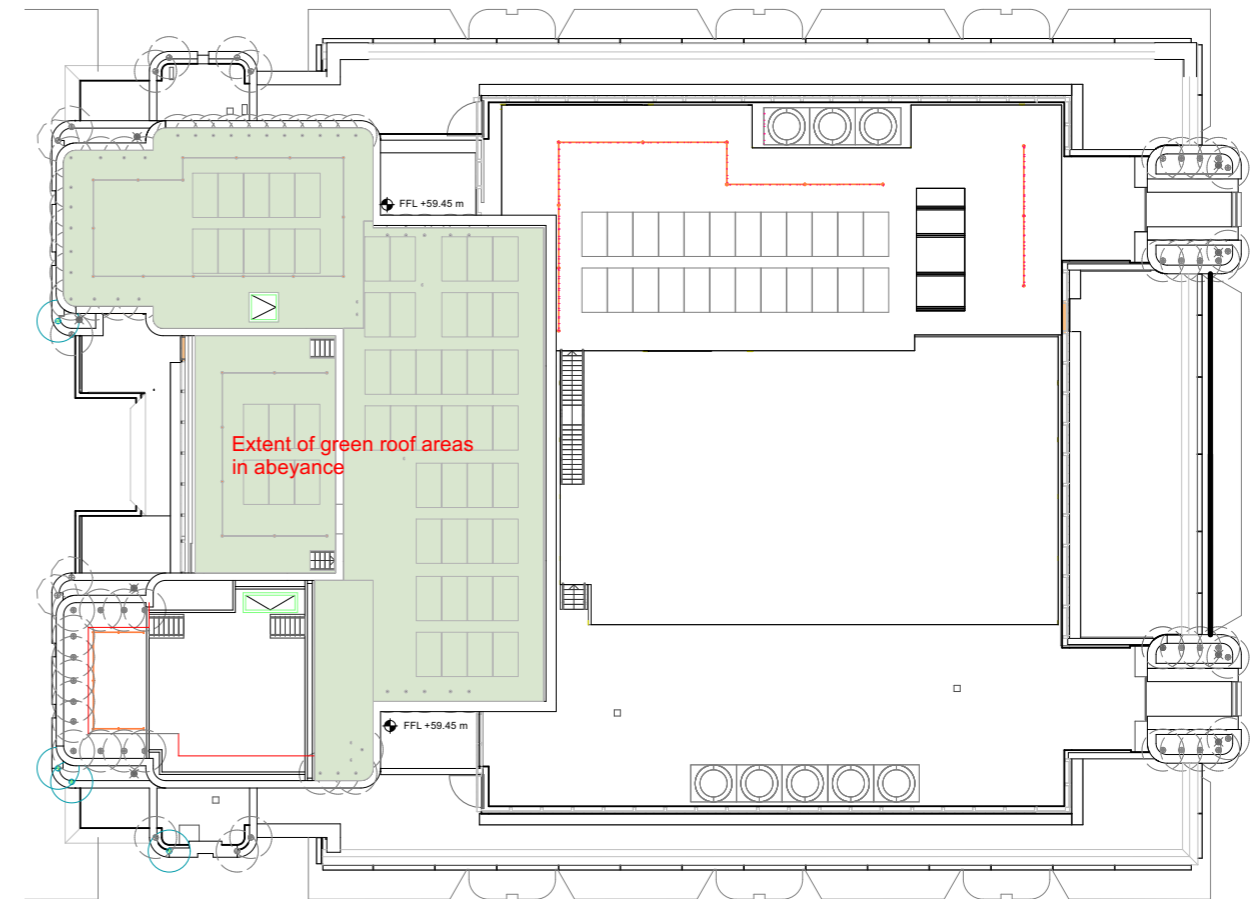
**Bradley-Hole Schoenaich**  
Landscape

Greystone House  
Sudbrook Lane  
Richmond TW10 7AT  
+44 (0)20 8939 1749  
info@bhsla.co.uk

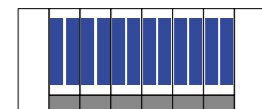
Project	Belgrove House
Client	Precis Advisory
Drg title	LEVEL 10
Drg nr	BEL-BHS-ZZ-10-DR-L-00106
Scale	1:300 @A3
Status	Stage 4B tender
Drawn	EB
Checked	EP



Roof plan level 10



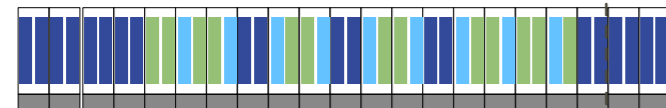
Roof plan level 11



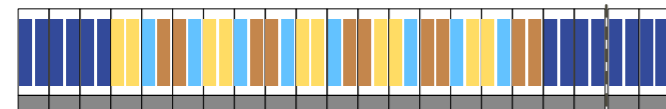
Vertical greening - South elevation diagram



Vertical greening - North elevation diagram



Vertical greening - West elevation diagram



Vertical greening - East elevation diagram

LEVELS 10-11 ROOF PLANTING PLAN						
RB-Root balled, BR-Bare root, CG-Container grown						
All plants to comply with National Plants Specification, BS 3936, BS 4043 and HTA standards						
Botanical Name	Cat	Pot size (L)	Height (cm)	Spread (cm)	Planting density/spacing	No
LEVEL 10 and 11 Green roofs						
Radmat MedO Wildflower mat					Extent of green roof areas in abeyance	
LEVEL 10 Vertical greening					81 lin m of vertical greening	
<b>Note: All climbers should have a V shape frame (80cm width at top) attached and spread out.</b>						
Hedera helix	CG	15L	200	60	spaced @ 625cm betw centres, grown on V shaped trellis	22
Holboellia latifolia	CG	15L	200	60	spaced @ 625cm betw centres, grown on V shaped trellis	17
Trachelospermum jasminoides	CG	15L	200	60	spaced @ 625cm betw centres, grown on V shaped trellis	52
Humulus lupulus	CG	15L	200	60	spaced @ 625cm betw centres, grown on V shaped trellis	17
Parthenocissus tricuspidata	CG	15L	200	60	spaced @ 625cm betw centres, grown on V shaped trellis	10

REV	DATE	DESCRIPTION	CKD
B	20/06/2022	Stage 3	VG
C	19/08/2022	MS3	VG
D	25/11/2022	Stage 4A tender	EP
P01	17/03/2023	Stage 4B tender	EP
P02	14/08/2023	Stage 4B tender	EP

- NOTE:
- Do not scale from this drawing
  - All setting out, levels and dimensions to be agreed on site.
  - This drawing must be read with the relevant specification clauses and detail drawings prepared by BHSL and other relevant Consultants.
  - Order of construction and setting out to be agreed on site.
  - This drawing is copyright protected and may not be reproduced in whole or part without written authority.
  - All Dimensions are in millimetres unless otherwise stated



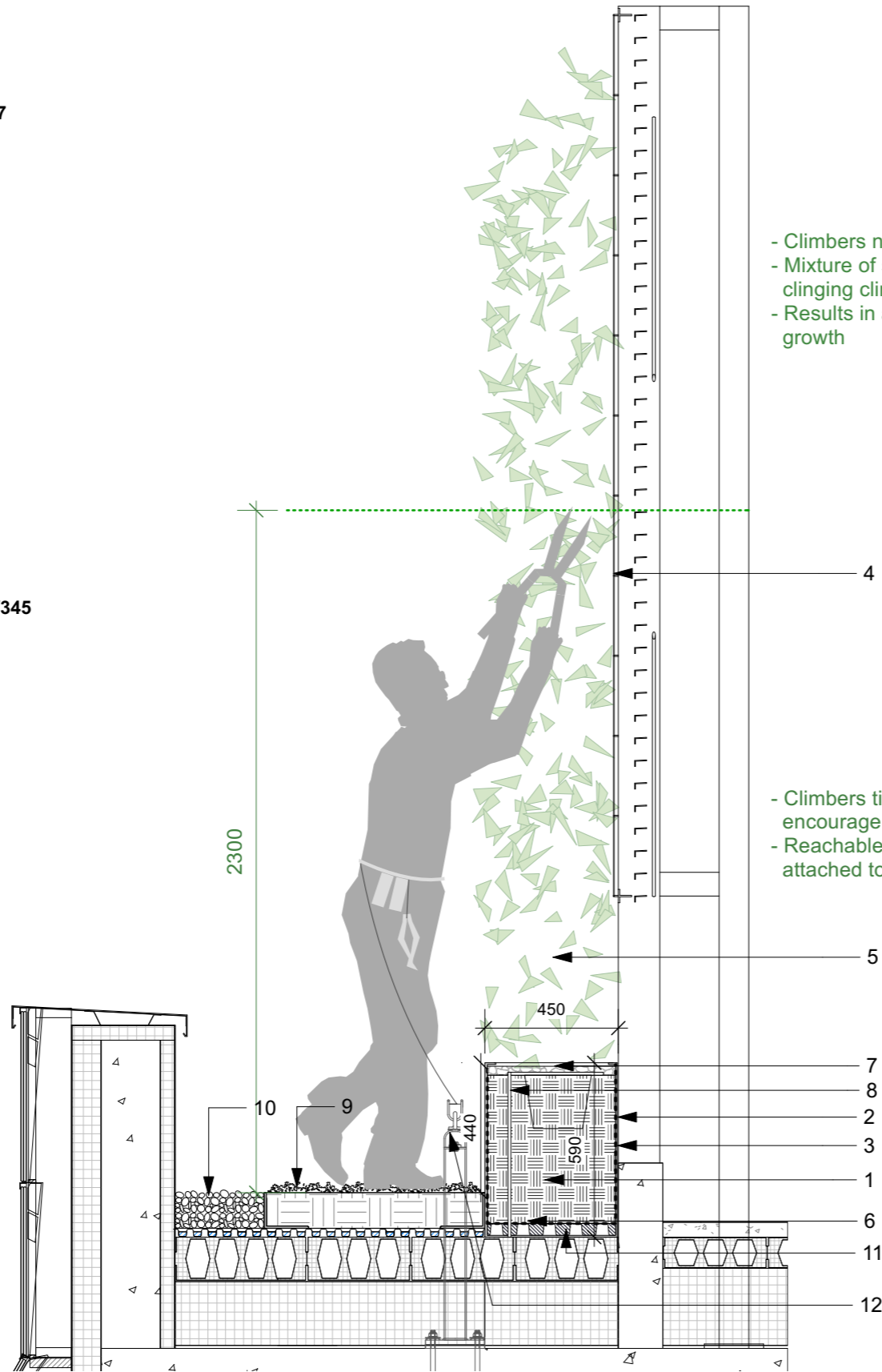
**Bradley-Hole Schoenaich**  
Landscape

Greystone House  
Sudbrook Lane  
Richmond TW10 7AT  
+44 (0)20 8939 1749  
info@bhsla.co.uk

Project	Belgrove House
Client	Precis Advisory
Drg title	PLANTING PLAN LEVELS 10 AND ROOF
Drg nr	BEL-BHS-ZZ-ZZ-DR-L-00207
Scale	1:300 @A3
Status	Stage 4B tender
Drawn	EB
Checked	EP

**Key**

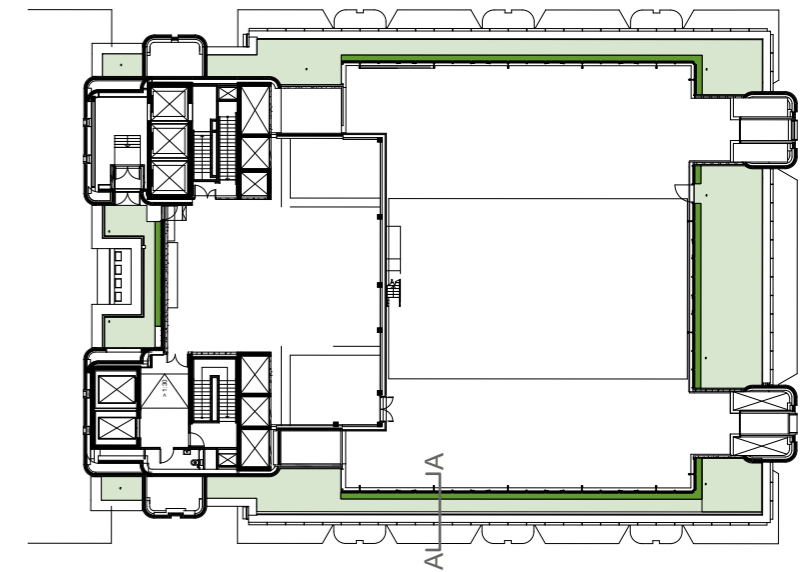
- 1 Bauder intensive substrate as Q28/104
- 2 Galvanised steel planter, 6mm, as Q31/297 with 25mm folded top
- 3 Filter membrane as Q37/360
- 4 Stainless steel cable trellis system, refer to Architects specification
- 5 Proposed planting, refer to Planting plan Level 10-11 BEL-BHS-ZZ-TP-DR-LA-0207
- 6 Drainage mat as Q37/351 DSE 40 Drainage & Protection Layer infilled with Mineral Drain
- 7 Composted mulch layer as Q28/356
- 8 Automatic irrigation, refer to irrigation specialist
- 9 Green roof system as Q37/130 Radmat MedO Wildflower mat
- 10 Gravel strip, loose gravel type tbc as Q28/345
- 11 Outlet pipes for drainage
- 12 Man safe point



- Climbers not tied back to cables  
 - Mixture of species with self clinging climbers  
 - Results in a more natural line of growth

- Climbers tied back to cables to encourage growth  
 - Reachable/ maintainable while attached to mansafe from floor plate

Section A 1:20 @A3



Location plan 1:500

REV	DATE	DESCRIPTION	CKD
A	08/04/2022	MS2	VG
B	06/06/2022	Stage 3	VG
C	19/08/2022	MS3	VG
D	25/11/2022	Stage 4A tender	
P01	17/03/2023	Stage 4B	EP

**NOTES:**  
 1. Do not scale from this drawing.  
 2. All dimensions provided on this drawing are indicative. Contractor to carry out detailed site survey and site investigation of all significant built features (such as upstand, wall foundations, subterranean elements, manholes etc.) prior to finalising shop drawings/cutting schedules and prior to ordering final materials.  
 3. Final coordination of proposed surface drainage elements to be carried out in conjunction with project's Civil Engineers. All below ground drainage information to Civil Engineers' details.  
 4. Refer to BHSLA drawing intent details and to structural Engineers' drawings and specification for all planter, seats, and paving installation details.  
 5. Detailed cutting schedule to be prepared by Contractor following the site survey and approved by BHSLA and AHMM, prior to placing stone slab order.  
 6. Construction detail for planters, and seats to be developed and confirmed by a specialist sub-contractors, approved by BHSA and AHMM.



**Bradley-Hole Schoenaich**  
 Landscape

Greystone House  
 Sudbrook Lane  
 Richmond TW10 7AT  
 +44 (0)20 8939 1749  
 info@bhsla.co.uk

Project	Belgrove House
Client	Precis Advisory
Drg title	[Level 10 planter]
Drg nr	BEL-BHS-ZZ-10-DR-L-00355
Scale	1:20 @A3
Status	S3 - For review and comment
Drawn	EB
Checked	EP