

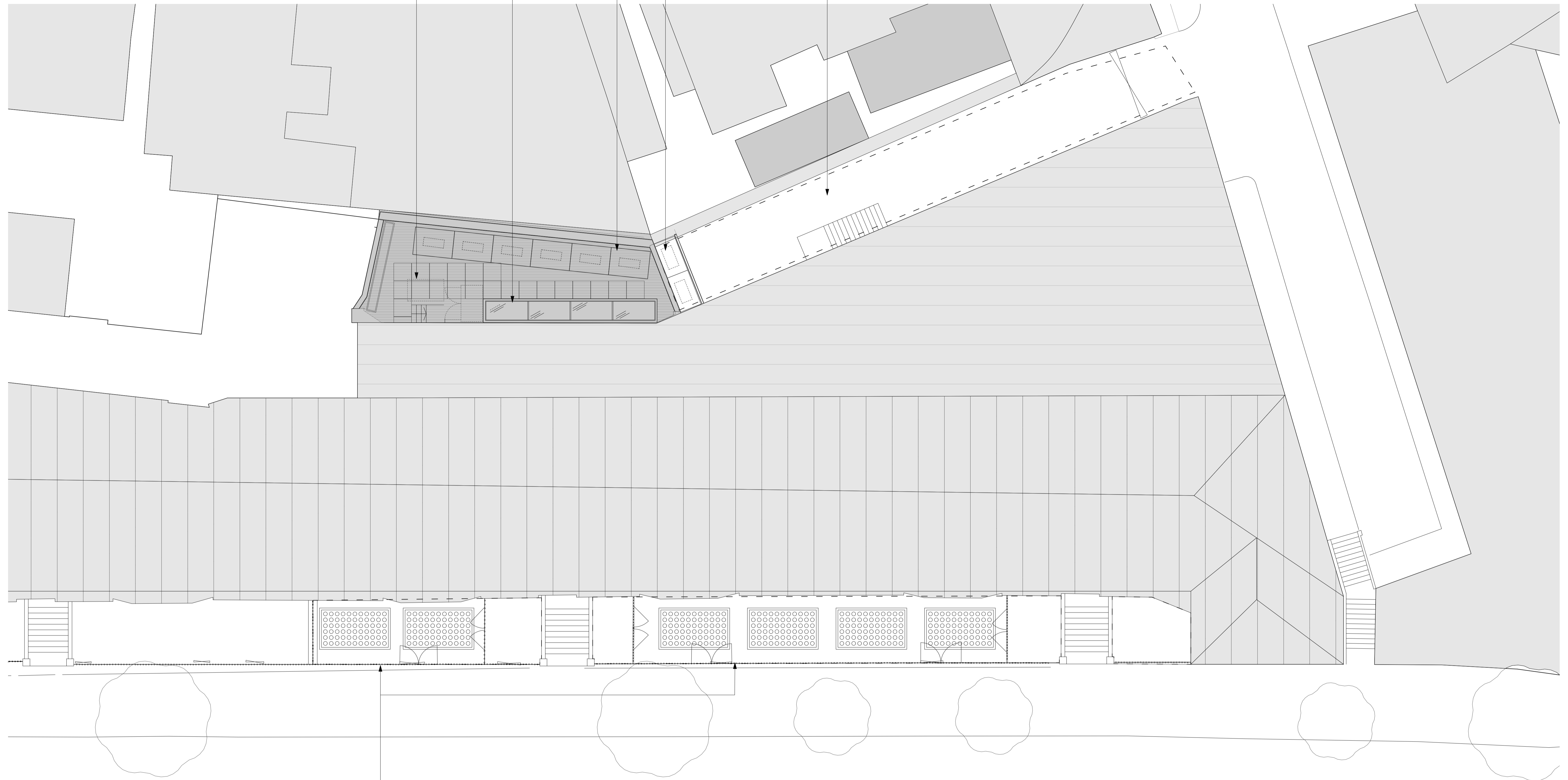
Space for 2no future provision tenant plant units on roof, with high performance acoustic enclosures (ref. 1134_PL-GA-00).

New rooflight to 7 Warner Yard (ref. 1134_PL-GA-00).

6no. new plant units to roof of 7 Warner Yard. (ref. 1134_PL-GA-00).

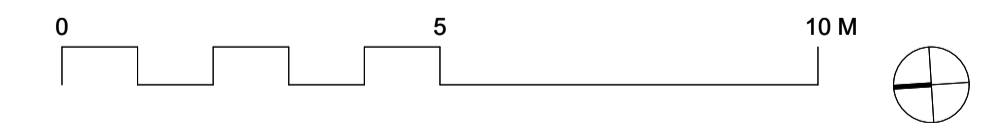
2no. new plant units within high performance acoustic enclosures to yard; space for 2no future provision tenant plant units above, with high performance acoustic enclosures, all concealed behind screen. (ref. 1134_PL-GA-00).

Courtyard to be re-landscaped and new cycle and bin stores installed. (ref. 1134_PL-GA-00).



New rooflights and pavement lights. Refer to drawing 1134_PL-GA-10.

1 Proposed Plan - Roof Plan
1:100 @ A1



DRAWING NOTES:
 All dimensions to be checked on site prior to commencement of any works, and/or preparation of any shop drawings.
 Sizes of and dimensions to any structural elements are indicative only. See structural engineers drawings for actual sizes/dimensions.
 Sizes of and dimensions to any service elements are indicative only. See service engineers drawings for actual sizes and dimensions.
 This drawing to be read in conjunction with all other Architect's drawings, specifications and other Consultants' information.
 All proprietary systems shown on this drawing are to be installed strictly in accordance with the Manufacturers/Suppliers recommended details.
 Any discrepancies between information shown on this drawing and any other contract information or manufacturers/suppliers recommendations is to be brought to the attention of the Architect.
 DO NOT SCALE FROM THIS DRAWING.

DRAWING NOTES:

P5	S96a Submission	11/09/2023
P4	For S73 Submission	25/01/2022
P3	For S73	13/12/2021
P2	Planning Update	06/07/2021
P1	For Planning	05/03/2021
STATUS	REVISION	DATE

DRAWING PROPOSED PLANS Roof Plan	
SCALE 1:100 @ A1 (1:200 @ A3)	DRAWING FILE REF 1134_PL-GA-RF.vwx
DATE March 2021	DRAWN BY WH
DWG No. 1134_PL-GA-RF	REVISION P5
DRAWING STATUS PLANNING	

Buckley Gray Yeoman Studio 4.04 The Tea Building 56 Shoreditch High Street London E1 6JJ T: 020 7033 9913	
CLIENT	Vine 1 & Vine 2 Ltd
PROJECT	22-26 Vine Hill

Information contained on this drawing is the sole copyright of Buckley Gray Yeoman and is not to be reproduced without their permission.