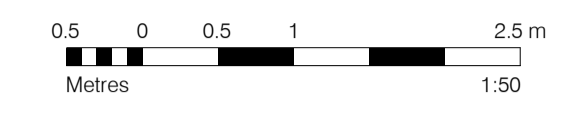


**GENERAL NOTES:**  
 This drawing is © 2019 Pollard Thomas Edwards LLP (PTE).  
 Use figured dimensions only. **DO NOT SCALE.**  
 All dimensions are in millimetres unless noted otherwise.  
 This drawing must be read in conjunction with all other relevant drawings and specifications from the Architect and other consultants.  
 If in doubt, ask.

**SETTING OUT NOTES:**  
 All setting out to be confirmed on site prior to construction - any discrepancy must be immediately reported to the Architect.  
 All setting out to face of structure or to grid. All partitions set out to studwork or structure.  
 For setting out and specification of M&E services refer to M&E Consultants documents.  
 For setting out and specification of structure refer to Structural Engineer's documents.



**NAMING CONVENTION KEY**

Project Code	Consultant	Volume	Level	Doc Type	Role	Drawing Number
XXXX	PTE	ZZ	ZZ	XX	A	00001

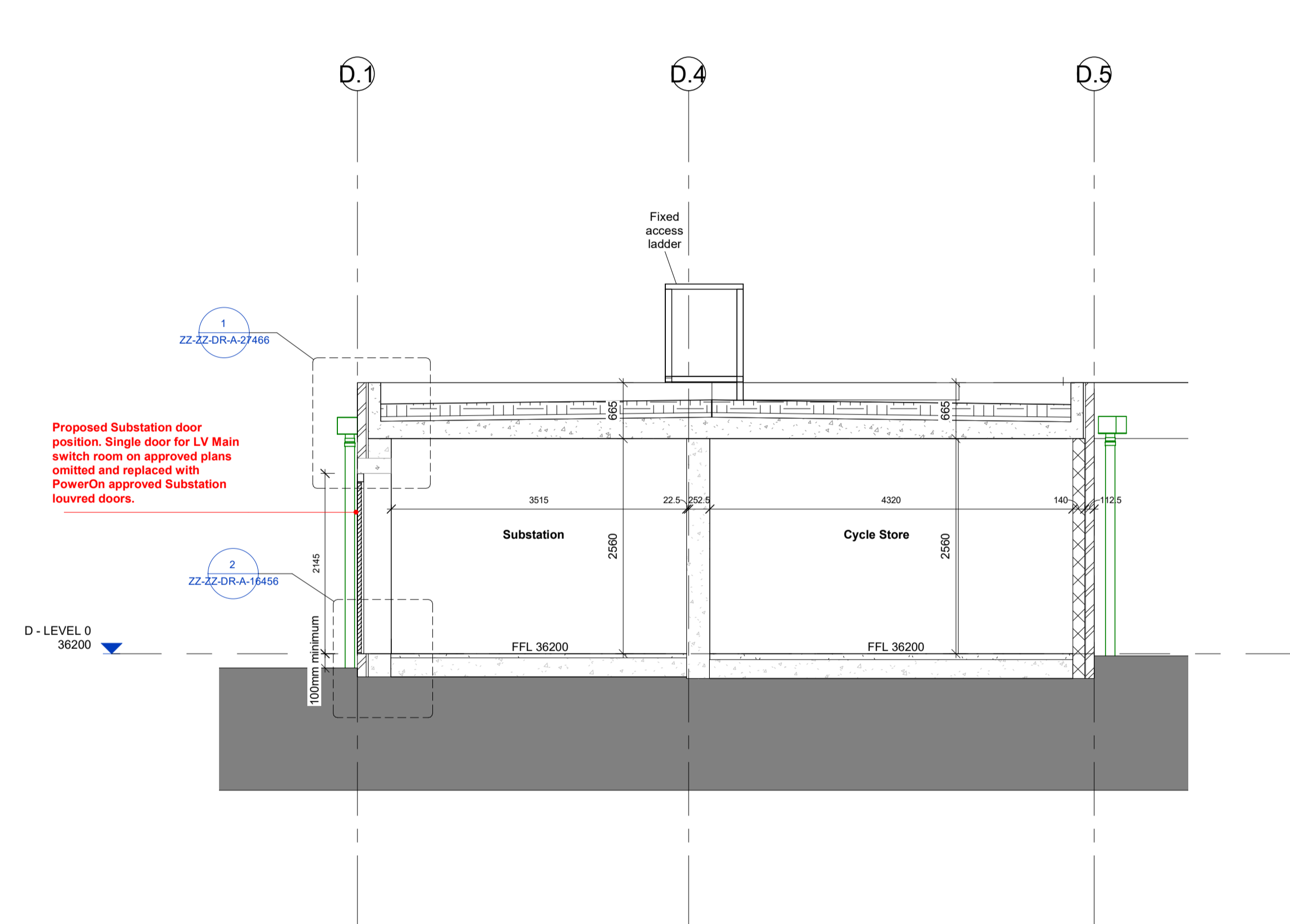
Package /Series

**Drawing Notes**

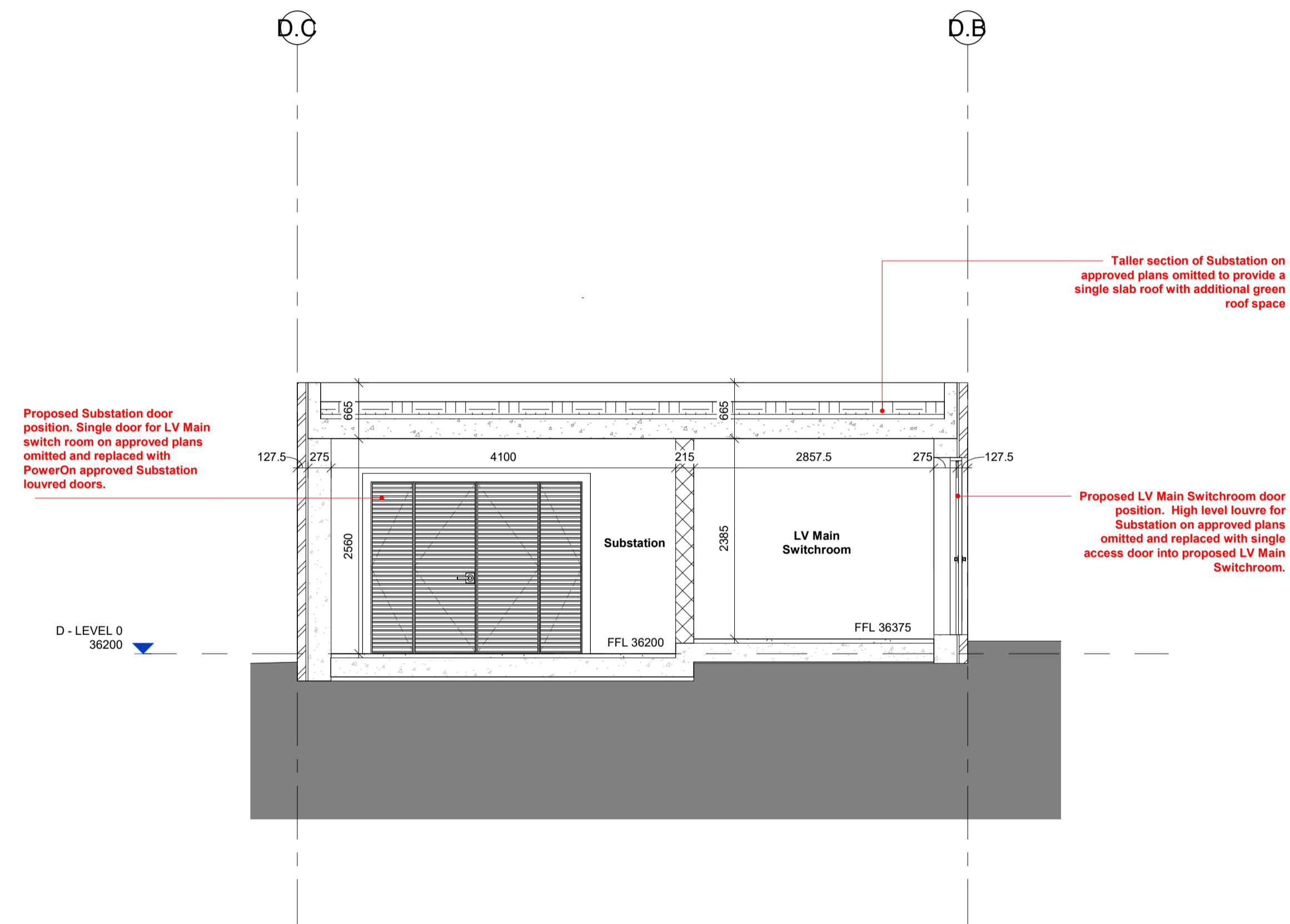
- Structural setting-out based on Revit models received from Stantec on 28.07.23
- Chill setting-out based on Revit models received from Stantec on 28.07.23
- MEPH setting-out based on Revit model received from OCSG on 23.07.23
- Landscape setting-out based on Revit model received from Farah on 02.03.23
- Refer to consultant drawings, reports and specifications for further information to their disciplines
- All information to be read in conjunction with latest Fire Report, produced by OPR
- All information to be read in conjunction with latest Acoustic Report, produced by RBA
- All architectural drawings to be read in conjunction with Architectural Specification, produced by PTE
- All details subject to Building Warranty and Building Control approval
- Contractor to verify all conditions, levels and dimensions on site and notify of any variations
- All items to comply with relevant planning approvals and conditions (to be discharged)
- Window and door openings to be confirmed on site by specialists
- Roof anchor points shown indicatively - subject to specialist design and specification

**Symbols Key**

FFL	Finished floor level	(B5)	Grid reference	---	Stab edge
SSL	Structural slab level	(E2)	Wall type	■	Cavity Barrier
RWP	Rainwater pipe / outlet	(F2)	Floor type	□	PV Panel
OF	Overflow pipe	(R2)	Roof type	▨	Gravel Ballast
SVP	Soil vent pipe	(S 03.03)	Pit number	Wx.Xx.Xx	Window Reference
SS	Slab stack	Type K	Pit type	WT-XXXX	Window Type
MJ	Movement joint	SR	Fenestration	DX-XXXX	Door Reference
MVHR	MVHR Airbrick	89.7m	Area	DT-XXXX	Door Type
		(PB)	Premises Information Box	Wb.Xx	Wardrobe Reference
				WTD-XXXX	Wardrobe Type



1 Substation and Cycle Store - Section AA  
 Scale: 1 : 50



2 Substation and Cycle Store - Section BB  
 Scale: 1 : 50