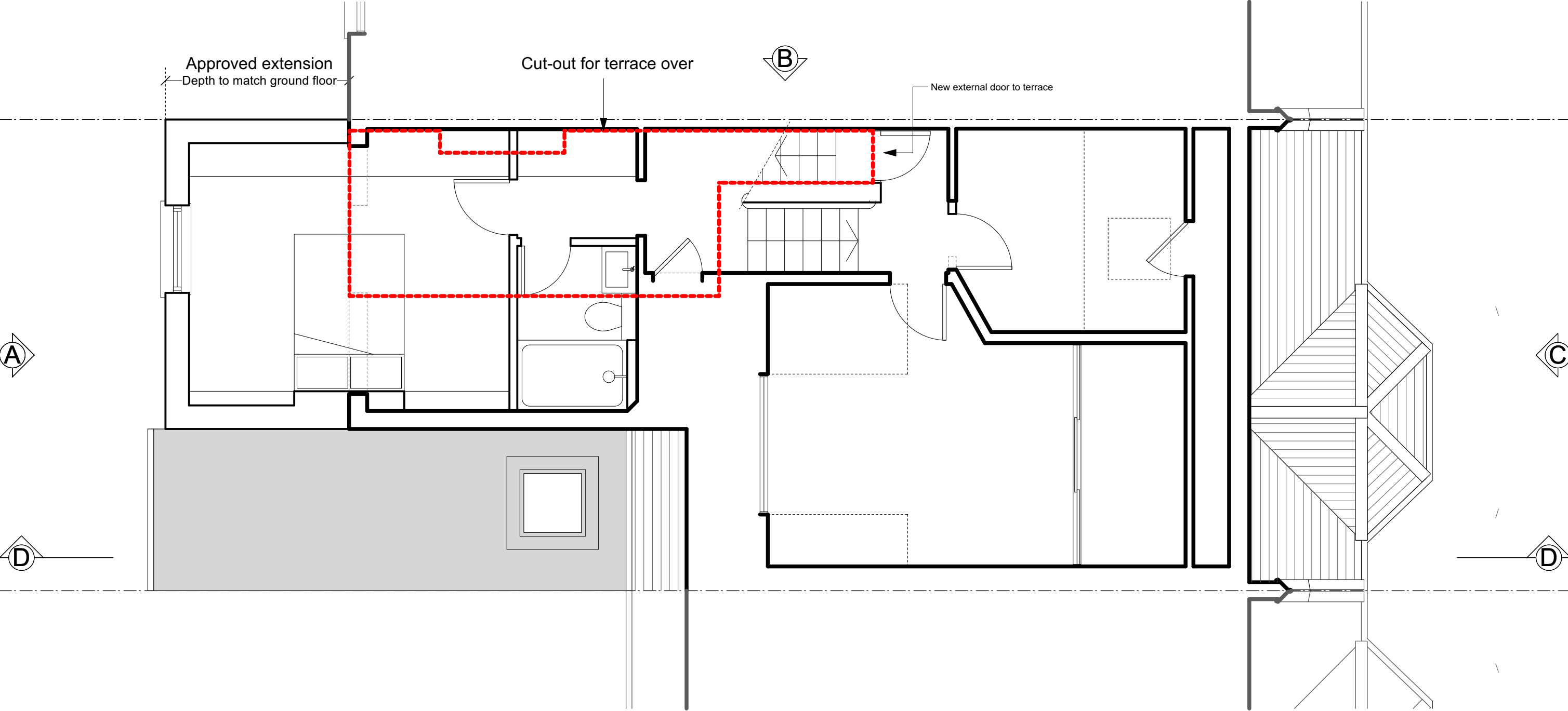
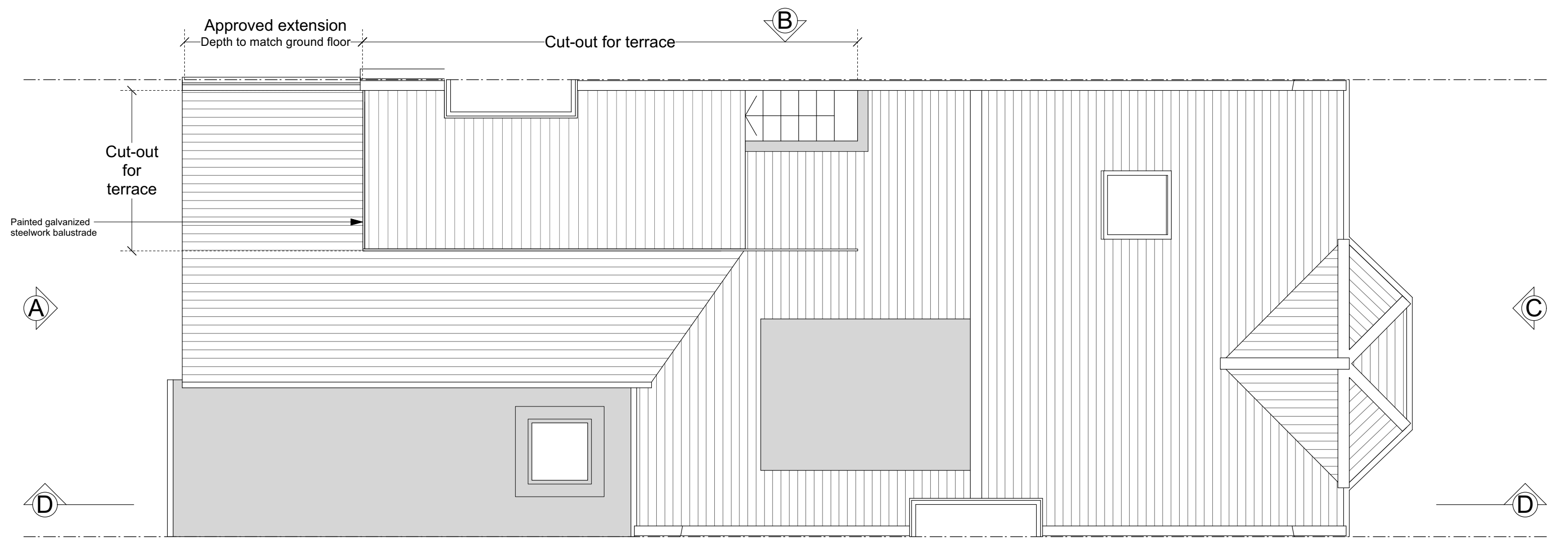


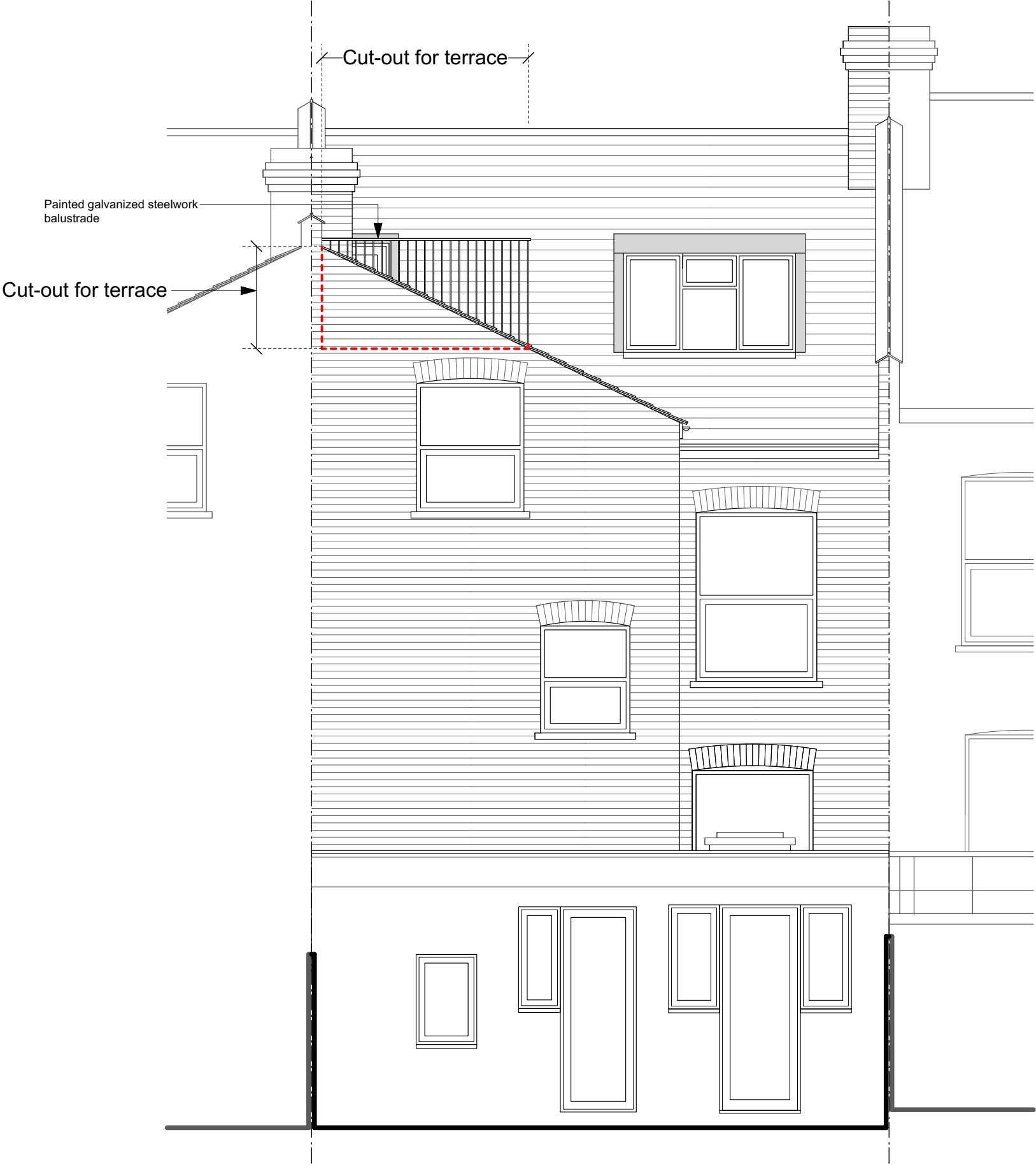
<div>NOTES</div> <div><p>This drawing was prepared for the purposes indicated below and is to be read as preliminary unless otherwise stated.</p><p>Copyright: This drawing is copyright of Space 120 Architects and is issued on the terms that it will not be reproduced or copied in whole or any part nor will any information be furnished from it without their consent. Space 120 Architects accepts no liability for the unauthorised use of drawings and should be notified of drawings developed from this source.</p><p>Scaling: This drawing is representative of the building or site and the intended works. Contractors should refer to the figured dimensions and should not scale off any part of printed or electronically issued versions of this drawing. Contractors should carry out site surveys to confirm dimensions and details of existing structure required for the setting out of their works prior to making shop drawings or otherwise setting-out the works.</p><p>Electronic issue: Space 120 Architects accepts no responsibility for omissions from or discrepancies in appearance of the drawings arising from transfer in electronic format. Contractors must refer to the printed issue of this drawing for verification of the Architects intentions and ensure that all information contained for use is current and should not rely on printed scales if the drawing has been issued in PDF format.</p></div>		<div>Scale</div> <div><div><div></div><div></div><div></div><div></div><div></div></div><div>1m2m3m4m5m</div></div> <div><div>N</div><div></div></div>	<div>REVISIONS</div> <table><tr><td></td><td></td><td></td></tr><tr><td></td><td></td><td></td></tr><tr><td></td><td></td><td></td></tr><tr><td></td><td></td><td></td></tr><tr><td></td><td></td><td></td></tr></table>																<div>Job name</div> 193 Sumatra Road NW6 1PF	<div>SPACE 120</div> <div>architects</div> <div>120 Winchester Road Highams Park London E4 9JP 07745 895 216 space120@live.com</div>
<div>Drawing title</div> Proposed First Floor Plan		<div>Date of issue</div> 24.08.23																		
<div>Drawing Number</div> 2069	<div>PT02</div>	<div>Rev</div> /																		
<div>Scale</div> 1:50@A3																				
<div>Purpose of issue</div> Preliminary																				



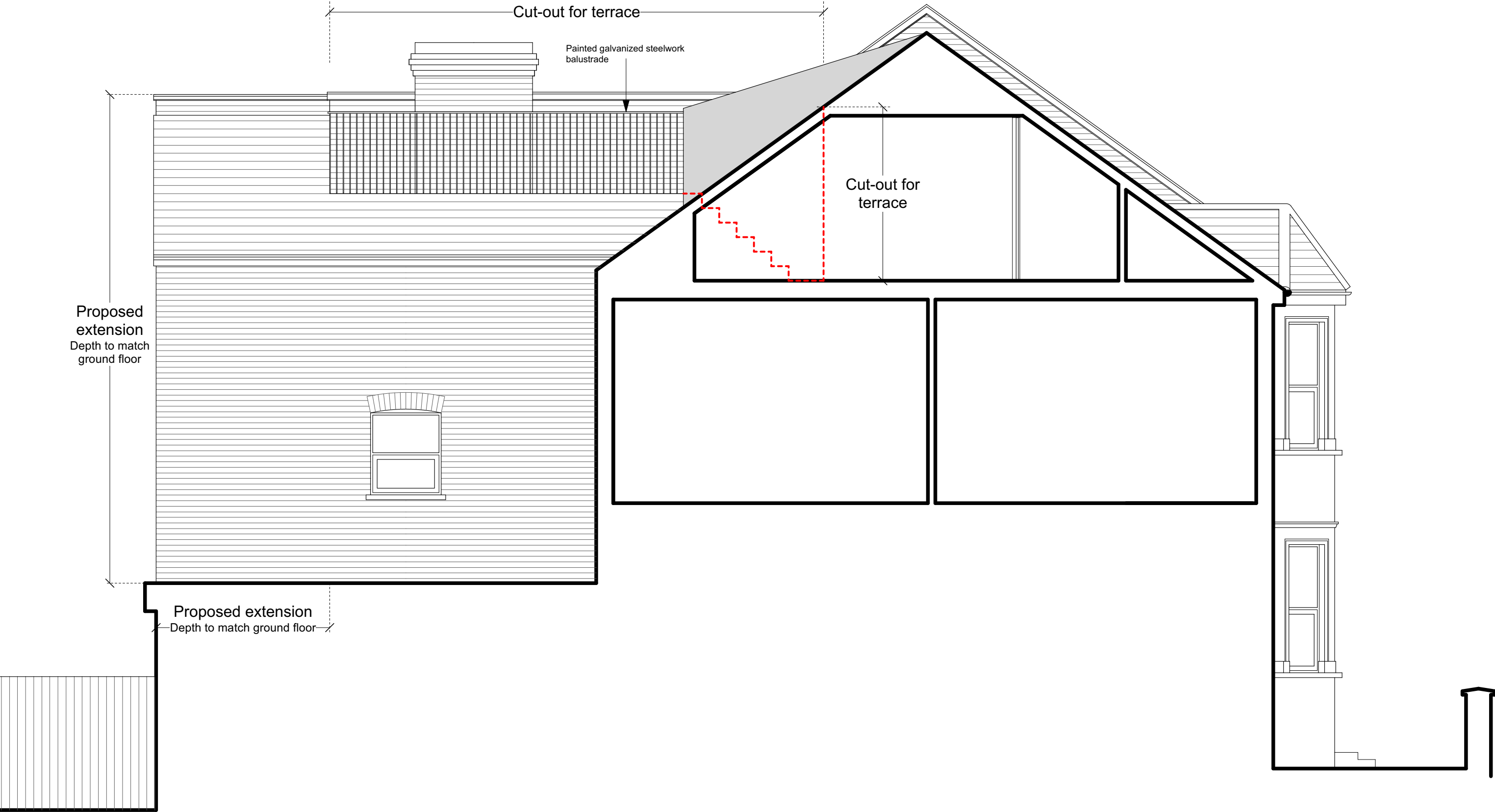
NOTES		Scale		<div><div></div><div></div><div></div><div></div><div></div></div> <div><div>1m</div><div>2m</div><div>3m</div><div>4m</div><div>5m</div></div>		REVISIONS		Job name		193 Sumatra Road NW6 1PF		SPACE 120 architects
<p>This drawing was prepared for the purposes indicated below and is to be read as preliminary unless otherwise stated.</p> <p>Copyright: This drawing is copyright of Space 120 Architects and is issued on the terms that it will not be reproduced or copied in whole or any part nor will any information be furnished from it without their consent. Space 120 Architects accepts no liability for the unauthorised use of drawings and should be notified of drawings developed from this source.</p> <p>Scaling: This drawing is representative of the building or site and the intended works. Contractors should refer to the figured dimensions and should not scale off any part of printed or electronically issued versions of this drawing. Contractors should carry out site surveys to confirm dimensions and details of existing structure required for the setting out of their works prior to making shop drawings or otherwise setting-out the works.</p> <p>Electronic issue: Space 120 Architects accepts no responsibility for omissions from or discrepancies in appearance of the drawings arising from transfer in electronic format. Contractors must refer to the printed issue of this drawing for verification of the Architects intentions and ensure that all information contained for use is current and should not rely on printed scales if the drawing has been issued in PDF format.</p>						Drawing title		Proposed Loft Plan		120 Winchester Road Highams Park London E4 9JP 07745 895 216 space120@live.com		
						Drawing Number		2069	PT03		Rev /	
						Date of issue		24.08.23				
						Scale		1:50@A3				
						Purpose of issue		Preliminary				





NOTES		Scale		<div><div></div><div>1m</div><div>2m</div><div>3m</div><div>4m</div><div>5m</div></div>		REVISIONS			Job name		193 Sumatra Road NW6 1PF		SPACE 120 architects	
<p>This drawing was prepared for the purposes indicated below and is to be read as preliminary unless otherwise stated.</p> <p>Copyright: This drawing is copyright of Space 120 Architects and is issued on the terms that it will not be reproduced or copied in whole or any part nor will any information be furnished from it without their consent. Space 120 Architects accepts no liability for the unauthorised use of drawings and should be notified of drawings developed from this source.</p> <p>Scaling: This drawing is representative of the building or site and the intended works. Contractors should refer to the figured dimensions and should not scale off any part of printed or electronically issued versions of this drawing. Contractors should carry out site surveys to confirm dimensions and details of existing structure required for the setting out of their works prior to making shop drawings or otherwise setting-out the works.</p> <p>Electronic issue: Space 120 Architects accepts no responsibility for omissions from or discrepancies in appearance of the drawings arising from transfer in electronic format. Contractors must refer to the printed issue of this drawing for verification of the Architects intentions and ensure that all information contained for use is current and should not rely on printed scales if the drawing has been issued in PDF format.</p>		<div>N</div> <div></div>					Drawing title		Proposed Roof Plan		120 Winchester Road Highams Park London E4 9JP 07745 895 216 space120@live.com			
							Drawing Number		2069	PT04			Rev /	
							Date of issue		24.08.23					
							Scale		1:50@A3					
							Purpose of issue		Preliminary					



NOTES		Scale	REVISIONS			Job name	193 Sumatra Road NW6 1PF	SPACE 120 architects	
This drawing was prepared for the purposes indicated below and is to be read as preliminary unless otherwise stated. Copyright: This drawing is copyright of Space 120 Architects and is issued on the terms that it will not be reproduced or copied in whole or any part nor will any information be furnished from it without their consent. Space 120 Architects accepts no liability for the unauthorised use of drawings and should be notified of drawings developed from this source. Scaling: This drawing is representative of the building or site and the intended works. Contractors should refer to the figured dimensions and should not scale off any part of printed or electronically issued versions of this drawing. Contractors should carry out site surveys to confirm dimensions and details of existing structure required for the setting out of their works prior to making shop drawings or otherwise setting-out the works. Electronic issue: Space 120 Architects accepts no responsibility for omissions from or discrepancies in appearance of the drawings arising from transfer in electronic format. Contractors must refer to the printed issue of this drawing for verification of the Architects intentions and ensure that all information contained for use is current and should not rely on printed scales if the drawing has been issued in PDF format.						Drawing title	Proposed Rear Elevation A		
						Drawing Number	2069 PT05	Rev	/
						Date of issue	23.08.23	120 Winchester Road Highams Park London E4 9JP 07745 895 216 space120@live.com	
						Scale	1:50@A3		
						Purpose of issue	Preliminary		



NOTES		Scale 		REVISIONS			Job name 193 Sumatra Road NW6 1PF			SPACE 120 architects	
This drawing was prepared for the purposes indicated below and is to be read as preliminary unless otherwise stated. Copyright: This drawing is copyright of Space 120 Architects and is issued on the terms that it will not be reproduced or copied in whole or any part nor will any information be furnished from it without their consent. Space 120 Architects accepts no liability for the unauthorised use of drawings and should be notified of drawings developed from this source. Scaling: This drawing is representative of the building or site and the intended works. Contractors should refer to the figured dimensions and should not scale off any part of printed or electronically issued versions of this drawing. Contractors should carry out site surveys to confirm dimensions and details of existing structure required for the setting out of their works prior to making shop drawings or otherwise setting-out the works. Electronic issue: Space 120 Architects accepts no responsibility for omissions from or discrepancies in appearance of the drawings arising from transfer in electronic format. Contractors must refer to the printed issue of this drawing for verification of the Architects intentions and ensure that all information contained for use is current and should not rely on printed scales if the drawing has been issued in PDF format.							Drawing title Proposed Flank Elevation D				
						Drawing Number 2069	PT08	Rev /			
						Date of issue 24.08.23					
						Scale 1:50@A3					
						Purpose of issue Preliminary					
											120 Winchester Road Highams Park London E4 9JP 07745 895 216 space120@live.com